



Expertise

Protocol number: 41850732
Order number / reference: 25245127
Inspection date: 6 Oct 2025

Manufacturer: Ford

Model: Transit Custom Kombi 320 L2H2 VA Trend

VIN: WF01XXTTG1MA19721



Vehicle details	
Manufacturer / Type / Model / Equipment	
Ford Transit Custom Kombi 320 L2H2 VA Trend	
Vehicle Identification number	WF01XXTTG1MA19721
Mileage (Read)	156,787 km
First registration	9 Sept 2021
Number of holders	1
Power / Engine displacement	96 kw / 1,995 ccm
Fuel type / Cylinder	Diesel / 4
Gearbox / Number of gears	Manual / 6
Type of drive	Front drive
Type of vehicle	Van
Colour / colour code	Blazer Blau Uni
Doors / Seats	4 / 9
Upholstery type	Artificial leather
Colour of upholstery	Black



Vehicle details

Maintenance booklet / proof	digital proof / complete	Next maintenance in	40,000 km
Last maintenance on / at	09/2025 at 156,481 km		
Key is / should be	2 / 2	FZG documents	ZB#2 (B) was available (copy), ZB#1 (S) was not available
		Letter No.	GD560479
Previous damage / Accident	None detectable	Repainting	None detectable
Inspection conditions	sufficient	Lifting equipment / pit	yes
Test drive	Not performed	Engine function test	Performed
Manufacturer key number/ type code number	8566 / BMX 02730		
Emission standard	EURO6;WLTP;AP;PI/CI; M, N1 I	Fine dust sticker	
Permitted total weight	3,190 kg	Empty weight	

Tyres

Mounted tyres

#	Tyre size	Type of tyre	Manufacturer	Tread depth
1)	215/65 R16 109T	All-season tyres on Steel rim with wheel cover	Sonstige	6mm / 6mm
2)	215/65 R16 109T	All-season tyres on Steel rim with wheel cover	Sonstige	6mm / 6mm

Replacement

Typ	Tyre size	Type of tyre	Manufacturer	Tread depth
E	215/65 R16 109T C	Summer tyres on Steel	Goodyear	9 mm

Legend: Tread depth information for tires on the left is in the first place, for tires on the right is in the second place on the axle in the direction of travel

Equipment

Standard equipment

- | | |
|--|--|
| <ul style="list-style-type: none"> • 1 battery • Anti-lock braking system with electronic brake-force distribution (EBD) • Floor surface, rubberized, throughout the vehicle up to the D-pillar • roof, high • Headlining in driver's cab and passenger compartment • tachometer • Third brake light • Windows, 2nd row: fixed side windows, right and left • Electric front windows (with quick-down/-up switch for driver's side) • Warranty 2-year Ford new car warranty including the Ford Assistance mobility guarantee • Cruise control including leather steering wheel (with adjustable speed limiter) • Interior lighting front and rear with delay circuit (additionally with reading lights at the front) • Emergency brake support including emergency brake light (pulsating brake lights during heavy braking) • Particulate filter: diesel particulate filter • Tire pressure monitoring system (TPMS) • Wheels: Steel wheels 6.5 J x 16 with 215/65 R 16 tires • Sliding door entry light automatically when door is opened • Mud flaps front and rear • Fixed side windows, second row, right and left • Power steering • Seats: 3 seats (single and double seats) in the 2nd and 3rd rows including height-adjustable headrests (single and double seats in the 2nd and 3rd rows, removable - 2 ISOFIX mounts in the 2nd row - 1 ISOFIX mount in the 3rd row) • Doors: Sliding door right • Immobiliser • auxiliary heater, electric • Second key with remote control | <ul style="list-style-type: none"> • Airbag driver and passenger side • Exterior mirrors, electrically adjustable and heated (with integrated indicators) • On-board computer (with fuel consumption and mileage information (e.g. remaining range) and outside temperature display) • Double rear door (with window), with 90° hinges (with heated rear windows) • Electronic Safety and Stability Program (ESP) with Traction Control (TCS) (Hill Start Assist - Crosswind Assist - Safety Brake Assist - Rollover Protection) • Ford Easy Fuel (comfort fuel cap and misfuelling protection) • Generator, 240 A • Transmission: 6-speed transmission • Glove compartment with lockable lid • Paint finish: Solid paint • Steering column, adjustable (adjustable in height and reach) • Parking pilot system front and rear including fog lights • Hubcaps • Wheels/Tires: Spare wheel, steel wheel • Headlights: Halogen projector headlights (with LED daytime running lights and fog lights with static cornering lights) • Side protection strips • Seat belts (front seat belt pretensioners and force limiters - driver's seat belt not fastened warning system) • Start-stop system • Power socket: 12-volt connection (in the passenger compartment) • Front bumper painted in body color • Lashing eyes 4 • Central locking with remote control (2 keys, one of which with remote control) |
|--|--|

Extra equipment

- | | |
|--|---|
| <ul style="list-style-type: none"> • Exterior mirrors with blind spot assistant • Package: Visibility Package II (electrically adjustable and heated exterior mirrors - heated windscreen - windshield washer fluid sensor - electrically folding exterior mirrors - windscreen wipers with rain sensor - headlight assistant with day/night sensor) • Wheels: All-season tires (suitable for winter use) • Seats: Seat Package 2 (Custom) (Driver's seat, 4-way adjustable (forward/backward, backrest, seat cushion tilt, height) - Double passenger seat with storage compartment under individually foldable seat cushions - Height-adjustable headrests - Inside armrest for driver - Seat cover: artificial leather (vinyl)) | <ul style="list-style-type: none"> • Air conditioning front and rear (including water heating rear) • Radio: Audio system 21: Ford audio system with 8" multifunction display additionally with DAB/DAB+ (Connected Radio - FordPass Connect Wi-Fi hotspot (up to 4G/LTE, for up to 10 mobile devices) - 8" touchscreen multifunction display (20.32 cm screen diagonal) - 6 speakers, antenna - Integrated control panel and audio remote control on the steering wheel - Support for Android Auto and Apple CarPlay) • Heat-insulating glazing, medium tint of the side window(s) of the 2nd row |
|--|---|



Brief expert findings

Documents submitted	At the time of the inspection, the registration certificate Part 2 (letter) was available, but the registration certificate Part 1 (certificate) was not. (Copy)
VIN comparison	The vehicle identification number (VIN) was read from the vehicle and its conformity with the submitted documents was verified during the inspection by the undersigned.
Inspection	The inspection conditions were sufficient for the assessment of the vehicle. Lifting equipment and a pit were available for examining the vehicle.
Test drive	No test drive/maneuvering was carried out during the inspection of the vehicle.
Engine function test	An engine test run was performed.

Value reducing factors

No.	Component group	Description
1	Door - front left side	Door seal - Loose - Un- / install
2	Sill - left side	Sill - Corrosion - Paint
3	Boot lid / rear door	Rear door - left side - Corrosion - Repair and paint
4	Bonnet	Bonnet (Wellig) - Paint defect - Repair and paint
5	Front bumper	Front bumper - Dent / paintcoat damage - Repair and paint
6	Vehicle glazing	Windscreen - Damaged - Replace
7	Roof	Roof - Corrosion - Repair and paint

Wear and tear

No.	Component group	Description
1	Side panel - rear right side	Side panel - dent(s) - No deduction
2	Rear bumper	Rear bumper - Scratch(es) - No deduction
3	Boot lid / rear door	Rear door - right side - Scratch(es) - No deduction

The vehicle shows signs of wear commensurate with its age and use.

Order/Scope of order

The order was placed to prepare a sales report for the vehicle described. This includes the following:

- Description of core relevant information about the vehicle
- Documentation of equipment features
(*Delivery by third-party service providers*)
- Documentation of damage, defects, missing parts
- Documentation of previous damage, unrepaired previous damage, repainting
- a brief visual or functional inspection of the equipment details if possible.
(*Functional tests of driver assistance systems are not included in the scope of services!*)
- a photo documentation of the vehicle



Basis for the order

This product is based on the guidelines for vehicle returns and valuations of light commercial vehicles from Alphabet Fuhrparkmanagement GmbH. The expert makes the explicit findings in each individual case objectively within the framework of the specified standards based on his or her own expertise.

The vehicle inspection takes place in a disassembled state.

Damage or defects that can only be detected during disassembly/diagnosis work or through advanced knowledge remain within the scope of the prognosis risk. An extended risk exists for concealed defects caused by fraudulent deception and not identifiable by the expert.

Damage or defects resulting from normal use or wear and tear of the vehicle will be accepted according to the applicable standard.

There was no explicit identification or monetary consideration of the expected features within the product.

Features which in their nature and severity slightly exceed normal use but do not constitute unacceptable damage will be documented and identified under signs of use if necessary.

Damage or defects that can no longer be attributed to normal use or wear and tear according to the underlying standard are listed in the product under value-reducing factors.

Depending on the product specification, a monetary ID can be provided. If this takes place, the costs can be 100% d or pro rata depending on the vehicle's age and mileage.

Previous damages

Apparently, no repaired previous damage could be found on the vehicle.



Figure 1: Diagonal front (left)



Figure 2: Diagonal front (right)



Figure 3: Diagonal rear (left)



Figure 4: Diagonal rear (right)



Figure 5: Interior - front



Figure 6: Interior - rear

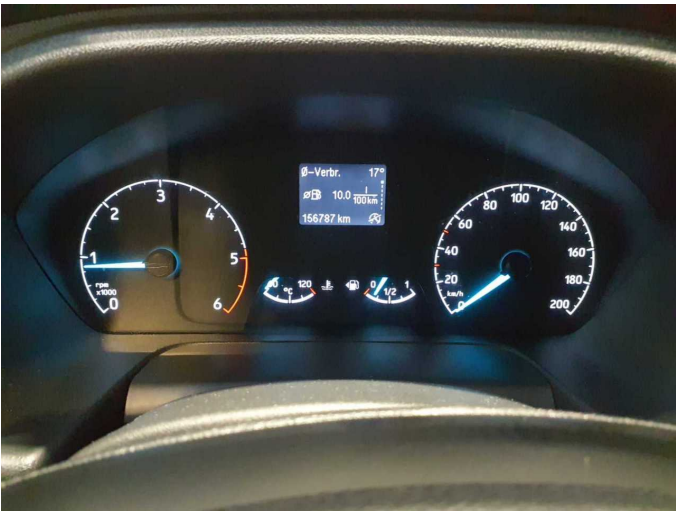


Figure 7: Instrument cluster



Figure 8: Instrument panel



Figure 9: Interior 360° view



Figure 10: Cargo area



Figure 11: VIN



Figure 12: Mounted tyres

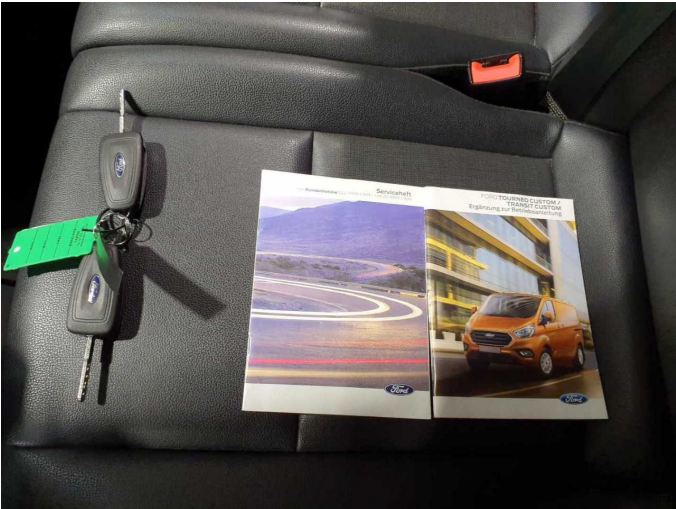


Figure 13: Documents



Figure 14: Documents

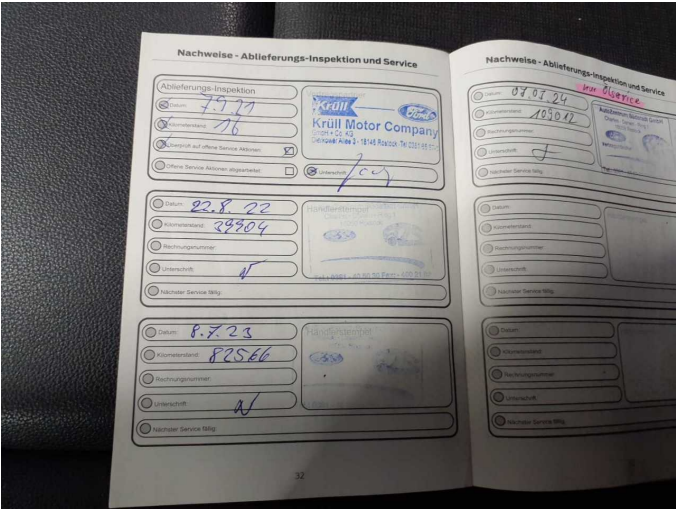


Figure 15: Documents

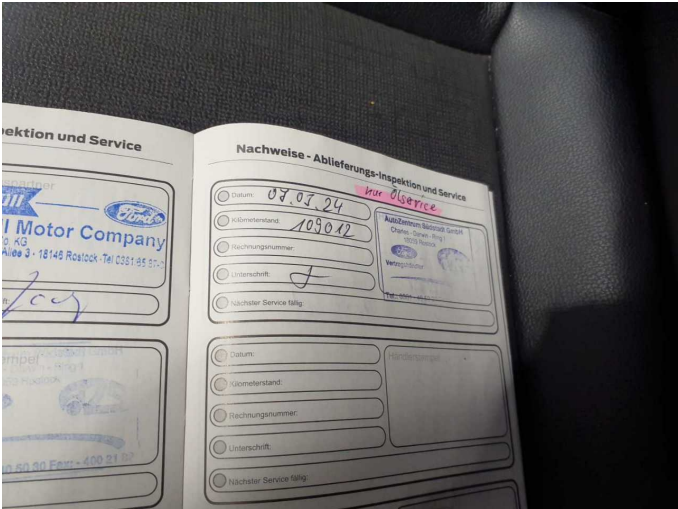


Figure 16: Documents



Figure 17: Misc.



Figure 18: Misc.



Figure 19: Misc.



Figure 20: Misc.



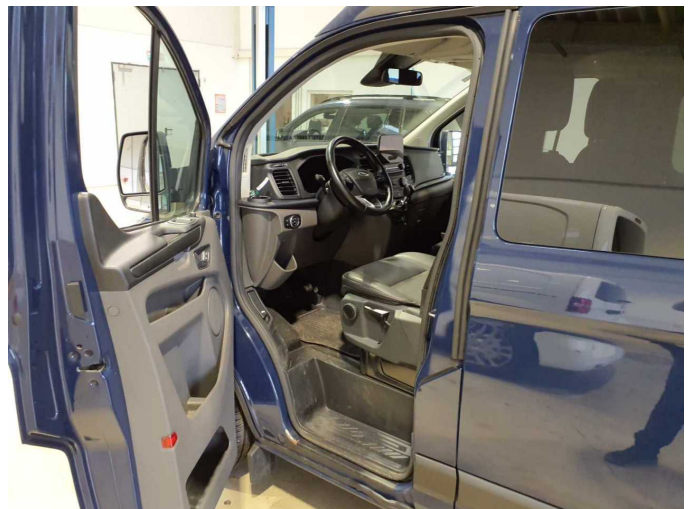
Figure 21: Misc.



Figure 22: Misc.



Figure 23: Misc.



Damage 1: Door - front left side: Door seal - Loose - Un- / install



Damage 1: Door - front left side: Door seal - Loose - Un- / install



Damage 1: Door - front left side: Door seal - Loose - Un- / install



Damage 2: Sill - left side: Sill - Corrosion - Paint



Damage 2: Sill - left side: Sill - Corrosion - Paint



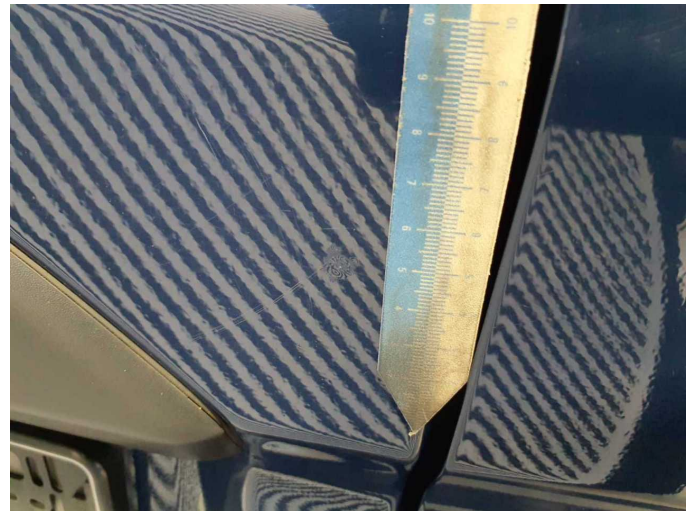
Damage 3: Boot lid / rear door: Rear door - left side - Corrosion - Repair and paint



Damage 3: Boot lid / rear door: Rear door - left side - Corrosion - Repair and paint



Damage 3: Boot lid / rear door: Rear door - left side - Corrosion - Repair and paint



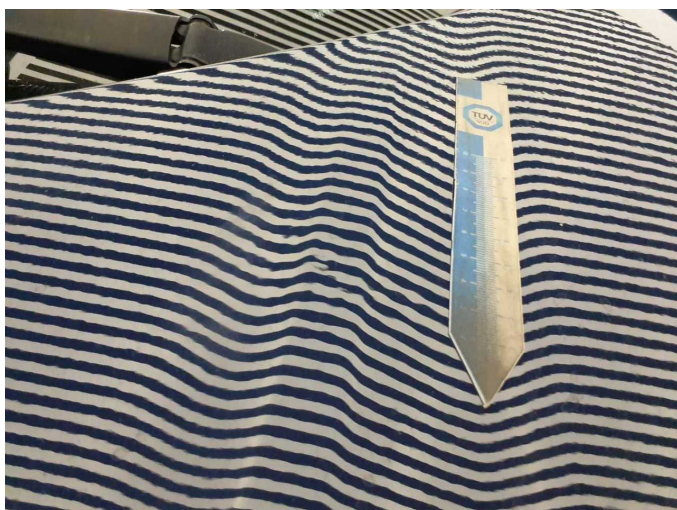
Damage 3: Boot lid / rear door: Rear door - left side - Corrosion - Repair and paint



Damage 4: Bonnet: Bonnet (Wellig) - Paint defect - Repair and paint



Damage 4: Bonnet: Bonnet (Wellig) - Paint defect - Repair and paint



Damage 4: Bonnet: Bonnet (Wellig) - Paint defect - Repair and paint



Damage 5: Front bumper: Front bumper - Dent / paintcoat damage - Repair and paint



Damage 5: Front bumper: Front bumper - Dent / paintcoat damage - Repair and paint



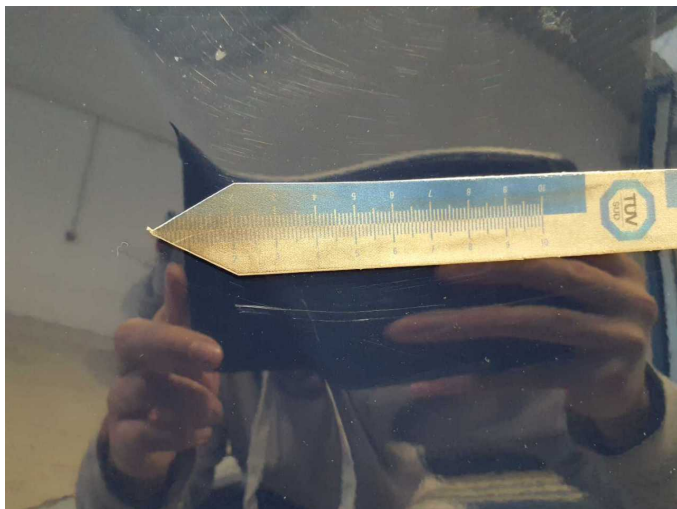
Damage 5: Front bumper: Front bumper - Dent / paintcoat damage - Repair and paint



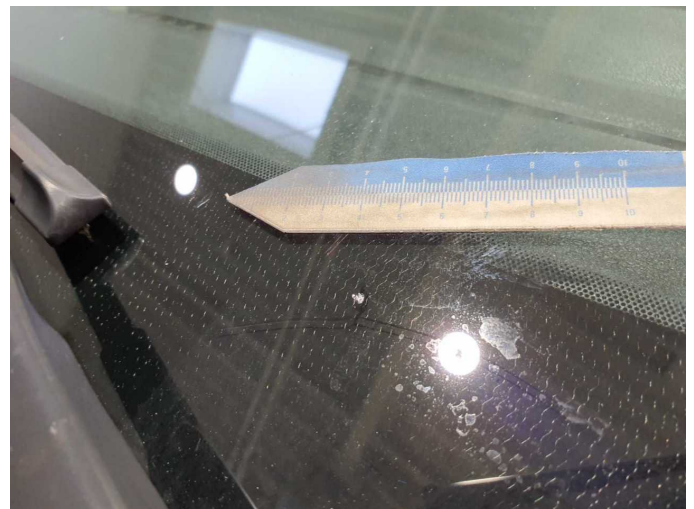
Damage 5: Front bumper: Front bumper - Dent / paintcoat damage - Repair and paint



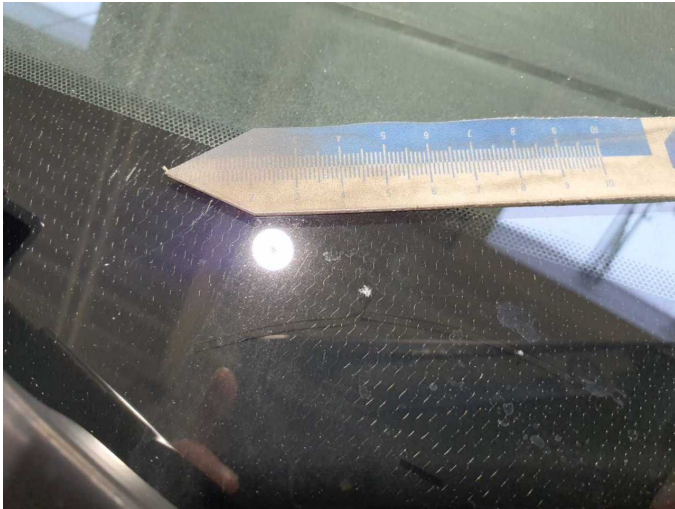
Damage 5: Front bumper: Front bumper - Dent / paintcoat damage - Repair and paint



Damage 5: Front bumper: Front bumper - Dent / paintcoat damage - Repair and paint



Damage 6: Vehicle glazing: Windscreen - Damaged - Replace



Damage 6: Vehicle glazing: Windscreen - Damaged - Replace



Damage 6: Vehicle glazing: Windscreen - Damaged - Replace



Damage 7: Roof: Roof - Corrosion - Repair and paint



Damage 7: Roof: Roof - Corrosion - Repair and paint



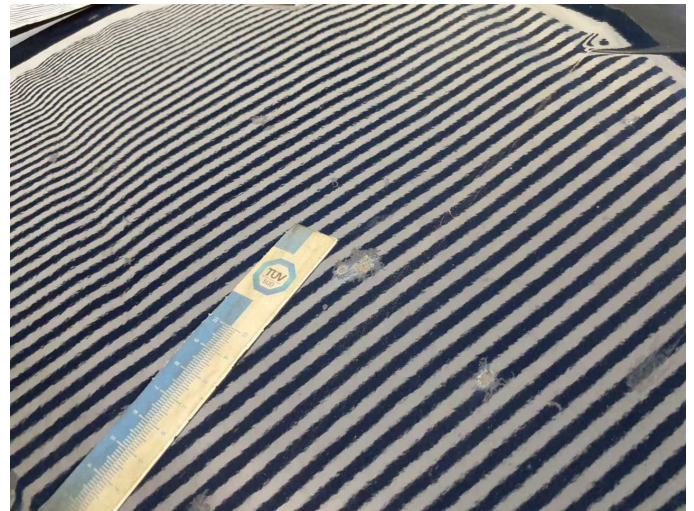
Damage 7: Roof: Roof - Corrosion - Repair and paint



Damage 7: Roof: Roof - Corrosion - Repair and paint



Damage 7: Roof: Roof - Corrosion - Repair and paint



Damage 7: Roof: Roof - Corrosion - Repair and paint



Damage 7: Roof: Roof - Corrosion - Repair and paint



Wear and tear 3: Boot lid / rear door: Rear door - right side - Scratch(es)
- No deduction



Wear and tear 3: Boot lid / rear door: Rear door - right side - Scratch(es)
- No deduction



Wartungshistorie

(gemäß Auftraggeber Informationen)

Fahrgestellnummer: WF01XTTG1MA19721
Hersteller / Modell: FORD FORD Transit Custom 320 L2H2 VA Trend

Datum	KM-Stand	Beschreibung
02.09.2025	156.481	Bremse Sonstiges; Bremsflüssigkeit; Bremsflüssigkeit ern; Bremsklötze vorne; Keilriemen ern; Keilrippenriemen; Motoröl b. Wartung; Ölwechsel; Reparatur Sonstiges; Zahnriemen/Steuerkett ern
03.07.2025	152.071	Bremsflüssigkeit; Bremsflüssigkeit ern; Kupplung ern; Reparatur Sonstiges; Systemtest/Eigendiagnose
29.01.2025	138.820	Bremse Sonstiges; Bremsklötze hinten; Bremsscheiben + Klötze h; Bremsscheiben hinten; Motoröl b. Wartung; Ölfilter ern; Regelwartungsdienst; Wartung Sonstiges
10.10.2024	129.299	Motoröl b. Wartung; Ölfilter ern; Ölwechsel; Wartung Sonstiges
07.03.2024	109.012	Bremsbelagfühler ern; Bremse Sonstiges; Bremsklötze vorne; Bremsscheiben + Klötze v; Bremsscheiben vorne; Motoröl b. Wartung; Ölfilter ern; Ölwechsel; Wartung Sonstiges
12.12.2023	98.627	Bremsbelagfühler ern; Bremse Sonstiges; Bremsklötze hinten; Bremsklötze vorne; Bremssattel ern/inst
11.10.2023	90.822	Reparatur Sonstiges
10.07.2023	82.566	Bremsflüssigkeit; Bremsflüssigkeit ern; Bremsklötze vorne; Luftfiltereinsatz ern; Motoröl b. Wartung; Ölfilter ern; Regelwartungsdienst; Wartung Sonstiges
15.05.2023	74.087	Bremsbelagfühler ern; Bremsklötze hinten
22.08.2022	39.904	Bremsklötze vorne; Motoröl b. Wartung; Regelwartungsdienst