



MERCEDES-BENZ B-Klasse  
B 200 7G-DCT

VIN NO WDD2462431J484780  
Registration Number 431J484780



MOT Date	Number of Owners	Number of Keys	Odometer Reading
-	2	2	61968 km
Last Service	Last Service Mileage	First Registration Date	Country First Registered
-	-	2018-04-20	-

Inspection Report Summary

Customer	BCA Online	Report Number	P20250915082856
Inspection Date / Place	2025-09-15 / BCA Neuss	Cosmetic Grade	4

Vehicle Summary

Vehicle Condition	Runner	VAT Type	Margin
Fuel Type	Petrol	Road Worthy	Yes
Colour	Black	Engine Size (cc)	1595
Engine Size	1.6	No of Doors	5
Body Type	Stationwagon / Estate	Drive Train	Front
Seat Colour		No of Seats	5
Seat Covering Name	Schwarz	Seat Covering	Cloth/Leather
Charging Cables		NEDC CO2 Rating (q/km)	130
Gearbox Type	Automatic		

Vehicle History & Documents

Service Book Available	Missing	Next Service Mileage	km
Previous Usage		Imported	No
Manufacturer Warrenty			











Equipment

USB Socket	Alloys wheels	Bluetooth telephone interface	Remote adjusting wing mirrors
Reversing Camera	Stability control	Electrically folding wing mirrors	LED Headlamps
Rear parking sensors	Airbag Status	Anti-lock braking	Front parking sensors
Remote central locking	Satellite navigation	Electrically adjustable seats	Leather steering wheel
Radio			

Equipment Details

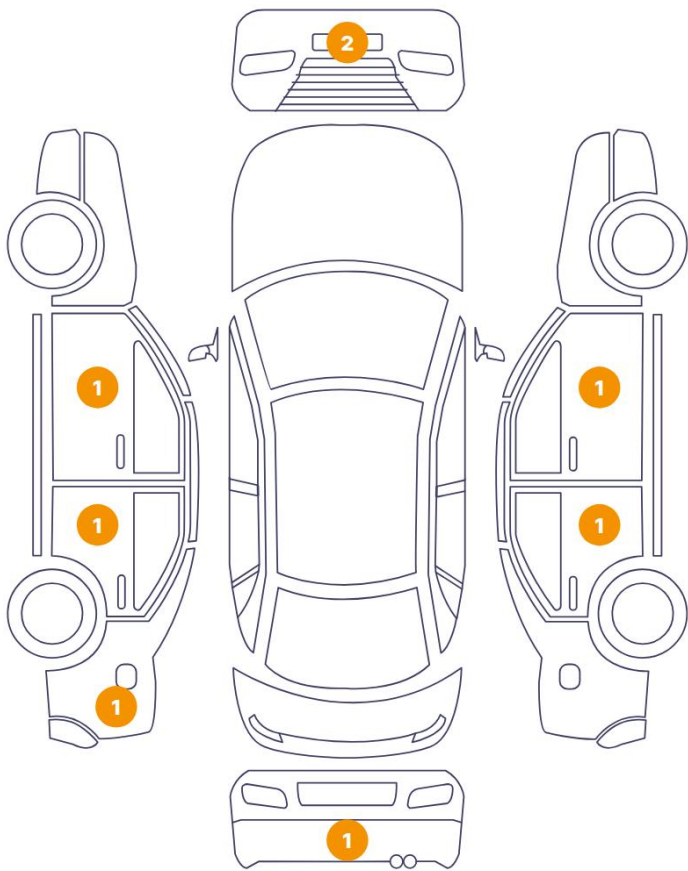
Air Conditioning	Dual Zone Climate Control	Alloy Wheel Size	17
Seat Heating	Front		

Wheels & Tyres

Right Front Tyre Depth	5	Left Front Tyre Depth	5
Right Rear Tyre Depth	5	Left Rear Tyre Depth	5

Cosmetic Damage

8 Schäden



0 Schäden



Component		Damage	Comments
1	Bumper / Front	Paint / Scratch / Scuff	
2	Bumper / Front	Paint / Scratch / Scuff	
3	Door / Front Left	Paint / Stone Chip	
4	Door / Back Left	Paint / Scratch / Scuff	
5	Side Panel / Back Left	Paint / Scratch / Scuff	
6	Door / Back Right	Paint / Stone Chip	
7	Door / Front Right	Paint / Stone Chip	
8	Bumper / Back	Paint / Scratch / Scuff	





1. Bumper / Front  
Paint / Scratch / Scuff -



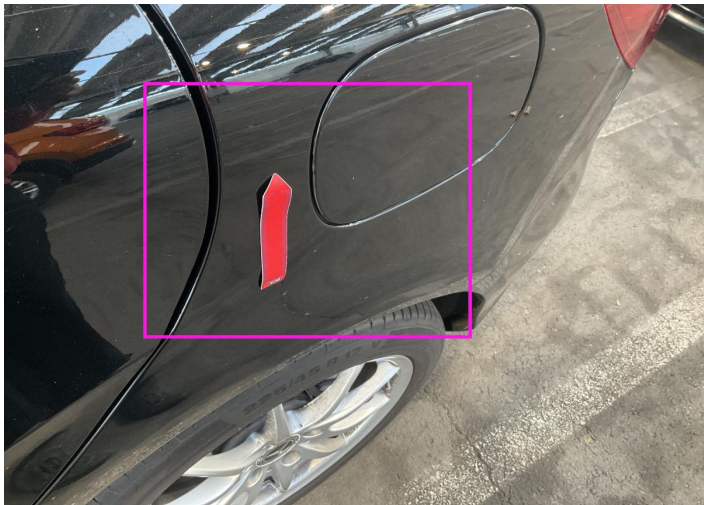
2. Bumper / Front  
Paint / Scratch / Scuff -



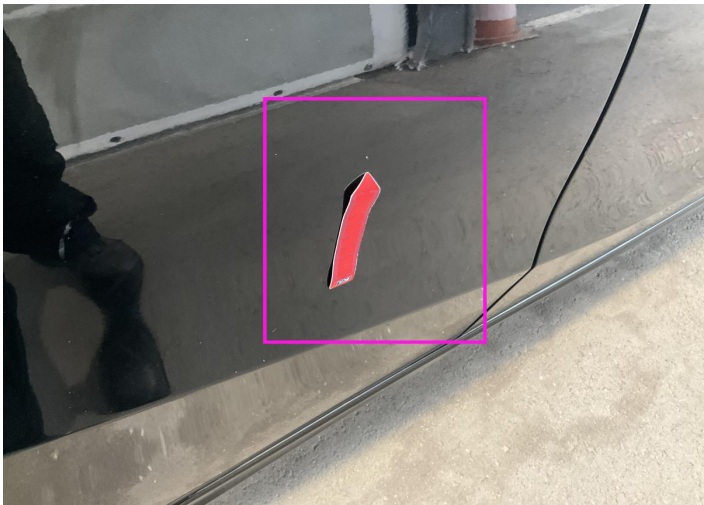
3. Door / Front Left  
Paint / Stone Chip -



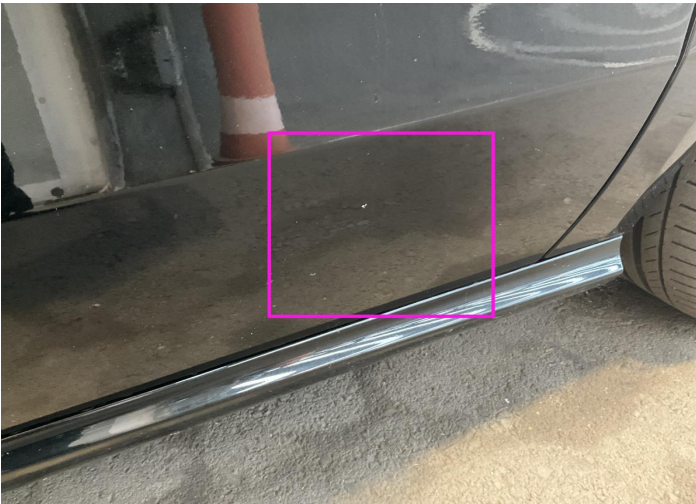
4. Door / Back Left  
Paint / Scratch / Scuff -



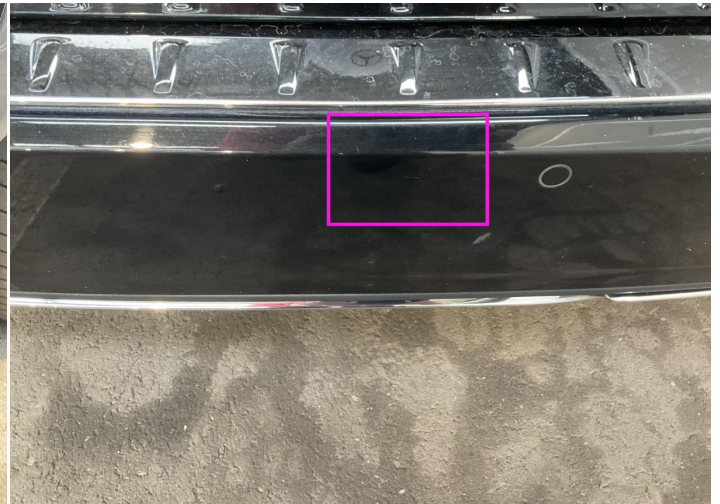
5. Side Panel / Back Left  
Paint / Scratch / Scuff -



6. Door / Back Right  
Paint / Stone Chip -



7. Door / Front Right  
Paint / Stone Chip -



8. Bumper / Back  
Paint / Scratch / Scuff -



## Mechanical Condition

### Control Lights

Display Defect	✓	Service Light	✓
ABS Warning Light	✓	ESP Fault/Traction Control Malfunction Light	✓
Airbag Warning Light	✓	Oil Pressure Warning Light	✓
Brake Warning Light	✓	Power Steering Warning Light	✓
Alternator / Battery	✓	No Dashboard Lights	✓

### Equipments Test

Central Locking	✓	Main & Spare Keys Functioning	✓
Electric Windows	✓	Navigation System	✓
Audio Equipment	✓	Parking Sensors / Cameras Functioning	✓
AC / Heating System	✓	Other Equipments	✓

### Engine

Engine Status / EML	✓	Engine Leak Visible	✓
Engine Starts	✓		

### Gearbox

Gear Box	✓
----------	---

### Levels

Brakes Fluid	✓	Coolant Fluid	✓
--------------	---	---------------	---

Test Drive Inspection

Steering Wheel			
Steering   Noise / Anomaly		✓	
Engine			
Engine Noise	✓	The Gears Scratch / Skip / Abnormal Operation	✓
Fume Quantity	✓	Power Loss	✓
Brake			
Brake System Anomaly		✓	
General			
Test Driven Status		✓	
✓ <i>No troubles detected, good condition or correct tests, according to vehicle age and mileage</i>			
! <i>Damages or malfunction detected that requires repairs by the buyer</i>			
NA <i>Not applicable</i>			
= <i>Not tested</i>			

Disclaimer

Please also note the "UserGuide condition report", which shows the scope of the vehicle description.

[User Guide](#)