



MERCEDES-BENZ B-Klasse
B 200 7G-DCT

VIN NO WDD2462431J296442
Registration Number 431J296442



MOT Date	Number of Owners	Number of Keys	Odometer Reading
2026-04-01	1	2	111696 km
Last Service	Last Service Mileage	First Registration Date	Country First Registered
-	-	2015-02-26	Germany

Inspection Report Summary

Customer	BCA Online	Report Number	P20250904085435
Inspection Date / Place	2025-09-04 / BCA Oberndorf	Cosmetic Grade	1

Vehicle Summary

Vehicle Condition	Runner	VAT Type	Margin
Fuel Type	Petrol	Road Worthy	Yes
Colour	White	Engine Size (cc)	1595
Engine Size	1.6	No of Doors	5
Body Type	Stationwagon / Estate	Drive Train	Front
Seat Colour		No of Seats	5
Seat Covering Name	Schwarz/grau	Seat Covering	Cloth/Synthetic Leather
Charging Cables		NEDC CO2 Rating (q/km)	130
Gearbox Type	Automatic		

Vehicle History & Documents

Service Book Available	Missing	Next Service Mileage	km
Previous Usage		Imported	No
Manufacturer Warrenty			







Equipment

USB Socket	Alloys wheels	Blindspotassist	Cruise control
Remote adjusting wing mirrors	Satellite navigation	Stability control	Central locking
LED Headlamps	Rear parking sensors	Airbag Status	Anti-lock braking
Bluetooth telephone interface	Front parking sensors	Remote central locking	Split folding rear seats
CD Player	Leather steering wheel	Radio	

Equipment Details

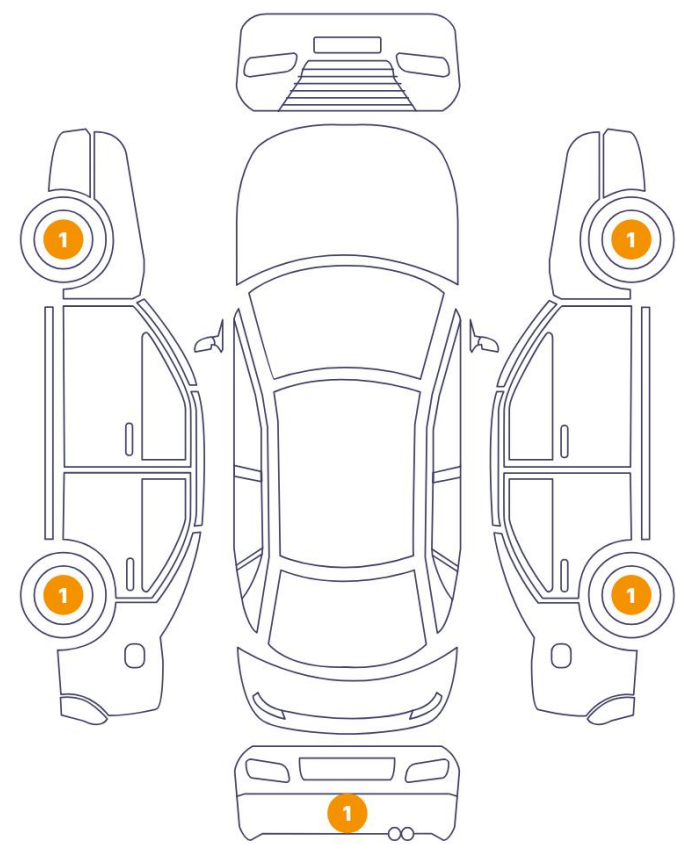
Air Conditioning	Yes	Alloy Wheel Size	17
Seat Heating	Front		

Wheels & Tyres

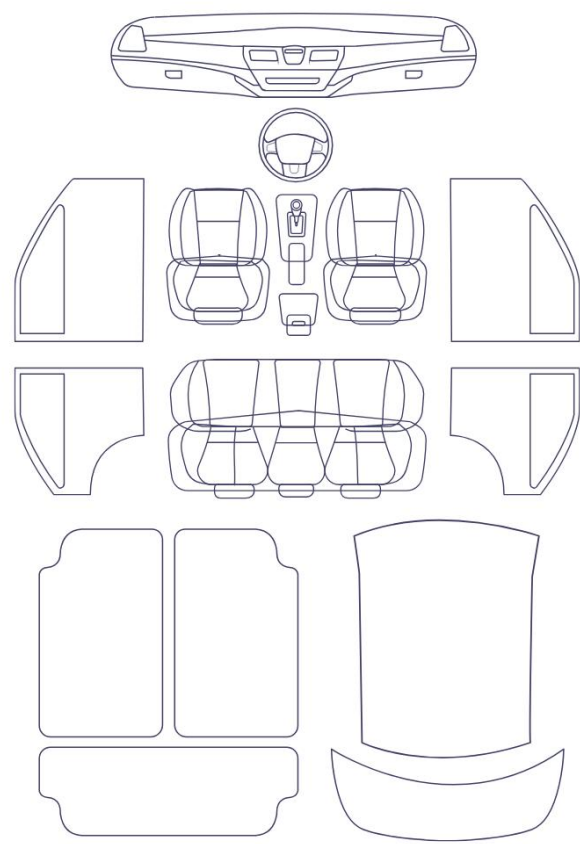
Right Front Tyre Depth	4	Left Front Tyre Depth	4
Right Rear Tyre Depth	5	Left Rear Tyre Depth	5

Cosmetic Damage

5 Schäden



0 Schäden



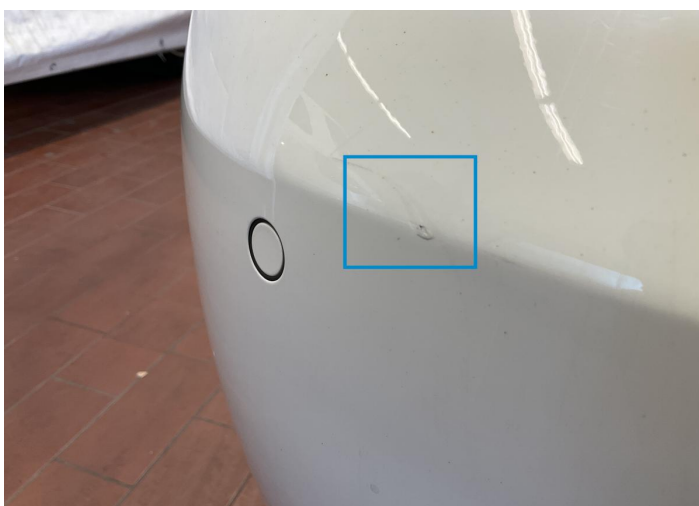
Component		Damage	Comments
1	Rim / Front Left	Out of Bodywork / Scratch	
2	Rim / Back Left	Out of Bodywork / Scratch	
3	Bumper / Back	Paint / Stone Chip	
4	Rim / Back Right	Out of Bodywork / Scratch	
5	Rim / Front Right	Out of Bodywork / Scratch	



1. Rim / Front Left
Out of Bodywork / Scratch -



2. Rim / Back Left
Out of Bodywork / Scratch -



3. Bumper / Back
Paint / Stone Chip -



4. Rim / Back Right
Out of Bodywork / Scratch -



5. Rim / Front Right
Out of Bodywork / Scratch -

Mechanical Condition

Control Lights

Display Defect	✓	Service Light	✓
ABS Warning Light	✓	ESP Fault/Traction Control Malfunction Light	✓
Airbag Warning Light	✓	Oil Pressure Warning Light	✓
Brake Warning Light	✓	Power Steering Warning Light	✓
Alternator / Battery	✓	No Dashboard Lights	✓
Tire Pressure Monitoring System	✓		

Equipments Test

Central Locking	✓	Main & Spare Keys Functioning	✓
Electric Windows	✓	Navigation System	✓
Audio Equipment	✓	Parking Sensors / Cameras Functioning	✓
AC / Heating System	✓	Other Equipments	✓

Engine

Engine Status / EML	✓	Engine Leak Visible	✓
Engine Starts	✓		

Gearbox

Gear Box	✓
----------	---

Levels

Brakes Fluid	✓	Coolant Fluid	✓
--------------	---	---------------	---

Test Drive Inspection

Steering Wheel

Steering | Noise / Anomaly

Engine

Engine Noise The Gears Scratch / Skip / Abnormal Operation

Fume Quantity Power Loss

Brake

Brake System Anomaly

General

Test Driven Status Not Performed

No troubles detected, good condition or correct tests, according to vehicle age and mileage

Damages or malfunction detected that requires repairs by the buyer

Not applicable

Not tested

Disclaimer

Please also note the "UserGuide condition report", which shows the scope of the vehicle description. [User Guide](#)