



MERCEDES-BENZ B-Klasse

B 180

VIN NO WDD2462421J401084
Registration Number 421J401084



MOT Date

2027-06-01

Last Service



Number of Owners

2

Last Service Mileage



Number of Keys

2

First Registration Date

2016-03-22

Odometer Reading

90819 km

Country First Registered

Germany

Inspection Report Summary

Customer	BCA Online	Report Number	P20250930083625
Inspection Date / Place	2025-09-30 / BCA Neuss	Cosmetic Grade	4

Vehicle Summary

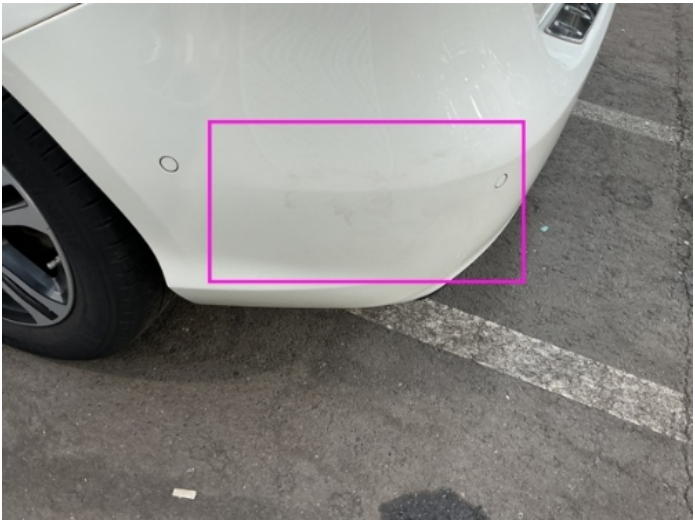
Vehicle Condition	Runner	VAT Type	Margin
Fuel Type	Petrol	Road Worthy	Yes
Colour	White	Engine Size (cc)	1595
Engine Size	1.6	No of Doors	5
Body Type	Stationwagon / Estate	Drive Train	Front
Seat Colour		No of Seats	5
Seat Covering Name	Braun	Seat Covering	Synthetic Leather
Charging Cables		NEDC CO2 Rating (q/km)	129
Gearbox Type	Manual		

Vehicle History & Documents

Service Book Available	Missing	Next Service Mileage	km
Previous Usage		Imported	No
Manufacturer Warrenty			







Equipment

USB Socket	Alloys wheels	Bluetooth telephone interface	Fatiguewarningsystem
Remote adjusting wing mirrors	Satellite navigation	Sunroof	Leather steering wheel
Radio	Airbag Status	Anti-lock braking	Cruise control
Front parking sensors	Remote central locking	Stability control	CD Player
LED Headlamps	Rear parking sensors		

Equipment Details

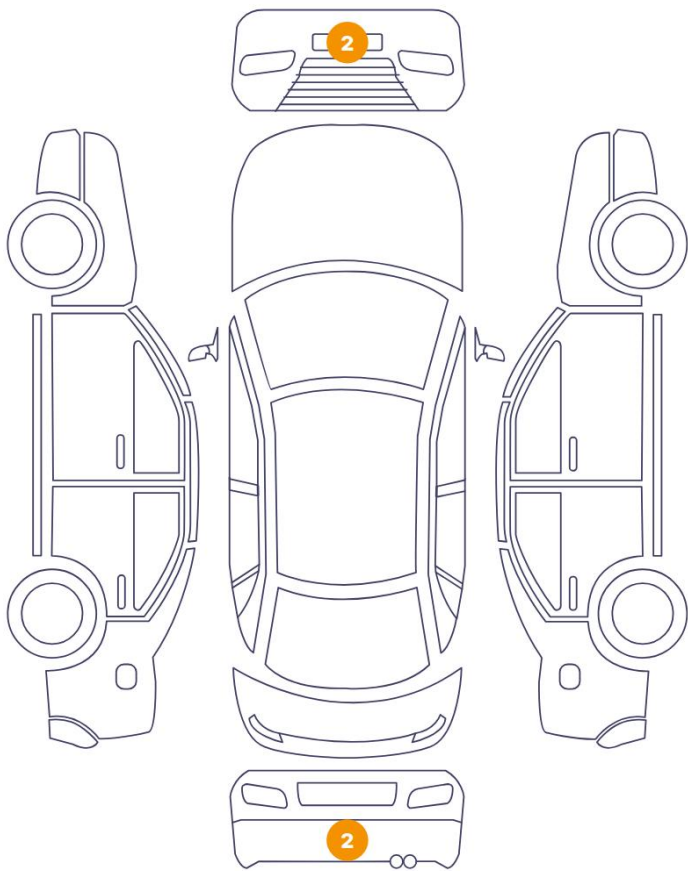
Air Conditioning	Yes	Alloy Wheel Size	16
Seat Heating	Front	Sunroof Type	Opening Panoramic

Wheels & Tyres

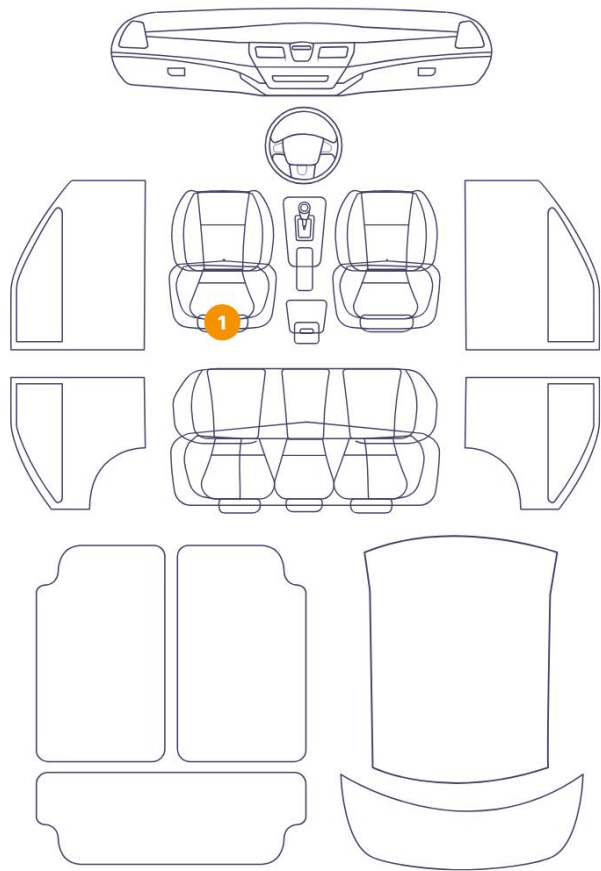
Right Front Tyre Depth	4	Left Front Tyre Depth	4
Right Rear Tyre Depth	4	Left Rear Tyre Depth	4

Cosmetic Damage

4 Schäden



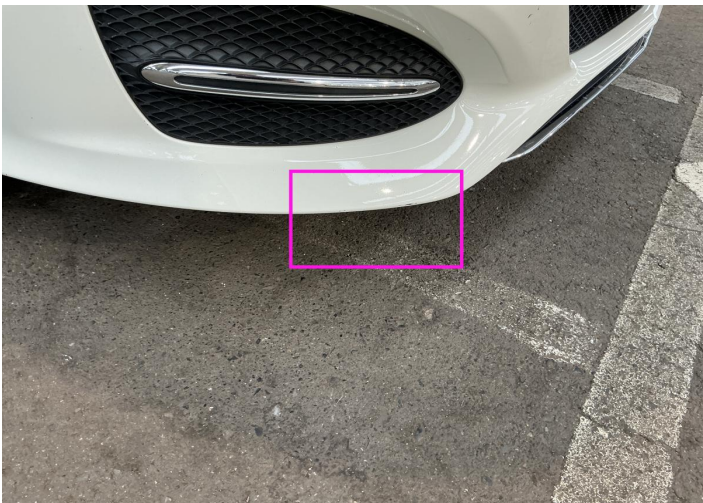
1 Schäden



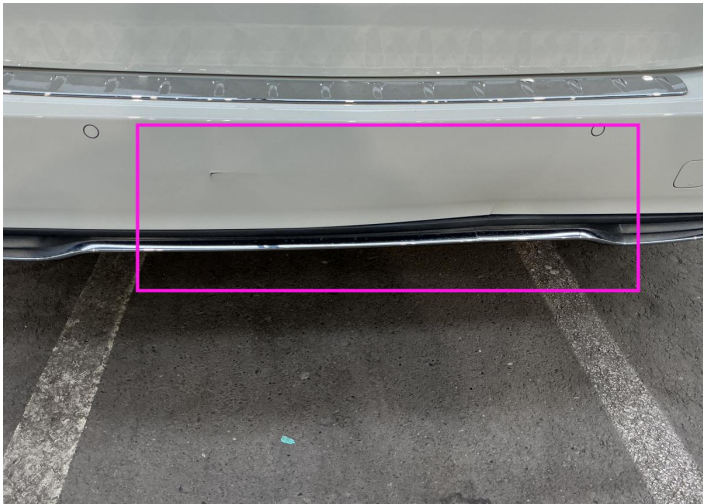
Component		Damage	Comments
1	Bumper / Front	Bodywork / Breakage	
2	Bumper / Front	Paint / Scratch / Scuff	
3	Bumper / Back	Bodywork / Breakage / Crack	
4	Bumper / Back	Paint / Scratch / Scuff	
5	Seat / Front Left	Interior / Worn - out	



1. Bumper / Front
Bodywork / Breakage -



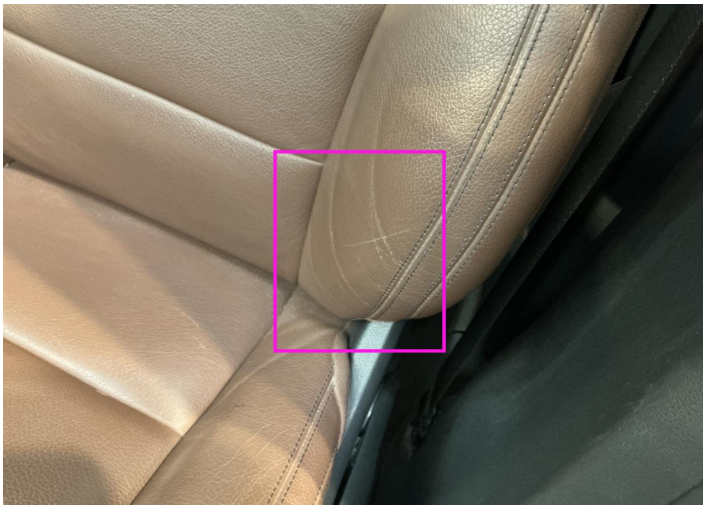
2. Bumper / Front
Paint / Scratch / Scuff -



3. Bumper / Back
Bodywork / Breakage / Crack -



4. Bumper / Back
Paint / Scratch / Scuff -



5. Seat / Front Left
Interior / Worn - out -

Mechanical Condition

Control Lights

ABS Warning Light	✓	ESP Fault/Traction Control Malfunction Light	✓
Airbag Warning Light	✓	Oil Pressure Warning Light	✓
Brake Warning Light	✓	Power Steering Warning Light	✓
Alternator / Battery	✓	No Dashboard Lights	✓
Display Defect	✓	Service Light	✓
Tire Pressure Monitoring System	✓		

Engine

Engine Status / EML	✓	Engine Leak Visible	✓
Engine Starts	✓		

Gearbox

Gear Box	✓
----------	---

Equipments Test

Electric Windows	✓	Navigation System	✓
AC / Heating System	✓	Main & Spare Keys Functioning	✓
Parking Sensors / Cameras Functioning	✓		

Levels

Brakes Fluid	✓	Coolant Fluid	✓
--------------	---	---------------	---

Test Drive Inspection

Steering Wheel

Steering | Noise / Anomaly

Engine

Engine Noise The Gears Scratch / Skip / Abnormal Operation

Fume Quantity Power Loss

Brake

Brake System Anomaly

Clutch

Clutch Functioning

General

Test Driven Status

- No troubles detected, good condition or correct tests, according to vehicle age and mileage
- Damages or malfunction detected that requires repairs by the buyer
- Not applicable
- Not tested

Disclaimer

Please also note the "UserGuide condition report", which shows the scope of the vehicle description. [User Guide](#)