



MERCEDES-BENZ B-Klasse B 200 CDI (BlueEFFICIENCY)

VIN NO WDD2462011J199619
Registration Number 011J199619



MOT Date

2026-08-01

Last Service



Number of Owners

1

Last Service Mileage



Number of Keys

2

First Registration Date

2013-08-19

Odometer Reading

288707 km

Country First Registered

Germany

Inspection Report Summary

Customer	BCA Online	Report Number	P20250520090806
Inspection Date / Place	2025-05-20 / BCA Neuss	Cosmetic Grade	5

Vehicle Summary

Vehicle Condition	Runner	VAT Type	Margin
Fuel Type	Diesel	Road Worthy	Yes
Colour	Black	Engine Size (cc)	1796
Engine Size	1.8	No of Doors	5
Body Type	Stationwagon / Estate	Drive Train	Front
Seat Colour		No of Seats	5
Seat Covering Name	Schwarz	Seat Covering	Cloth
Charging Cables		NEDC CO2 Rating (q/km)	114
Gearbox Type	Manual		

Vehicle History & Documents

Service Book Available	-	Next Service Mileage	km
Previous Usage		Imported	No
Manufacturer Warrenty			







Equipment

Tinted Glass	Alloys wheels	Bi Xenon Headlamps	Cruise control
Front parking sensors	Remote central locking	Stability control	Radio
Airbag Status	Anti-lock braking	Bluetooth telephone interface	Diesel particulate filter
Remote adjusting wing mirrors	Satellite navigation	Electrically folding wing mirrors	Rear parking sensors

Equipment Details

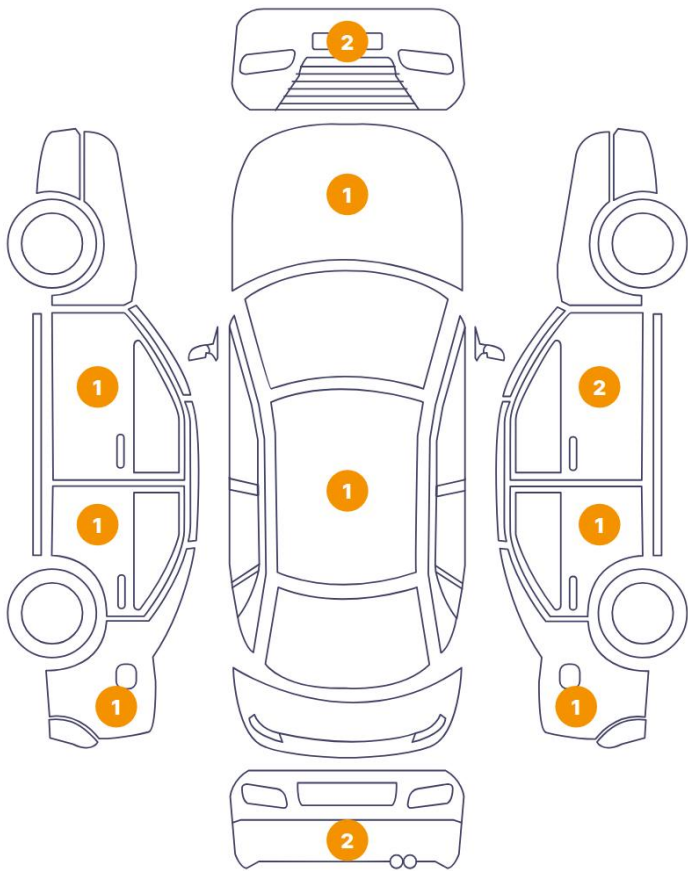
Air Conditioning	Yes	Alloy Wheel Size	16
Extra Wheel / Tyre Set	Winter Tyres - Alloy	Seat Heating	Front

Wheels & Tyres

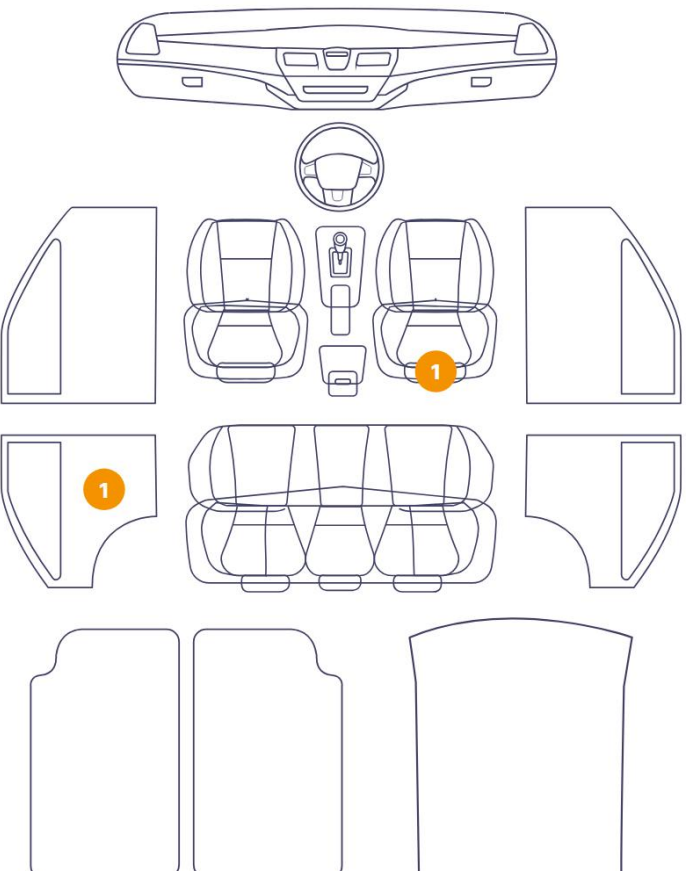
Right Front Tyre Depth	4	Left Front Tyre Depth	4
Right Rear Tyre Depth	4	Left Rear Tyre Depth	4

Cosmetic Damage

13 Damages



3 Damages



Component		Damage	Comments
1	Roof	Bodywork / Dent / Dent	
2	Door / Front Left	Paint / Scratch / Scuff	
3	Door / Back Left	Paint / Scratch / Scuff	
4	Panel Filling / Back Left	Interior / Holed	
5	Side Panel / Back Left	Paint / Scratch / Scuff	
6	Bumper / Back	Paint / Scratch / Scuff	
7	Tailgate Upholstery / Back	Interior / Scraped	
8	Bumper / Back	Paint / Scratch / Scuff	
9	Side Panel / Back Right	Bodywork / Dent / Dent	
10	Seat / Front Right	Interior / Scraped	
11	Door / Back Right	Paint / Scratch / Scuff	
12	Door / Front Right	Paint / Scratch / Scuff	
13	Door / Front Right	Paint / Scratch / Scuff	

14	Bumper / Front	Paint / Scratch / Scuff
15	Bumper / Front	Paint / Scratch / Scuff
16	Hood	Bodywork / Dent / Dent



1. Roof
Bodywork / Dent / Dent -



2. Door / Front Left
Paint / Scratch / Scuff -



3. Door / Back Left
Paint / Scratch / Scuff -



4. Panel Filling / Back Left
Interior / Holed -



5. Side Panel / Back Left
Paint / Scratch / Scuff -



6. Bumper / Back
Paint / Scratch / Scuff -



7. Tailgate Upholstery / Back Interior / Scraped -



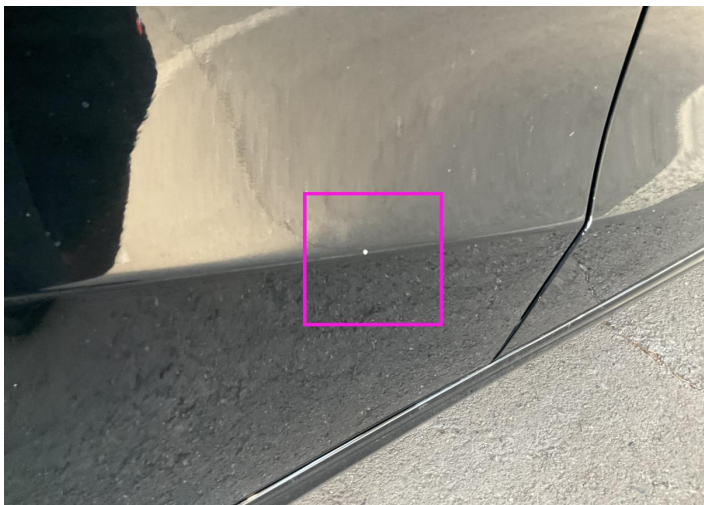
8. Bumper / Back Paint / Scratch / Scuff -



9. Side Panel / Back Right Bodywork / Dent / Dent -



10. Seat / Front Right Interior / Scraped -



11. Door / Back Right Paint / Scratch / Scuff -



12. Door / Front Right Paint / Scratch / Scuff -



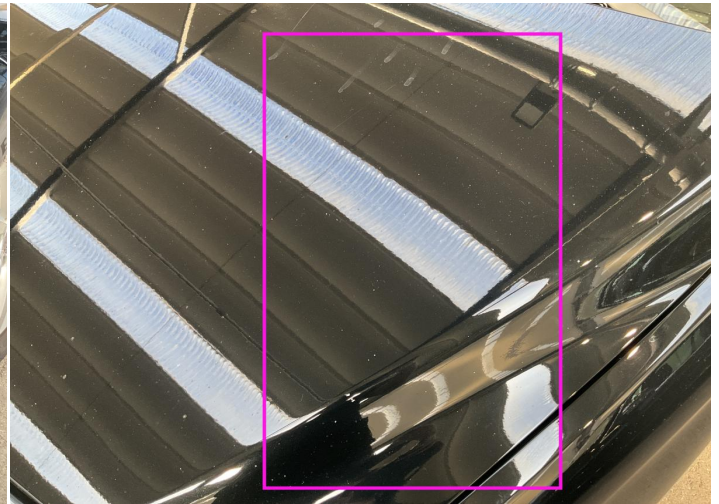
13. Door / Front Right
Paint / Scratch / Scuff -



14. Bumper / Front
Paint / Scratch / Scuff -



15. Bumper / Front
Paint / Scratch / Scuff -



16. Hood
Bodywork / Dent / Dent -

Mechanical Condition

Control Lights

Display Defect	✓	ABS Warning Light	✓
ESP Fault/Traction Control Malfunction Light	✓	Diesel Particulate Filter Light	✓
Airbag Warning Light	✓	Oil Pressure Warning Light	✓
Brake Warning Light	✓	Power Steering Warning Light	✓
Alternator / Battery	✓	No Dashboard Lights	✓

Engine

Engine Status / EML	✓	Engine Leak Visible	✓
Engine Starts	✓		

Gearbox

Gear Box	✓
----------	---

Equipments Test

Electric Windows	✓	Navigation System	✓
Audio Equipment	✓	Parking Sensors / Cameras Functioning	✓
AC / Heating System	✓	Other Equipments	✓

Levels

Coolant Fluid	✓
---------------	---

Test Drive Inspection

Steering Wheel			
Steering Noise / Anomaly		✓	
Engine			
Engine Noise	✓	The Gears Scratch / Skip / Abnormal Operation	✓
Fume Quantity	✓	Power Loss	✓
Clutch			
Clutch Functioning		✓	
Brake			
Brake System Anomaly		✓	
General			
Test Driven Status		✓	
✓ <i>No troubles detected, good condition or correct tests, according to vehicle age and mileage</i>			
! <i>Damages or malfunction detected that requires repairs by the buyer</i>			
NA <i>Not applicable</i>			
= <i>Not tested</i>			

Disclaimer

Please also note the "UserGuide condition report", which shows the scope of the vehicle description.

[User Guide](#)