



MERCEDES-BENZ B-Klasse

B 180 Autotronic

VIN NO WDD2452321J481453

Registration Number 321J481453



MOT Date

2026-07-01

Last Service



Number of Owners

2

Last Service Mileage



Number of Keys

2

First Registration Date

2009-04-22

Odometer Reading

165180 km

Country First Registered

Germany

Inspection Report Summary

Customer	BCA Online	Report Number	P20250926093626
Inspection Date / Place	2025-09-26 / ARS Altmann AG Riedstadt	Cosmetic Grade	3

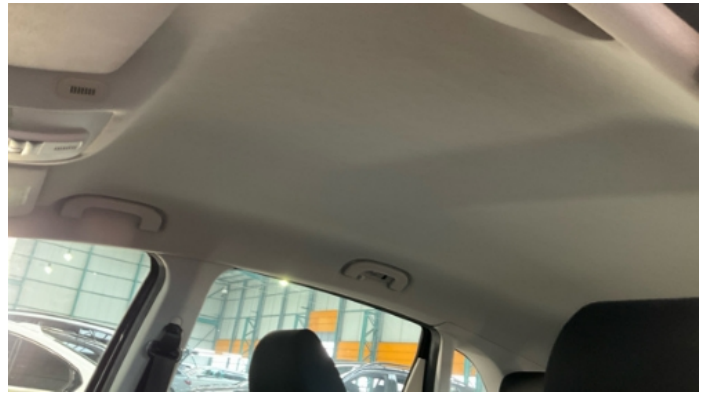
Vehicle Summary

Vehicle Condition	Runner	VAT Type	Margin
Fuel Type	Petrol	Road Worthy	Yes
Colour	Black	Engine Size (cc)	1699
Engine Size	1.7	No of Doors	5
Body Type	Stationwagon / Estate	Drive Train	Front
Seat Colour		No of Seats	5
Seat Covering Name		Seat Covering	Cloth
Charging Cables		NEDC CO2 Rating (q/km)	173
Gearbox Type	Automatic		

Vehicle History & Documents

Service Book Available	Missing	Next Service Mileage	km
Previous Usage		Imported	No
Manufacturer Warrenty			







Equipment

Trip Computer	Alloys wheels	Bluetooth telephone interface	Front fog lamps
Heated wing mirrors	Remote central locking	CD - multichanger	Electrically folding wing mirrors
Rear parking sensors	Airbag Status	Anti-lock braking	Cruise control
Front parking sensors	Remote adjusting wing mirrors	Stability control	CD Player
Radio			

Equipment Details

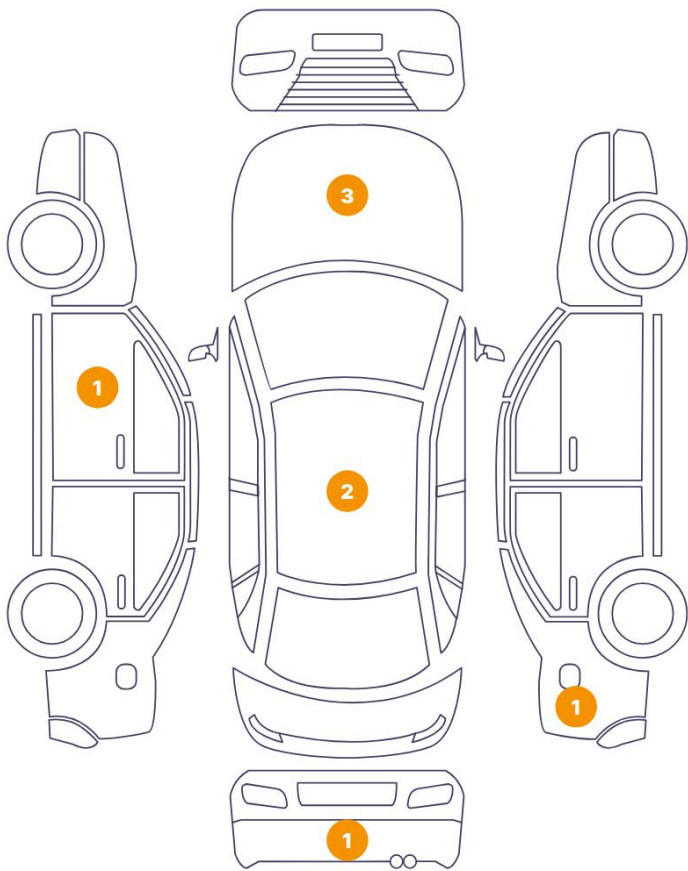
Air Conditioning	Yes	Alloy Wheel Size	16
Seat Heating	Front		

Wheels & Tyres

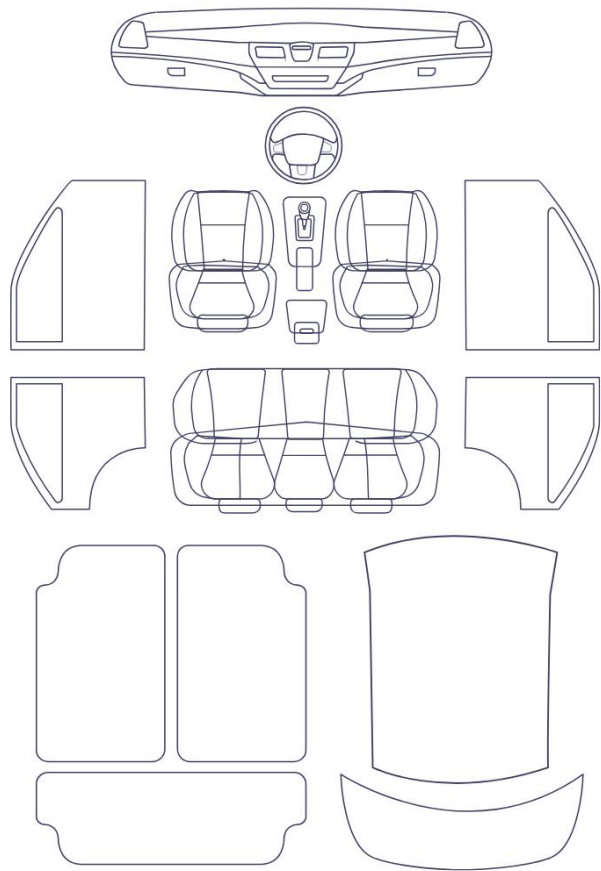
Right Front Tyre Depth	6	Left Front Tyre Depth	6
Right Rear Tyre Depth	6	Left Rear Tyre Depth	6

Cosmetic Damage

8 Schäden



0 Schäden



Component		Damage	Comments
1	Hood	Bodywork / Dent / Dent	
2	Hood	Bodywork / Dent / Dent	
3	Hood	Bodywork / Dent / Dent	
4	Side Panel / Back Right	Paint / Poor Previous Repair	
5	Bumper / Back	Paint / Scratch / Scuff	
6	Roof	Paint / Scratch / Scuff	
7	Roof	Bodywork / Dent / Dent	
8	Door / Front Left	Paint / Scratch / Scuff	



1. Hood
Bodywork / Dent / Dent -



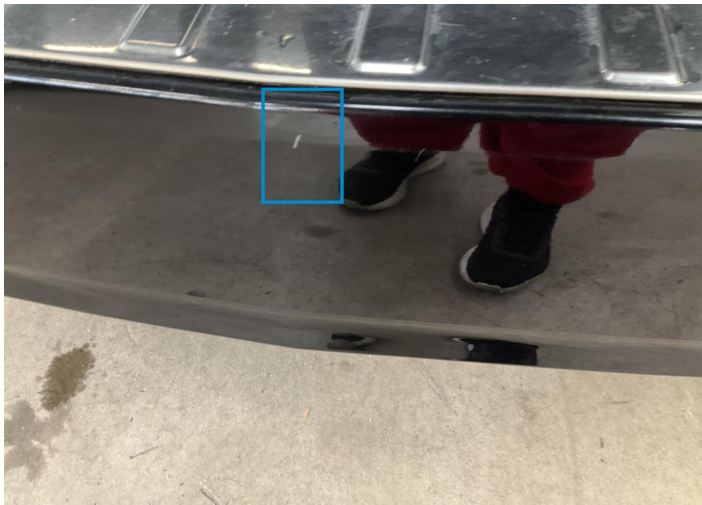
2. Hood
Bodywork / Dent / Dent -



3. Hood
Bodywork / Dent / Dent -



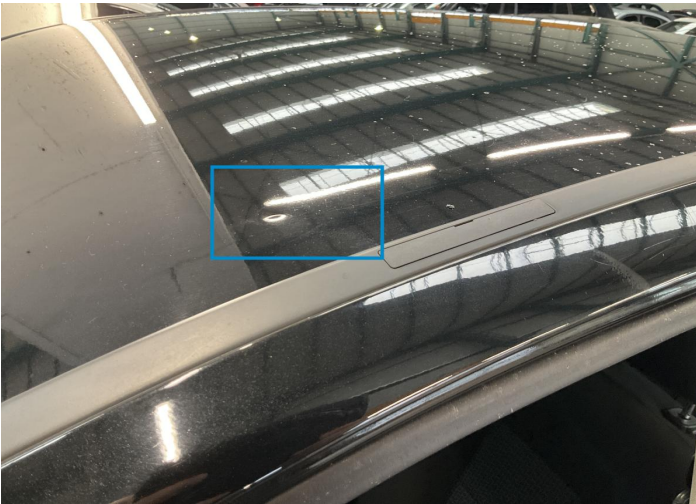
4. Side Panel / Back Right
Paint / Poor Previous Repair -



5. Bumper / Back
Paint / Scratch / Scuff -



6. Roof
Paint / Scratch / Scuff -



7. Roof
Bodywork / Dent / Dent -



8. Door / Front Left
Paint / Scratch / Scuff -

Mechanical Condition

Engine

Engine Starts	✓	Engine Status / EML	✓
Engine Leak Visible	✓		

Equipments Test

Central Locking	✓	Electric Windows	✓
Audio Equipment	✓	AC / Heating System	✓
Other Equipments	✓	Main & Spare Keys Functioning	✓
Parking Sensors / Cameras Functioning	✓		

Control Lights

ABS Warning Light	✓	ESP Fault/Traction Control Malfunction Light	✓
Airbag Warning Light	✓	Oil Pressure Warning Light	✓
Brake Warning Light	✓	Power Steering Warning Light	✓
Alternator / Battery	✓	No Dashboard Lights	✓
Display Defect	✓	Service Light	!
Tire Pressure Monitoring System	✓		

Gearbox

Gear Box	✓
----------	---

Levels

Brakes Fluid	✓	Coolant Fluid	✓
--------------	---	---------------	---

Test Drive Inspection

Steering Wheel			
Steering Noise / Anomaly		✔	
Engine			
Engine Noise	✔	Fume Quantity	✔
The Gears Scratch / Skip / Abnormal Operation	!	Power Loss	✔
Brake			
Brake System Anomaly	✔		
General			
Test Driven Status	✔		
✔ <i>No troubles detected, good condition or correct tests, according to vehicle age and mileage</i>			
! <i>Damages or malfunction detected that requires repairs by the buyer</i>			
NA <i>Not applicable</i>			
☐ <i>Not tested</i>			

Disclaimer

Please also note the "UserGuide condition report", which shows the scope of the vehicle description.

[User Guide](#)