



MERCEDES-BENZ B-Klasse

B 170

VIN NO WDD2452321J143560
Registration Number 321J143560



MOT Date	Number of Owners	Number of Keys	Odometer Reading
2026-02-01	3	2	93135 km
Last Service	Last Service Mileage	First Registration Date	Country First Registered
-	-	2006-07-22	Germany

Inspection Report Summary

Customer	BCA Online	Report Number	P20250915095341
Inspection Date / Place	2025-09-15 / BCA Heidenheim	Cosmetic Grade	5

Vehicle Summary

Vehicle Condition	Runner	VAT Type	Margin
Fuel Type	Petrol	Road Worthy	Yes
Colour	Silver	Engine Size (cc)	1699
Engine Size	1.7	No of Doors	5
Body Type	Stationwagon / Estate	Drive Train	Front
Seat Colour		No of Seats	5
Seat Covering Name	Grau	Seat Covering	Cloth
Charging Cables		NEDC CO2 Rating (q/km)	163
Gearbox Type	Manual		

Vehicle History & Documents

Service Book Available	Missing	Next Service Mileage	km
Previous Usage		Imported	No
Manufacturer Warrenty			







Equipment

Airbag Status	Front fog lamps	Remote adjusting wing mirrors	Stability control
Radio	Anti-lock braking	Front parking sensors	Remote central locking
CD Player	Rear parking sensors		

Equipment Details

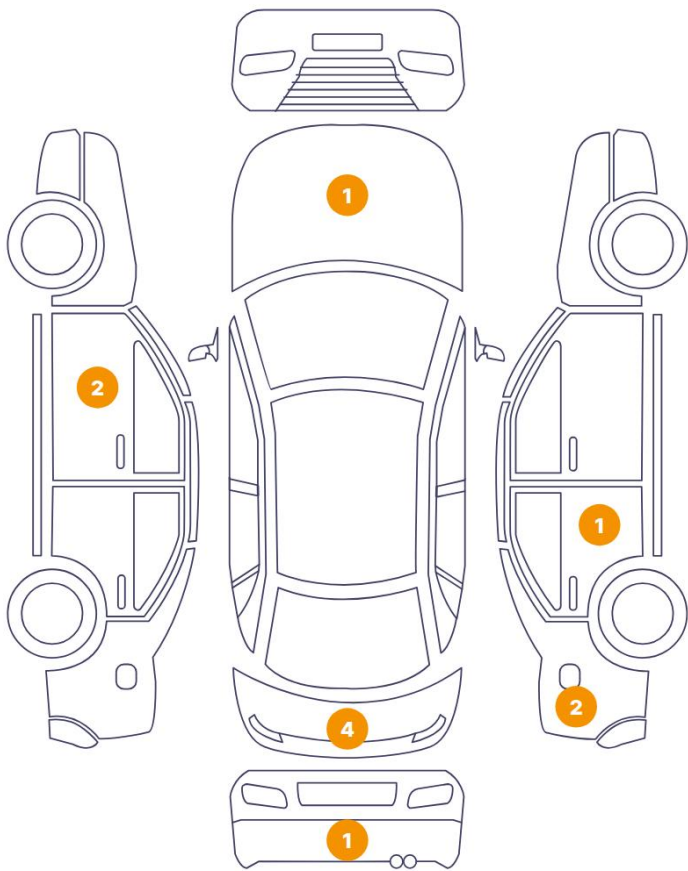
Air Conditioning	Yes	Extra Wheel / Tyre Set	Winter Tyres - Steel
Seat Heating	Front		

Wheels & Tyres

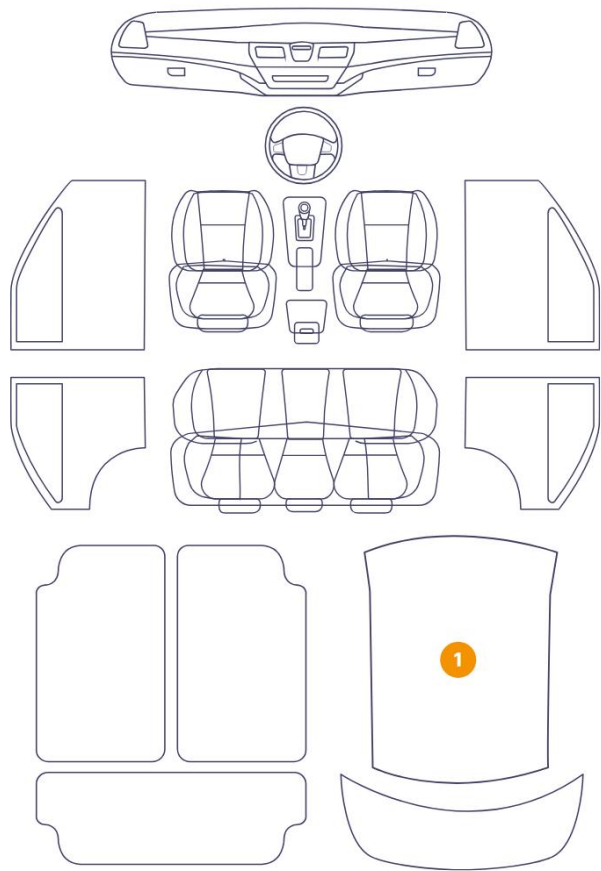
Right Front Tyre Depth	5	Left Front Tyre Depth	5
Right Rear Tyre Depth	5	Left Rear Tyre Depth	5
Extra Wheel - 1 Tyre Depth	5	Extra Wheel - 2 Tyre Depth	6
Extra Wheel - 3 Tyre Depth	5	Extra Wheel - 4 Tyre Depth	5

Cosmetic Damage

11 Schäden



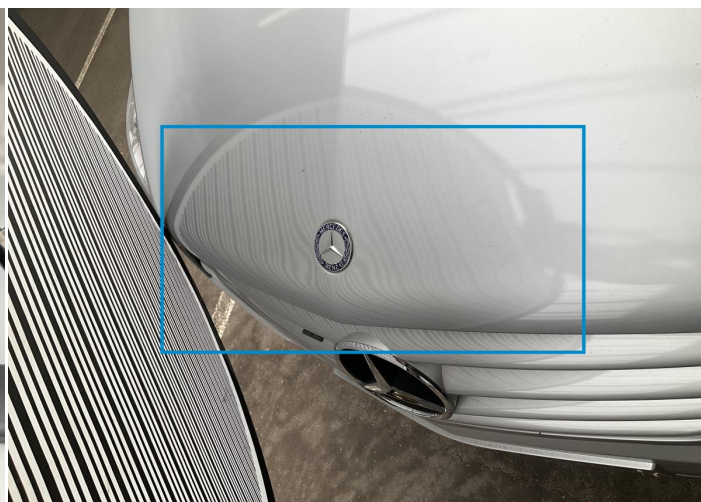
1 Schäden



Component		Damage	Comments
1	Side Panel / Back Right	Paint / Poor Previous Repair	
2	Hood	Bodywork / Dent / Dent	
3	Side Panel / Back Right	Paint / Scratch / Scuff	
4	Door / Back Right	Paint / Scratch / Scuff	
5	Bumper / Back	Bodywork / Breakage / Hole	
6	Tailgate	Paint / Scratch / Scuff	
7	Tailgate	Paint / Scratch / Scuff	
8	Tailgate	Bodywork / Dent / Dent	
9	Tailgate	Bodywork / Dent / Dent	
10	Door / Front Left	Paint / Scratch / Scuff	
11	Door / Front Left	Paint / Scratch / Scuff	
12	Roof Upholstery	Interior / Holed	



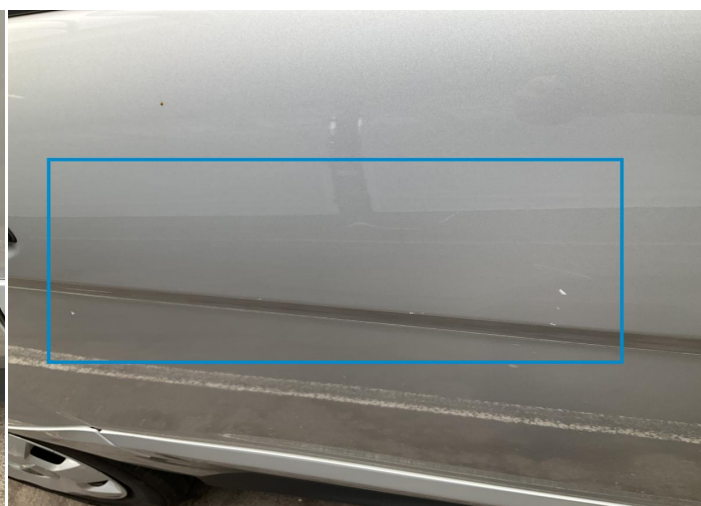
1. Side Panel / Back Right
Paint / Poor Previous Repair -



2. Hood
Bodywork / Dent / Dent -



3. Side Panel / Back Right
Paint / Scratch / Scuff -



4. Door / Back Right
Paint / Scratch / Scuff -



5. Bumper / Back
Bodywork / Breakage / Hole -



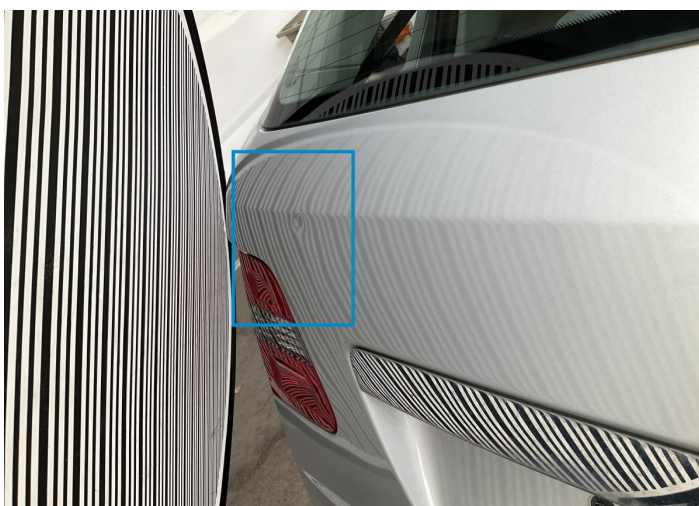
6. Tailgate
Paint / Scratch / Scuff -



7. Tailgate
Paint / Scratch / Scuff -



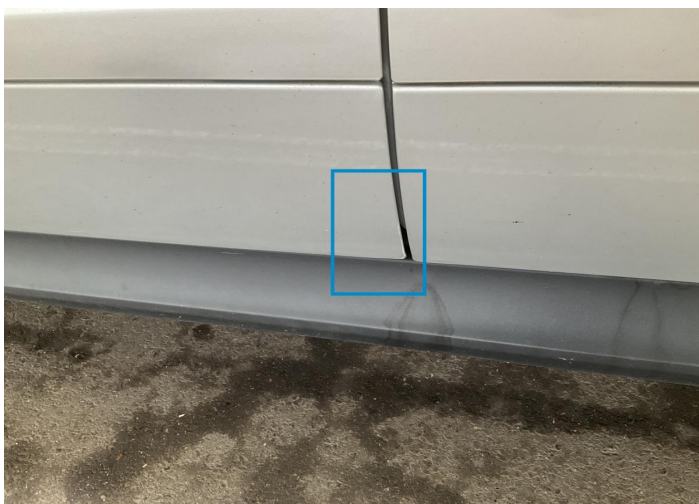
8. Tailgate
Bodywork / Dent / Dent -



9. Tailgate
Bodywork / Dent / Dent -



10. Door / Front Left
Paint / Scratch / Scuff -



11. Door / Front Left
Paint / Scratch / Scuff -



12. Roof Upholstery
Interior / Holed -

Mechanical Condition

Control Lights

Display Defect	✓	Service Light	!
ABS Warning Light	✓	ESP Fault/Traction Control Malfunction Light	✓
Airbag Warning Light	✓	Oil Pressure Warning Light	✓
Brake Warning Light	✓	Power Steering Warning Light	✓
Alternator / Battery	✓	No Dashboard Lights	✓

Equipments Test

Central Locking	✓	Main & Spare Keys Functioning	✓
Electric Windows	✓	Audio Equipment	✓
Parking Sensors / Cameras Functioning	!	AC / Heating System	✓
Other Equipments	✓		

Engine

Engine Status / EML	✓	Engine Leak Visible	!
Engine Starts	✓		

Levels

Brakes Fluid	✓	Coolant Fluid	✓
--------------	---	---------------	---

Test Drive Inspection

Steering Wheel			
Steering Noise / Anomaly		✔	
Engine			
Engine Noise	✔	The Gears Scratch / Skip / Abnormal Operation	✔
Fume Quantity	✔	Power Loss	✔
Clutch			
Clutch Functioning		✔	
Brake			
Brake System Anomaly		✔	
General			
Test Driven Status		✔	
✔ <i>No troubles detected, good condition or correct tests, according to vehicle age and mileage</i>			
! <i>Damages or malfunction detected that requires repairs by the buyer</i>			
NA <i>Not applicable</i>			
= <i>Not tested</i>			

Disclaimer

Please also note the "UserGuide condition report", which shows the scope of the vehicle description.

[User Guide](#)