



MERCEDES-BENZ S-Klasse

S 560 L 4Matic 9G-TRONIC

VIN NO WDD2221861A432013
Registration Number 861A432013



MOT Date	Number of Owners	Number of Keys	Odometer Reading
2026-02-01	2	2	164699 km
Last Service	Last Service Mileage	First Registration Date	Country First Registered
-	-	2019-02-07	Germany

Inspection Report Summary

Customer	BCA Online	Report Number	P20250714064707
Inspection Date / Place	2025-07-14 / ARS Altmann AG Riedstadt	Cosmetic Grade	4

Vehicle Summary

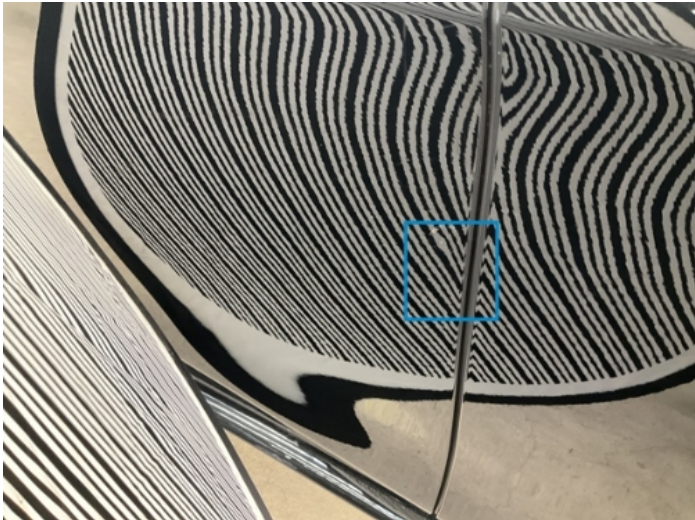
Vehicle Condition	Runner	VAT Type	Margin
Fuel Type	Petrol	Road Worthy	Yes
Colour	Black	Engine Size (cc)	3982
Engine Size	4.0	No of Doors	4
Body Type	Sedan	Drive Train	All-Wheel-Drive permanent
Seat Colour		No of Seats	5
Seat Covering Name		Seat Covering	Synthetic Leather
Charging Cables		NEDC CO2 Rating (q/km)	225
Gearbox Type	Automatic		

Vehicle History & Documents

Service Book Available	Missing	Next Service Mileage	km
Previous Usage		Imported	No
Manufacturer Warrenty			







Equipment

Tinted Glass	USB Socket	Airbag Status	Anti-lock braking
Cabin Pre Heating	Digital Radio	Front parking sensors	Heated wing mirrors
Remote central locking	Satellite navigation	Stability control	Electrically adjustable seats
Electricbackseatadj.	Leather steering wheel	Radio	Trip Computer
360°camera	Alloys wheels	Bluetooth telephone interface	Cruise control
Digitaldashboard	Head up Display	Remote adjusting wing mirrors	Reversing Camera
Seatventilation	Sunroof	Electrically folding wing mirrors	Electrictailgate
LED Headlamps	Rear parking sensors		

Equipment Details

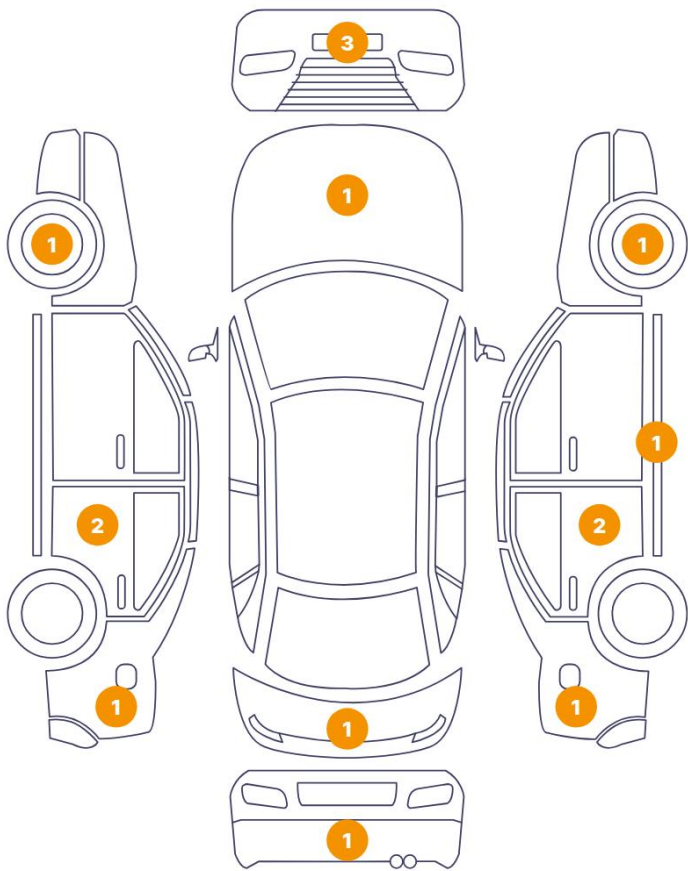
Air Conditioning	Four Zone Climate Control	Alloy Wheel Size	20
Seat Heating	Front and Rear	Sunroof Type	Tilt/Slide Glass

Wheels & Tyres

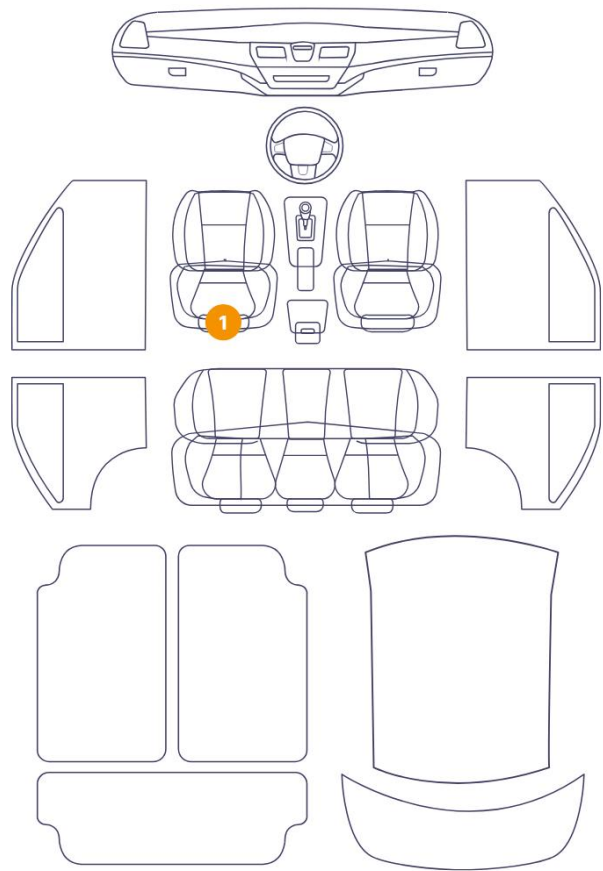
Right Front Tyre Depth	3	Left Front Tyre Depth	3
Right Rear Tyre Depth	6	Left Rear Tyre Depth	6

Cosmetic Damage

15 Schäden

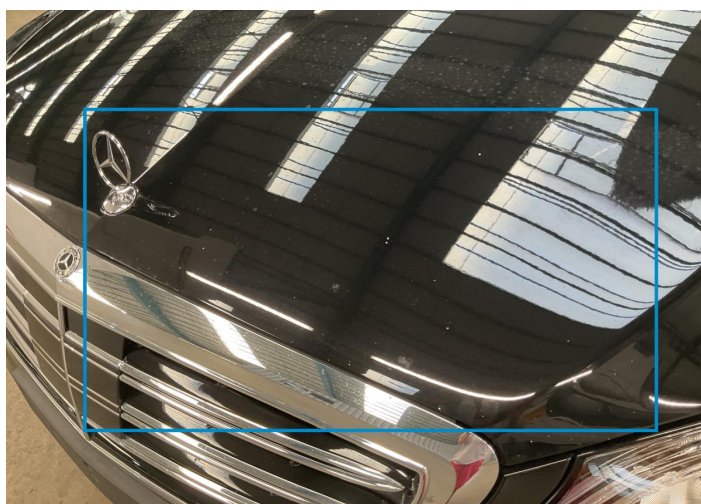


1 Schäden



Component		Damage	Comments
1	Hood	Paint / Stone Chip	
2	Bumper / Front	Paint / Scratch / Scuff	
3	Bumper / Front	Bodywork / Dent / Dent	
4	Bumper / Front	Bodywork / Dent / Dent	
5	Rim / Front Left	Out of Bodywork / Scratch	
6	Seat / Front Left	Interior / Scratched	
7	Door / Back Left	Paint / Poor Previous Repair	
8	Pillar / Back Left	Paint / Scratch / Scuff	
9	Bumper / Back	Paint / Scratch / Scuff	
10	Tailgate	Paint / Scratch / Scuff	
11	Fender / Back Right	Paint / Scratch / Scuff	
12	Door / Back Right	Paint / Scratch / Scuff	

13	Rocker Panel / Center Right	Paint / Scratch / Scuff
14	Rim / Front Right	Out of Bodywork / Scratch
15	Door / Back Right	Bodywork / Dent / Dent
16	Fender / Back Left	Paint / Scratch / Scuff



1. Hood
Paint / Stone Chip -



2. Bumper / Front
Paint / Scratch / Scuff -



3. Bumper / Front
Bodywork / Dent / Dent -



4. Bumper / Front
Bodywork / Dent / Dent -



5. Rim / Front Left
Out of Bodywork / Scratch -



6. Seat / Front Left
Interior / Scratched -



7. Door / Back Left
Paint / Poor Previous Repair -



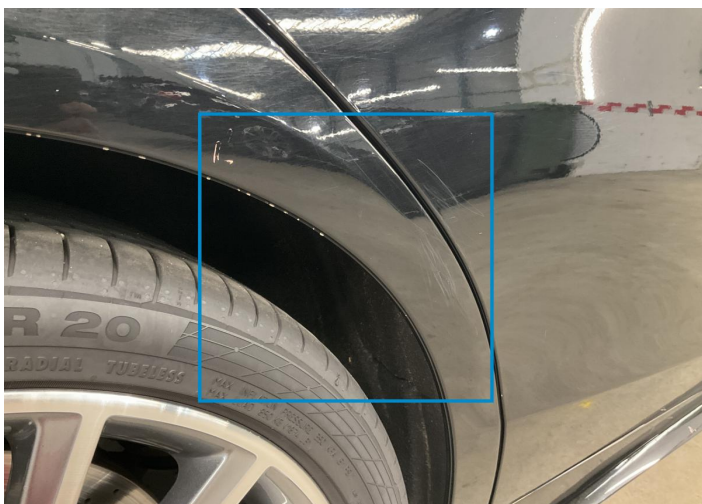
8. Pillar / Back Left
Paint / Scratch / Scuff -



9. Bumper / Back
Paint / Scratch / Scuff -



10. Tailgate
Paint / Scratch / Scuff -



11. Fender / Back Right
Paint / Scratch / Scuff -



12. Door / Back Right
Paint / Scratch / Scuff -



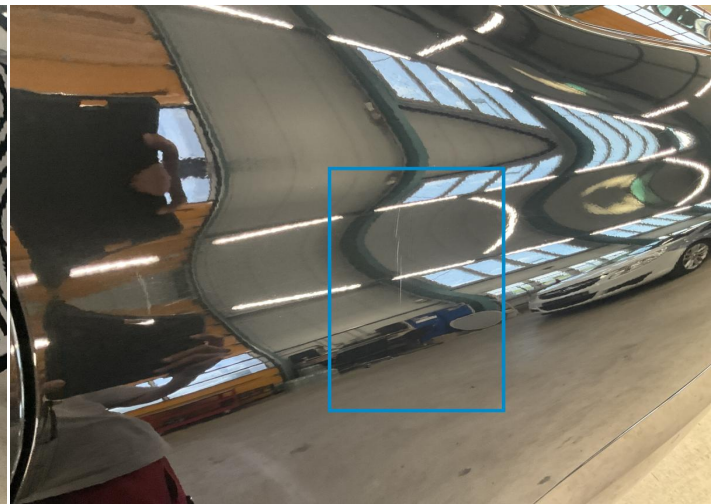
13. Rocker Panel / Center Right
Paint / Scratch / Scuff -



14. Rim / Front Right
Out of Bodywork / Scratch -



15. Door / Back Right
Bodywork / Dent / Dent -



16. Fender / Back Left
Paint / Scratch / Scuff -

Mechanical Condition

Control Lights

Display Defect	✓	Service Light	✓
ABS Warning Light	✓	ESP Fault/Traction Control Malfunction Light	✓
Airbag Warning Light	✓	Oil Pressure Warning Light	✓
Brake Warning Light	✓	Power Steering Warning Light	✓
Alternator / Battery	✓	No Dashboard Lights	✓
Tire Pressure Monitoring System	✓		

Equipments Test

Other Equipments	✓	Central Locking	✓
Main & Spare Keys Functioning	✓	Electric Windows	✓
Navigation System	✓	Audio Equipment	✓
Parking Sensors / Cameras Functioning	✓	AC / Heating System	✓

Engine

Engine Starts	⚠	Engine Status / EML	✓
Engine Leak Visible	✓		

Gearbox

Gear Box	✓
----------	---

Levels

Brakes Fluid	✓	Coolant Fluid	✓
--------------	---	---------------	---

Test Drive Inspection

Steering Wheel

Steering | Noise / Anomaly NA

Engine

Engine Noise	✓	The Gears Scratch / Skip / Abnormal Operation	✓
Fume Quantity	✓	Power Loss	✓

Brake

Brake System Anomaly ✓

General

Test Driven Status ✓

- ✓ No troubles detected, good condition or correct tests, according to vehicle age and mileage
- ! Damages or malfunction detected that requires repairs by the buyer
- NA Not applicable
- ☐ Not tested

Disclaimer

Please also note the "UserGuide condition report", which shows the scope of the vehicle description. [User Guide](#)