



MERCEDES-BENZ S-Klasse  
S 560 L 4Matic 9G-TRONIC

VIN NO WDD2221861A432013  
Registration Number 861A432013



MOT Date	Number of Owners	Number of Keys	Odometer Reading
2026-02-01	2	2	164699 km
Last Service	Last Service Mileage	First Registration Date	Country First Registered
-	-	2019-02-07	Germany

Inspection Report Summary

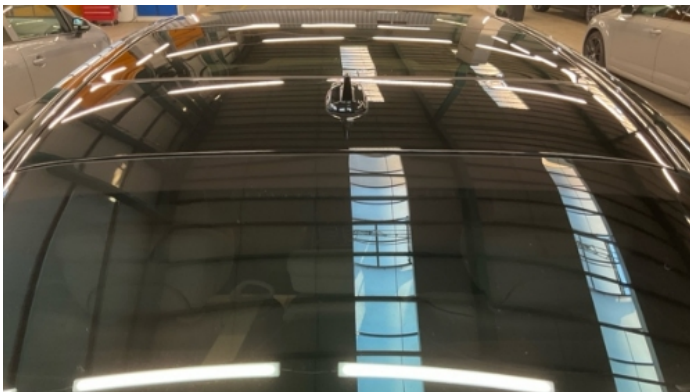
Customer	BCA Online	Report Number	P20250714064707
Inspection Date / Place	2025-07-14 / ARS Altmann AG Riedstadt	Cosmetic Grade	4

Vehicle Summary

Vehicle Condition	Runner	VAT Type	Margin
Fuel Type	Petrol	Road Worthy	Yes
Colour	Black	Engine Size (cc)	3982
Engine Size	4.0	No of Doors	4
Body Type	Sedan	Drive Train	All-Wheel-Drive permanent
Seat Colour		No of Seats	5
Seat Covering Name		Seat Covering	Synthetic Leather
Charging Cables		NEDC CO2 Rating (q/km)	225
Gearbox Type	Automatic		

Vehicle History & Documents

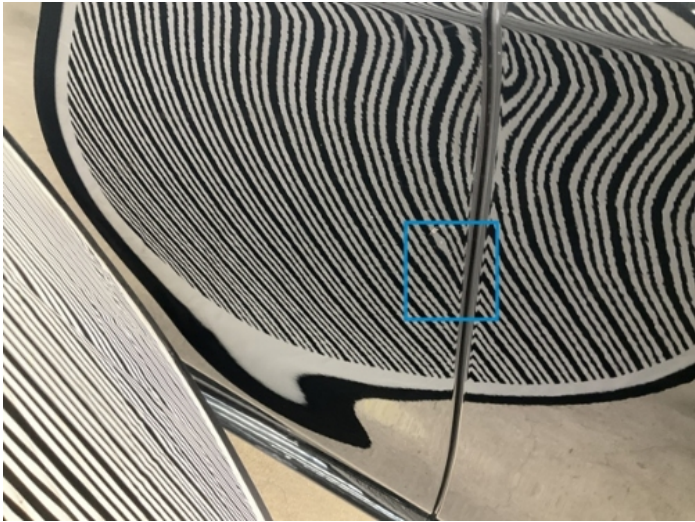
Service Book Available	Missing	Next Service Mileage	km
Previous Usage		Imported	No
Manufacturer Warrenty			











## Equipment

Tinted Glass	USB Socket	Airbag Status	Anti-lock braking
Cabin Pre Heating	Digital Radio	Front parking sensors	Heated wing mirrors
Remote central locking	Satellite navigation	Stability control	Electrically adjustable seats
Electricbackseatadj.	Leather steering wheel	Radio	Trip Computer
360°camera	Alloys wheels	Bluetooth telephone interface	Cruise control
Digitaldashboard	Head up Display	Remote adjusting wing mirrors	Reversing Camera
Seatventilation	Sunroof	Electrically folding wing mirrors	Electrictailgate
LED Headlamps	Rear parking sensors		

## Equipment Details

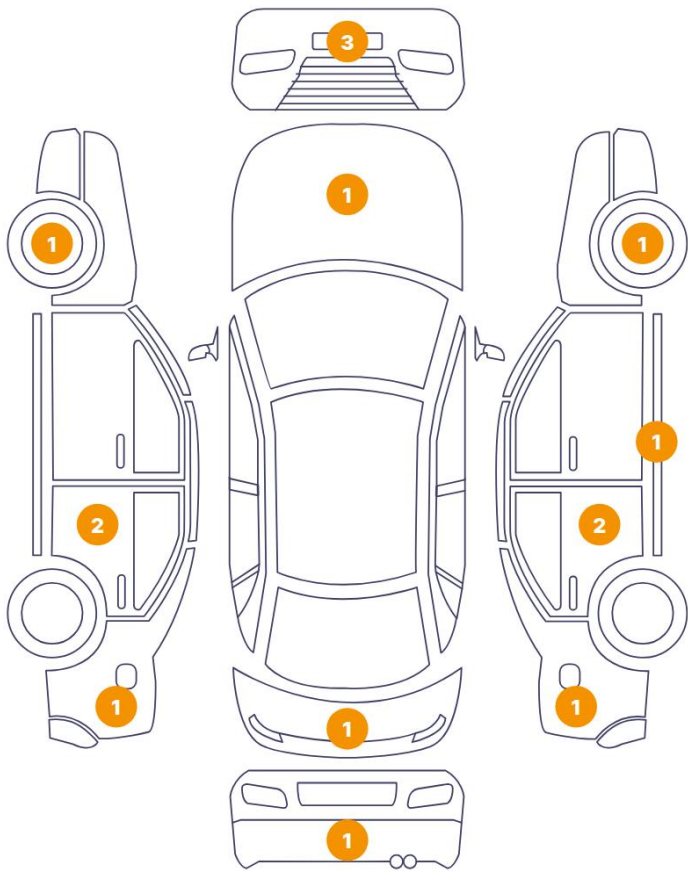
Air Conditioning	Four Zone Climate Control	Alloy Wheel Size	20
Seat Heating	Front and Rear	Sunroof Type	Tilt/Slide Glass

## Wheels & Tyres

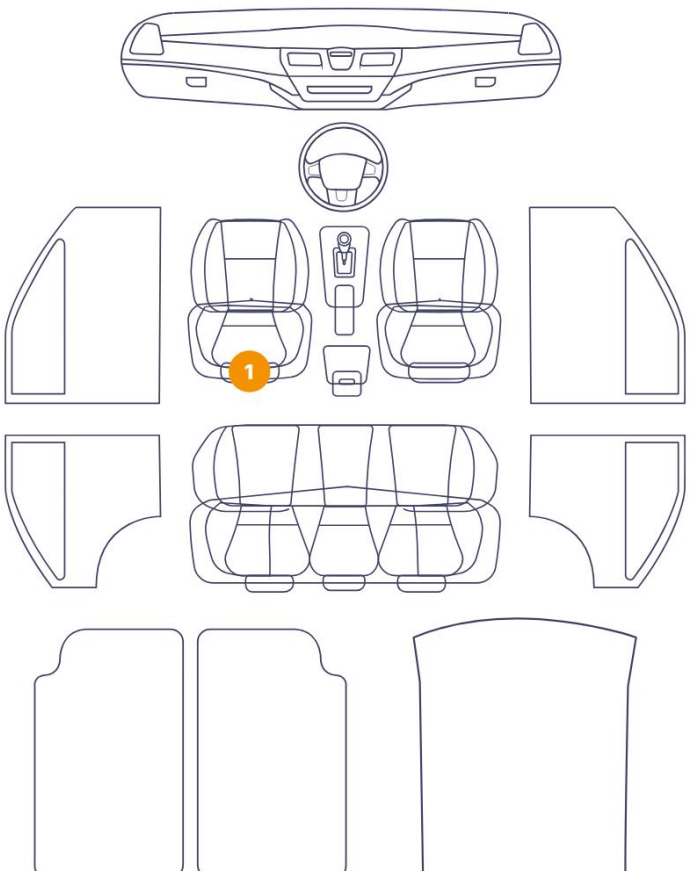
Right Front Tyre Depth	3	Left Front Tyre Depth	3
Right Rear Tyre Depth	6	Left Rear Tyre Depth	6

Cosmetic Damage

15 Schäden



1 Schäden



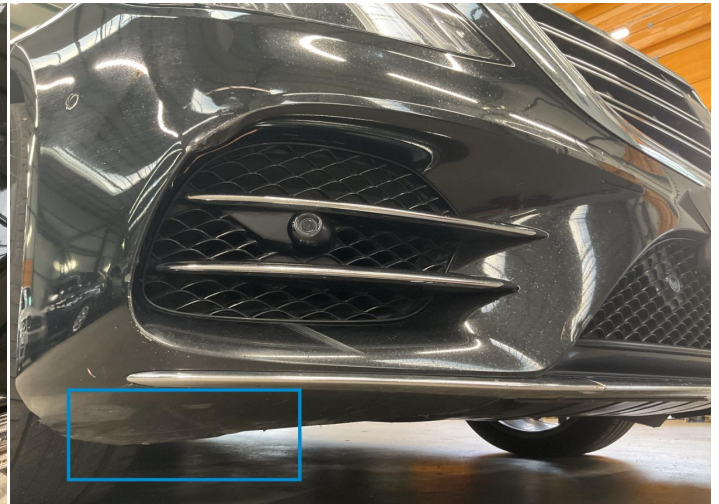
Component		Damage	Comments
1	Hood	Paint / Stone Chip	
2	Bumper / Front	Paint / Scratch / Scuff	
3	Bumper / Front	Bodywork / Dent / Dent	
4	Bumper / Front	Bodywork / Dent / Dent	
5	Rim / Front Left	Out of Bodywork / Scratch	
6	Seat / Front Left	Interior / Scratched	
7	Door / Back Left	Paint / Poor Previous Repair	
8	Pillar / Back Left	Paint / Scratch / Scuff	
9	Bumper / Back	Paint / Scratch / Scuff	
10	Tailgate	Paint / Scratch / Scuff	
11	Fender / Back Right	Paint / Scratch / Scuff	
12	Door / Back Right	Paint / Scratch / Scuff	
13	Rocker Panel / Center Right	Paint / Scratch / Scuff	

14	Rim / Front Right	Out of Bodywork / Scratch
15	Door / Back Right	Bodywork / Dent / Dent
16	Fender / Back Left	Paint / Scratch / Scuff

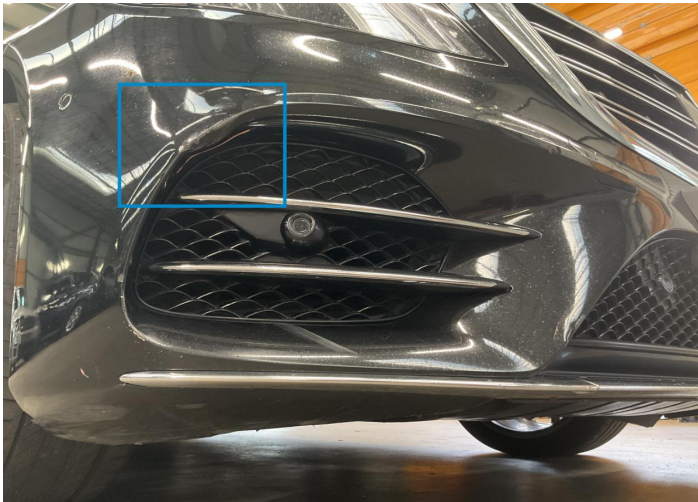




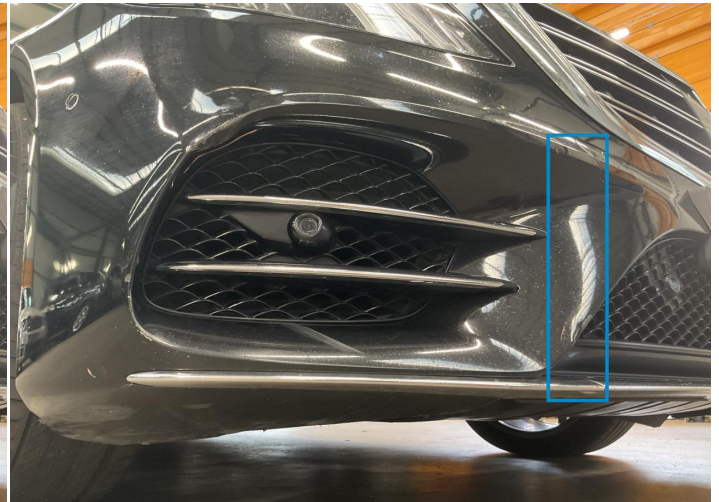
1. Hood  
Paint / Stone Chip -



2. Bumper / Front  
Paint / Scratch / Scuff -



3. Bumper / Front  
Bodywork / Dent / Dent -



4. Bumper / Front  
Bodywork / Dent / Dent -



5. Rim / Front Left  
Out of Bodywork / Scratch -



6. Seat / Front Left  
Interior / Scratched -





7. Door / Back Left  
Paint / Poor Previous Repair -



8. Pillar / Back Left  
Paint / Scratch / Scuff -



9. Bumper / Back  
Paint / Scratch / Scuff -



10. Tailgate  
Paint / Scratch / Scuff -



11. Fender / Back Right  
Paint / Scratch / Scuff -



12. Door / Back Right  
Paint / Scratch / Scuff -





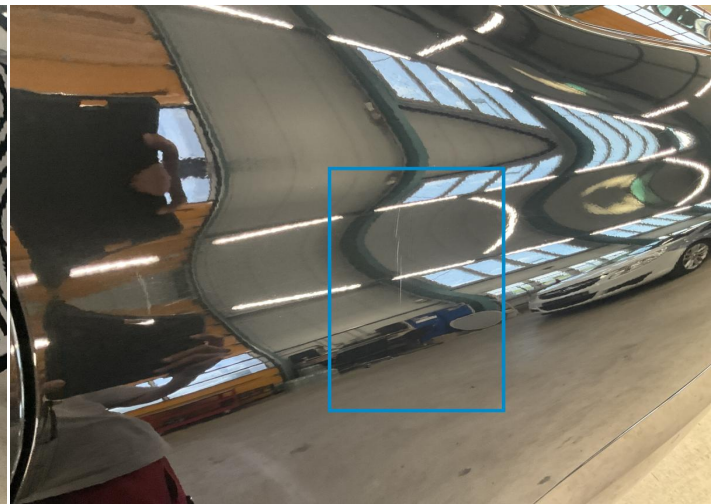
13. Rocker Panel / Center Right  
Paint / Scratch / Scuff -



14. Rim / Front Right  
Out of Bodywork / Scratch -



15. Door / Back Right  
Bodywork / Dent / Dent -



16. Fender / Back Left  
Paint / Scratch / Scuff -



## Mechanical Condition












### Engine

Engine Starts		Engine Status / EML	
Engine Leak Visible			

### Equipments Test

Central Locking		Electric Windows	
Navigation System		Audio Equipment	
AC / Heating System		Other Equipments	
Main & Spare Keys Functioning		Parking Sensors / Cameras Functioning	

### Control Lights

ABS Warning Light		ESP Fault/Traction Control Malfunction Light	
Airbag Warning Light		Oil Pressure Warning Light	
Brake Warning Light		Power Steering Warning Light	
Alternator / Battery		No Dashboard Lights	
Display Defect		Service Light	
Tire Pressure Monitoring System			

### Gearbox

Gear Box	
----------	---

### Levels

Brakes Fluid		Coolant Fluid	
--------------	---	---------------	---

Test Drive Inspection

Steering Wheel

Steering | Noise / Anomaly NA

Engine

Engine Noise	✓	The Gears Scratch / Skip / Abnormal Operation	✓
Fume Quantity	✓	Power Loss	✓

Brake

Brake System Anomaly ✓

General

Test Driven Status ✓

- ✓ No troubles detected, good condition or correct tests, according to vehicle age and mileage
- ! Damages or malfunction detected that requires repairs by the buyer
- NA Not applicable
- ☐ Not tested

Disclaimer

Please also note the "UserGuide condition report", which shows the scope of the vehicle description. [User Guide](#)