



MERCEDES Classe S W/V 222 Benzina  
S 500 V8 Maximum 4matic auto

VIN NO WDD2220851A151149  
Registration Number EY714VK



|              |                      |                         |                          |
|--------------|----------------------|-------------------------|--------------------------|
| MOT Date     | Number of Owners     | Number of Keys          | Odometer Reading         |
| 2025-02-21   | -                    | -                       | 119550 km                |
| Last Service | Last Service Mileage | First Registration Date | Country First Registered |
| -            | -                    | 2015-03-16              | Italy                    |

Inspection Report Summary

|                         |                       |                |                 |
|-------------------------|-----------------------|----------------|-----------------|
| Customer                | BCA Lodi              | Report Number  | P20250926091310 |
| Inspection Date / Place | 2025-09-26 / BCA Lodi | Cosmetic Grade | 4               |

Vehicle Summary

|                    |        |                        |                 |
|--------------------|--------|------------------------|-----------------|
| Vehicle Condition  | Runner | VAT Type               | Margin          |
| Fuel Type          | Petrol | Gearbox Type           | Sequential      |
| Colour             | Silver | Engine Size (cc)       | 4663            |
| Engine Size        | 4.7    | No of Doors            | 4               |
| Body Type          | Sedan  | Drive Train            | All-Wheel-Drive |
| Seat Colour        | Black  | No of Seats            | 5               |
| Seat Covering Name |        | Seat Covering          | Leather         |
| Charging Cables    |        | NEDC CO2 Rating (q/km) | 211             |

Vehicle History & Documents

|                        |            |                      |    |
|------------------------|------------|----------------------|----|
| Service Book Available | -          | Next Service Mileage | km |
| Previous Usage         | Normal Use | Imported             | No |
| Manufacturer Warrenty  |            |                      |    |









## Equipment

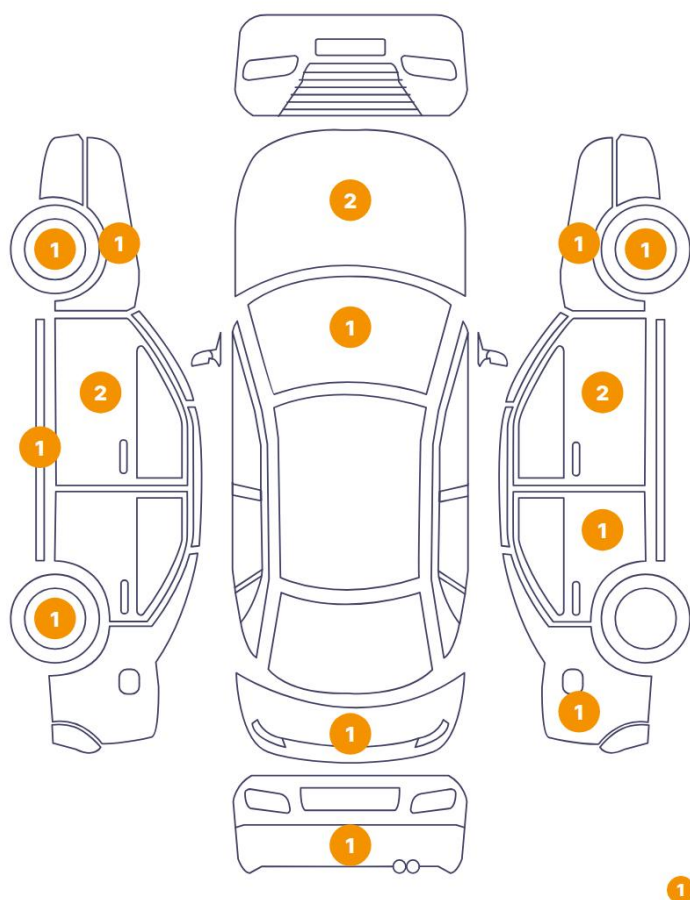
|                      |                               |                                   |                       |
|----------------------|-------------------------------|-----------------------------------|-----------------------|
| CD – single          | Power assisted steering       | Rain sensitive windscreen wipers  | LED Headlamps         |
| Anti-lock braking    | Digital Radio                 | Electrically folding wing mirrors | Satellite navigation  |
| Volante multifuncion | Remote adjusting wing mirrors | Reversing Camera                  | Traction control      |
| Stability control    | Central locking               | Radio                             | Rear parking sensors  |
| Alloys wheels        | Bluetooth                     | Electrically adjustable seats     | Front parking sensors |
| Sunroof              | Full size spare wheel - steel | Remote central locking            | Cruise control        |
| Trip Computer        |                               |                                   |                       |

## Wheels & Tyres

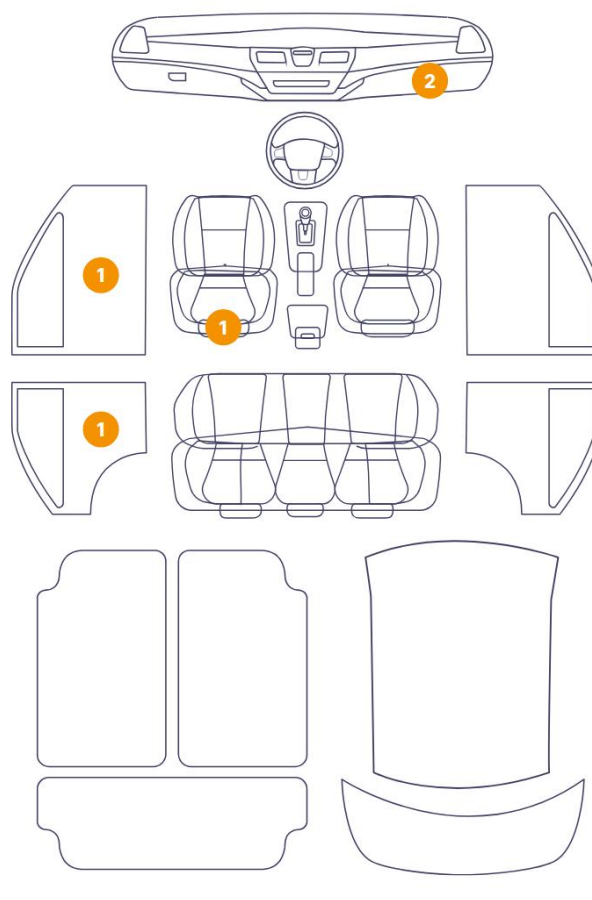
### Mounted Tires

| Tyre / Wheel Type | Summer                               |                           |
|-------------------|--------------------------------------|---------------------------|
|                   | CONTINENTAL                          | 245/45//R19 - 102Y / 2 mm |
|                   | CONTINENTAL                          | 245/45//R19 - 102Y / 2 mm |
|                   | BRIDGESTONE BRIDGESTONE-TURANZA T005 | 245/45//R19 - 102Y / 2 mm |
|                   | BRIDGESTONE BRIDGESTONE-TURANZA T005 | 245/45//R19 - 102Y / 2 mm |

**18 Danni**



### 5 Danni

6/12 - Report Number P20250926091310

|    |                            |                                 |
|----|----------------------------|---------------------------------|
| 13 | Door / Front Left          | Paint / Scratch / Line          |
| 14 | Rim / Back Left            | Out of Bodywork / Scratch       |
| 15 | Rocker Panel / Center Left | Paint / Scratch / Line          |
| 16 | Bumper / Back              | Paint / Scratch / Line          |
| 17 | Fender / Back Right        | Bodywork / Poor Previous Repair |
| 18 | Door / Back Right          | Bodywork / Dent                 |
| 19 | Door / Front Right         | Bodywork / Poor Previous Repair |
| 20 | Pillar / Front Right       | Bodywork / Poor Previous Repair |
| 21 | Hood                       | Bodywork / Dent                 |
| 22 | Tailgate                   | Bodywork / Poor Previous Repair |
| 23 | Other                      | Bodywork / Poor Previous Repair |





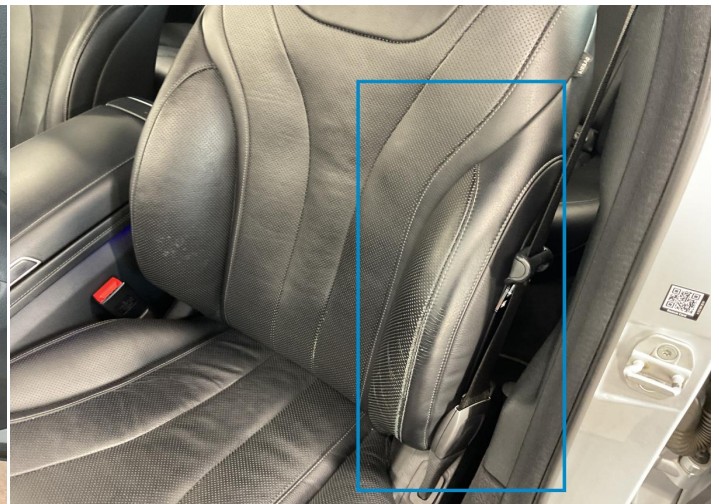
1. Dashboard / Front  
Interior / Warning Light ON -



2. Center Console  
Interior / Burn -



3. Panel Filling / Front Left  
Interior / Scratched -



4. Seat / Front Left  
Interior / Scratched -



5. Panel Filling / Back Left  
Interior / Broken -



6. Rim / Front Right  
Out of Bodywork / Scratch -





7. Fender / Front Right  
Bodywork / Poor Previous Repair -



8. Hood  
Paint / Chipping -



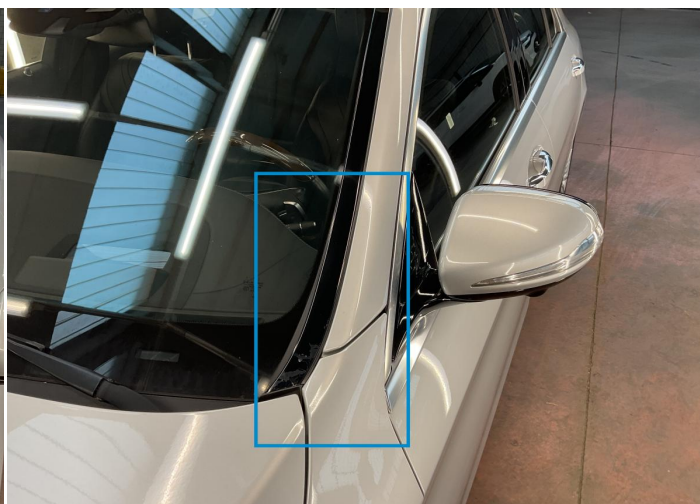
9. Fender / Front Left  
Bodywork / Dent -



10. Rim / Front Left  
Out of Bodywork / Scratch -

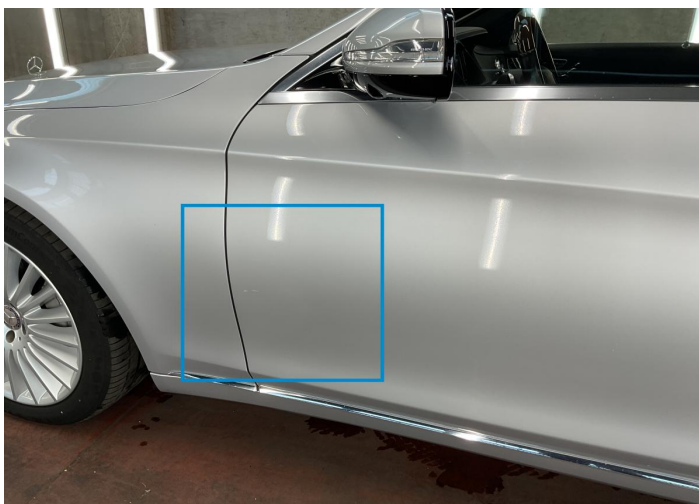


11. Windshield / Front  
Glass Break / Impact -



12. Pillar / Front Left  
Bodywork / Poor Previous Repair -





13. Door / Front Left  
Paint / Scratch / Line -



14. Rim / Back Left  
Out of Bodywork / Scratch -



15. Rocker Panel / Center Left  
Paint / Scratch / Line -



16. Bumper / Back  
Paint / Scratch / Line -

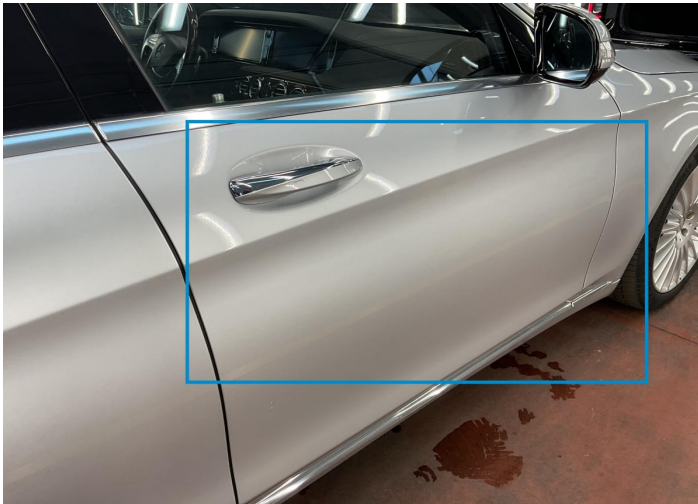


17. Fender / Back Right  
Bodywork / Poor Previous Repair -

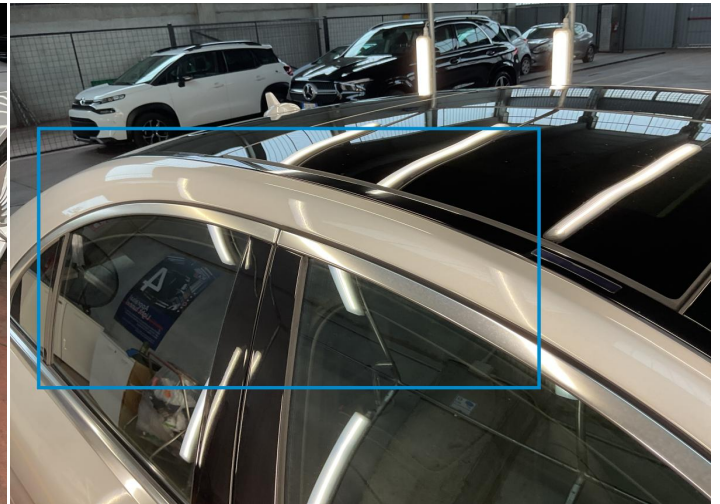


18. Door / Back Right  
Bodywork / Dent -

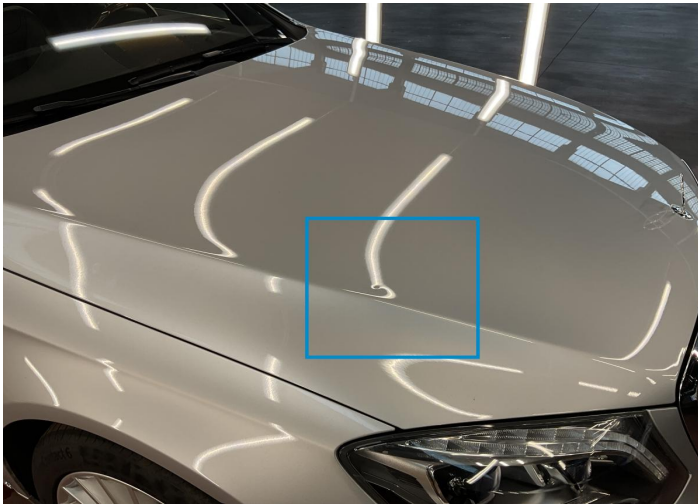




19. Door / Front Right  
Bodywork / Poor Previous Repair -



20. Pillar / Front Right  
Bodywork / Poor Previous Repair -



21. Hood  
Bodywork / Dent -



22. Tailgate  
Bodywork / Poor Previous Repair -



23.  
Bodywork / Poor Previous Repair -



## Mechanical Condition

| Engine              |   |                     |   |
|---------------------|---|---------------------|---|
| Vehicle Start - up  | ✓ | Engine Starts       | ✓ |
| Engine Leak Visible | ✓ |                     |   |
| Clutch              |   |                     |   |
| Clutch Functioning  | ✓ |                     |   |
| Equipments Test     |   |                     |   |
| Other Equipments    | ✓ | AC / Heating System | ✓ |
| Levels              |   |                     |   |
| Brakes Fluid        | ✓ | Coolant Fluid       | ✓ |

## Test Drive Inspection

| Other Checks  |   |                    |                     |
|---|---|--------------------|---------------------|
| Brakes  | ✓ | Steering           | ✓                   |
| Suspension  | ✓ |                    |                     |
| Gearbox   |   |                    |                     |
| Manual Gearbox  | ✓ |                    |                     |
| General   |   |                    |                     |
| Test Driven Status  | ✓ | Test Drive Comment | SPIA MOTORE ACCESA. |
| Equipments Test   |   |                    |                     |
| Steering   Noise / Anomaly  | ✓ |                    |                     |
| Engine  |   |                    |                     |
| Power Loss  | ✓ | Fume Quantity      | ✓                   |
| Engine Noise  | ! |                    |                     |
| ✓ No troubles detected, good condition or correct tests, according to vehicle age and mileage |   |                    |                     |
| ! Damages or malfunction detected that requires repairs by the buyer                          |   |                    |                     |
| NA Not applicable   |   |                    |                     |
| ☐ Not tested  |   |                    |                     |