



MERCEDES Classe E - S213 SW Diesel
E SW 200 d Sport auto

VIN NO WDD2132131A455312
Registration Number GP415EK



MOT Date	Number of Owners	Number of Keys	Odometer Reading
2024-11-20	-	-	163484 km
Last Service	Last Service Mileage	First Registration Date	Country First Registered
-	-	2019-06-01	Italy

Inspection Report Summary

Customer	BCA Lodi	Report Number	P20251009091403
Inspection Date / Place	2025-10-09 / BCA Lodi	Cosmetic Grade	3

Vehicle Summary

Vehicle Condition	Runner	VAT Type	Qualified
Fuel Type	Diesel	Gearbox Type	Sequential
Colour	Blue	Engine Size (cc)	1950
Engine Size	2.0	No of Doors	5
Body Type	Stationwagon / Estate	Drive Train	Rear
Seat Colour	Black	No of Seats	5
Seat Covering Name		Seat Covering	Cloth/Leather
Charging Cables		NEDC CO2 Rating (q/km)	129

Vehicle History & Documents

Service Book Available	-	Next Service Mileage	km
Previous Usage	Normal Use	Imported	Yes
Manufacturer Warrenty			







Equipment

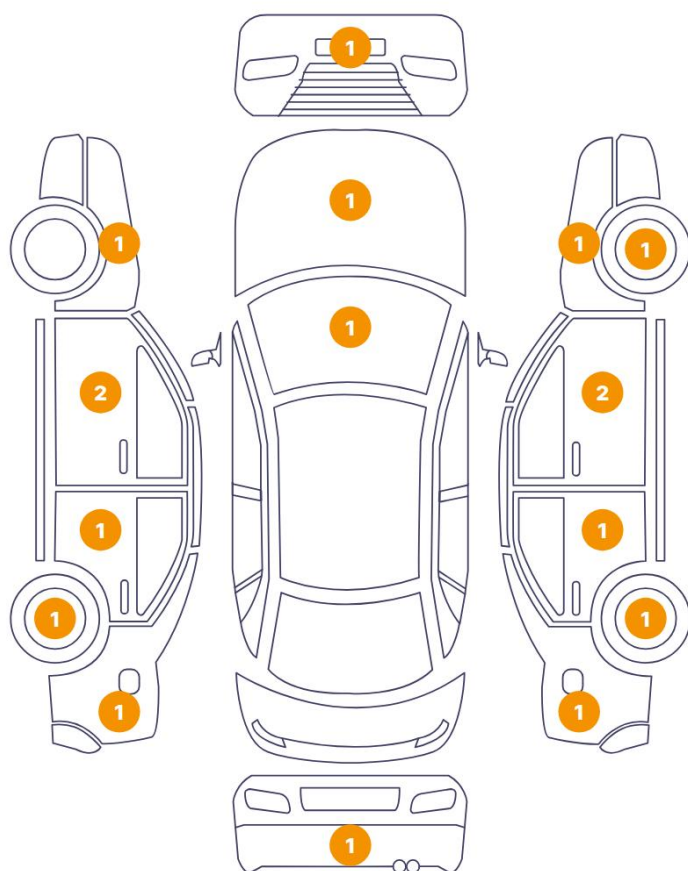
Central locking	Rain sensitive windscreen wipers	LED Headlamps	Digital Radio
Front parking sensors	Volante multifuncion	Remote adjusting wing mirrors	Trip Computer
Stability control	Power assisted steering	Rear parking sensors	Alloys wheels
Electrically folding wing mirrors	Satellite navigation	Parcel Shef	Remote central locking
Tyre Mobility Kit			

Wheels & Tyres

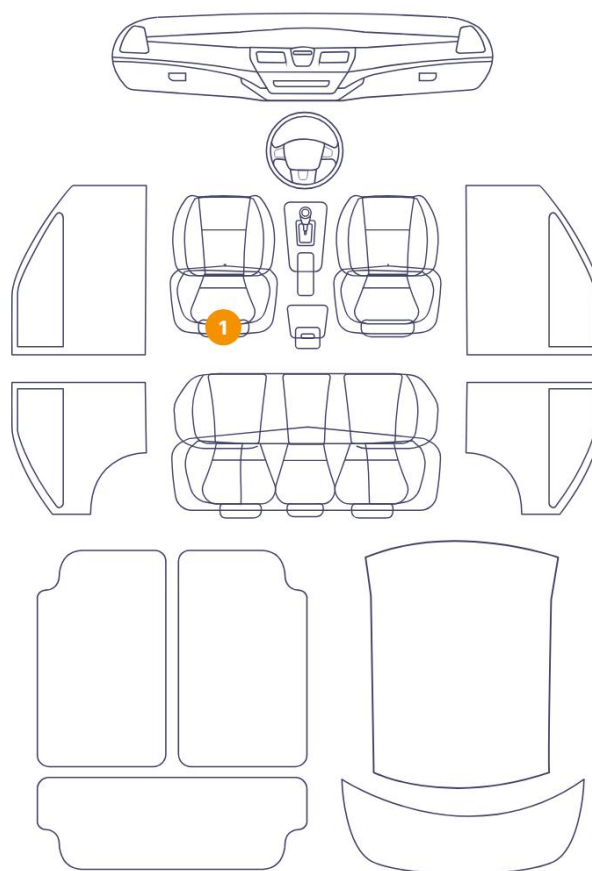
Mounted Tires

Tyre / Wheel Type	Summer	
	MICHELIN MICHELIN-PRIMACY 4	225/55//R17 - 101W / 3 mm
	MICHELIN MICHELIN-PRIMACY 4	225/55//R17 - 101W / 3 mm
	MICHELIN MICHELIN-PRIMACY 4	225/55//R17 - 101W / 3 mm
	MICHELIN MICHELIN-PRIMACY 4	225/55//R17 - 101W / 3 mm

17 Danni



1 Danni

6/11 - Report Number P20251009091403

13	Seat / Front Left	Interior / Worn - out
14	Rim / Front Right	Out of Bodywork / Scratch
15	Fender / Back Left	Bodywork / Poor Previous Repair
16	Rim / Back Left	Out of Bodywork / Scratch
17	Rim / Back Right	Out of Bodywork / Scratch
18	Fender / Front Left	Paint / Scratch / Line



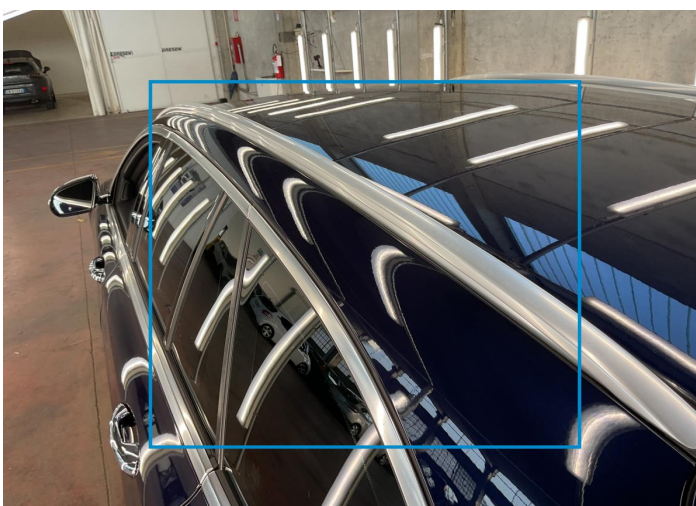
1. Windshield / Front
Glass Break / Impact -



2. Hood
Paint / Chipping -



3. Bumper / Back
Paint / Scratch / Line -



4. Pillar / Front Left
Bodywork / Poor Previous Repair -



5. Bumper / Front
Paint / Chipping -



6. Fender / Back Right
Bodywork / Poor Previous Repair -



7. Pillar / Front Right
Bodywork / Poor Previous Repair -



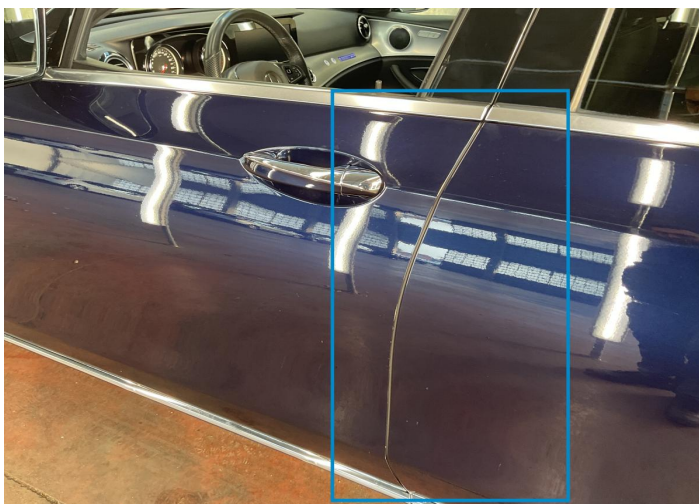
8. Door / Back Left
Bodywork / Dent -



9. Door / Front Right
Bodywork / Poor Previous Repair -



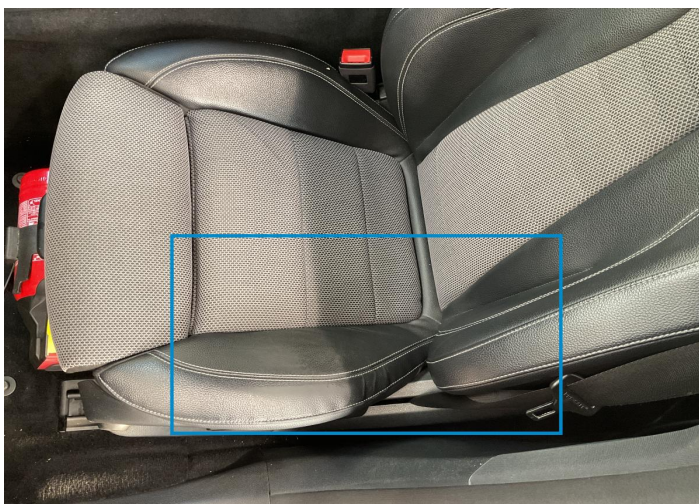
10. Door / Back Right
Bodywork / Poor Previous Repair -



11. Door / Front Left
Paint / Scratch / Line -



12. Fender / Front Right
Bodywork / Poor Previous Repair -



13. Seat / Front Left
Interior / Worn - out -



14. Rim / Front Right
Out of Bodywork / Scratch -



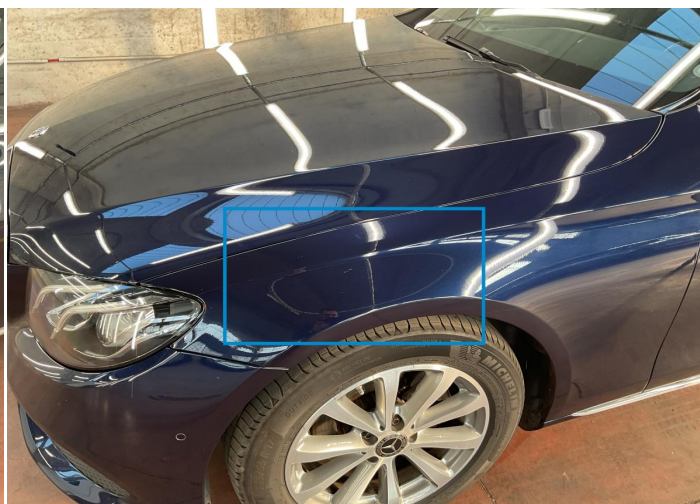
15. Fender / Back Left
Bodywork / Poor Previous Repair -



16. Rim / Back Left
Out of Bodywork / Scratch -



17. Rim / Back Right
Out of Bodywork / Scratch -



18. Fender / Front Left
Paint / Scratch / Line -

Mechanical Condition

Engine			
Vehicle Start - up	✓	Engine Starts	✓
Engine Leak Visible	✓		
Clutch			
Clutch Functioning	✓		
Equipments Test			
Other Equipments	✓	AC / Heating System	✓
Levels			
Brakes Fluid	✓	Coolant Fluid	✓

Test Drive Inspection

General			
Test Driven Status	✓		
Other Checks			
Steering	✓	Brakes	✓
Suspension	!		
Equipments Test			
Steering Noise / Anomaly	✓		
Engine			
Power Loss	✓	Fume Quantity	✓
Engine Noise	!		
Gearbox			
Manual Gearbox	✓		

✓ No troubles detected, good condition or correct tests, according to vehicle age and mileage

! Damages or malfunction detected that requires repairs by the buyer

NA Not applicable

☐ Not tested