



MERCEDES-BENZ C-Klasse

C 220 d 4Matic T 7G-TRONIC

VIN NO WDD2052051F344176

Registration Number 051F344176



MOT Date

2025-05-01

Last Service



Number of Owners

2

Last Service Mileage



Number of Keys

2

First Registration Date

2016-03-08

Odometer Reading

146296 km

Country First Registered

Germany

Inspection Report Summary

Customer	BCA Online	Report Number	P20250922095245
Inspection Date / Place	2025-09-22 / BCA Oberndorf	Cosmetic Grade	2

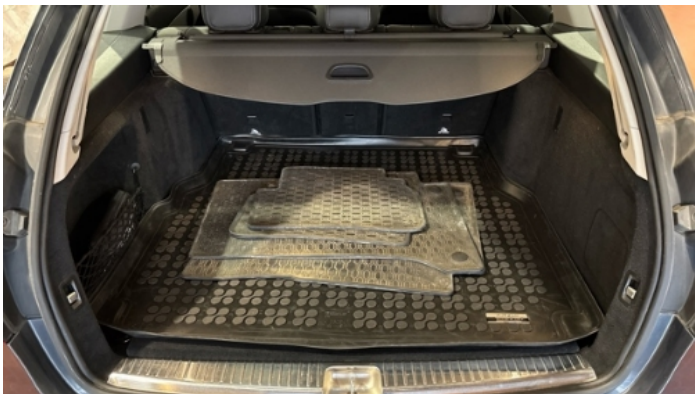
Vehicle Summary

Vehicle Condition	Runner	VAT Type	Margin
Fuel Type	Diesel	Road Worthy	Yes
Colour	Grey	Engine Size (cc)	2143
Engine Size	2.1	No of Doors	5
Body Type	Stationwagon / Estate	Drive Train	All-Wheel-Drive permanent
Seat Colour		No of Seats	5
Seat Covering Name	Schwarz/grau	Seat Covering	Cloth/Synthetic Leather
Charging Cables		NEDC CO2 Rating (q/km)	129
Gearbox Type	Automatic		

Vehicle History & Documents

Service Book Available	Missing	Next Service Mileage	km
Previous Usage		Imported	No
Manufacturer Warrenty			







Equipment

USB Socket	Alloys wheels	Anti-lock braking	Bluetooth telephone interface
Diesel particulate filter	Remote adjusting wing mirrors	Roof rails	Split folding rear seats
Sunroof	Central locking	Electrictailgate	Laneassist
LED Headlamps	Rear parking sensors	Airbag Status	Ambientlighting
Blindspotassist	Cruise control	Front parking sensors	Remote central locking
Satellite navigation	Stability control	CD Player	Electrically folding wing mirrors
Emergencybrakeassist	Leather steering wheel	Radio	

Equipment Details

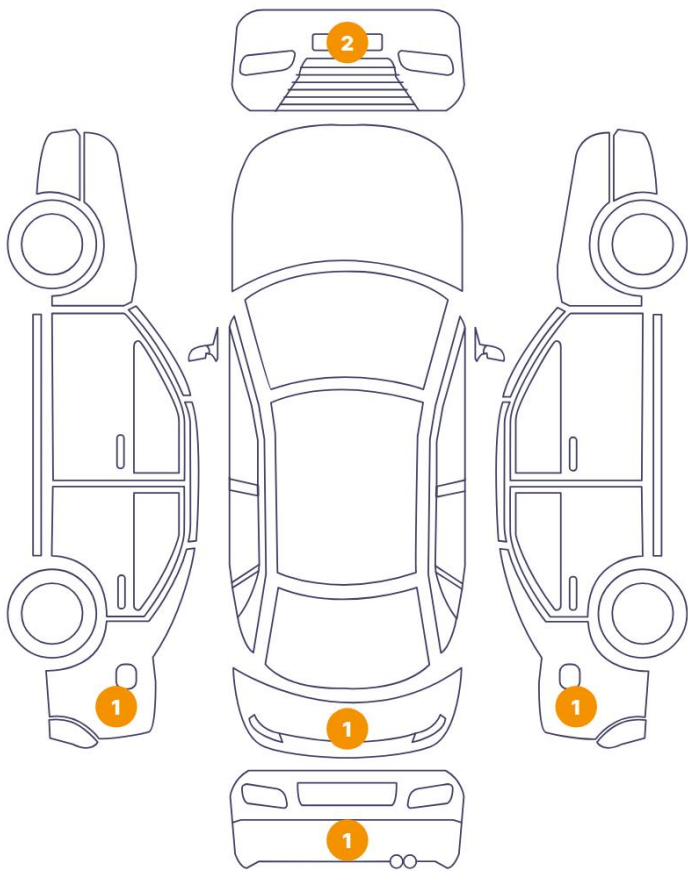
Air Conditioning	Dual Zone Climate Control	Alloy Wheel Size	17
Seat Heating	Front	Sunroof Type	Opening Panoramic

Wheels & Tyres

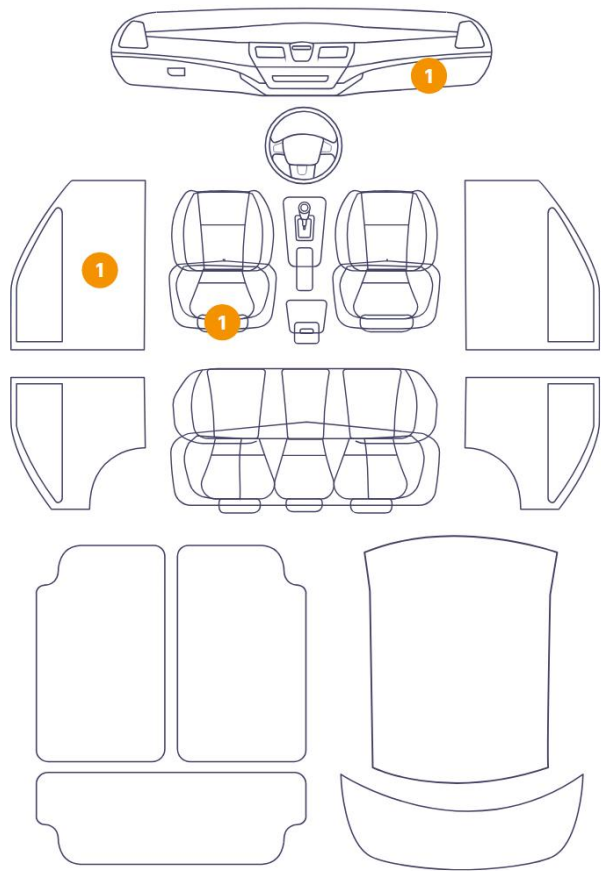
Left Rear Tyre Depth	6	Right Front Tyre Depth	6
Left Front Tyre Depth	6	Right Rear Tyre Depth	6

Cosmetic Damage

6 Schäden



3 Schäden



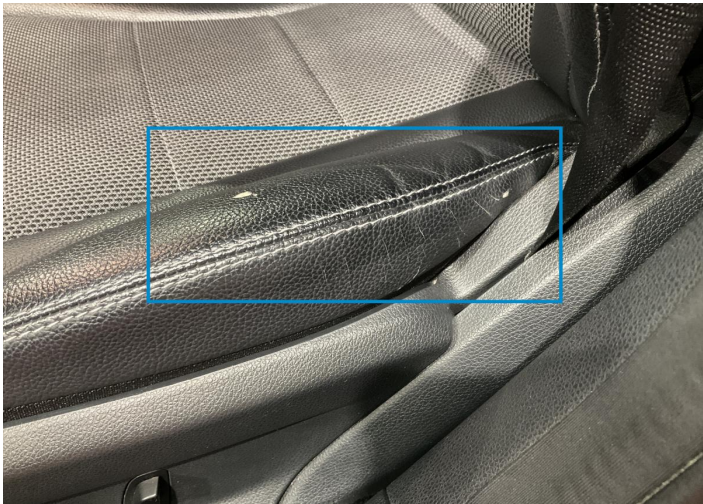
Component		Damage	Comments
1	Bumper / Front	Paint / Scratch / Scuff	
2	Bumper / Front	Paint / Scratch / Line	
3	Seat Cushion / Front Left	Interior / Ripped	
4	Center Console	Interior / Scratched	
5	Panel Filling / Front Left	Interior / Scratched	
6	Fender / Back Left	Paint / Scratch / Line	
7	Bumper / Back	Paint / Scratch / Line	
8	Tailgate	Paint / Scratch / Scuff	
9	Fender / Back Right	Bodywork / Dent / Dent	



1. Bumper / Front
Paint / Scratch / Scuff -



2. Bumper / Front
Paint / Scratch / Line -



3. Seat Cushion / Front Left
Interior / Ripped -



4. Center Console
Interior / Scratched -



5. Panel Filling / Front Left
Interior / Scratched -



6. Fender / Back Left
Paint / Scratch / Line -



7. Bumper / Back
Paint / Scratch / Line -



8. Tailgate
Paint / Scratch / Scuff -



9. Fender / Back Right
Bodywork / Dent / Dent -

Mechanical Condition

Equipments Test

Central Locking	✓	Electric Windows	✓
Navigation System	✓	AC / Heating System	✓
Main & Spare Keys Functioning	✓	Parking Sensors / Cameras Functioning	✓
Other Equipments	✓		

Control Lights

ABS Warning Light	✓	ESP Fault/Traction Control Malfunction Light	✓
Diesel Particulate Filter Light	✓	Airbag Warning Light	✓
Oil Pressure Warning Light	✓	Brake Warning Light	✓
Power Steering Warning Light	✓	Alternator / Battery	✓
All - wheel Drive	✓	No Dashboard Lights	✓
Display Defect	✓	Service Light	✓
Tire Pressure Monitoring System	✓		

Engine

Engine Status / EML	✓	Engine Leak Visible	✓
Engine Starts	✓		

Gearbox

Gear Box	✓
----------	---

Levels

Brakes Fluid	✓	Coolant Fluid	✓
--------------	---	---------------	---

Test Drive Inspection

Steering Wheel

Steering | Noise / Anomaly

Engine

Engine Noise The Gears Scratch / Skip / Abnormal Operation

Fume Quantity Power Loss

Brake

Brake System Anomaly

General

Test Driven Status Not Performed

No troubles detected, good condition or correct tests, according to vehicle age and mileage

Damages or malfunction detected that requires repairs by the buyer

Not applicable

Not tested

Disclaimer

Please also note the "UserGuide condition report", which shows the scope of the vehicle description. [User Guide](#)