



MERCEDES-BENZ C-Klasse

C 220 (BlueTEC) d T

VIN NO WDD2052041F416168
Registration Number 041F416168



MOT Date

2027-08-01

Last Service

2023-07-19

Number of Owners

2

Last Service Mileage

117613

Number of Keys

3

First Registration Date

2016-07-14

Odometer Reading

158417 km

Country First Registered

Germany

Inspection Report Summary

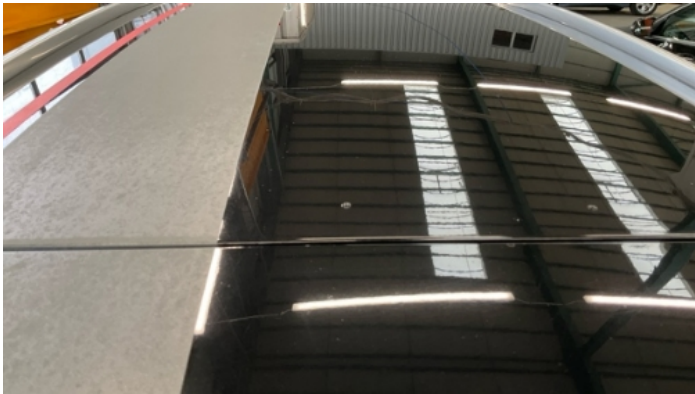
Customer	BCA Online	Report Number	P20250929104545
Inspection Date / Place	2025-09-29 / ARS Altmann AG Riedstadt	Cosmetic Grade	2

Vehicle Summary

Vehicle Condition	Runner	VAT Type	Margin
Fuel Type	Diesel	Road Worthy	Yes
Colour	Black	Engine Size (cc)	2143
Engine Size	2.1	No of Doors	5
Body Type	Stationwagon / Estate	Drive Train	Rear
Seat Colour		No of Seats	5
Seat Covering Name	Schwarz	Seat Covering	Synthetic Leather
Charging Cables		NEDC CO2 Rating (q/km)	108
Gearbox Type	Manual		

Vehicle History & Documents

Service Book Available	Computer Print Out Available	Next Service Mileage	km
Previous Usage	Imported		No
Manufacturer Warrenty			







Equipment

Tinted Glass	USB Socket	Alloys wheels	Bluetooth telephone interface
Diesel particulate filter	Heated wing mirrors	Remote central locking	Satellite navigation
Stability control	Central locking	Leather steering wheel	Rain sensitive windscreen wipers
Trip Computer	Airbag Status	Anti-lock braking	Cruise control
Front parking sensors	Remote adjusting wing mirrors	Roof rails	Split folding rear seats
CD Player	Electrically folding wing mirrors	Radio	Rear parking sensors

Equipment Details

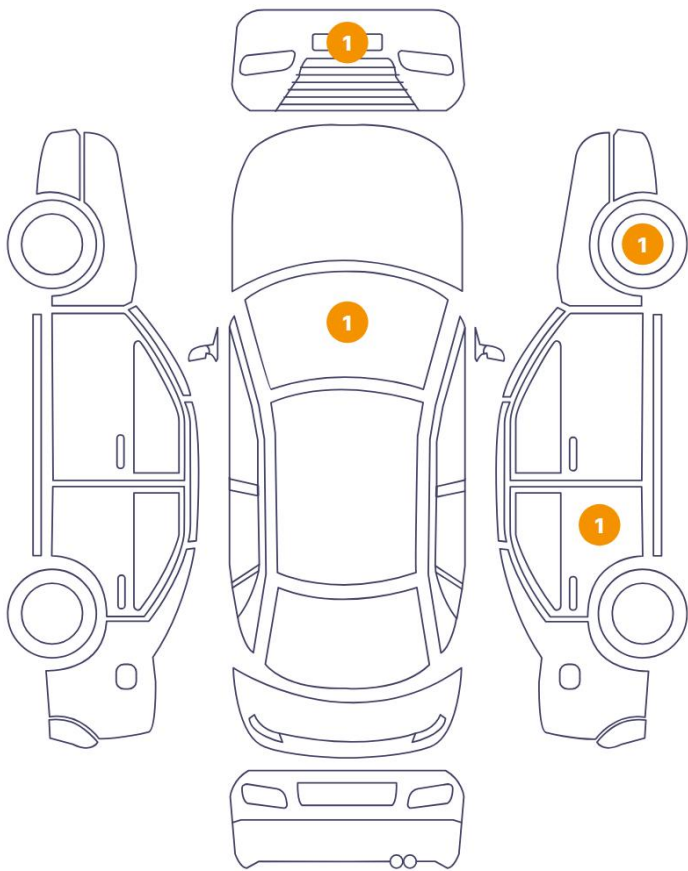
Air Conditioning	Dual Zone Climate Control	Alloy Wheel Size	17
Satellite Navigation	SD	Seat Heating	Front

Wheels & Tyres

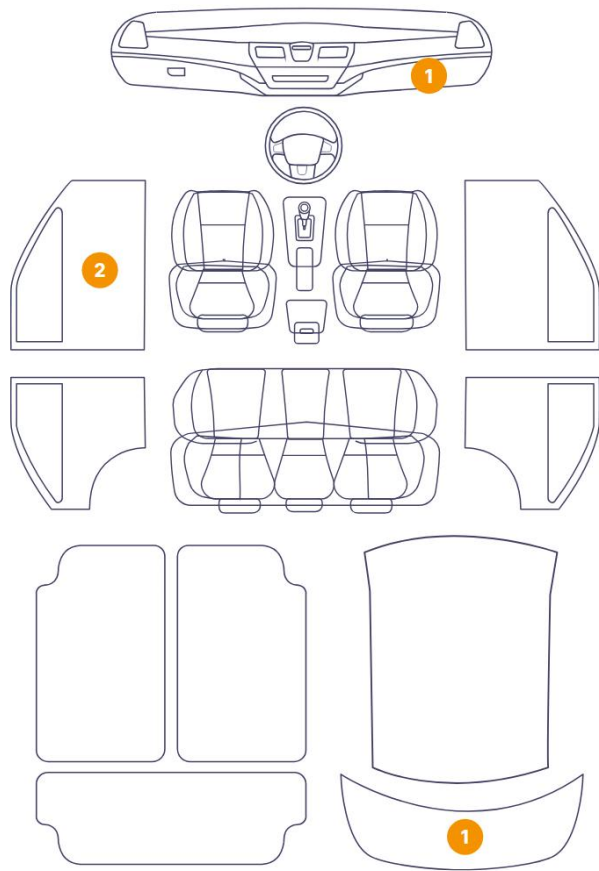
Right Front Tyre Depth	4	Left Front Tyre Depth	5
Right Rear Tyre Depth	4	Left Rear Tyre Depth	4

Cosmetic Damage

4 Schäden



4 Schäden



Component	Damage	Comments
1 Bumper / Front	Paint / Scratch / Scuff	
2 Panel Filling / Front Left	Interior / Scratched	
3 Door Step / Front Left	Interior / Distorted	
4 Door / Back Right	Paint / Scratch / Scuff	
5 Rim / Front Right	Out of Bodywork / Scratch	
6 Windshield / Front	Glass Break / Impact	
7 Dashboard / Front	Interior / Holed	
8 Trunk Upholstery / Back	Interior / Scratched	



1. Bumper / Front
Paint / Scratch / Scuff -



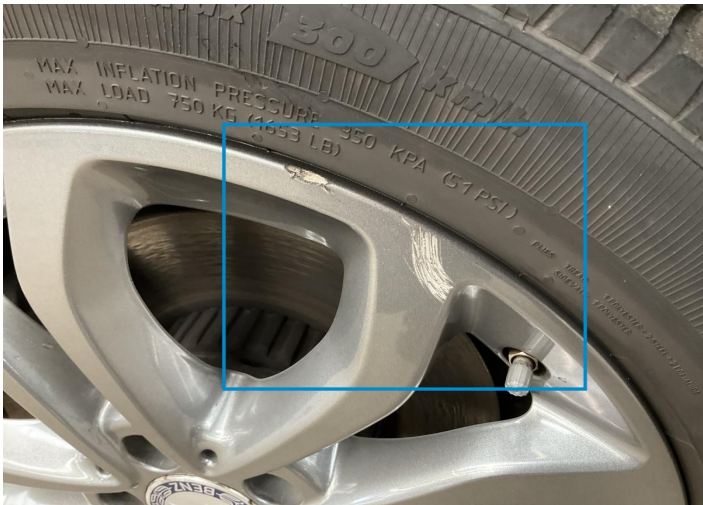
2. Panel Filling / Front Left
Interior / Scratched -



3. Door Step / Front Left
Interior / Distorted -



4. Door / Back Right
Paint / Scratch / Scuff -



5. Rim / Front Right
Out of Bodywork / Scratch -



6. Windshield / Front
Glass Break / Impact -



7. Dashboard / Front
Interior / Holed -



8. Trunk Upholstery / Back
Interior / Scratched -

Mechanical Condition

Control Lights

ABS Warning Light	✓	ESP Fault/Traction Control Malfunction Light	✓
Diesel Particulate Filter Light	✓	Airbag Warning Light	✓
Oil Pressure Warning Light	✓	Brake Warning Light	✓
Power Steering Warning Light	✓	Alternator / Battery	✓
No Dashboard Lights	✓	Display Defect	✓
Service Light	✓	Tire Pressure Monitoring System	✓

Engine

Engine Status / EML	✓	Engine Leak Visible	✓
Engine Starts	✓		

Gearbox

Gear Box	✓
----------	---

Equipments Test

Central Locking	✓	Main & Spare Keys Functioning	✓
Electric Windows	✓	Navigation System	✓
Audio Equipment	✓	AC / Heating System	✓

Levels

Brakes Fluid	✓	Coolant Fluid	✓
--------------	---	---------------	---

Test Drive Inspection

Engine			
Engine Noise	✓	The Gears Scratch / Skip / Abnormal Operation	✓
Fume Quantity	✓	Power Loss	✓
Brake			
Brake System Anomaly	✓		
Steering Wheel			
Steering Noise / Anomaly	✓		
Clutch			
Clutch Functioning	✓		
General			
Test Driven Status	✓		

- ✓ *No troubles detected, good condition or correct tests, according to vehicle age and mileage*
- ! *Damages or malfunction detected that requires repairs by the buyer*
- NA *Not applicable*
- ☐ *Not tested*

Disclaimer

Please also note the "UserGuide condition report", which shows the scope of the vehicle description.

[User Guide](#)