



MERCEDES-BENZ C-Klasse

C 220 (BlueTEC) d T 7G-TRONIC

VIN NO WDD2052041F406184
Registration Number 041F406184



MOT Date

2025-10-01

Last Service



Number of Owners

2

Last Service Mileage



Number of Keys

5

First Registration Date

2016-09-29

Odometer Reading

141664 km

Country First Registered

Germany

Inspection Report Summary

Customer	BCA Online	Report Number	P20250804145012
Inspection Date / Place	2025-08-04 / ARS Altmann AG Riedstadt	Cosmetic Grade	4

Vehicle Summary

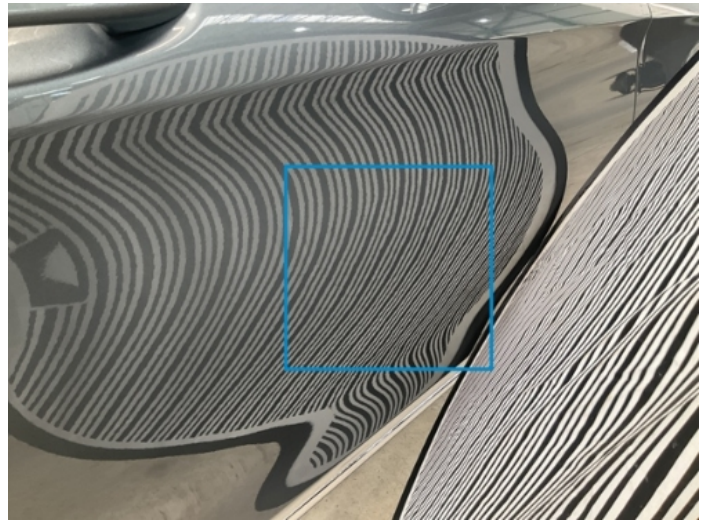
Vehicle Condition	Runner	VAT Type	Qualifying
Fuel Type	Diesel	Road Worthy	Yes
Colour	Grey	Engine Size (cc)	2143
Engine Size	2.1	No of Doors	5
Body Type	Stationwagon / Estate	Drive Train	Rear
Seat Colour		No of Seats	5
Seat Covering Name		Seat Covering	Cloth/Synthetic Leather
Charging Cables		NEDC CO2 Rating (q/km)	108
Gearbox Type	Automatic		

Vehicle History & Documents

Service Book Available	Missing	Next Service Mileage	km
Previous Usage		Imported	No
Manufacturer Warrenty			







Equipment

Tinted Glass	Trip Computer	Airbag Status	Anti-lock braking
Cruise control	Front parking sensors	Remote adjusting wing mirrors	Roof rails
Stability control	Electrically folding wing mirrors	LED Headlamps	Rear parking sensors
Tow ball	USB Socket	Alloys wheels	Bluetooth telephone interface
Diesel particulate filter	Heated wing mirrors	Remote central locking	Satellite navigation
CD Player	Leather steering wheel	Radio	

Equipment Details

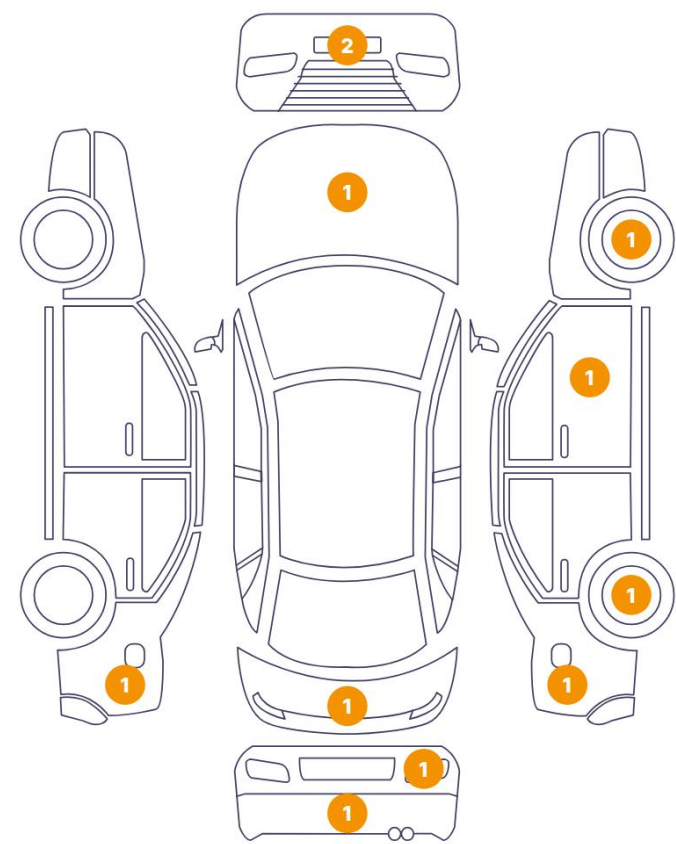
Tow Ball Type	Electronic	Air Conditioning	Dual Zone Climate Control
Alloy Wheel Size	17	Extra Wheel / Tyre Set	Winter Tyres - Alloy
Seat Heating	Front		

Wheels & Tyres

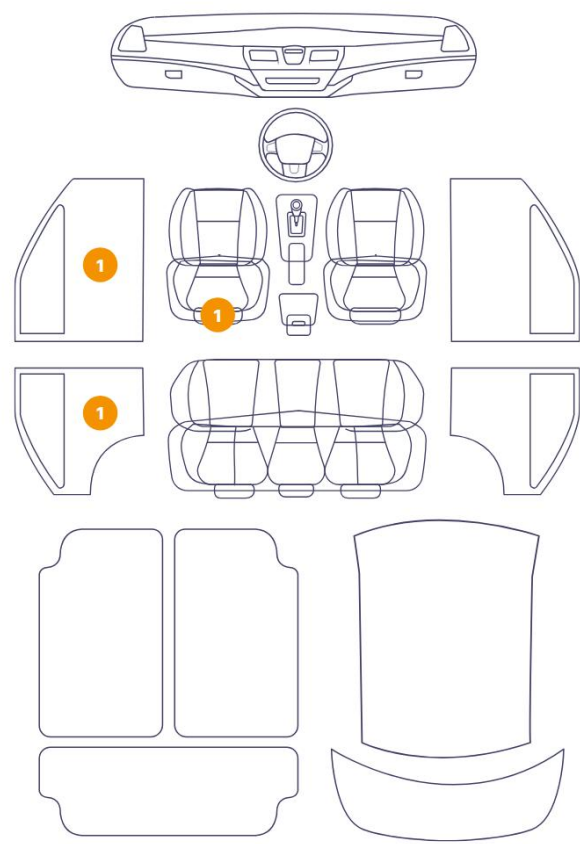
Right Front Tyre Depth	4	Left Front Tyre Depth	4
Right Rear Tyre Depth	4	Left Rear Tyre Depth	4
Extra Wheel - 1 Tyre Depth	7	Extra Wheel - 2 Tyre Depth	7
Extra Wheel - 4 Tyre Depth	6	Extra Wheel - 3 Tyre Depth	6

Cosmetic Damage

11 Schäden



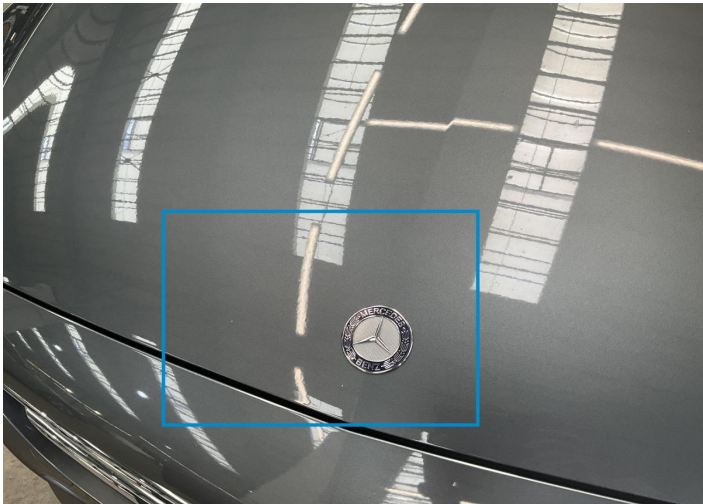
3 Schäden



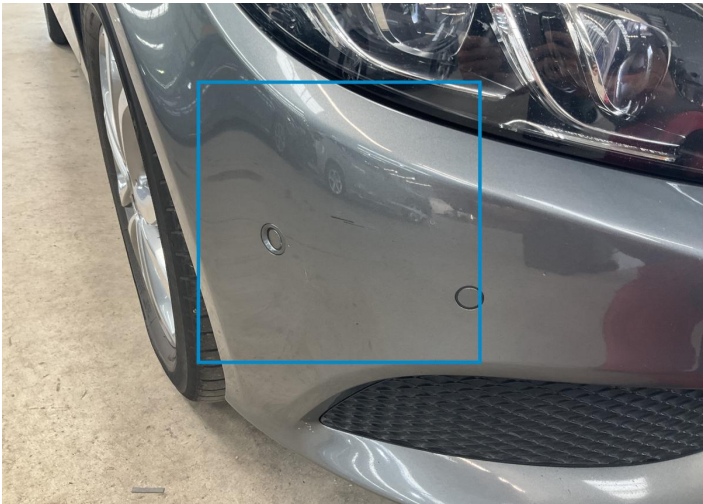
Component		Damage	Comments
1	Hood	Paint / Stone Chip	
2	Bumper / Front	Paint / Scratch / Scuff	
3	Bumper / Front	Paint / Scratch / Scuff	
4	Panel Filling / Front Left	Interior / Scratched	
5	Seat / Front Left	Interior / Scratched	
6	Panel Filling / Back Left	Interior / Scratched	
7	Bumper / Back	Bodywork / Dent / Dent	
8	Fender / Back Left	Bodywork / Dent / Dent	
9	Tailgate	Bodywork / Dent / Dent	
10	Fender / Back Right	Bodywork / Dent / Dent	
11	Rim / Back Right	Out of Bodywork / Scratch	
12	Back Light / Right	Bodywork / Breakage / Hole	
13	Rim / Front Right	Out of Bodywork / Scratch	

14 Door / Front Right

Bodywork / Dent / Dent



1. Hood
Paint / Stone Chip -



2. Bumper / Front
Paint / Scratch / Scuff -



3. Bumper / Front
Paint / Scratch / Scuff -



4. Panel Filling / Front Left
Interior / Scratched -



5. Seat / Front Left
Interior / Scratched -



6. Panel Filling / Back Left
Interior / Scratched -



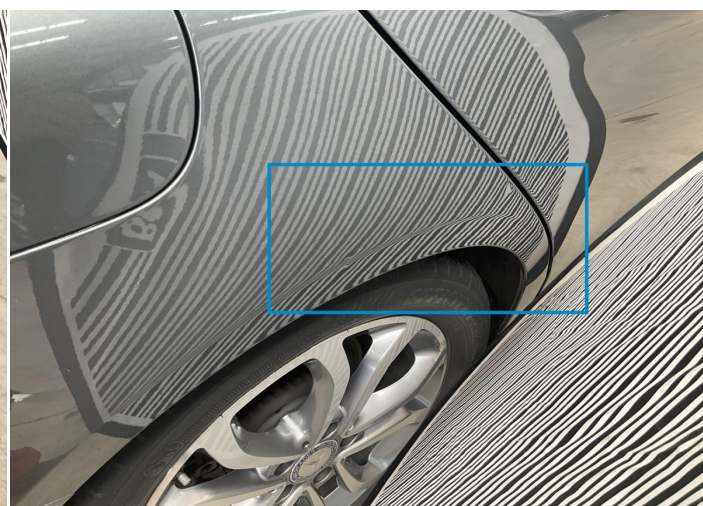
7. Bumper / Back
Bodywork / Dent / Dent -



8. Fender / Back Left
Bodywork / Dent / Dent -



9. Tailgate
Bodywork / Dent / Dent -



10. Fender / Back Right
Bodywork / Dent / Dent -



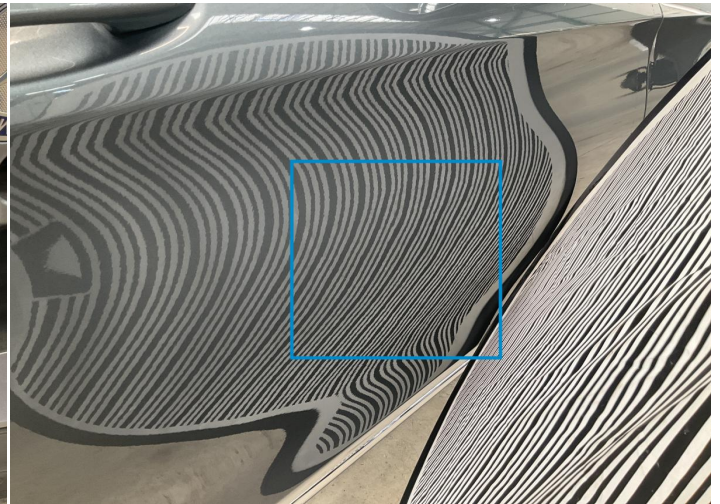
11. Rim / Back Right
Out of Bodywork / Scratch -



12. Back Light / Right
Bodywork / Breakage / Hole -



13. Rim / Front Right
Out of Bodywork / Scratch -



14. Door / Front Right
Bodywork / Dent / Dent -

Mechanical Condition

Control Lights

Display Defect	✓	Service Light	!
ABS Warning Light	✓	ESP Fault/Traction Control Malfunction Light	✓
Diesel Particulate Filter Light	✓	Airbag Warning Light	✓
Oil Pressure Warning Light	✓	Brake Warning Light	✓
Power Steering Warning Light	✓	Alternator / Battery	✓
No Dashboard Lights	✓	Tire Pressure Monitoring System	✓

Equipments Test

Other Equipments	✓	Central Locking	✓
Main & Spare Keys Functioning	✓	Electric Windows	✓
Navigation System	✓	Audio Equipment	✓
Parking Sensors / Cameras Functioning	✓	AC / Heating System	✓

Engine

Engine Starts	✓	Engine Status / EML	✓
Engine Leak Visible	✓		

Gearbox

Gear Box	✓
----------	---

Levels

Brakes Fluid	✓	Coolant Fluid	✓
--------------	---	---------------	---

Test Drive Inspection

Steering Wheel			
Steering Noise / Anomaly		✓	
Engine			
Engine Noise	✓	The Gears Scratch / Skip / Abnormal Operation	✓
Fume Quantity	✓	Power Loss	✓
Brake			
Brake System Anomaly		✓	
General			
Test Driven Status		✓	
✓ <i>No troubles detected, good condition or correct tests, according to vehicle age and mileage</i>			
! <i>Damages or malfunction detected that requires repairs by the buyer</i>			
NA <i>Not applicable</i>			
= <i>Not tested</i>			

Disclaimer

Please also note the "UserGuide condition report", which shows the scope of the vehicle description.

[User Guide](#)