



MERCEDES-BENZ C-Klasse

C 250 9G-TRONIC

VIN NO WDD2050451R396442
Registration Number 451R396442



MOT Date	Number of Owners	Number of Keys	Odometer Reading
-	2	1	127222 km
Last Service	Last Service Mileage	First Registration Date	Country First Registered
-	-	2018-06-21	-

Inspection Report Summary

Customer	BCA Online	Report Number	P20250916084208
Inspection Date / Place	2025-09-16 / BCA Berlin	Cosmetic Grade	5

Vehicle Summary

Vehicle Condition	Runner	VAT Type	Margin
Fuel Type	Petrol	Road Worthy	Unknown
Colour	White	Engine Size (cc)	1991
Engine Size	2.0	No of Doors	4
Body Type	Sedan	Drive Train	Rear
Seat Colour		No of Seats	5
Seat Covering Name	schwarz	Seat Covering	Leather
Charging Cables		NEDC CO2 Rating (q/km)	128
Gearbox Type	Automatic		

Vehicle History & Documents

Service Book Available	Missing	Next Service Mileage	km
Previous Usage		Imported	No
Manufacturer Warrenty			







Equipment

Tinted Glass	Alloys wheels	Anti-lock braking	Front parking sensors
Remote central locking	Satellite navigation	Sunroof	Electrically folding wing mirrors
Radio	Airbag Status	Ambientlighting	Cruise control
Remote adjusting wing mirrors	Reversing Camera	Stability control	CD Player
LED Headlamps	Rear parking sensors		

Equipment Details

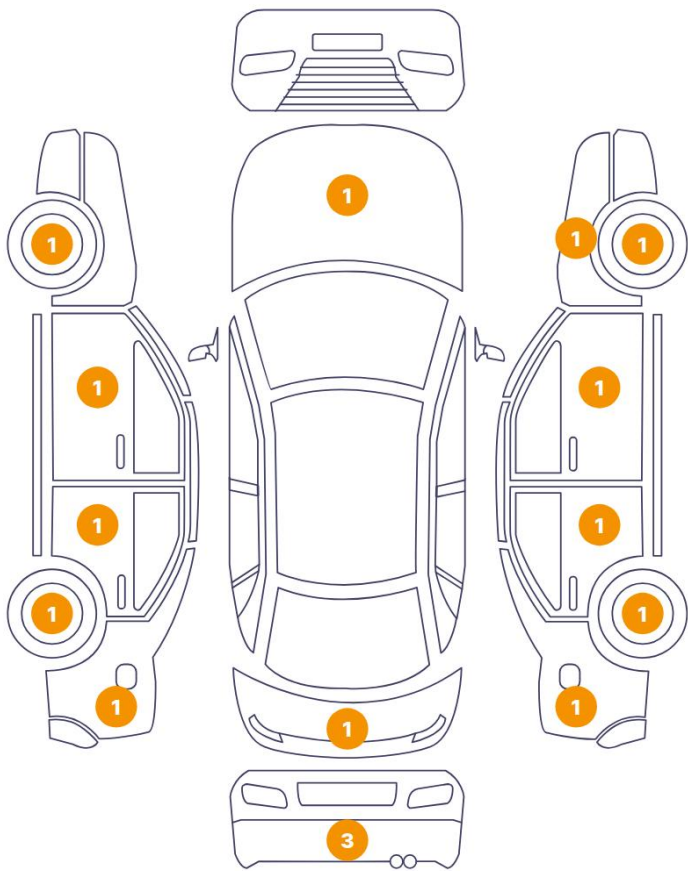
Air Conditioning	Dual Zone Climate Control	Alloy Wheel Size	18
Seat Heating	Front	Sunroof Type	Opening Panoramic

Wheels & Tyres

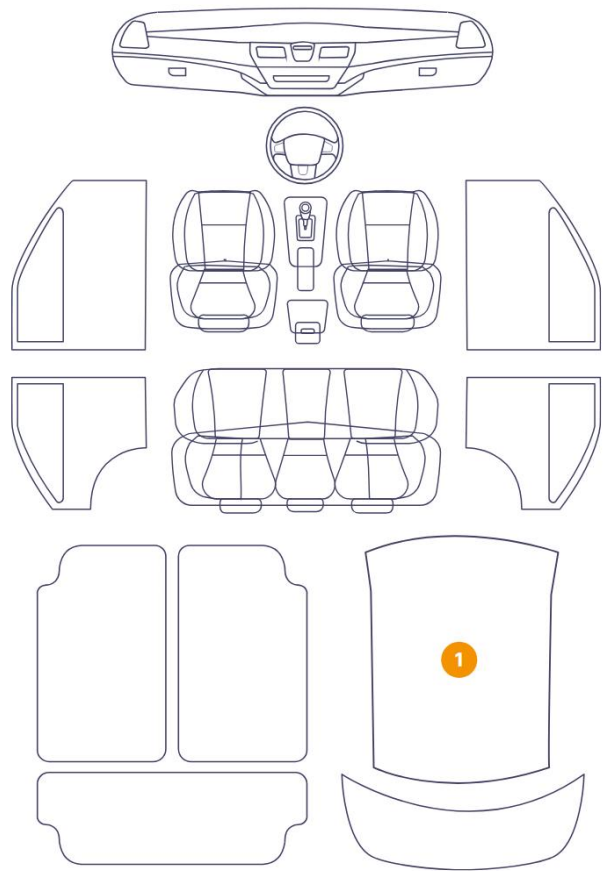
Right Front Tyre Depth	4	Left Front Tyre Depth	4
Right Rear Tyre Depth	4	Left Rear Tyre Depth	4

Cosmetic Damage

16 Schäden



1 Schäden



Component		Damage	Comments
1	Rim / Front Left	Out of Bodywork / Scratch	
2	Rim / Front Right	Out of Bodywork / Scratch	
3	Rim / Back Left	Out of Bodywork / Scratch	
4	Bumper / Back	Paint / Scratch / Scuff	
5	Bumper / Back	Paint / Scratch / Scuff	
6	Tailgate	Bodywork / Dent / Dent	
7	Rim / Back Right	Out of Bodywork / Scratch	
8	Roof Upholstery	Interior / Ripped	
9	Side Panel / Back Left	Paint / Poor Previous Repair	
10	Door / Back Left	Paint / Poor Previous Repair	
11	Door / Front Left	Paint / Poor Previous Repair	
12	Hood	Paint / Poor Previous Repair	

13	Fender / Front Right	Paint / Poor Previous Repair
14	Door / Front Right	Paint / Poor Previous Repair
15	Door / Back Right	Paint / Poor Previous Repair
16	Side Panel / Back Right	Paint / Poor Previous Repair
17	Bumper / Back	Bodywork / Breakage / Crack



1. Rim / Front Left
Out of Bodywork / Scratch -



2. Rim / Front Right
Out of Bodywork / Scratch -



3. Rim / Back Left
Out of Bodywork / Scratch -



4. Bumper / Back
Paint / Scratch / Scuff -



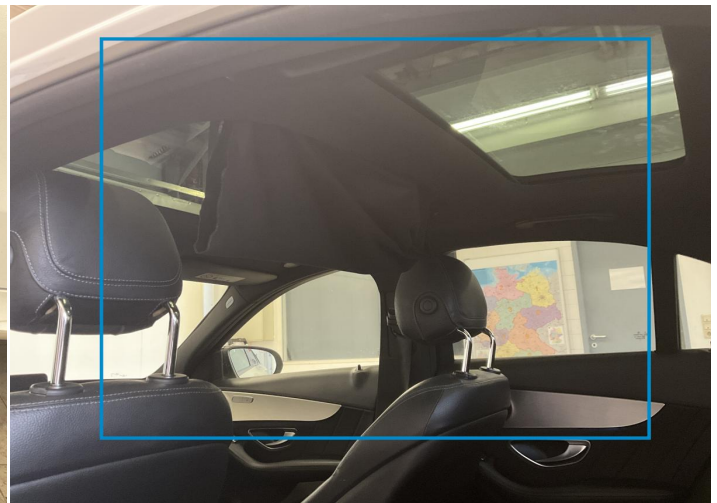
5. Bumper / Back
Paint / Scratch / Scuff -



6. Tailgate
Bodywork / Dent / Dent -



7. Rim / Back Right
Out of Bodywork / Scratch -



8. Roof Upholstery
Interior / Ripped -



9. Side Panel / Back Left
Paint / Poor Previous Repair -



10. Door / Back Left
Paint / Poor Previous Repair -



11. Door / Front Left
Paint / Poor Previous Repair -



12. Hood
Paint / Poor Previous Repair -



13. Fender / Front Right
Paint / Poor Previous Repair -



14. Door / Front Right
Paint / Poor Previous Repair -



15. Door / Back Right
Paint / Poor Previous Repair -



16. Side Panel / Back Right
Paint / Poor Previous Repair -



17. Bumper / Back
Bodywork / Breakage / Crack -

Mechanical Condition

Control Lights

Display Defect	✓	ABS Warning Light	✓
ESP Fault/Traction Control Malfunction Light	✓	Airbag Warning Light	✓
Oil Pressure Warning Light	✓	Brake Warning Light	✓
Power Steering Warning Light	✓	Alternator / Battery	✓
No Dashboard Lights	⚠	Tire Pressure Monitoring System	⚠

Equipments Test

Main & Spare Keys Functioning	✓	Electric Windows	✓
Navigation System	✓	Audio Equipment	✓
Parking Sensors / Cameras Functioning	✓	AC / Heating System	✓
Other Equipments	✓		

Engine

Engine Status / EML	✓	Engine Leak Visible	✓
Engine Starts	✓		

Levels

Brakes Fluid	✓	Coolant Fluid	✓
--------------	---	---------------	---

Test Drive Inspection

Steering Wheel			
Steering Noise / Anomaly		✓	
Engine			
Engine Noise	✓	The Gears Scratch / Skip / Abnormal Operation	✓
Fume Quantity	✓	Power Loss	✓
Brake			
Brake System Anomaly		✓	
General			
Test Driven Status		✓	
✓ <i>No troubles detected, good condition or correct tests, according to vehicle age and mileage</i>			
! <i>Damages or malfunction detected that requires repairs by the buyer</i>			
NA <i>Not applicable</i>			
= <i>Not tested</i>			

Disclaimer

Please also note the "UserGuide condition report", which shows the scope of the vehicle description.

[User Guide](#)