



MERCEDES-BENZ C-Klasse
C 180 7G-TRONIC

VIN NO WDD2050401F221166
Registration Number 401F221166



MOT Date	Number of Owners	Number of Keys	Odometer Reading
2026-07-01	2	2	86016 km
Last Service	Last Service Mileage	First Registration Date	Country First Registered
2024-08-01	79432	2015-06-24	Germany

Inspection Report Summary

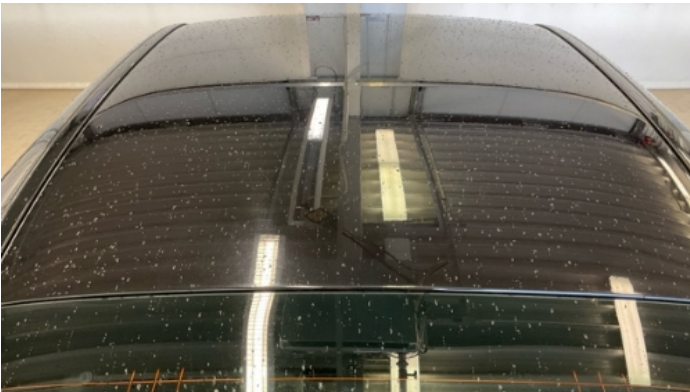
Customer	BCA Online	Report Number	P20250902121218
Inspection Date / Place	2025-09-02 / BCA Berlin	Cosmetic Grade	4

Vehicle Summary

Vehicle Condition	Runner	VAT Type	Margin
Fuel Type	Petrol	Road Worthy	Yes
Colour	Black	Engine Size (cc)	1595
Engine Size	1.6	No of Doors	4
Body Type	Sedan	Drive Train	Rear
Seat Colour		No of Seats	5
Seat Covering Name	ARTICO Norwich schwarz	Seat Covering	Cloth/Synthetic Leather
Charging Cables		NEDC CO2 Rating (q/km)	116
Gearbox Type	Automatic		

Vehicle History & Documents

Service Book Available	Present	Next Service Mileage	km
Previous Usage		Imported	No
Manufacturer Warrenty			







Equipment

Trip Computer	Airbag Status	Ambientlighting	Bluetooth telephone interface
Digital Radio	Front parking sensors	Remote adjusting wing mirrors	Satellite navigation
CD Player	Leather steering wheel	Rain sensitive windscreen wipers	USB Socket
Alloys wheels	Anti-lock braking	Cruise control	Front fog lamps
Heated wing mirrors	Remote central locking	Stability control	Electrically folding wing mirrors
LED Headlamps	Rear parking sensors		

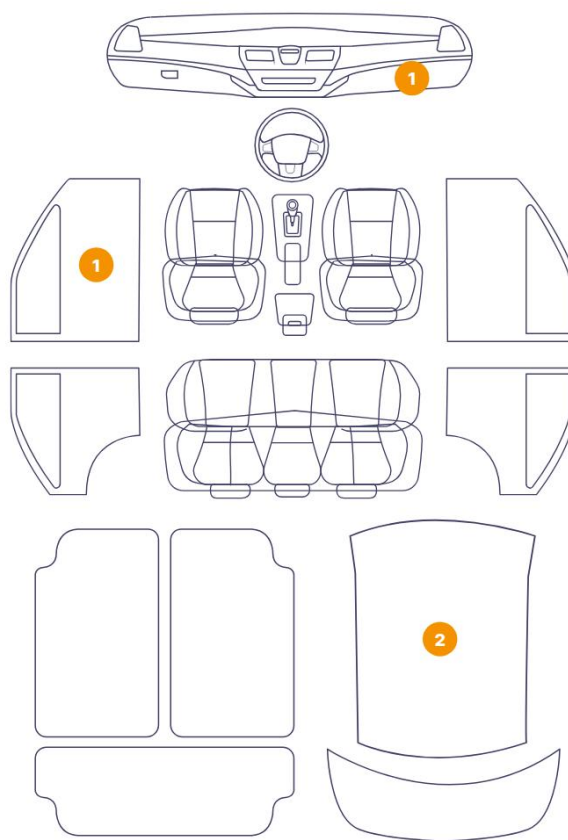
Equipment Details

Air Conditioning	Dual Zone Climate Control	Alloy Wheel Size	17
------------------	---------------------------	------------------	----

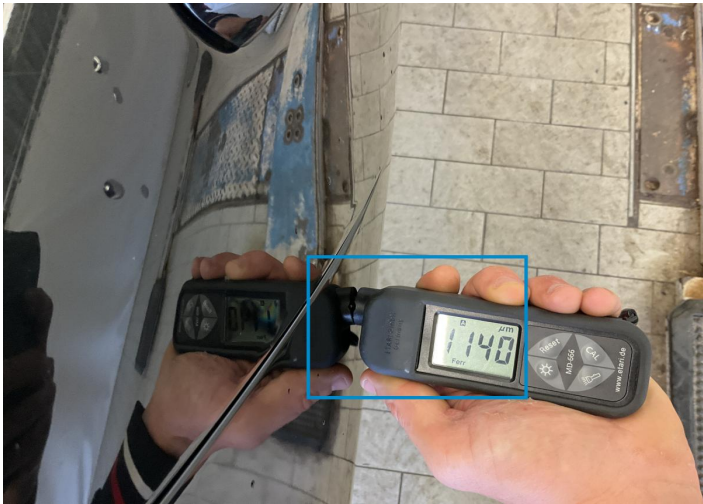
Wheels & Tyres

Right Front Tyre Depth	6	Left Front Tyre Depth	6
Right Rear Tyre Depth	6	Left Rear Tyre Depth	6

4 Schäden

6/12 - Report Number P20250902121218

14	Center Console	Interior / Scratched
15	Roof Upholstery	Interior / Loose
16	Roof Upholstery	Interior / Loose



1. Side Panel / Back Right
Paint / Poor Previous Repair -



2. Door / Back Right
Paint / Poor Previous Repair -



3. Tailgate
Paint / Scratch / Line -



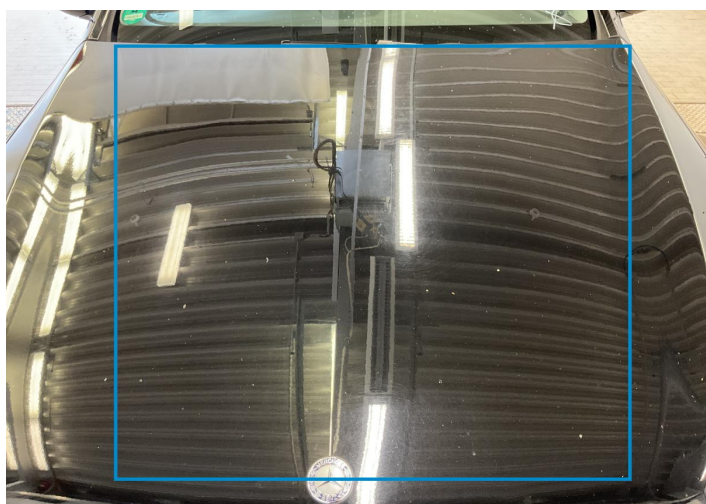
4. Bumper / Back
Paint / Scratch / Scuff -



5. Bumper / Back
Paint / Scratch / Scuff -



6. Door / Front Right
Paint / Scratch / Scuff -



7. Hood
Paint / Scratch / Line -



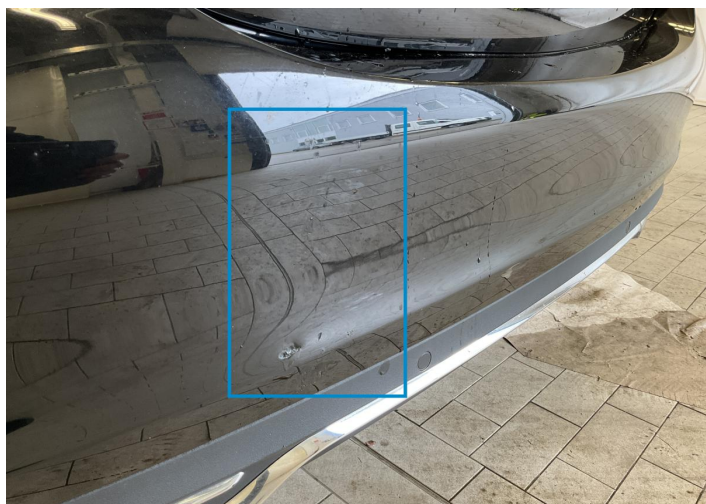
8. Front Light / Front Right
Glass Break -



9. Fender / Front Left
Paint / Chipping -



10. Bumper / Back
Bodywork / Poor Previous Repair -



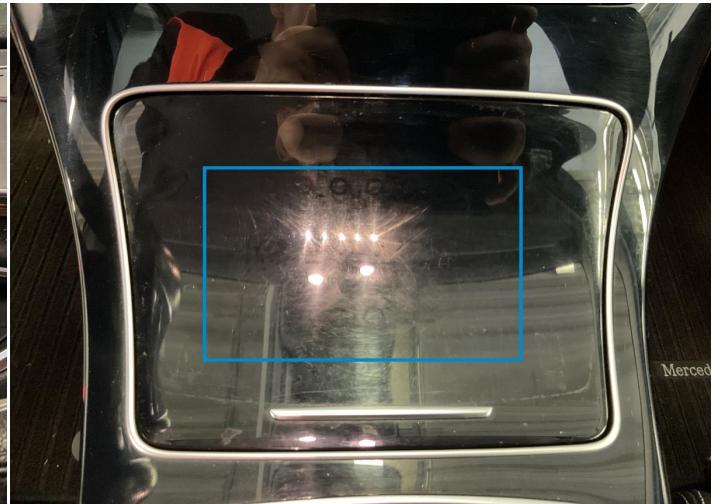
11. Bumper / Back
Paint / Scratch / Line -



12. Bumper / Back
Bodywork / Breakage -



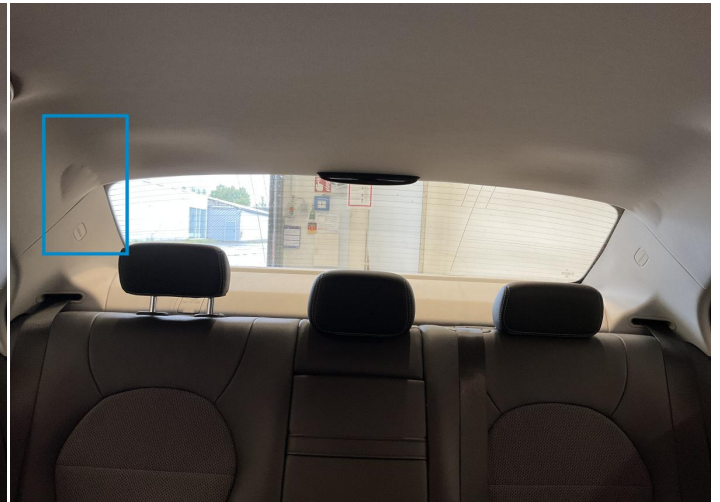
13. Panel Filling / Front Left
Interior / Scratched -



14. Center Console
Interior / Scratched -



15. Roof Upholstery
Interior / Loose -



16. Roof Upholstery
Interior / Loose -

Mechanical Condition

Control Lights

Display Defect	✓	Service Light	✓
ABS Warning Light	✓	ESP Fault/Traction Control Malfunction Light	✓
Airbag Warning Light	✓	Oil Pressure Warning Light	✓
Brake Warning Light	✓	Power Steering Warning Light	✓
Alternator / Battery	✓	No Dashboard Lights	✓
Tire Pressure Monitoring System	✓		

Equipments Test

Main & Spare Keys Functioning	✓	Electric Windows	✓
Navigation System	✓	Audio Equipment	✓
Parking Sensors / Cameras Functioning	✓	Other Equipments	✓

Engine

Engine Status / EML	✓	Engine Leak Visible	✓
Engine Starts	✓		

Gearbox

Gear Box	✓
----------	---

Levels

Brakes Fluid	✓	Coolant Fluid	✓
--------------	---	---------------	---

Test Drive Inspection

Steering Wheel			
Steering Noise / Anomaly		✓	
Engine			
Engine Noise	✓	The Gears Scratch / Skip / Abnormal Operation	✓
Fume Quantity	✓	Power Loss	✓
Brake			
Brake System Anomaly		✓	
General			
Test Driven Status		✓	
✓ <i>No troubles detected, good condition or correct tests, according to vehicle age and mileage</i>			
! <i>Damages or malfunction detected that requires repairs by the buyer</i>			
NA <i>Not applicable</i>			
= <i>Not tested</i>			

Disclaimer

Please also note the "UserGuide condition report", which shows the scope of the vehicle description.

[User Guide](#)