



MERCEDES Classe C-204 SW Diesel
C SW 220 cdi Elegance

VIN NO WDD2042081F309196
Registration Number DV597FF



MOT Date	Number of Owners	Number of Keys	Odometer Reading
2025-09-12	-	-	92264 km
Last Service	Last Service Mileage	First Registration Date	Country First Registered
-	-	2009-02-03	Italy

Inspection Report Summary

Customer	BCA Lodi	Report Number	P20250919112513
Inspection Date / Place	2025-09-19 / BCA Lodi	Cosmetic Grade	5

Vehicle Summary

Vehicle Condition	Runner	VAT Type	Margin
Fuel Type	Diesel	Gearbox Type	Automatic
Colour	Blue	Engine Size (cc)	2148
Engine Size	2.1	No of Doors	5
Body Type	Stationwagon / Estate	Drive Train	Rear
Seat Colour	Black	No of Seats	5
Seat Covering Name		Seat Covering	Cloth
Charging Cables		WLTP CO2 Emissions	

Vehicle History & Documents

Service Book Available	-	Next Service Mileage	km
Previous Usage	Normal Use	Imported	No
Manufacturer Warrenty			





Equipment

Central locking	Alloys wheels	Volante multifuncion	Remote adjusting wing mirrors
Trip Computer	Stability control	Power assisted steering	Digital Radio
Parcel Shef	Remote central locking	Tyre Mobility Kit	

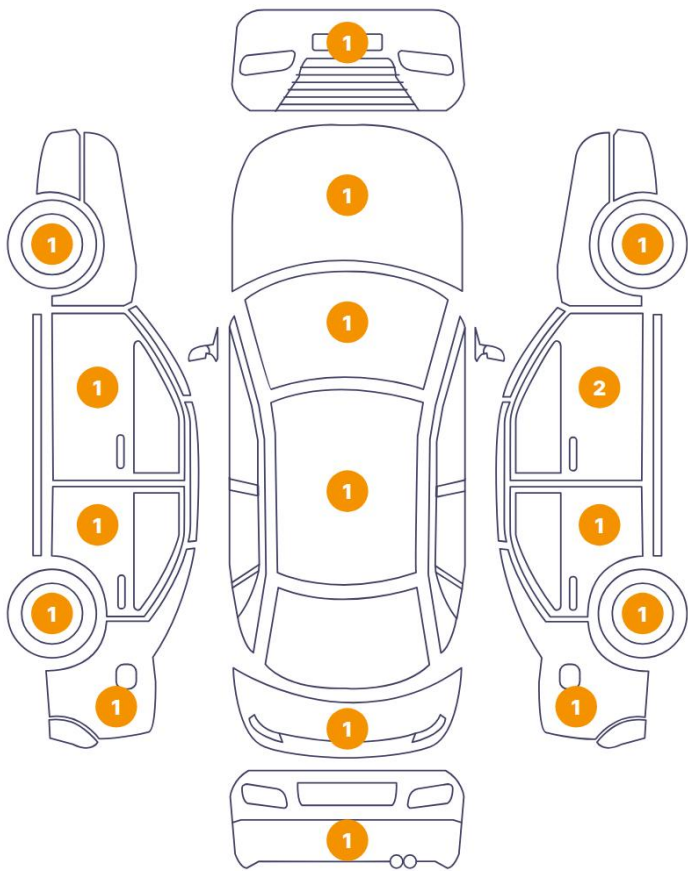
Wheels & Tyres

Mounted Tires

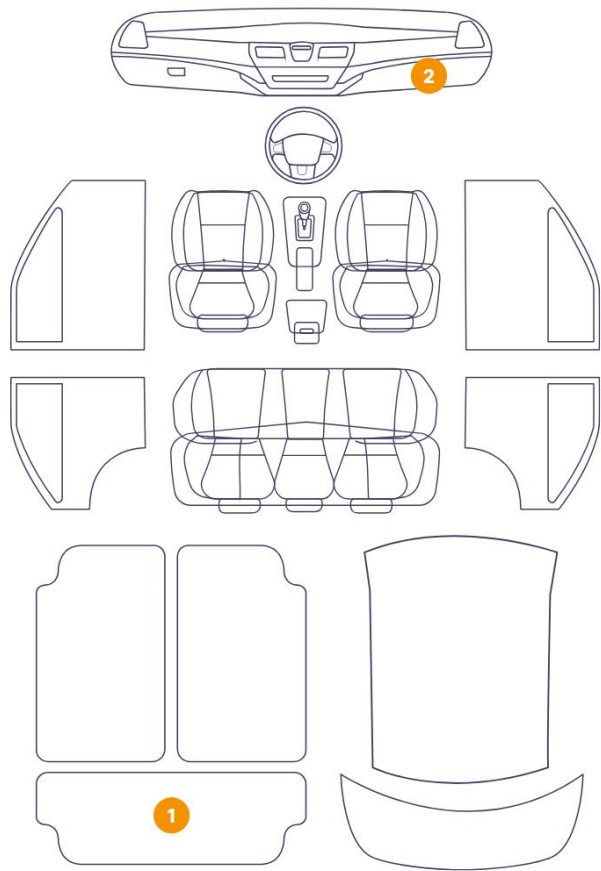
Tyre / Wheel Type	Summer	
	BRIDGESTONE	205/55//R16 - 91W / 2 mm
	BRIDGESTONE	205/55//R16 - 91W / 2 mm
	BRIDGESTONE	205/55//R16 - 91W / 2 mm
	BRIDGESTONE	205/55//R16 - 91W / 2 mm

Cosmetic Damage

17 Danni

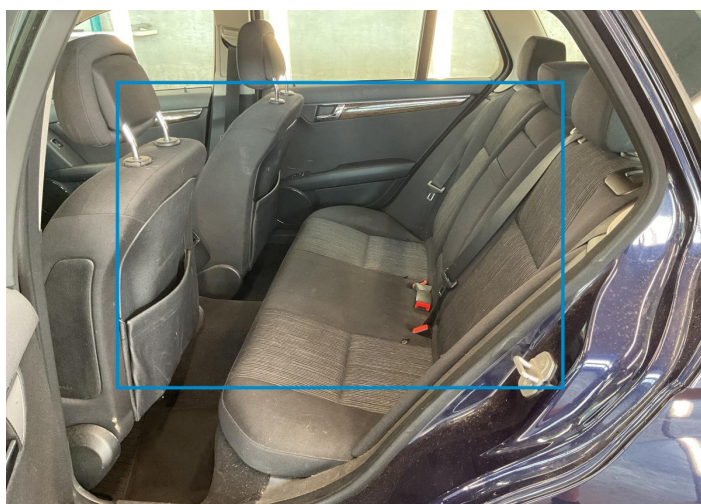


6 Danni

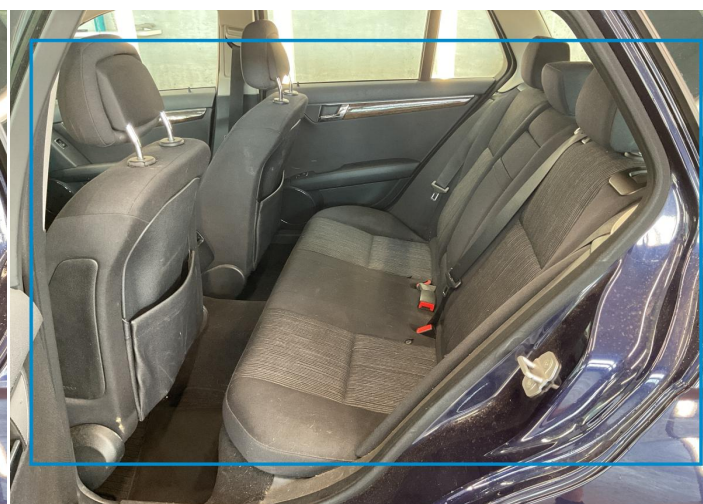


Component		Damage	Comments
1	Cabin	Interior / Dirty	
2	Cabin	Interior / Dirty	
3	Trunk Carpet	Interior / Worn - out	
4	Rim / Front Right	Out of Bodywork / Scratch	
5	Bumper / Front	Bodywork / Breakage	
6	Hood	Paint / Scratch / Line	
7	Windshield / Front	Glass Break	
8	Rim / Front Left	Out of Bodywork / Scratch	
9	Door / Front Left	Paint / Scratch / Line	
10	Door / Back Left	Bodywork / Dent	
11	Rim / Back Left	Out of Bodywork / Scratch	
12	Fender / Back Left	Bodywork / Dent	

13	Tailgate	Bodywork / Dent
14	Bumper / Back	Bodywork / Dent
15	Rim / Back Right	Out of Bodywork / Scratch
16	Fender / Back Right	Bodywork / Dent
17	Door / Back Right	Paint / Scratch / Line
18	Door / Front Right	Bodywork / Dent
19	Roof	Paint / Poor Previous Repair
20	Pillar / Front Right	Paint / Scratch / Line
21	Dashboard / Front	Interior / Scratched
22	Center Console	Interior / Worn - out
23	Cabin	Interior / Dirty



1. Cabin
Interior / Dirty -



2. Cabin
Interior / Dirty -



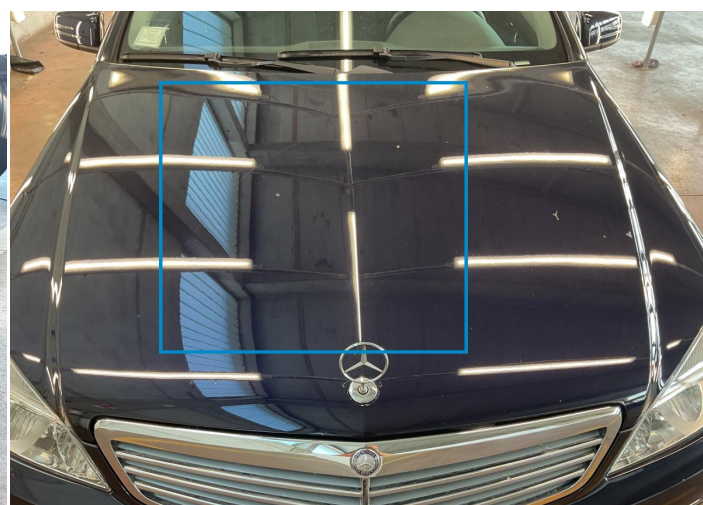
3. Trunk Carpet
Interior / Worn - out -



4. Rim / Front Right
Out of Bodywork / Scratch -



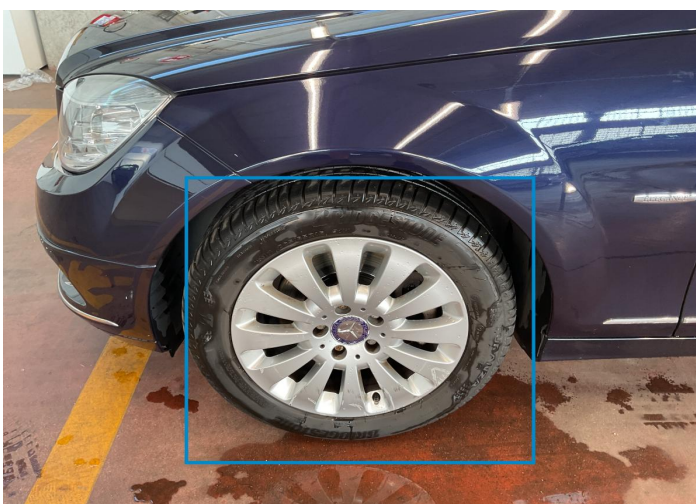
5. Bumper / Front
Bodywork / Breakage -



6. Hood
Paint / Scratch / Line -



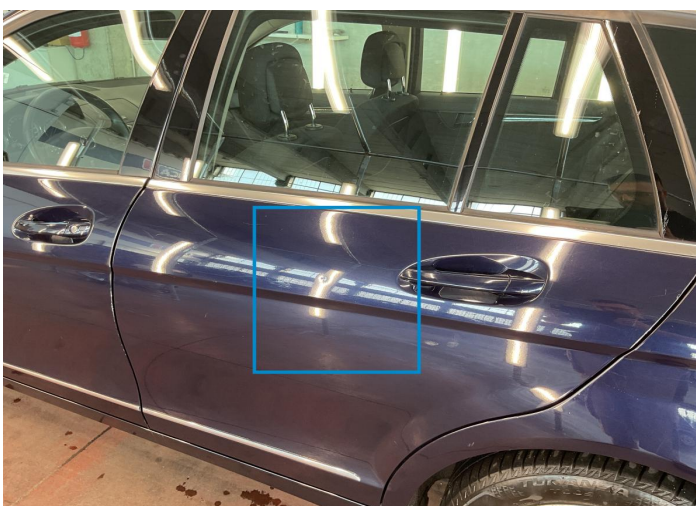
7. Windshield / Front
Glass Break -



8. Rim / Front Left
Out of Bodywork / Scratch -



9. Door / Front Left
Paint / Scratch / Line -



10. Door / Back Left
Bodywork / Dent -



11. Rim / Back Left
Out of Bodywork / Scratch -



12. Fender / Back Left
Bodywork / Dent -



13. Tailgate
Bodywork / Dent -



14. Bumper / Back
Bodywork / Dent -



15. Rim / Back Right
Out of Bodywork / Scratch -



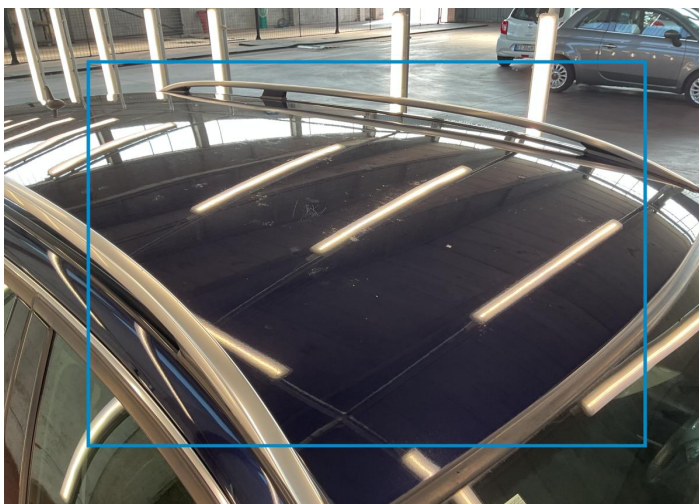
16. Fender / Back Right
Bodywork / Dent -



17. Door / Back Right
Paint / Scratch / Line -



18. Door / Front Right
Bodywork / Dent -



19. Roof
Paint / Poor Previous Repair -



20. Pillar / Front Right
Paint / Scratch / Line -



21. Dashboard / Front
Interior / Scratched -



22. Center Console
Interior / Worn - out -



23. Cabin
Interior / Dirty -

Mechanical Condition

Equipments Test

AC / Heating System



Other Equipments



Engine

Vehicle Start - up



Engine Starts



Engine Leak Visible



Clutch

Clutch Functioning



Levels

Brakes Fluid



Coolant Fluid



Test Drive Inspection

Other Checks

Steering



Brakes



Suspension



Equipments Test

Steering | Noise / Anomaly



Engine

Power Loss



Fume Quantity



Engine Noise



Gearbox

Manual Gearbox




General

Test Driven Status



 **No troubles detected, good condition or correct tests, according to vehicle age and mileage**

 **Damages or malfunction detected that requires repairs by the buyer**

 **Not applicable**

 **Not tested**