



MERCEDES-BENZ C-Klasse C 200 T CDI DPF Automatik

VIN NO WDD2042011F510517
Registration Number 011F510517



MOT Date



Last Service

2023-04-28

Number of Owners



Last Service Mileage

167844

Number of Keys



First Registration Date

2010-05-06

Odometer Reading

192727 km

Country First Registered



Inspection Report Summary

Customer	BCA Online	Report Number	P20250520112152
Inspection Date / Place	2025-05-20 / BCA Heidenheim	Cosmetic Grade	4

Vehicle Summary

Vehicle Condition	Runner	VAT Type	Margin
Fuel Type	Diesel	Road Worthy	Yes
Colour	Black	Engine Size (cc)	2143
Engine Size	2.1	No of Doors	5
Body Type	Stationwagon / Estate	Drive Train	Rear
Seat Colour		No of Seats	5
Seat Covering Name	schwarz	Seat Covering	Cloth/Synthetic Leather
Charging Cables		NEDC CO2 Rating (q/km)	153
Gearbox Type	Automatic		

Vehicle History & Documents

Service Book Available	Incomplete	Next Service Mileage	km
Previous Usage		Imported	No
Manufacturer Warrenty			







Equipment

Trip Computer	Alloys wheels	Bluetooth telephone interface	Diesel particulate filter
Front parking sensors	Remote central locking	Satellite navigation	Stability control
Electrically folding wing mirrors	Radio	Airbag Status	Anti-lock braking
Cruise control	Front fog lamps	Remote adjusting wing mirrors	Roof rails
Split folding rear seats	CD Player	Leather steering wheel	Rear parking sensors

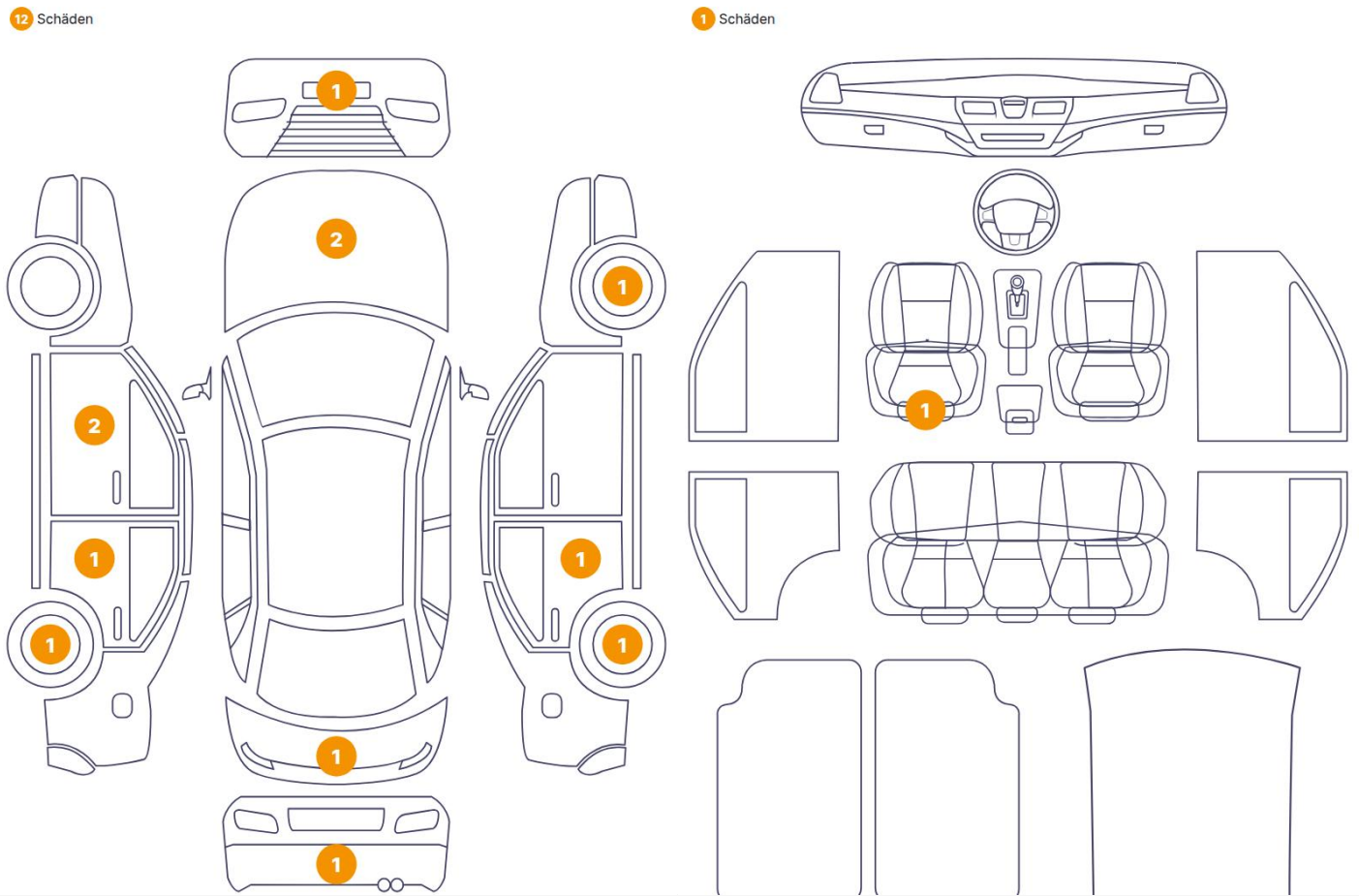
Equipment Details

Air Conditioning	Dual Zone Climate Control	Alloy Wheel Size	16
Extra Wheel / Tyre Set	Summer Tyres - Alloy	Seat Heating	Front

Wheels & Tyres

Left Front Tyre Depth	3	Right Front Tyre Depth	5
Right Rear Tyre Depth	6	Left Rear Tyre Depth	6
Extra Wheel - 1 Tyre Depth	2	Extra Wheel - 2 Tyre Depth	3
Extra Wheel - 3 Tyre Depth	3	Extra Wheel - 4 Tyre Depth	4

Cosmetic Damage



Component		Damage	Comments
1	Seat / Front Left	Interior / Holed	
2	Hood	Bodywork / Dent / Dent	
3	Hood	Bodywork / Dent / Dent	
4	Corner Bumper / Front Right	Bodywork / Dent / Dent	
5	Rim / Front Right	Paint / Corrosion	
6	Door / Back Right	Bodywork / Dent / Dent	
7	Rim / Back Right	Paint / Corrosion	
8	Corner Bumper / Back Right	Bodywork / Breakage / Hole	
9	Tailgate	Bodywork / Dent / Dent	
10	Rim / Back Left	Paint / Corrosion	
11	Door / Back Left	Bodywork / Dent / Dent	
12	Door / Front Left	Paint / Scratch / Scuff	
13	Mirror Shell / Front Left	Bodywork / Breakage / Crack	



1. Seat / Front Left
Interior / Holed -



2. Hood
Bodywork / Dent / Dent -



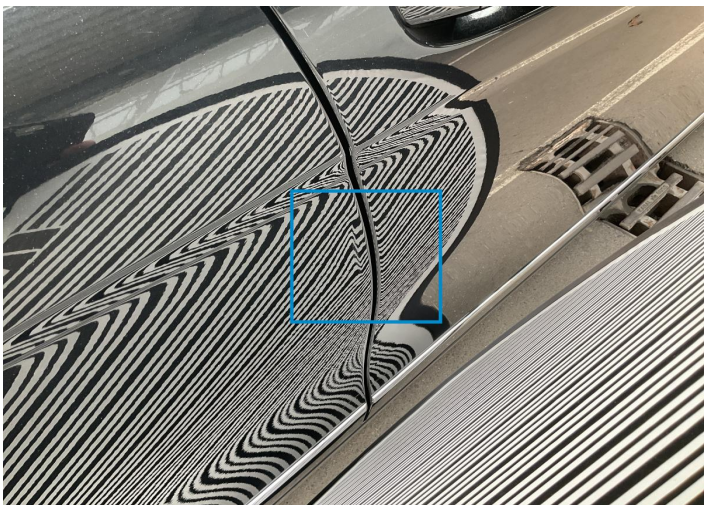
3. Hood
Bodywork / Dent / Dent -



4. Corner Bumper / Front Right
Bodywork / Dent / Dent -



5. Rim / Front Right
Paint / Corrosion -



6. Door / Back Right
Bodywork / Dent / Dent -



7. Rim / Back Right
Paint / Corrosion -



8. Corner Bumper / Back Right
Bodywork / Breakage / Hole -



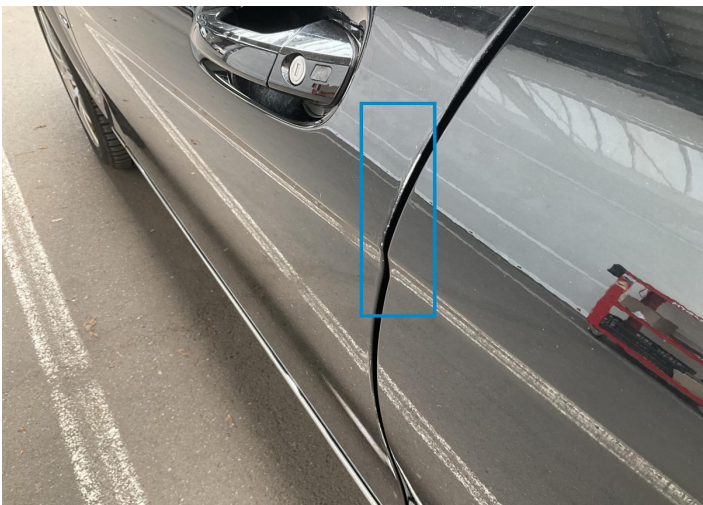
9. Tailgate
Bodywork / Dent / Dent -



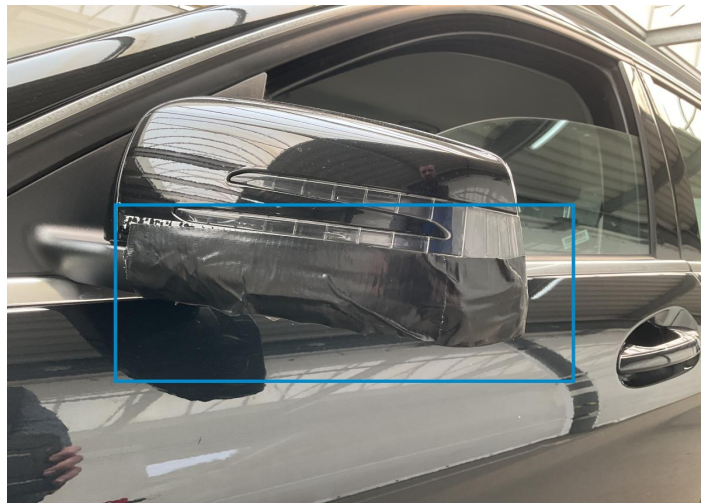
10. Rim / Back Left
Paint / Corrosion -



11. Door / Back Left
Bodywork / Dent / Dent -



12. Door / Front Left
Paint / Scratch / Scuff -



13. Mirror Shell / Front Left
Bodywork / Breakage / Crack -

Mechanical Condition

Control Lights

Display Defect	✓	ABS Warning Light	✓
ESP Fault/Traction Control Malfunction Light	✓	Diesel Particulate Filter Light	✓
Airbag Warning Light	✓	Oil Pressure Warning Light	✓
Brake Warning Light	✓	Power Steering Warning Light	✓
No Dashboard Lights	✓	Tire Pressure Monitoring System	✓

Equipments Test

Main & Spare Keys Functioning	✓	Electric Windows	✓
Navigation System	✓	Audio Equipment	✓
Parking Sensors / Cameras Functioning	✓	AC / Heating System	✓

Engine

Engine Status / EML	✓	Engine Leak Visible	✓
Engine Starts	✓		

Gearbox

Gear Box	✓
----------	---

Levels

Brakes Fluid	✓	Coolant Fluid	✓
--------------	---	---------------	---

Test Drive Inspection

Steering Wheel			
Steering Noise / Anomaly		✓	
Engine			
Engine Noise	✓	The Gears Scratch / Skip / Abnormal Operation	✓
Fume Quantity	✓	Power Loss	✓
Brake			
Brake System Anomaly		✓	
General			
Test Driven Status		✓	
✓ <i>No troubles detected, good condition or correct tests, according to vehicle age and mileage</i>			
! <i>Damages or malfunction detected that requires repairs by the buyer</i>			
NA <i>Not applicable</i>			
= <i>Not tested</i>			

Disclaimer

Please also note the "UserGuide condition report", which shows the scope of the vehicle description.

[User Guide](#)