



MERCEDES-BENZ A-Klasse
A 200

VIN NO WDD1770871J080036
Registration Number 871J080036



MOT Date	Number of Owners	Number of Keys	Odometer Reading
2027-08-01	3	2	31066 km
Last Service	Last Service Mileage	First Registration Date	Country First Registered
-	-	2019-04-02	Germany

Inspection Report Summary

Customer	BCA Online	Report Number	P20250916084457
Inspection Date / Place	2025-09-16 / ARS Altmann AG Riedstadt	Cosmetic Grade	2

Vehicle Summary

Vehicle Condition	Runner	VAT Type	Qualifying
Fuel Type	Petrol	Road Worthy	Yes
Colour	Silver	Engine Size (cc)	1332
Engine Size	1.3	No of Doors	5
Body Type	Sedan	Drive Train	Front
Seat Colour		No of Seats	5
Seat Covering Name	Schwarz/Weiss	Seat Covering	Synthetic Leather
Charging Cables		WLTP CO2 Emissions	
Gearbox Type	Manual		

Vehicle History & Documents

Service Book Available	Missing	Next Service Mileage	km
Previous Usage		Imported	No
Manufacturer Warrenty			







Equipment

Traffic sign recognition	USB Socket	Alloys wheels	Anti-lock braking
Cruise control	Digital dashboard	Heated wing mirrors	Remote adjusting wing mirrors
Reversing Camera	Split folding rear seats	Central locking	Electrically folding wing mirrors
Keyless Entry	Leather steering wheel	Radio	Rear parking sensors
Trip Computer	Airbag Status	Ambient lighting	Bluetooth telephone interface
Digital Radio	Front parking sensors	Parking Assistance	Remote central locking
Satellite navigation	Stability control	Distance warning system	Emergency brake assist
Lane assist	LED Headlamps	Rain sensitive windscreen wipers	

Equipment Details

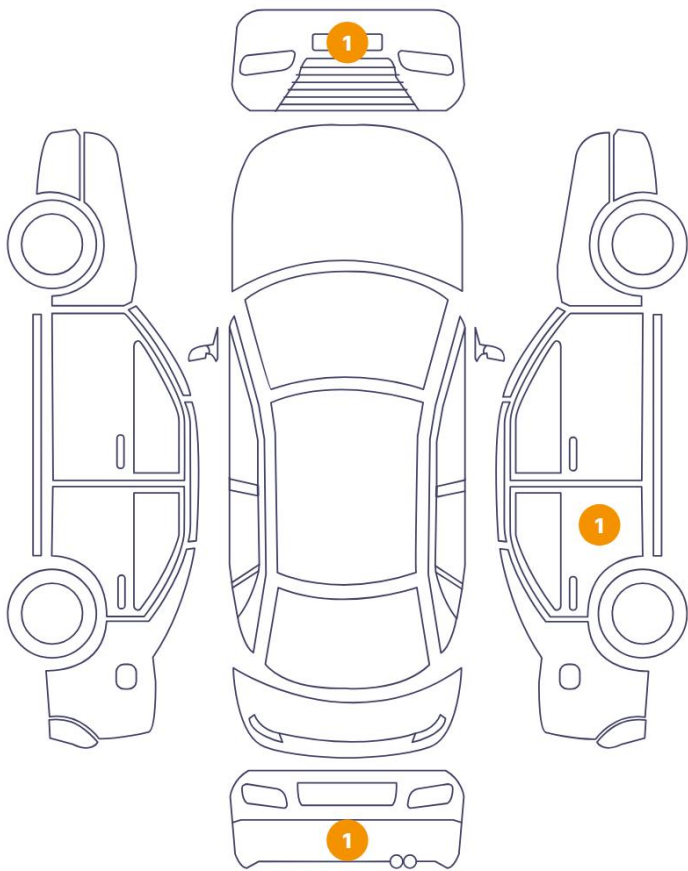
Air Conditioning	Dual Zone Climate Control	Alloy Wheel Size	18
Seat Heating	Front		

Wheels & Tyres

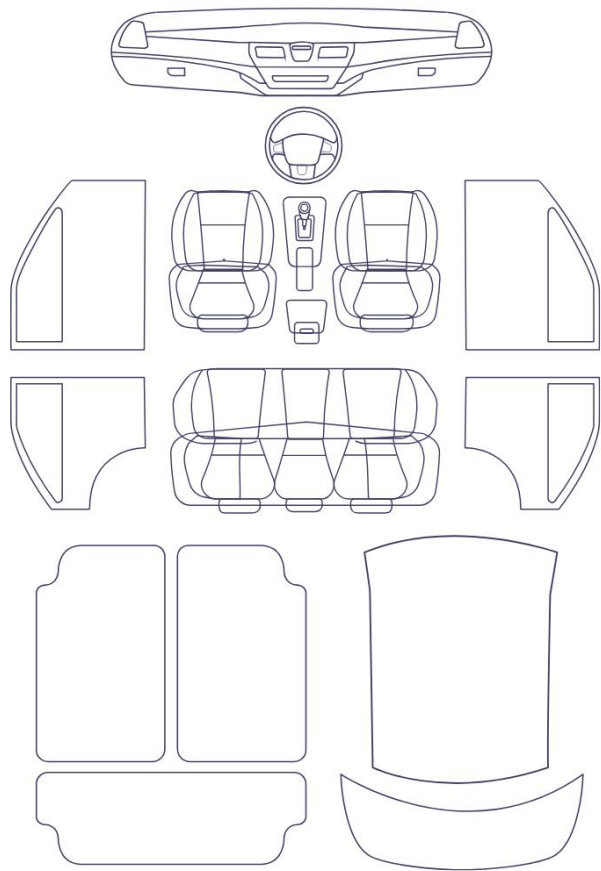
Right Front Tyre Depth	4	Left Front Tyre Depth	4
Right Rear Tyre Depth	6	Left Rear Tyre Depth	7

Cosmetic Damage

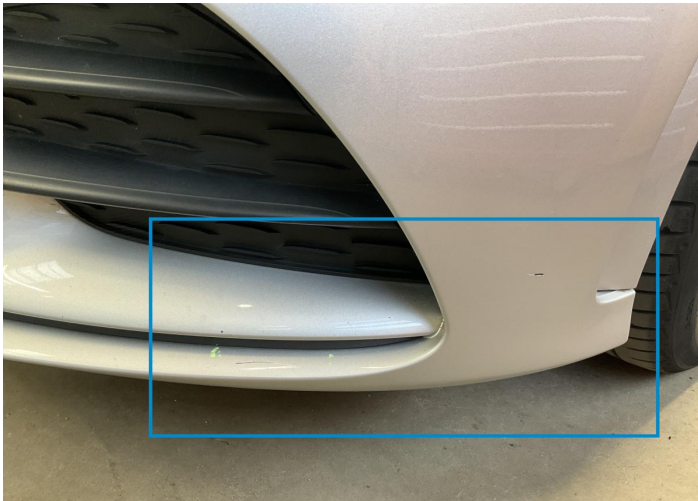
3 Schäden



0 Schäden



Component		Damage	Comments
1	Bumper / Front	Paint / Scratch / Scuff	
2	Bumper / Back	Paint / Scratch / Scuff	
3	Pillar / Back Right	Paint / Scratch / Scuff	



1. Bumper / Front
Paint / Scratch / Scuff -



2. Bumper / Back
Paint / Scratch / Scuff -



3. Pillar / Back Right
Paint / Scratch / Scuff -

Mechanical Condition

Control Lights

Display Defect	✓	Service Light	✓
ABS Warning Light	✓	ESP Fault/Traction Control Malfunction Light	✓
Airbag Warning Light	✓	Brake Warning Light	✓
Oil Pressure Warning Light	✓	Power Steering Warning Light	✓
Alternator / Battery	✓	No Dashboard Lights	✓
Tire Pressure Monitoring System	✓		

Equipments Test

Central Locking	✓	Main & Spare Keys Functioning	✓
Electric Windows	✓	Navigation System	✓
Parking Sensors / Cameras Functioning	✓	AC / Heating System	✓

Engine

Engine Status / EML	✓	Engine Leak Visible	✓
Engine Starts	✓		

Gearbox

Gear Box	✓
----------	---

Levels

Brakes Fluid	✓	Coolant Fluid	✓
--------------	---	---------------	---

Test Drive Inspection

Steering Wheel			
Steering Noise / Anomaly		✔	
Engine			
Engine Noise	✔	The Gears Scratch / Skip / Abnormal Operation	✔
Fume Quantity	✔	Power Loss	✔
Clutch			
Clutch Functioning		✔	
Brake			
Brake System Anomaly		✔	
General			
Test Driven Status		✔	
✔ No troubles detected, good condition or correct tests, according to vehicle age and mileage			
! Damages or malfunction detected that requires repairs by the buyer			
NA Not applicable			
= Not tested			

Disclaimer

Please also note the "UserGuide condition report", which shows the scope of the vehicle description.

[User Guide](#)