



MERCEDES-BENZ A-Klasse
A 200 d 8G-DCT

VIN NO WDD1770121J111253
Registration Number 121J111253



MOT Date	Number of Owners	Number of Keys	Odometer Reading
2026-05-01	2	2	113991 km
Last Service	Last Service Mileage	First Registration Date	Country First Registered
2025-02-19	102065	2019-06-28	Germany

Inspection Report Summary

Customer	BCA Online	Report Number	P20250929112914
Inspection Date / Place	2025-09-29 / HARTMANN Compound-Professionals GmbH Dorfmark	Cosmetic Grade	3

Vehicle Summary

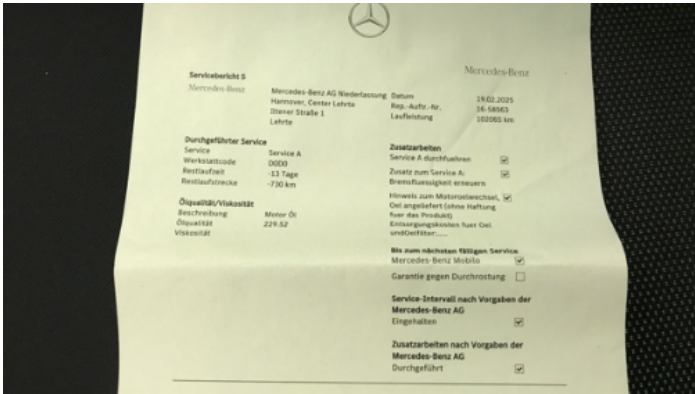
Vehicle Condition	Runner	VAT Type	Margin
Fuel Type	Diesel	Road Worthy	Yes
Colour	Black	Engine Size (cc)	1950
Engine Size	2.0	No of Doors	5
Body Type	Sedan	Drive Train	Front
Seat Colour		No of Seats	5
Seat Covering Name	Schwarz	Seat Covering	Cloth
Charging Cables		WLTP CO2 Emissions	
Gearbox Type	Automatic		

Vehicle History & Documents

Service Book Available	Computer Print Out Available	Next Service Mileage	km
Previous Usage		Imported	No
Manufacturer Warrenty			







Equipment

USB Socket	Alloys wheels	Bluetooth telephone interface	Diesel particulate filter
Front parking sensors	Remote central locking	Stability control	Radio
Airbag Status	Anti-lock braking	Cruise control	Digitaldashboard
Remote adjusting wing mirrors	Satellite navigation	Central locking	Rear parking sensors

Equipment Details

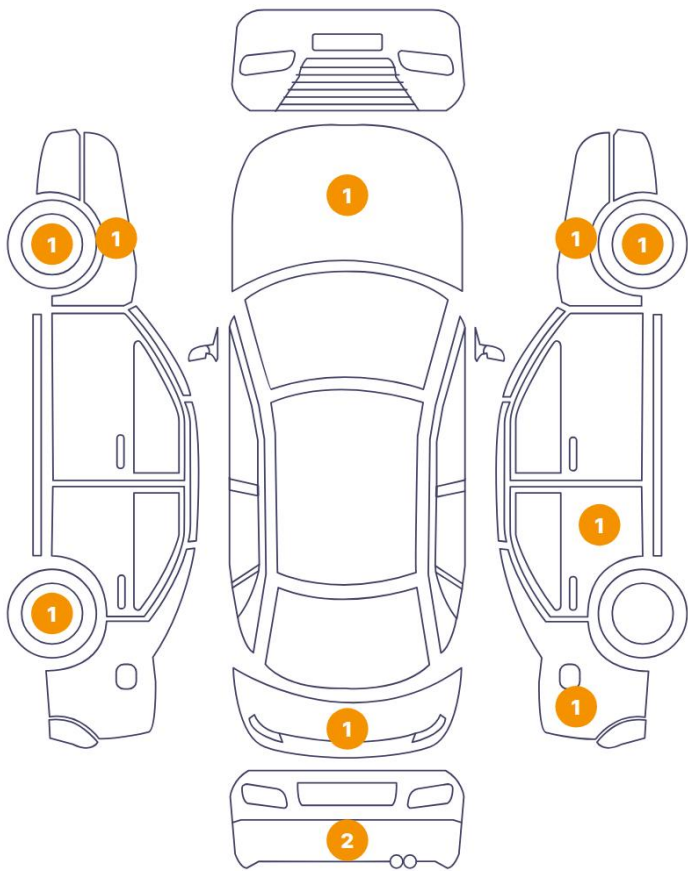
Air Conditioning	Climate Control	Alloy Wheel Size	18
Seat Heating	Front		

Wheels & Tyres

Right Front Tyre Depth	4	Left Front Tyre Depth	5
Right Rear Tyre Depth	6	Left Rear Tyre Depth	3

Cosmetic Damage

11 Damages



0 Damages



Component		Damage	Comments
1	Hood	Paint / Stone Chip	
2	Rim / Front Right	Out of Bodywork / Scratch	
3	Fender / Front Right	Paint / Stone Chip	
4	Door / Back Right	Paint / Scratch / Scuff	
5	Fender / Back Right	Paint / Scratch / Scuff	
6	Bumper / Back	Paint / Scratch / Scuff	
7	Tailgate	Paint / Scratch / Scuff	
8	Corner Bumper / Back Left	Bodywork / Dent / Dent	
9	Rim / Back Left	Out of Bodywork / Scratch	
10	Wing Expander / Front Left	Paint / Scratch / Scuff	
11	Rim / Front Left	Out of Bodywork / Scratch	



1. Hood
Paint / Stone Chip -



2. Rim / Front Right
Out of Bodywork / Scratch -



3. Fender / Front Right
Paint / Stone Chip -



4. Door / Back Right
Paint / Scratch / Scuff -



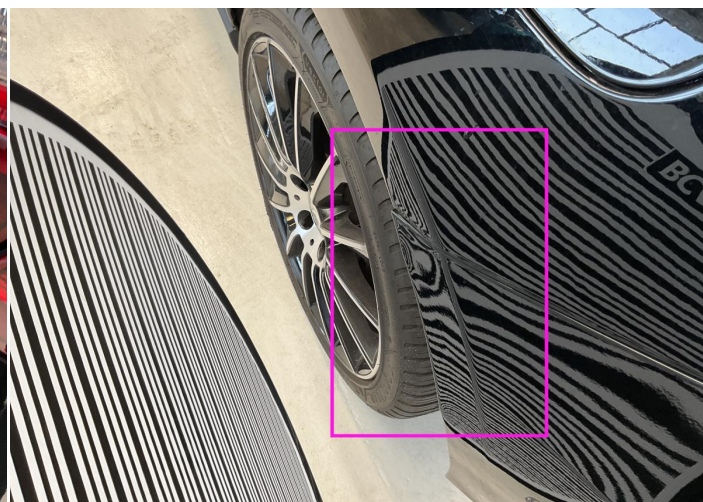
5. Fender / Back Right
Paint / Scratch / Scuff -



6. Bumper / Back
Paint / Scratch / Scuff -



7. Tailgate
Paint / Scratch / Scuff -



8. Corner Bumper / Back Left
Bodywork / Dent / Dent -



9. Rim / Back Left
Out of Bodywork / Scratch -



10. Wing Expander / Front Left
Paint / Scratch / Scuff -



11. Rim / Front Left
Out of Bodywork / Scratch -

Mechanical Condition

Control Lights

Display Defect	✓	ABS Warning Light	✓
ESP Fault/Traction Control Malfunction Light	✓	Airbag Warning Light	✓
Diesel Particulate Filter Light	✓	Oil Pressure Warning Light	✓
Brake Warning Light	✓	Power Steering Warning Light	✓
Alternator / Battery	✓	No Dashboard Lights	✓

Equipments Test

Central Locking	✓	Main & Spare Keys Functioning	✓
Electric Windows	✓	Navigation System	✓
Audio Equipment	✓	Parking Sensors / Cameras Functioning	✓
AC / Heating System	✓	Other Equipments	✓

Engine

Engine Status / EML	✓	Engine Leak Visible	✓
Engine Starts	✓		

Levels

Brakes Fluid	✓	Coolant Fluid	✓
--------------	---	---------------	---

Test Drive Inspection

Steering Wheel			
Steering Noise / Anomaly		✓	
Engine			
Engine Noise	✓	Fume Quantity	✓
Power Loss	✓		
Brake			
Brake System Anomaly	✓		
General			
Test Driven Status		✓	
✓ <i>No troubles detected, good condition or correct tests, according to vehicle age and mileage</i>			
! <i>Damages or malfunction detected that requires repairs by the buyer</i>			
NA <i>Not applicable</i>			
☐ <i>Not tested</i>			

Disclaimer

Please also note the "UserGuide condition report", which shows the scope of the vehicle description.

[User Guide](#)