



MERCEDES-BENZ CLA  
CLA Shooting Brake 220 d 7G-DCT

VIN NO WDD1179031N601795  
Registration Number 031N601795



MOT Date	Number of Owners	Number of Keys	Odometer Reading
2026-05-01	2	2	124912 km
Last Service	Last Service Mileage	First Registration Date	Country First Registered
-	-	2017-11-15	Germany

Inspection Report Summary

Customer	BCA Online	Report Number	P20250904143550
Inspection Date / Place	2025-09-04 / BCA Neuss	Cosmetic Grade	4

Vehicle Summary

Vehicle Condition	Runner	VAT Type	Margin
Fuel Type	Diesel	Road Worthy	No
Colour	Blue	Engine Size (cc)	2143
Engine Size	2.1	No of Doors	5
Body Type	Stationwagon / Estate	Drive Train	Front
Seat Colour		No of Seats	5
Seat Covering Name	schwarz	Seat Covering	Synthetic Leather
Charging Cables		NEDC CO2 Rating (q/km)	105
Gearbox Type	Automatic		

Vehicle History & Documents

Service Book Available	Missing	Next Service Mileage	km
Previous Usage		Imported	No
Manufacturer Warrenty			











Equipment

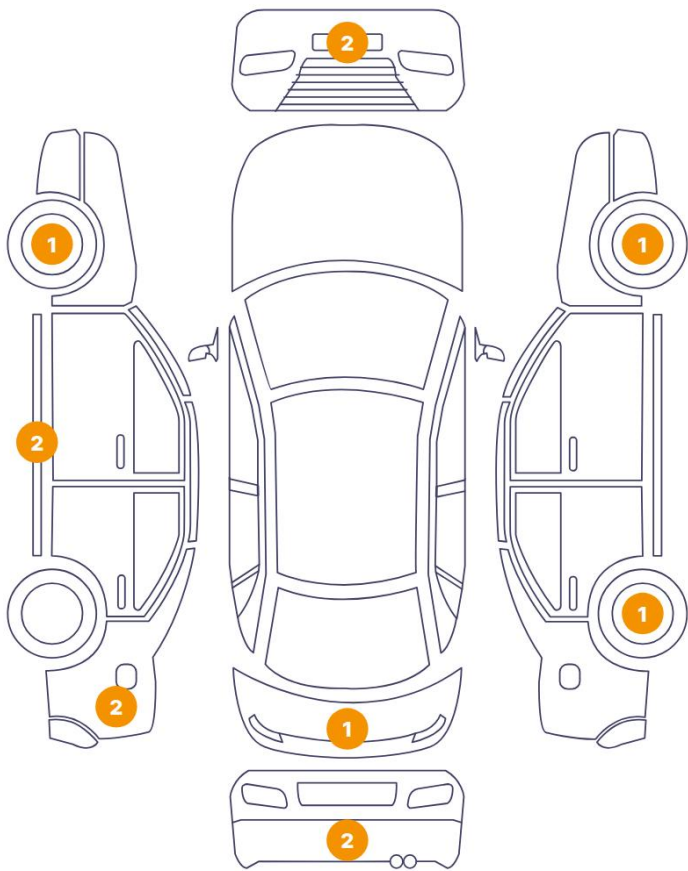
Tinted Glass	Alloys wheels	Cruise control	Front parking sensors
Remote central locking	Satellite navigation	CD Player	Electrictailgate
LED Headlamps	Rear parking sensors	Airbag Status	Anti-lock braking
Diesel particulate filter	Remote adjusting wing mirrors	Reversing Camera	Stability control
Electrically folding wing mirrors	Leather steering wheel	Radio	

Equipment Details

Air Conditioning	Dual Zone Climate Control	Alloy Wheel Size	18
Seat Heating	Front	Sunroof Type	Opening Panoramic

Cosmetic Damage

12 Schäden



0 Schäden



Component		Damage	Comments
1	Rim / Front Right	Out of Bodywork / Scratch	
2	Bumper / Front	Paint / Scratch / Scuff	
3	Bumper / Front	Paint / Scratch / Scuff	
4	Rim / Front Left	Out of Bodywork / Scratch	
5	Rocker Panel / Center Left	Bodywork / Dent / Dent	
6	Fender / Back Left	Bodywork / Dent / Dent	
7	Rocker Panel / Center Left	Bodywork / Dent / Dent	
8	Bumper / Back	Paint / Scratch / Scuff	
9	Fender / Back Left	Paint / Scratch / Scuff	
10	Tailgate	Paint / Scratch / Scuff	
11	Rim / Back Right	Out of Bodywork / Scratch	
12	Bumper / Back	Paint / Scratch / Scuff	

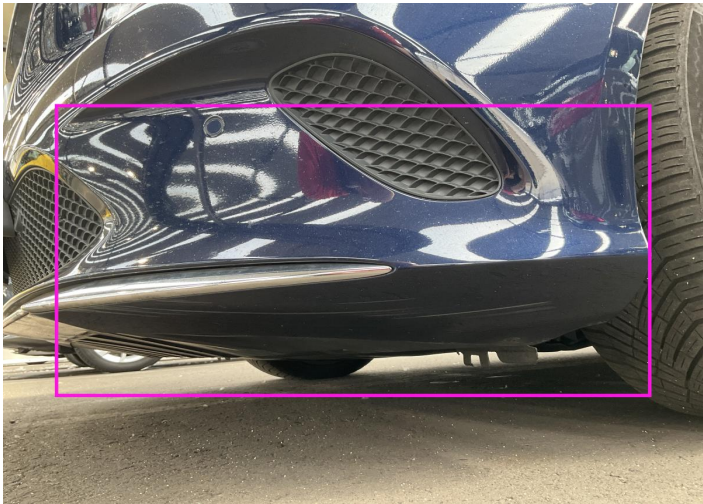




1. Rim / Front Right  
Out of Bodywork / Scratch -



2. Bumper / Front  
Paint / Scratch / Scuff -



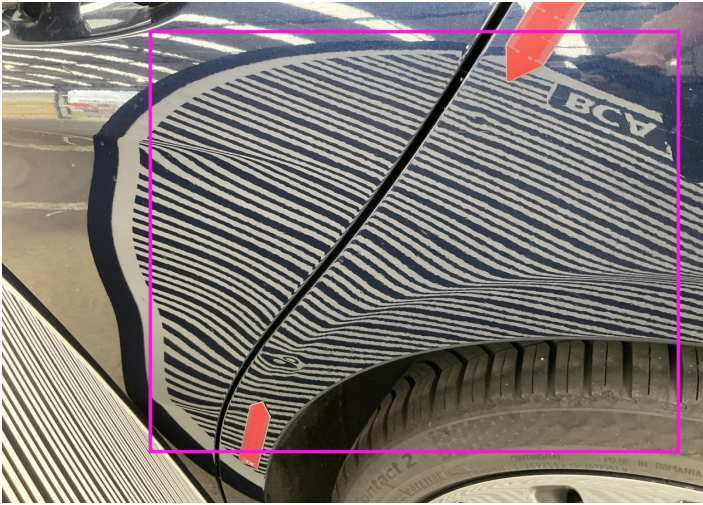
3. Bumper / Front  
Paint / Scratch / Scuff -



4. Rim / Front Left  
Out of Bodywork / Scratch -



5. Rocker Panel / Center Left  
Bodywork / Dent / Dent -



6. Fender / Back Left  
Bodywork / Dent / Dent -

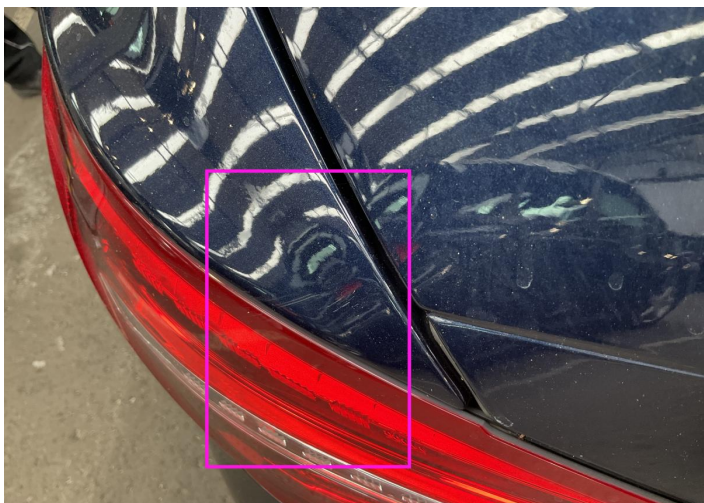




7. Rocker Panel / Center Left  
Bodywork / Dent / Dent -



8. Bumper / Back  
Paint / Scratch / Scuff -



9. Fender / Back Left  
Paint / Scratch / Scuff -



10. Tailgate  
Paint / Scratch / Scuff -



11. Rim / Back Right  
Out of Bodywork / Scratch -



12. Bumper / Back  
Paint / Scratch / Scuff -



## Mechanical Condition

### Control Lights

Display Defect	✓	ABS Warning Light	✓
ESP Fault/Traction Control Malfunction Light	✓	Diesel Particulate Filter Light	✓
Airbag Warning Light	✓	Oil Pressure Warning Light	✓
Brake Warning Light	✓	Power Steering Warning Light	✓
Alternator / Battery	✓	No Dashboard Lights	⚠
Tire Pressure Monitoring System	✓		

### Engine

Engine Status / EML	⚠	Engine Leak Visible	✓
Engine Starts	✓		

### Gearbox

Gear Box	✓
----------	---

### Equipments Test

Electric Windows	✓	Navigation System	✓
Audio Equipment	✓	Parking Sensors / Cameras Functioning	✓

### Levels

Brakes Fluid	✓	Coolant Fluid	✓
--------------	---	---------------	---

Test Drive Inspection

Steering Wheel			
Steering   Noise / Anomaly		✓	
Engine			
Engine Noise	✓	The Gears Scratch / Skip / Abnormal Operation	✓
Fume Quantity	✓	Power Loss	✓
Brake			
Brake System Anomaly		✓	
General			
Test Driven Status		✓	
✓ <i>No troubles detected, good condition or correct tests, according to vehicle age and mileage</i>			
! <i>Damages or malfunction detected that requires repairs by the buyer</i>			
NA <i>Not applicable</i>			
= <i>Not tested</i>			

Disclaimer

Please also note the "UserGuide condition report", which shows the scope of the vehicle description.

[User Guide](#)