



# MERCEDES-BENZ GLC

## GLC 350 d 4Matic 9G-TRONIC

VIN NO WDC2539251F565457  
Registration Number 251F565457



MOT Date

2025-10-01

Last Service

2023-10-17

Number of Owners

2

Last Service Mileage

44086

Number of Keys

2

First Registration Date

2018-11-27

Odometer Reading

60690 km

Country First Registered

Germany

### Inspection Report Summary

Customer	BCA Online	Report Number	P20250925161423
Inspection Date / Place	2025-09-25 / BCA Neuss	Cosmetic Grade	4

### Vehicle Summary

Vehicle Condition	Runner	VAT Type	Margin
Fuel Type	Diesel	Road Worthy	Yes
Colour	Red	Engine Size (cc)	2987
Engine Size	3.0	No of Doors	5
Body Type	SUV	Drive Train	All-Wheel-Drive permanent
Seat Colour		No of Seats	5
Seat Covering Name	Schwarz	Seat Covering	Cloth/Synthetic Leather
Charging Cables		NEDC CO2 Rating (q/km)	177
Gearbox Type	Automatic		

### Vehicle History & Documents

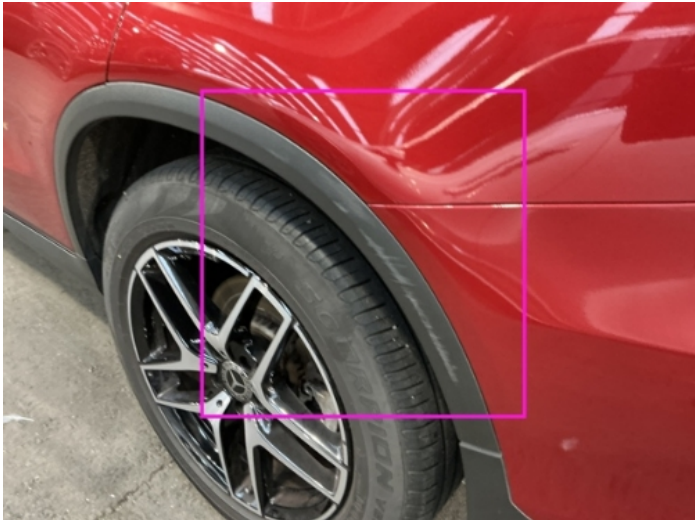
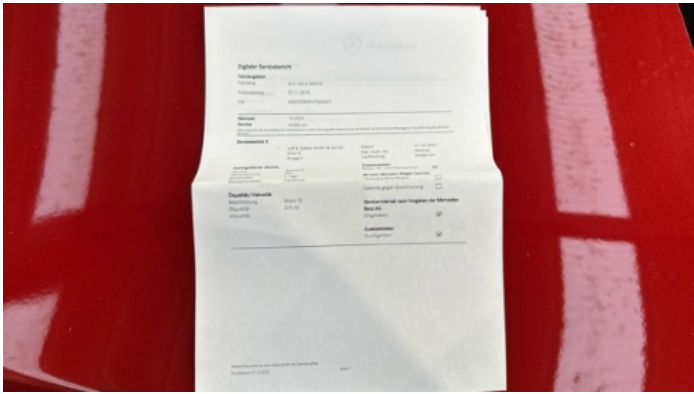
Service Book Available	Computer Print Out Available	Next Service Mileage	km
Previous Usage		Imported	No
Manufacturer Warrenty			











Equipment

Tinted Glass	USB Socket	Airbag Status	Anti-lock braking
Bluetooth telephone interface	Diesel particulate filter	Front parking sensors	Remote central locking
Roof rails	Stability control	Electrically adjustable seats	Electrictailgate
Leather steering wheel	Radio	Tow ball	360°camera
Alloys wheels	Blindspotassist	Cruise control	Fatiguewarningsystem
Remote adjusting wing mirrors	Reversing Camera	Satellite navigation	CD Player
Electrically folding wing mirrors	Laneassist	LED Headlamps	Rear parking sensors

Equipment Details

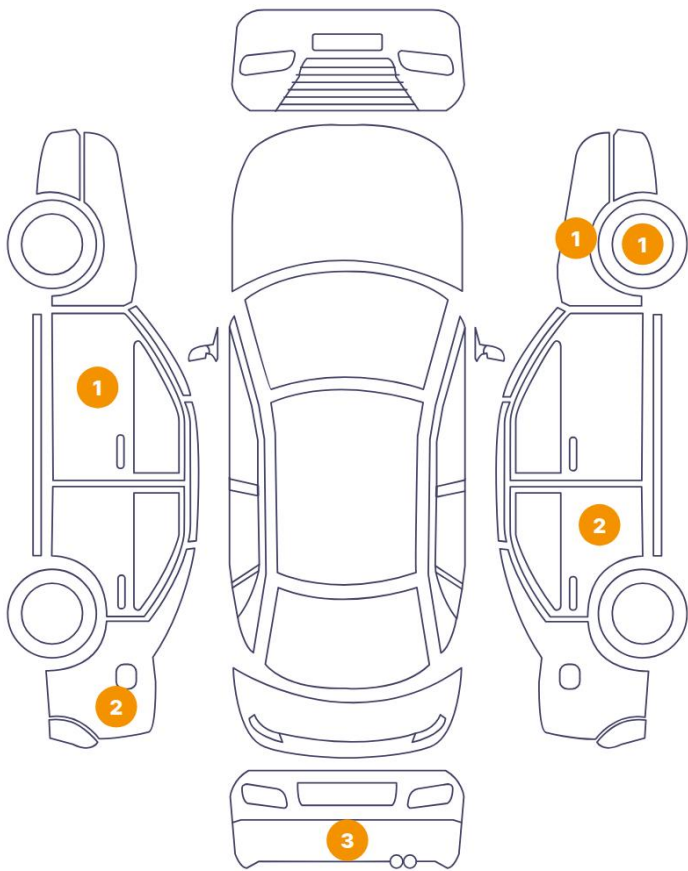
Tow Ball Type	Electronic	Air Conditioning	Dual Zone Climate Control
Alloy Wheel Size	19	Seat Heating	Front

Wheels & Tyres

Right Front Tyre Depth	5	Left Front Tyre Depth	5
Right Rear Tyre Depth	5	Left Rear Tyre Depth	5

Cosmetic Damage

10 Schäden



0 Schäden

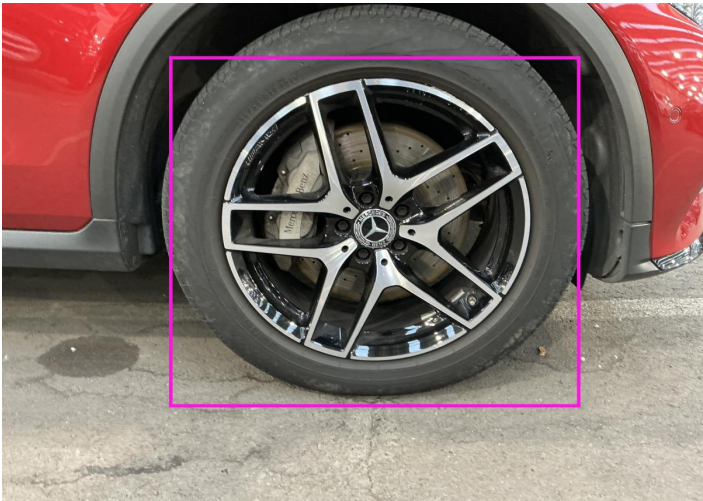


Component		Damage	Comments
1	Fender / Back Left	Paint / Poor Previous Repair	
2	Rim / Front Right	Out of Bodywork / Scratch	
3	Fender / Front Right	Paint / Scratch / Scuff	
4	Door / Back Right	Paint / Scratch / Scuff	
5	Pillar / Back Right	Paint / Scratch / Scuff	
6	Bumper / Back	Paint / Scratch / Scuff	
7	Bumper / Back	Bodywork / Breakage	
8	Bumper / Back	Paint / Scratch / Scuff	
9	Fender / Back Left	Paint / Scratch / Scuff	
10	Door / Front Left	Paint / Scratch / Scuff	

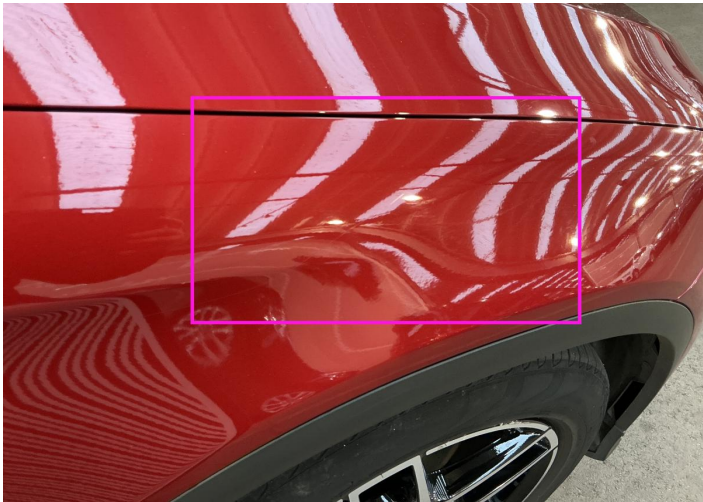




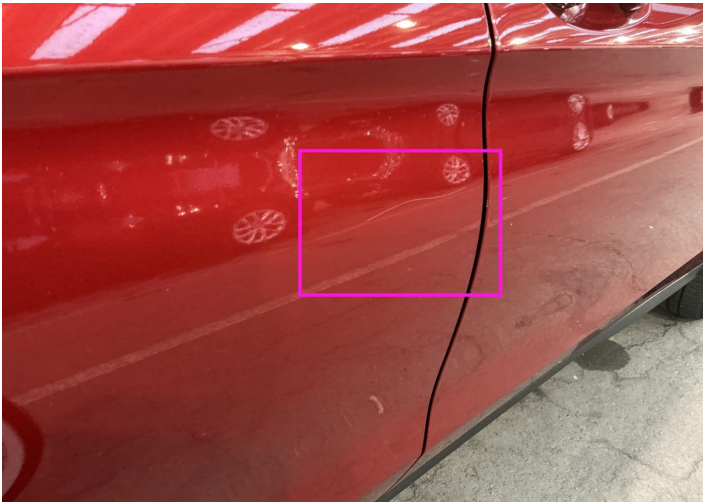
1. Fender / Back Left  
Paint / Poor Previous Repair -



2. Rim / Front Right  
Out of Bodywork / Scratch -



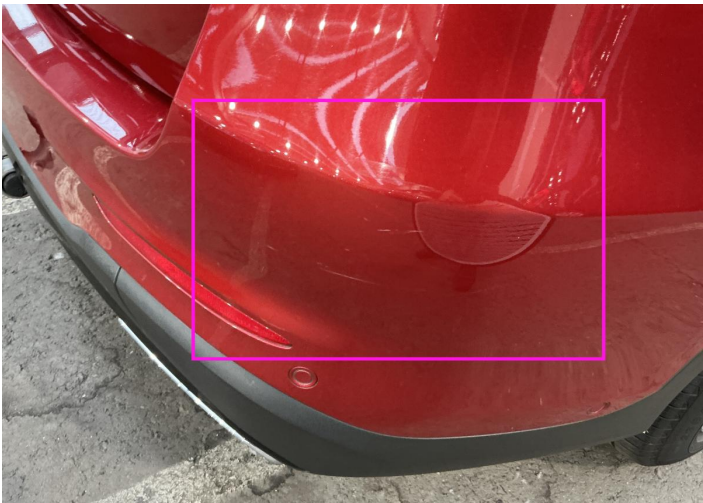
3. Fender / Front Right  
Paint / Scratch / Scuff -



4. Door / Back Right  
Paint / Scratch / Scuff -



5. Pillar / Back Right  
Paint / Scratch / Scuff -

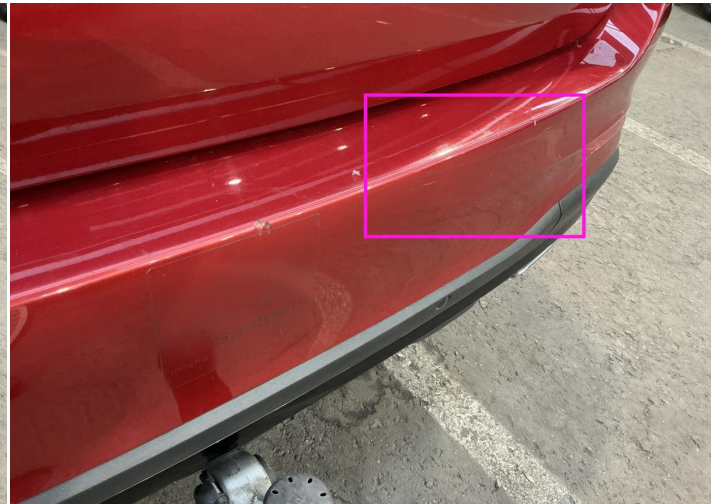


6. Bumper / Back  
Paint / Scratch / Scuff -

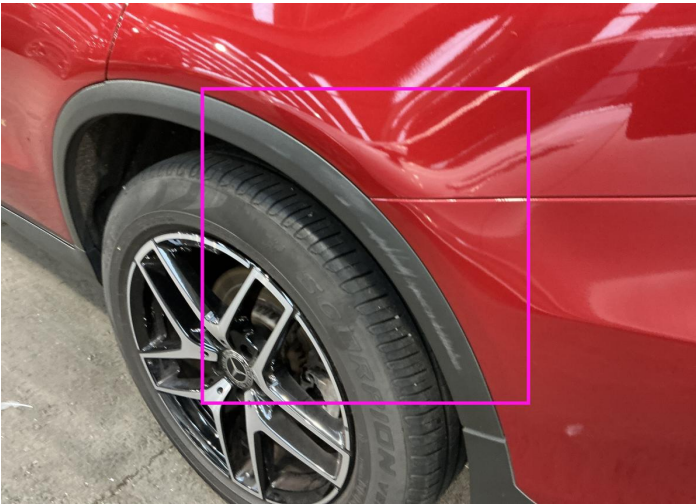




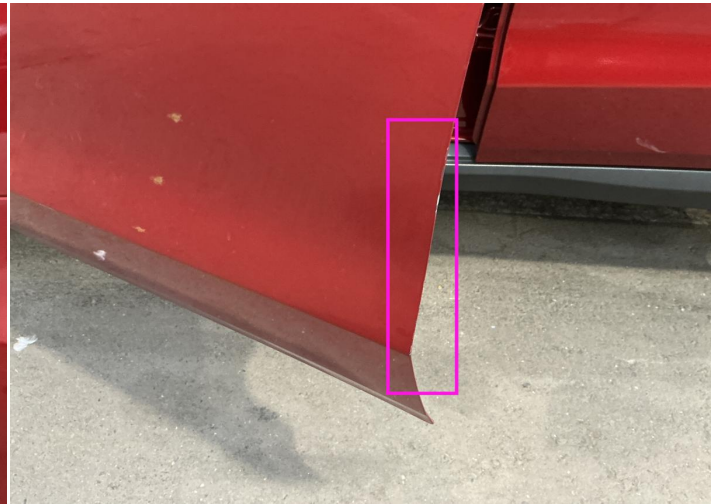
7. Bumper / Back  
Bodywork / Breakage -



8. Bumper / Back  
Paint / Scratch / Scuff -



9. Fender / Back Left  
Paint / Scratch / Scuff -



10. Door / Front Left  
Paint / Scratch / Scuff -



## Mechanical Condition

### Control Lights

ABS Warning Light	✓	ESP Fault/Traction Control Malfunction Light	✓
Diesel Particulate Filter Light	✓	Airbag Warning Light	✓
Oil Pressure Warning Light	✓	Brake Warning Light	✓
Power Steering Warning Light	✓	Alternator / Battery	✓
All - wheel Drive	✓	No Dashboard Lights	✓
Display Defect	✓	Service Light	✓
Tire Pressure Monitoring System	✓		

### Engine

Engine Status / EML	✓	Engine Leak Visible	✓
Engine Starts	✓		

### Gearbox

Gear Box	✓
----------	---

### Levels

Brakes Fluid	NA	Coolant Fluid	✓
--------------	----	---------------	---

### Equipments Test

Main & Spare Keys Functioning	✓	Electric Windows	✓
Navigation System	✓	Parking Sensors / Cameras Functioning	✓
AC / Heating System	✓		

Test Drive Inspection

Steering Wheel			
Steering   Noise / Anomaly		✓	
Engine			
Engine Noise	✓	The Gears Scratch / Skip / Abnormal Operation	✓
Fume Quantity	✓	Power Loss	✓
Brake			
Brake System Anomaly		✓	
General			
Test Driven Status		✓	
✓ <i>No troubles detected, good condition or correct tests, according to vehicle age and mileage</i>			
! <i>Damages or malfunction detected that requires repairs by the buyer</i>			
NA <i>Not applicable</i>			
= <i>Not tested</i>			

Disclaimer

Please also note the "UserGuide condition report", which shows the scope of the vehicle description.

[User Guide](#)