



MERCEDES-BENZ GLC
GLC 220 d 4Matic 9G-TRONIC

VIN NO WDC2539051F497348
Registration Number 051F497348



MOT Date	Number of Owners	Number of Keys	Odometer Reading
2025-08-01	2	2	81719 km
Last Service	Last Service Mileage	First Registration Date	Country First Registered
-	-	2018-07-23	Germany

Inspection Report Summary

Customer	BCA Online	Report Number	P20250925124203
Inspection Date / Place	2025-09-30 / HARTMANN Compound-Professionals GmbH Dorfmark	Cosmetic Grade	2

Vehicle Summary

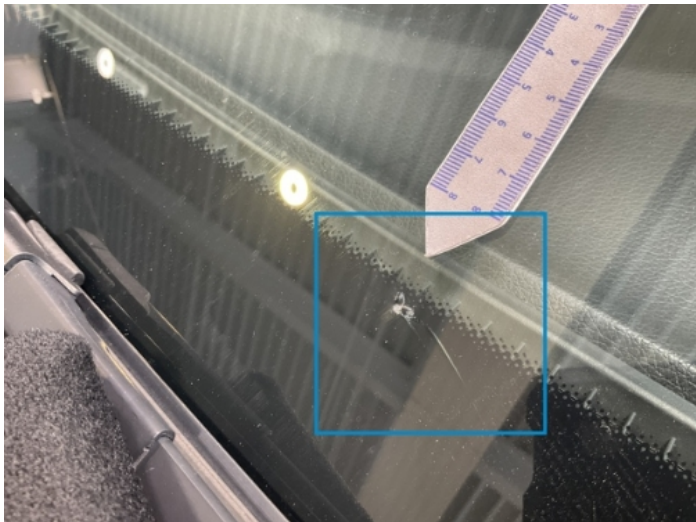
Vehicle Condition	Runner	VAT Type	Margin
Fuel Type	Diesel	Road Worthy	Yes
Colour	White	Engine Size (cc)	2143
Engine Size	2.1	No of Doors	5
Body Type	SUV	Drive Train	All-Wheel-Drive permanent
Seat Colour		No of Seats	5
Seat Covering Name	Schwarz	Seat Covering	Cloth/Synthetic Leather
Charging Cables		NEDC CO2 Rating (q/km)	156
Gearbox Type	Automatic		

Vehicle History & Documents

Service Book Available	Missing	Next Service Mileage	km
Previous Usage		Imported	No
Manufacturer Warrenty			







Equipment

Tinted Glass	USB Socket	Alloys wheels	Bluetooth telephone interface
Diesel particulate filter	Remote adjusting wing mirrors	Reversing Camera	Satellite navigation
Sunroof	Central locking	Electrictailgate	LED Headlamps
Rain sensitive windscreen wipers	Tow ball	Airbag Status	Anti-lock braking
Cruise control	Front parking sensors	Remote central locking	Roof rails
Stability control	CD Player	Electrically folding wing mirrors	Leather steering wheel
Radio	Rear parking sensors		

Equipment Details

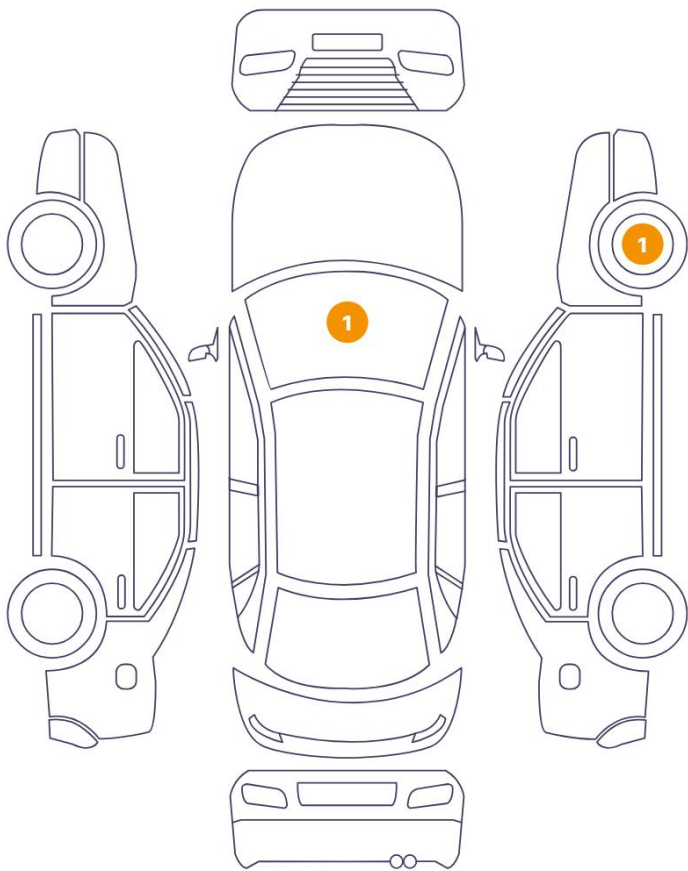
Tow Ball Type	Electronic	Air Conditioning	Dual Zone Climate Control
Alloy Wheel Size	20	Seat Heating	Front
Sunroof Type	Opening Panoramic		

Wheels & Tyres

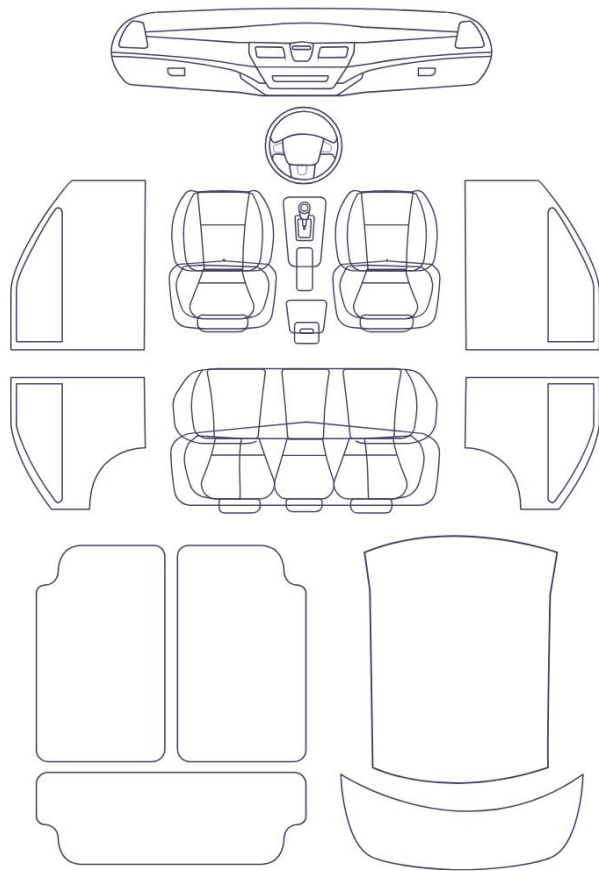
Right Front Tyre Depth	4	Left Front Tyre Depth	4
Right Rear Tyre Depth	5	Left Rear Tyre Depth	5

Cosmetic Damage

2 Damages



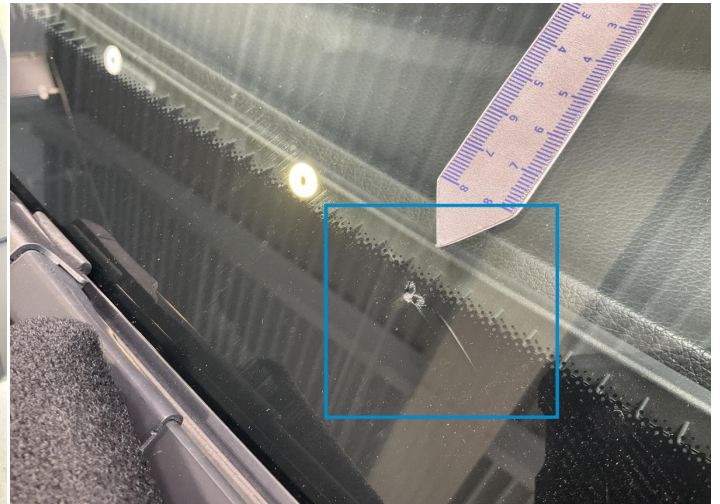
0 Damages



Component		Damage	Comments
1	Rim / Front Right	Out of Bodywork / Scratch	
2	Windshield / Front	Glass Break	



1. Rim / Front Right
Out of Bodywork / Scratch -



2. Windshield / Front
Glass Break -

Mechanical Condition

Control Lights

Display Defect	✓	Service Light	!
ABS Warning Light	✓	ESP Fault/Traction Control Malfunction Light	✓
Diesel Particulate Filter Light	✓	Airbag Warning Light	✓
Oil Pressure Warning Light	✓	Brake Warning Light	✓
Alternator / Battery	✓	No Dashboard Lights	✓
Tire Pressure Monitoring System	✓		

Equipments Test

Central Locking	✓	Main & Spare Keys Functioning	✓
Electric Windows	✓	Navigation System	✓
Parking Sensors / Cameras Functioning	✓	AC / Heating System	✓
Other Equipments	✓		

Engine

Engine Status / EML	✓	Engine Leak Visible	✓
Engine Starts	✓		

Levels

Brakes Fluid	✓	Coolant Fluid	✓
--------------	---	---------------	---

Test Drive Inspection

Steering Wheel

Steering | Noise / Anomaly

Engine

Engine Noise The Gears Scratch / Skip / Abnormal Operation

Fume Quantity Power Loss

Brake

Brake System Anomaly

General

Test Driven Status

- No troubles detected, good condition or correct tests, according to vehicle age and mileage
- Damages or malfunction detected that requires repairs by the buyer
- Not applicable
- Not tested

Disclaimer

Please also note the "UserGuide condition report", which shows the scope of the vehicle description. [User Guide](#)