



MERCEDES Classe GLK-204 Diesel
GLK 220 cdi Sport (BlueEff) 4matic '12

VIN NO WDC2049841G283457
Registration Number ET883JJ



MOT Date	Number of Owners	Number of Keys	Odometer Reading
2024-01-08	-	-	144132 km
Last Service	Last Service Mileage	First Registration Date	Country First Registered
-	-	2014-01-28	Italy

Inspection Report Summary

Customer	BCA Lodi	Report Number	P20250917143806
Inspection Date / Place	2025-09-17 / BCA Lodi	Cosmetic Grade	2

Vehicle Summary

Vehicle Condition	Runner	VAT Type	Margin
Fuel Type	Diesel	Gearbox Type	
Colour	Brown	Engine Size (cc)	2143
Engine Size	2.1	No of Doors	5
Body Type	SUV	Drive Train	All-Wheel-Drive
Seat Colour	Beige	No of Seats	5
Seat Covering Name		Seat Covering	Leather
Charging Cables		WLTP CO2 Emissions	

Vehicle History & Documents

Service Book Available	-	Next Service Mileage	km
Previous Usage	Normal Use	Imported	No
Manufacturer Warrenty			







Equipment

Central locking	Rear parking sensors	Digital Radio	Front parking sensors
Volante multifuncion	Remote adjusting wing mirrors	Cruise control	Trip Computer
Stability control	Power assisted steering	Alloys wheels	Electrically folding wing mirrors
Satellite navigation	Parcel Shef	Remote central locking	Traction control
Tyre Mobility Kit			

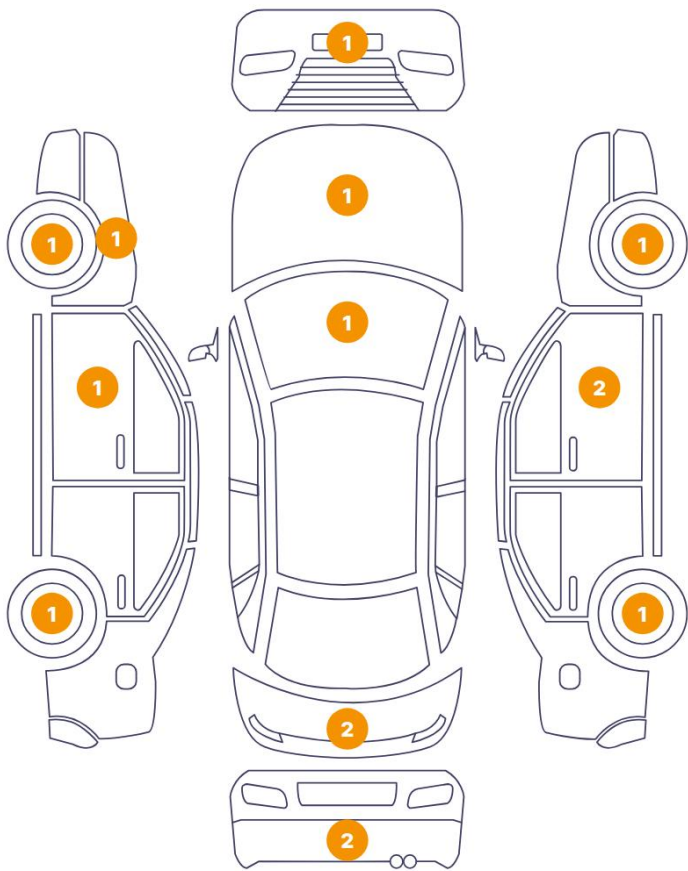
Wheels & Tyres

Mounted Tires

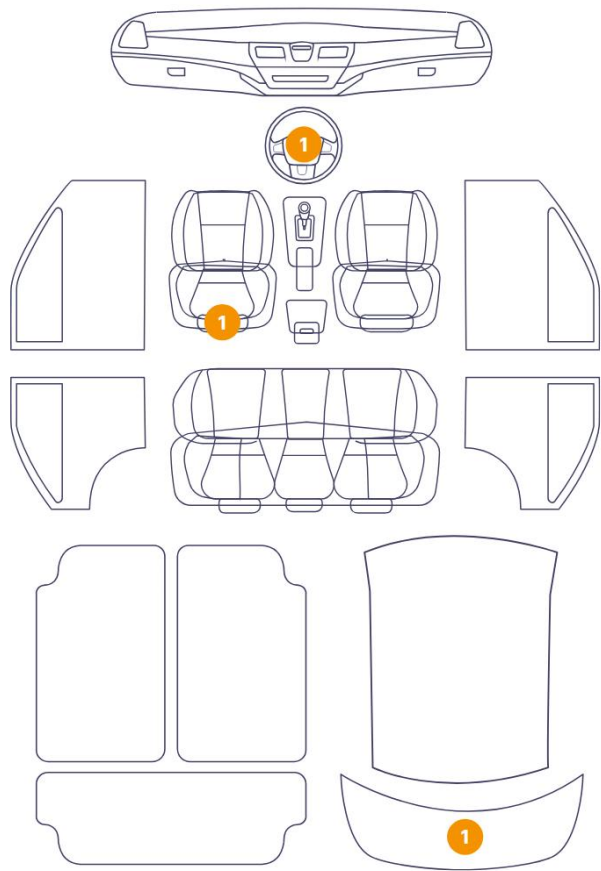
Tyre / Wheel Type	Winter	
	MICHELIN MICHELIN-PILOT ALPIN 5 SUV	235/50//R19 - 103V / 1 mm
	MICHELIN MICHELIN-PILOT ALPIN 5 SUV	235/50//R19 - 103V / 1 mm
	MICHELIN MICHELIN-PILOT ALPIN 5 SUV	235/50//R19 - 103V / 2 mm
	MICHELIN MICHELIN-PILOT ALPIN 5 SUV	235/50//R19 - 103V / 2 mm

Cosmetic Damage

15 Danni



3 Danni

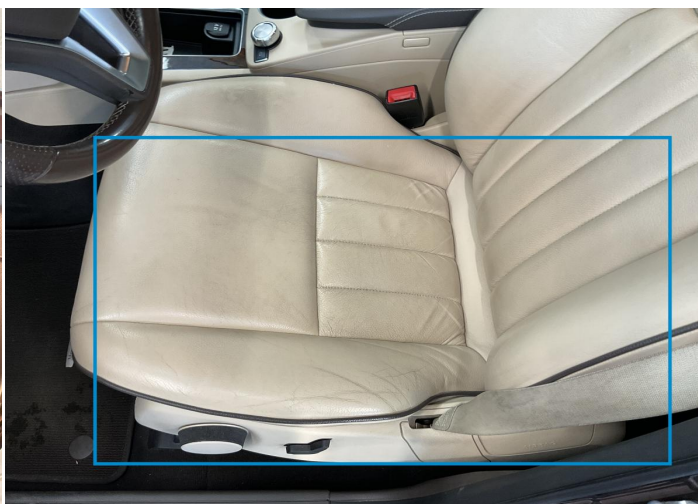


Component		Damage	Comments
1	Tailgate Upholstery / Back	Interior / Scratched	
2	Seat / Front Left	Interior / Worn - out	
3	Steering Wheel / Front	Interior / Worn - out	
4	Rim / Front Left	Out of Bodywork / Scratch	
5	Fender / Front Left	Bodywork / Poor Previous Repair	
6	Door / Front Left	Paint / Scratch / Line	
7	Rim / Back Left	Out of Bodywork / Scratch	
8	Bumper / Back	Paint / Scratch / Scuff	
9	Tailgate	Bodywork / Poor Previous Repair	
10	Rim / Back Right	Out of Bodywork / Scratch	
11	Door / Front Right	Paint / Scratch / Line	
12	Mirror Shell / Front Right	Paint / Scratch / Line	

13	Rim / Front Right	Out of Bodywork / Scratch
14	Windshield / Front	Glass Break / Impact
15	Hood	Paint / Chipping
16	Bumper / Front	Paint / Chipping
17	Fog Light / Back Right	Glass Break
18	Spoiler / Back	Paint / Poor Previous Repair



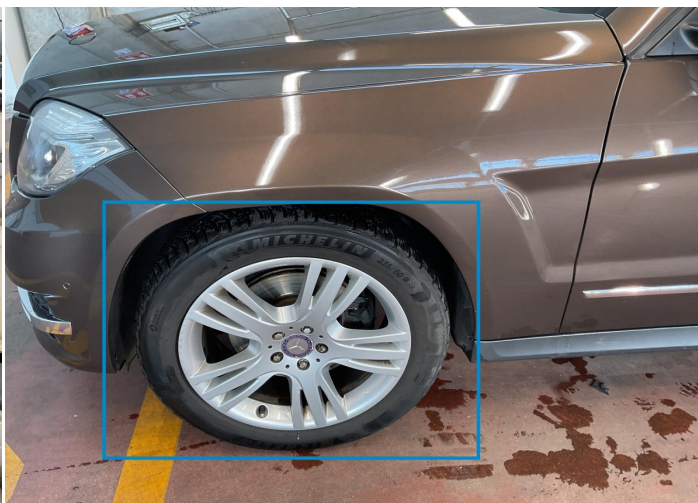
1. Tailgate Upholstery / Back
Interior / Scratched -



2. Seat / Front Left
Interior / Worn - out -



3. Steering Wheel / Front
Interior / Worn - out -



4. Rim / Front Left
Out of Bodywork / Scratch -



5. Fender / Front Left
Bodywork / Poor Previous Repair -



6. Door / Front Left
Paint / Scratch / Line -



7. Rim / Back Left
Out of Bodywork / Scratch -



8. Bumper / Back
Paint / Scratch / Scuff -



9. Tailgate
Bodywork / Poor Previous Repair -



10. Rim / Back Right
Out of Bodywork / Scratch -



11. Door / Front Right
Paint / Scratch / Line -



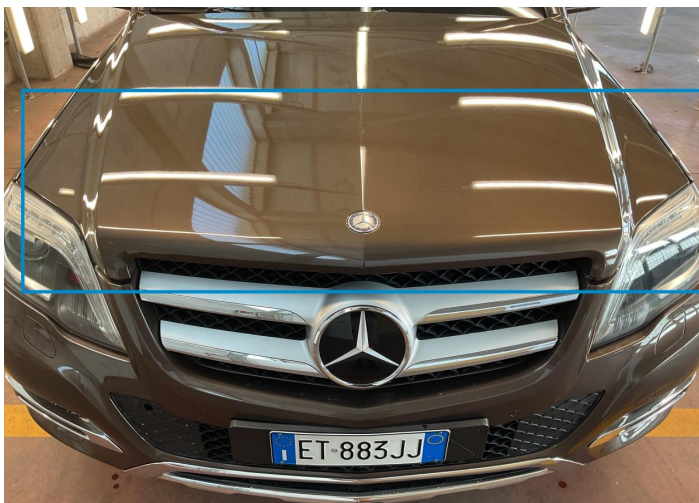
12. Mirror Shell / Front Right
Paint / Scratch / Line -



13. Rim / Front Right
Out of Bodywork / Scratch -



14. Windshield / Front
Glass Break / Impact -



15. Hood
Paint / Chipping -



16. Bumper / Front
Paint / Chipping -



17. Fog Light / Back Right
Glass Break -



18. Spoiler / Back
Paint / Poor Previous Repair -

Mechanical Condition

Engine

Engine Starts	✓	Vehicle Start - up	✓
Engine Leak Visible	✓		

Equipments Test

AC / Heating System	✓	Other Equipments	✓
---------------------	---	------------------	---

Clutch

Clutch Functioning	✓
--------------------	---

Levels

Brakes Fluid	✓	Coolant Fluid	✓
--------------	---	---------------	---

Test Drive Inspection

Other Checks

Steering	✓	Brakes	✓
Suspension	✓		

Equipments Test

Steering Noise / Anomaly	✓
----------------------------	---

Engine

Power Loss	✓	Fume Quantity	✓
Engine Noise	✓		

Gearbox

Manual Gearbox	✓
----------------	---

General

Test Driven Status	✓
--------------------	---

✓ **No troubles detected, good condition or correct tests, according to vehicle age and mileage**

! **Damages or malfunction detected that requires repairs by the buyer**

NA **Not applicable**

☐ **Not tested**