



MERCEDES-BENZ GLA

GLA 200 7G-DCT

VIN NO WDC1569431J110244
Registration Number 431J110244



MOT Date	Number of Owners	Number of Keys	Odometer Reading
2026-02-01	3	2	46478 km
Last Service	Last Service Mileage	First Registration Date	Country First Registered
-	-	2015-02-02	Germany

Inspection Report Summary

Customer	BCA Online	Report Number	P20250930134355
Inspection Date / Place	2025-09-30 / ARS Altmann AG Riedstadt	Cosmetic Grade	3

Vehicle Summary

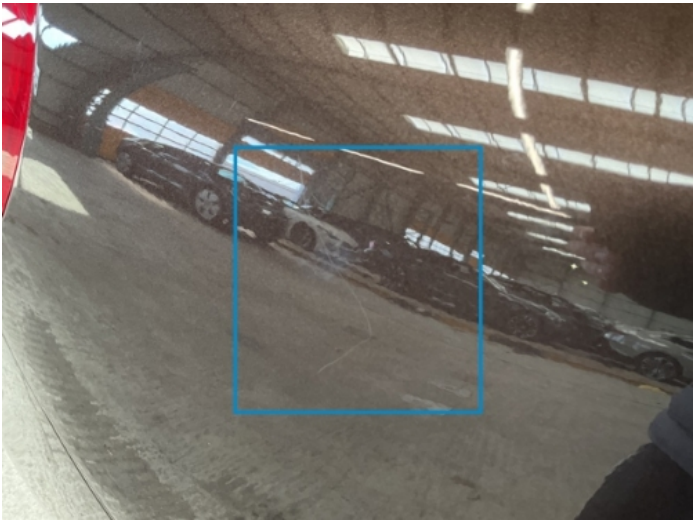
Vehicle Condition	Runner	VAT Type	Margin
Fuel Type	Petrol	Road Worthy	Yes
Colour	Brown	Engine Size (cc)	1595
Engine Size	1.6	No of Doors	5
Body Type	SUV	Drive Train	Front
Seat Colour		No of Seats	5
Seat Covering Name	Schwarz	Seat Covering	Cloth/Synthetic Leather
Charging Cables		NEDC CO2 Rating (q/km)	134
Gearbox Type	Automatic		

Vehicle History & Documents

Service Book Available	Missing	Next Service Mileage	km
Previous Usage		Imported	No
Manufacturer Warrenty			







Equipment

Tinted Glass	USB Socket	Alloys wheels	Bi Xenon Headlamps
Cruise control	Headlamp wash/wipe	Remote adjusting wing mirrors	Reversing Camera
Satellite navigation	Stability control	Central locking	Electric tailgate
Radio	Rear parking sensors	Trip Computer	Airbag Status
Anti-lock braking	Bluetooth telephone interface	Front parking sensors	Heated wing mirrors
Remote central locking	Roof rails	Split folding rear seats	CD Player
Electrically folding wing mirrors	Leather steering wheel	Rain sensitive windscreen wipers	

Equipment Details

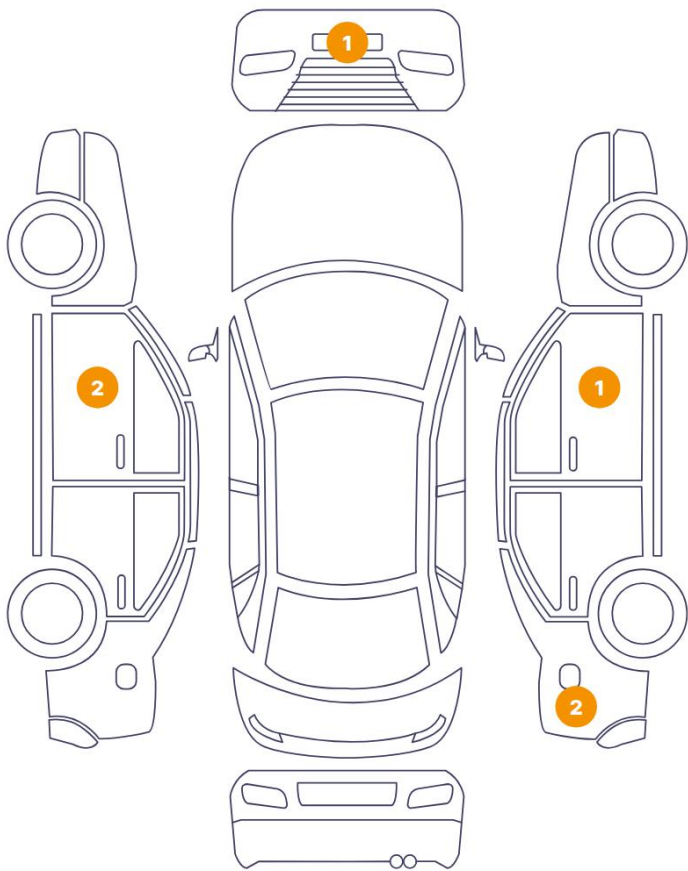
Air Conditioning	Yes	Alloy Wheel Size	18
Satellite Navigation	BMP	Seat Heating	Front

Wheels & Tyres

Right Front Tyre Depth	8	Left Front Tyre Depth	8
Right Rear Tyre Depth	9	Left Rear Tyre Depth	9

Cosmetic Damage

6 Schäden



0 Schäden



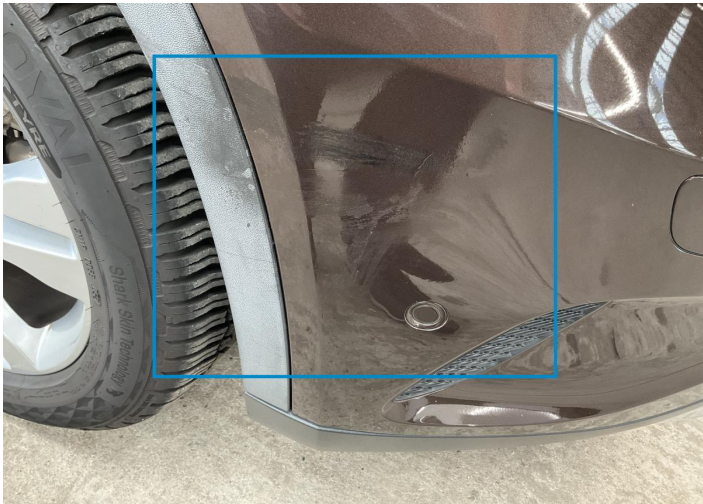
Component		Damage	Comments
1	Door / Front Left	Paint / Scratch / Scuff	
2	Door / Front Left	Paint / Scratch / Scuff	
3	Bumper / Front	Paint / Chemical Damage	
4	Door / Front Right	Paint / Poor Previous Repair	
5	Side Panel / Back Right	Paint / Poor Previous Repair	
6	Side Panel / Back Right	Paint / Scratch / Scuff	



1. Door / Front Left
Paint / Scratch / Scuff -



2. Door / Front Left
Paint / Scratch / Scuff -



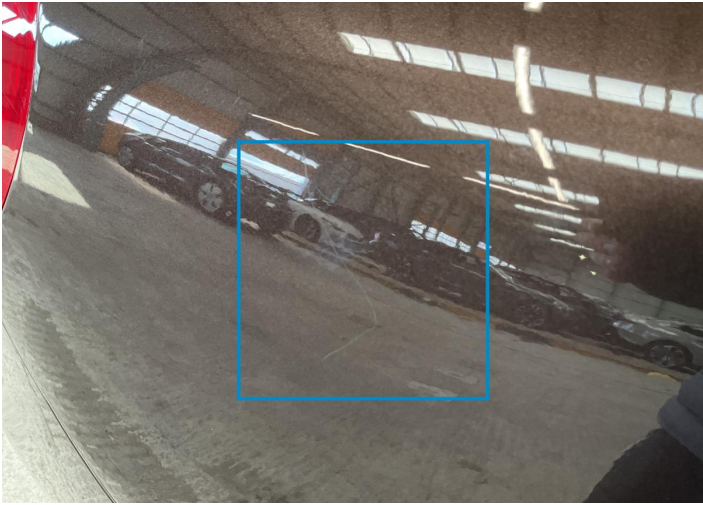
3. Bumper / Front
Paint / Chemical Damage -



4. Door / Front Right
Paint / Poor Previous Repair -



5. Side Panel / Back Right
Paint / Poor Previous Repair -



6. Side Panel / Back Right
Paint / Scratch / Scuff -

Mechanical Condition

Control Lights

ABS Warning Light	✓	ESP Fault/Traction Control Malfunction Light	✓
Airbag Warning Light	✓	Oil Pressure Warning Light	✓
Brake Warning Light	✓	Power Steering Warning Light	✓
Alternator / Battery	✓	No Dashboard Lights	✓
Display Defect	✓	Service Light	✓
Tire Pressure Monitoring System	✓		

Engine

Engine Status / EML	✓	Engine Leak Visible	✓
Engine Starts	✓		

Gearbox

Gear Box	✓
----------	---

Equipments Test

Audio Equipment	✓	AC / Heating System	✓
Central Locking	✓	Main & Spare Keys Functioning	✓
Electric Windows	✓	Navigation System	✓
Parking Sensors / Cameras Functioning	✓		

Levels

Brakes Fluid	✓	Coolant Fluid	✓
--------------	---	---------------	---

Test Drive Inspection

Steering Wheel

Steering | Noise / Anomaly

Engine

Engine Noise The Gears Scratch / Skip / Abnormal Operation

Fume Quantity Power Loss

Brake

Brake System Anomaly

General

Test Driven Status

- No troubles detected, good condition or correct tests, according to vehicle age and mileage
- Damages or malfunction detected that requires repairs by the buyer
- Not applicable
- Not tested

Disclaimer

Please also note the "UserGuide condition report", which shows the scope of the vehicle description. [User Guide](#)