



MERCEDES-BENZ E-Klasse

E 220 T CDI Automatik

VIN NO WDB2112081B260673
Registration Number 081B260673



MOT Date

2026-02-01

Last Service



Number of Owners

3

Last Service Mileage



Number of Keys

2

First Registration Date

2007-11-26

Odometer Reading

363314 km

Country First Registered

Germany

Inspection Report Summary

Customer	BCA Online	Report Number	P20250919104036
Inspection Date / Place	2025-09-19 / BCA Neuss	Cosmetic Grade	3

Vehicle Summary

Vehicle Condition	Runner	VAT Type	Margin
Fuel Type	Diesel	Road Worthy	Yes
Colour	Silver	Engine Size (cc)	2148
Engine Size	2.1	No of Doors	5
Body Type	Stationwagon / Estate	Drive Train	Rear
Seat Colour		No of Seats	5
Seat Covering Name		Seat Covering	Cloth
Charging Cables		NEDC CO2 Rating (q/km)	194
Gearbox Type	Automatic		

Vehicle History & Documents

Service Book Available	Missing	Next Service Mileage	km
Previous Usage		Imported	No
Manufacturer Warrenty			







Equipment

Tow ball	Anti-lock braking	Diesel particulate filter	Remote adjusting wing mirrors
Roof rails	Stability control	Central locking	Radio
Rear parking sensors	Alloys wheels	Cruise control	Front parking sensors
Remote central locking	Satellite navigation	CD Player	Leather steering wheel
Rain sensitive windscreen wipers			

Equipment Details

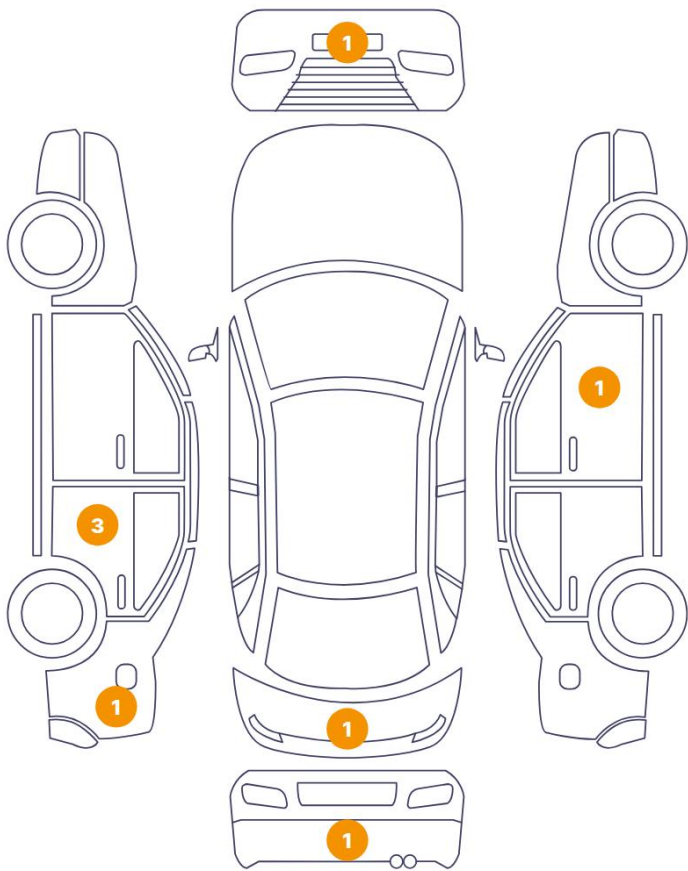
Tow Ball Type	Pivoted	Air Conditioning	Dual Zone Climate Control
Alloy Wheel Size	16	Satellite Navigation	Navi CD fehlt
Seat Heating	Front		

Wheels & Tyres

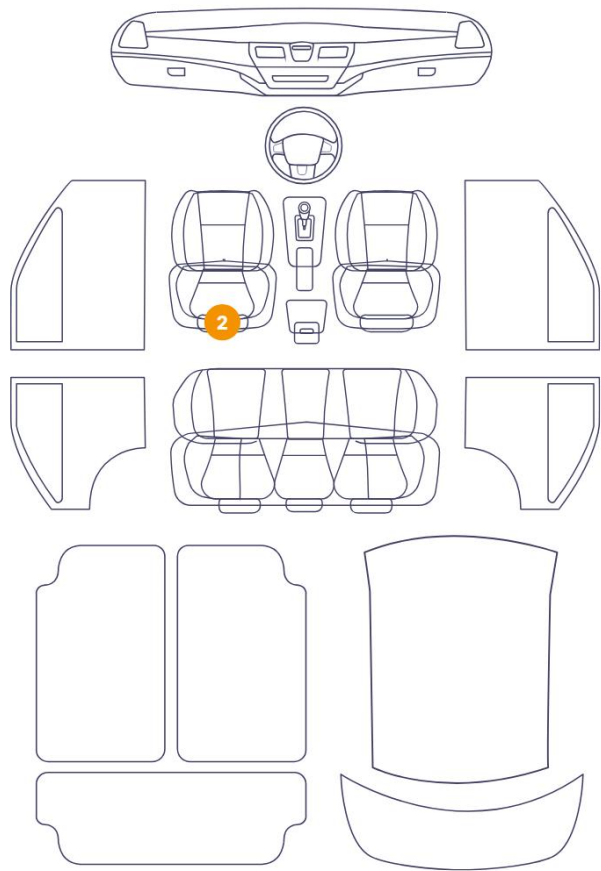
Right Front Tyre Depth	5	Left Front Tyre Depth	5
Right Rear Tyre Depth	2	Left Rear Tyre Depth	2

Cosmetic Damage

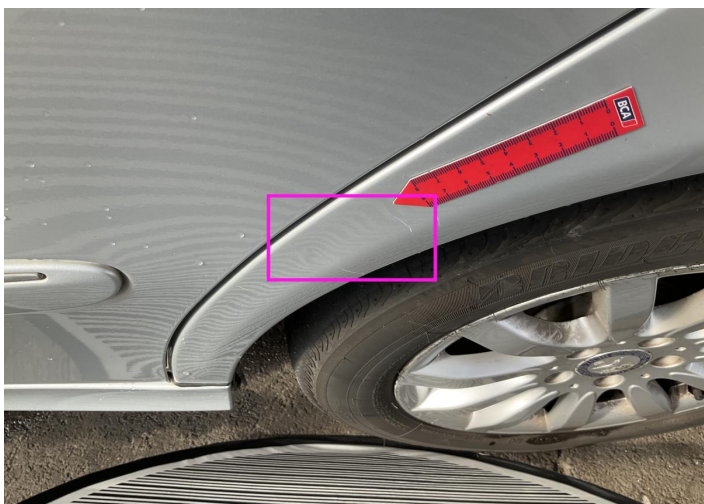
8 Schäden



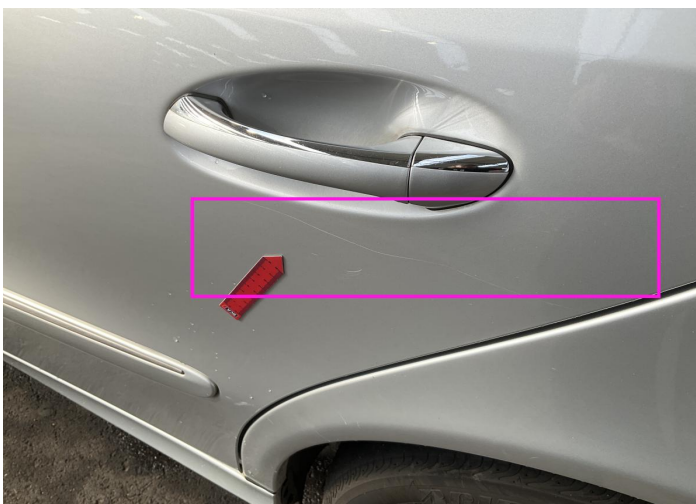
2 Schäden



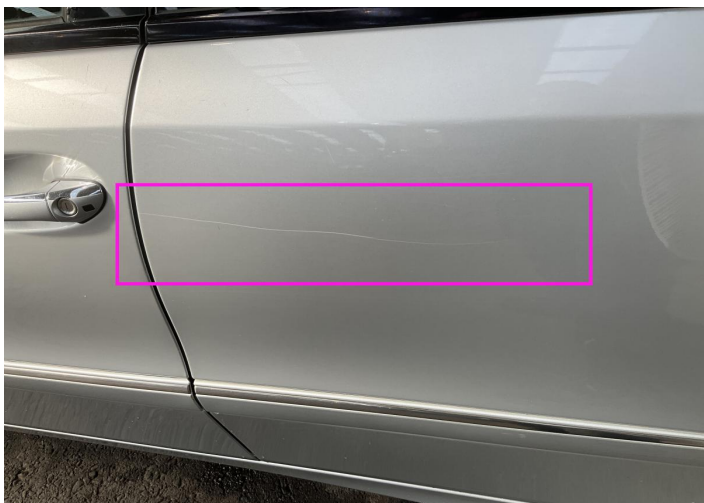
Component		Damage	Comments
1	Fender / Back Left	Bodywork / Dent / Dent	
2	Door / Back Left	Paint / Scratch / Scuff	
3	Door / Back Left	Paint / Scratch / Scuff	
4	Door / Back Left	Paint / Scratch / Scuff	
5	Mirror Repeater / Right	Glass Break	
6	Corner Bumper / Back Left	Paint / Scratch / Scuff	
7	Seat / Front Left	Interior / Broken	
8	Seat / Front Left	Interior / Burn	
9	Tailgate	Bodywork / Dent / Dent	
10	Corner Bumper / Front Right	Paint / Scratch / Scuff	



1. Fender / Back Left
Bodywork / Dent / Dent -



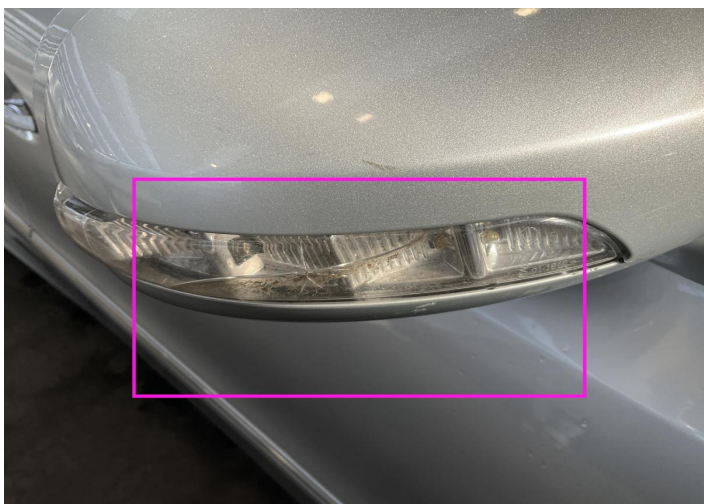
2. Door / Back Left
Paint / Scratch / Scuff -



3. Door / Back Left
Paint / Scratch / Scuff -



4. Door / Back Left
Paint / Scratch / Scuff -



5. Mirror Repeater / Right
Glass Break -



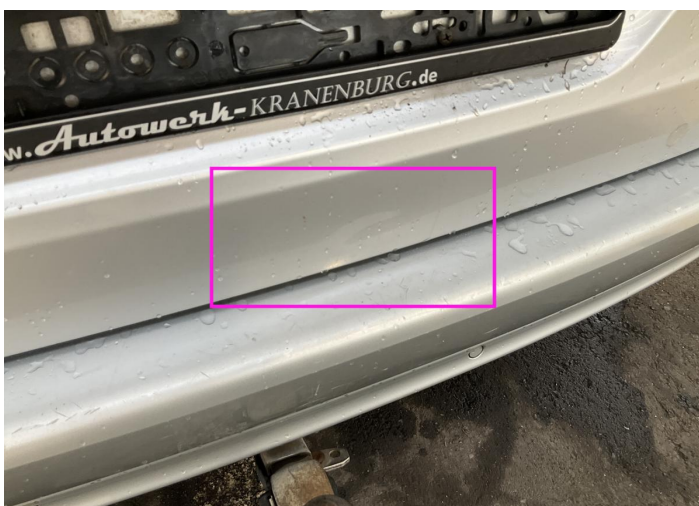
6. Corner Bumper / Back Left
Paint / Scratch / Scuff -



7. Seat / Front Left
Interior / Broken -



8. Seat / Front Left
Interior / Burn -



9. Tailgate
Bodywork / Dent / Dent -



10. Corner Bumper / Front Right
Paint / Scratch / Scuff -

Mechanical Condition

Control Lights

ABS Warning Light	✓	ESP Fault/Traction Control Malfunction Light	✓
Diesel Particulate Filter Light	✓	Airbag Warning Light	✓
Oil Pressure Warning Light	✓	Brake Warning Light	!
Power Steering Warning Light	✓	Alternator / Battery	✓
No Dashboard Lights	✓	Display Defect	✓
Service Light	✓	Tire Pressure Monitoring System	✓

Engine

Engine Status / EML	✓	Engine Leak Visible	✓
Engine Starts	✓		

Gearbox

Gear Box	✓
----------	---

Equipments Test

Main & Spare Keys Functioning	✓	Navigation System	NA
Parking Sensors / Cameras Functioning	✓		

Levels

Brakes Fluid	NA	Coolant Fluid	✓
--------------	----	---------------	---

Test Drive Inspection

Engine			
Engine Noise	✓	Fume Quantity	✓
Power Loss	✓	The Gears Scratch / Skip / Abnormal Operation	✓
Brake			
Brake System Anomaly	!		
Steering Wheel			
Steering Noise / Anomaly	✓		
General			
Test Driven Status	✓		
✓ No troubles detected, good condition or correct tests, according to vehicle age and mileage			
! Damages or malfunction detected that requires repairs by the buyer			
NA Not applicable			
☐ Not tested			

Disclaimer

Please also note the "UserGuide condition report", which shows the scope of the vehicle description.

[User Guide](#)