



# BMW X4 X4M Competition

VIN NO WBSUJ01060LB00384  
Registration Number 060LB00384



MOT Date

2027-03-01

Last Service

2025-05-09

Number of Owners

1

Last Service Mileage

184062

Number of Keys

2

First Registration Date

2020-03-03

Odometer Reading

194828 km

Country First Registered

Germany

## Inspection Report Summary

Customer	BCA Online	Report Number	P20250924100121
Inspection Date / Place	2025-09-24 / BCA Oberndorf	Cosmetic Grade	2

## Vehicle Summary

Vehicle Condition	Runner	VAT Type	Qualifying
Fuel Type	Petrol	Road Worthy	Yes
Colour	Grey	Engine Size (cc)	2993
Engine Size	3.0	No of Doors	5
Body Type	SUV	Drive Train	All-Wheel-Drive permanent
Seat Colour		No of Seats	5
Seat Covering Name	Schwarz/gelb	Seat Covering	Leather
Charging Cables		NEDC CO2 Rating (q/km)	251
Gearbox Type	Automatic		

## Vehicle History & Documents

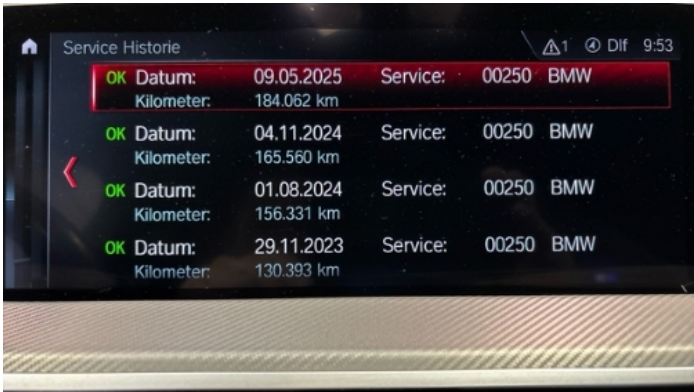
Service Book Available	Present	Next Service Mileage	km
Previous Usage		Imported	No
Manufacturer Warrenty			













## Equipment

Tinted Glass	Traffic sign recognition	USB Socket	Airbag Status
Ambient lighting	Anti-lock braking	Blind spot assist	Cruise control
Digital Radio	Front parking sensors	Heated wing mirrors	Remote central locking
Satellite navigation	Stability control	CD Player	Electrically adjustable seats
Electric tailgate	Lane assist	LED Headlamps	Rear parking sensors
Tow ball	Trip Computer	360° camera	Alloy wheels
Android Auto	Apple CarPlay	Bluetooth telephone interface	Diesel particulate filter
Digital dashboard	Head up Display	Remote adjusting wing mirrors	Roof rails
Split folding rear seats	Sunroof	Central locking	Electrically folding wing mirrors
Emergency brake assist	Leather steering wheel	Radio	

## Equipment Details

Tow Ball Type	Electronic	Air Conditioning	Three Zone Climate Control
Alloy Wheel Size	21	Seat Heating	Front
Sunroof Type	Opening Panoramic		

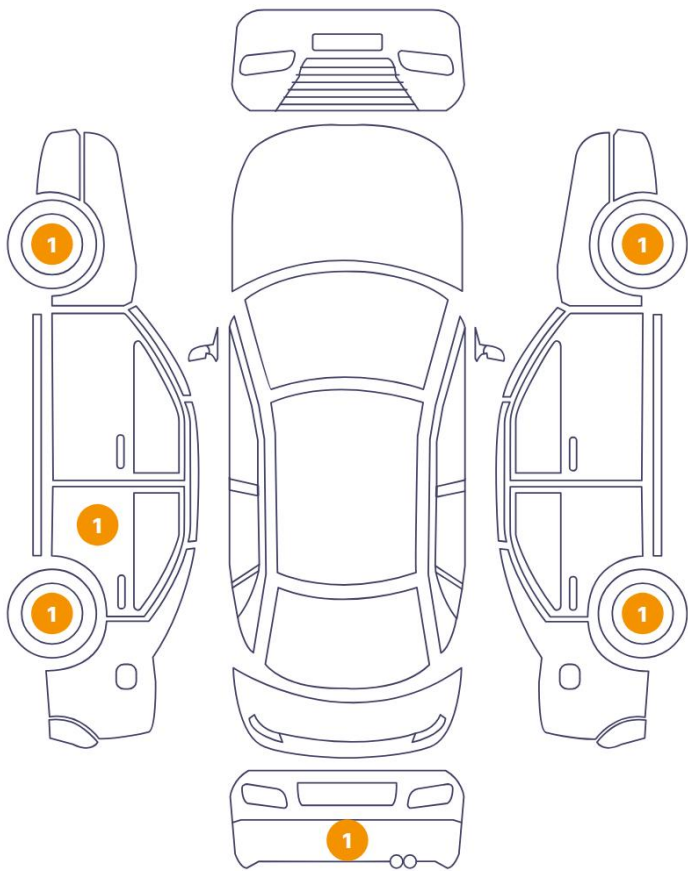
## Wheels & Tyres

Right Front Tyre Depth	5	Left Front Tyre Depth	5
Right Rear Tyre Depth	2	Left Rear Tyre Depth	2



Cosmetic Damage

6 Schäden



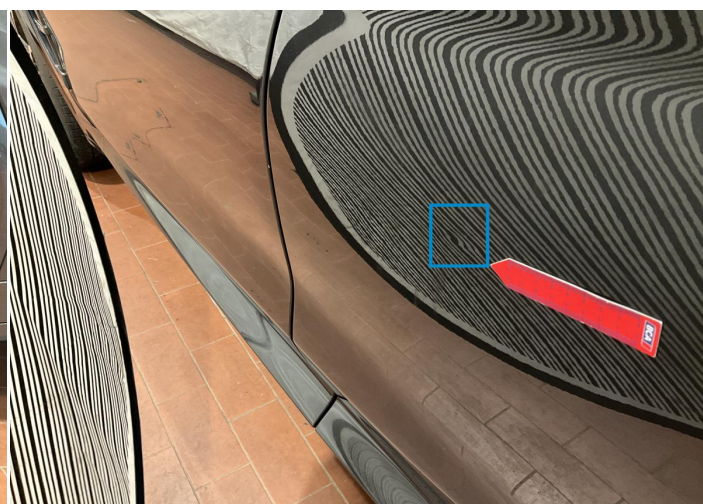
0 Schäden



Component		Damage	Comments
1	Rim / Front Left	Out of Bodywork / Scratch	
2	Door / Back Left	Bodywork / Dent / Dent	
3	Rim / Back Left	Out of Bodywork / Scratch	
4	Bumper / Back	Paint / Stone Chip	
5	Rim / Back Right	Out of Bodywork / Scratch	
6	Rim / Front Right	Out of Bodywork / Scratch	



1. Rim / Front Left  
Out of Bodywork / Scratch -



2. Door / Back Left  
Bodywork / Dent / Dent -



3. Rim / Back Left  
Out of Bodywork / Scratch -



4. Bumper / Back  
Paint / Stone Chip -



5. Rim / Back Right  
Out of Bodywork / Scratch -



6. Rim / Front Right  
Out of Bodywork / Scratch -



## Mechanical Condition

### Equipments Test

Central Locking	✓	Electric Windows	✓
Navigation System	✓	Audio Equipment	✓
AC / Heating System	✓	Main & Spare Keys Functioning	✓
Parking Sensors / Cameras Functioning	✓	Other Equipments	✓

### Control Lights

ABS Warning Light	✓	ESP Fault/Traction Control Malfunction Light	✓
Diesel Particulate Filter Light	✓	Airbag Warning Light	✓
Oil Pressure Warning Light	✓	Brake Warning Light	✓
Power Steering Warning Light	✓	Alternator / Battery	✓
No Dashboard Lights	✓	Display Defect	✓
Service Light	✓	Tire Pressure Monitoring System	✓

### Engine

Engine Status / EML	✓	Engine Leak Visible	✓
Engine Starts	✓		

### Gearbox

Gear Box	✓
----------	---

### Levels

Brakes Fluid	✓	Coolant Fluid	✓
--------------	---	---------------	---

Test Drive Inspection

Steering Wheel			
Steering   Noise / Anomaly		✔	
Engine			
Engine Noise	✔	The Gears Scratch / Skip / Abnormal Operation	✔
Fume Quantity	✔	Power Loss	✔
Brake			
Brake System Anomaly		✔	
General			
Test Driven Status		Not Performed	
✔ <i>No troubles detected, good condition or correct tests, according to vehicle age and mileage</i>			
❗ <i>Damages or malfunction detected that requires repairs by the buyer</i>			
NA <i>Not applicable</i>			
☐ <i>Not tested</i>			

Disclaimer

Please also note the "UserGuide condition report", which shows the scope of the vehicle description.

[User Guide](#)