



BMW X4

X4 xDrive30d Aut.

VIN NO WBAXX310200E94808
Registration Number 0200E94808



MOT Date

2025-07-01

Last Service

2023-07-18

Number of Owners

2

Last Service Mileage

148078

Number of Keys

2

First Registration Date

2014-07-16

Odometer Reading

160491 km

Country First Registered

Germany

Inspection Report Summary

Customer	BCA Online	Report Number	P20251007123834
Inspection Date / Place	2025-10-07 / BCA Oberndorf	Cosmetic Grade	3

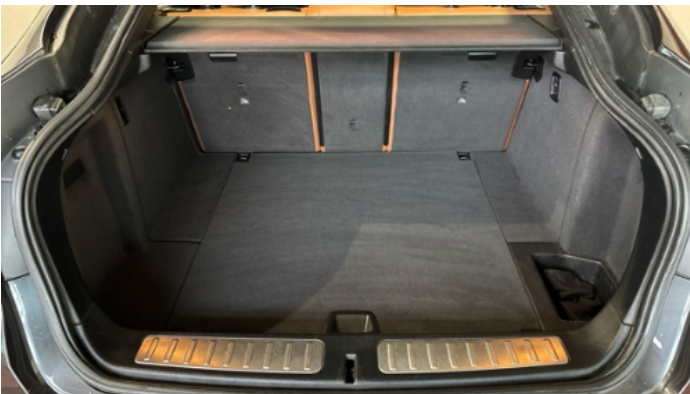
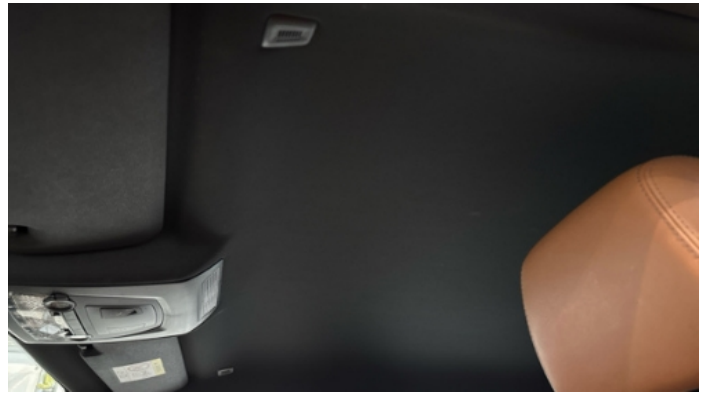
Vehicle Summary

Vehicle Condition	Runner	VAT Type	Margin
Fuel Type	Diesel	Road Worthy	Yes
Colour	Grey	Engine Size (cc)	2993
Engine Size	3.0	No of Doors	5
Body Type	SUV	Drive Train	All-Wheel-Drive permanent
Seat Colour		No of Seats	5
Seat Covering Name	Braun	Seat Covering	Leather
Charging Cables		NEDC CO2 Rating (q/km)	156
Gearbox Type	Automatic		

Vehicle History & Documents

Service Book Available	Present	Next Service Mileage	km
Previous Usage		Imported	No
Manufacturer Warrenty			







Equipment

Tow ball	Airbag Status	Ambientlighting	Auxiliary Socket
Cruise control	Digital Radio	Front parking sensors	Remote central locking
Split folding rear seats	Xenon headlamps	Central locking	Leather steering wheel
Rear parking sensors	USB Socket	Alloys wheels	Anti-lock braking
Bluetooth telephone interface	Diesel particulate filter	Front fog lamps	Remote adjusting wing mirrors
Satellite navigation	Stability control	CD Player	Electrictailgate
Radio			

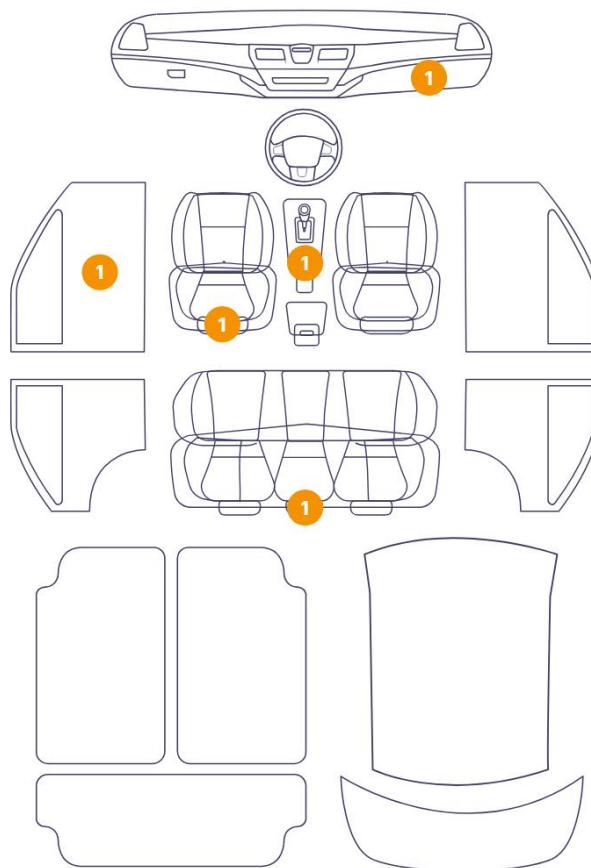
Equipment Details

Tow Ball Type	Detachable	Air Conditioning	Three Zone Climate Control
Alloy Wheel Size	20	Seat Heating	Front

Wheels & Tyres

Right Front Tyre Depth	5	Left Front Tyre Depth	5
Right Rear Tyre Depth	5	Left Rear Tyre Depth	5

5 Schäden



1

6/12 - Report Number P20251007123834

13 Door / Back Left

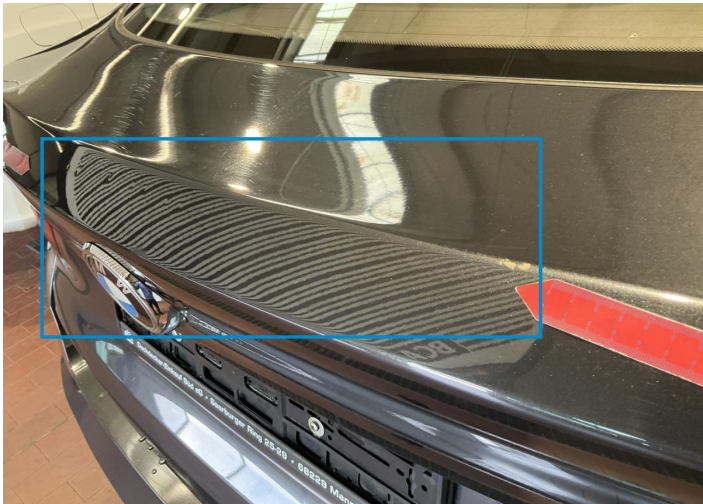
Paint / Stone Chip



1. Paint / Scratch / Scuff -



2. Panel Filling / Front Left Interior / Scratched -



3. Tailgate Bodywork / Dent / Dent -



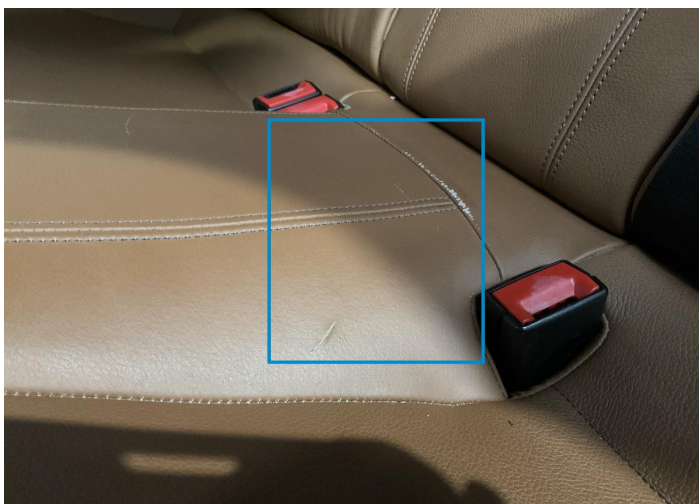
4. Glovebox Interior / Loose -



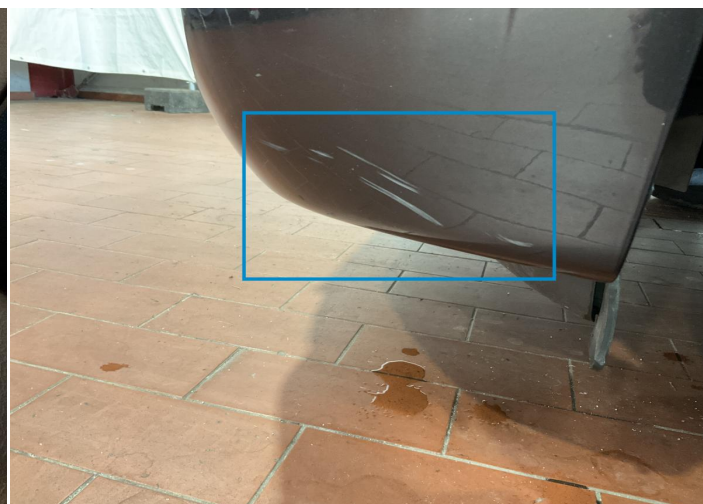
5. Seat Cushion / Front Left Interior / Ripped -



6. Corner Bumper / Front Right Paint / Scratch / Scuff -



7. Seat / Back Center
Interior / Ripped -



8. Corner Bumper / Front Left
Paint / Scratch / Scuff -



9. Gear Knob
Interior / Ripped -



10. Door / Front Left
Bodywork / Dent / Dent -



11. Wing Stick / Front Left
Missing Part -



12. Corner Bumper / Back Left
Paint / Stone Chip -



13. Door / Back Left
Paint / Stone Chip -

Mechanical Condition

Equipments Test

Central Locking	✓	Audio Equipment	✓
AC / Heating System	✓	Main & Spare Keys Functioning	✓
Electric Windows	✓	Navigation System	✓
Parking Sensors / Cameras Functioning	✓	Other Equipments	✓

Control Lights

ABS Warning Light	✓	ESP Fault/Traction Control Malfunction Light	✓
Diesel Particulate Filter Light	✓	Airbag Warning Light	✓
Oil Pressure Warning Light	✓	Brake Warning Light	✓
Power Steering Warning Light	✓	Alternator / Battery	✓
All - wheel Drive	✓	No Dashboard Lights	✓
Display Defect	✓	Service Light	!
Tire Pressure Monitoring System	✓		

Engine

Engine Status / EML	✓	Engine Leak Visible	✓
Engine Starts	✓		

Gearbox

Gear Box	✓
----------	---

Levels

Brakes Fluid	✓	Coolant Fluid	✓
--------------	---	---------------	---

Test Drive Inspection

Steering Wheel			
Steering Noise / Anomaly		✔	
Engine			
Engine Noise	✔	The Gears Scratch / Skip / Abnormal Operation	✔
Fume Quantity	✔	Power Loss	✔
Brake			
Brake System Anomaly		✔	
General			
Test Driven Status		Not Performed	
✔ <i>No troubles detected, good condition or correct tests, according to vehicle age and mileage</i>			
❗ <i>Damages or malfunction detected that requires repairs by the buyer</i>			
NA <i>Not applicable</i>			
☐ <i>Not tested</i>			

Disclaimer

Please also note the "UserGuide condition report", which shows the scope of the vehicle description.

[User Guide](#)