



## BMW X3 X3 xDrive20d

VIN NO WBAWY31050L619112  
Registration Number 050L619112



MOT Date

2025-12-01

Last Service

2020-03-11

Number of Owners

2

Last Service Mileage

116345

Number of Keys

2

First Registration Date

2012-12-03

Odometer Reading

212803 km

Country First Registered

Germany

### Inspection Report Summary

Customer	BCA Online	Report Number	P20251007105211
Inspection Date / Place	2025-10-07 / BCA Oberndorf	Cosmetic Grade	3

### Vehicle Summary

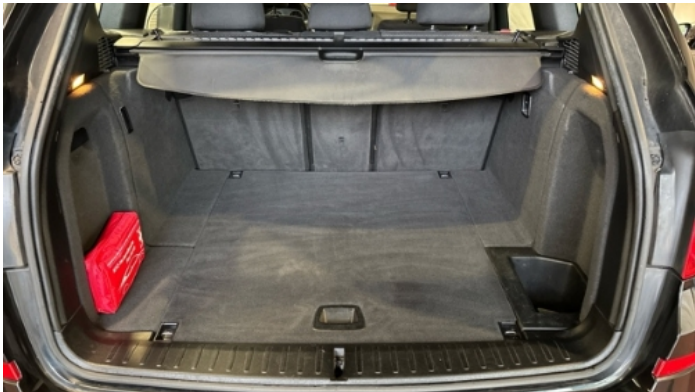
Vehicle Condition	Runner	VAT Type	Margin
Fuel Type	Diesel	Road Worthy	Yes
Colour	Black	Engine Size (cc)	1995
Engine Size	2.0	No of Doors	5
Body Type	SUV	Drive Train	All-Wheel-Drive permanent
Seat Colour		No of Seats	5
Seat Covering Name	Schwarz	Seat Covering	Cloth
Charging Cables		NEDC CO2 Rating (q/km)	149
Gearbox Type	Manual		

### Vehicle History & Documents

Service Book Available	Present	Next Service Mileage	km
Previous Usage		Imported	No
Manufacturer Warrenty			











Equipment

USB Socket	Alloys wheels	Auxiliary Socket	Cruise control
Front fog lamps	Remote adjusting wing mirrors	Roof rails	Split folding rear seats
CD Player	Leather steering wheel	Rear parking sensors	Airbag Status
Anti-lock braking	Bluetooth telephone interface	Diesel particulate filter	Front parking sensors
Remote central locking	Satellite navigation	Stability control	Central locking

Radio

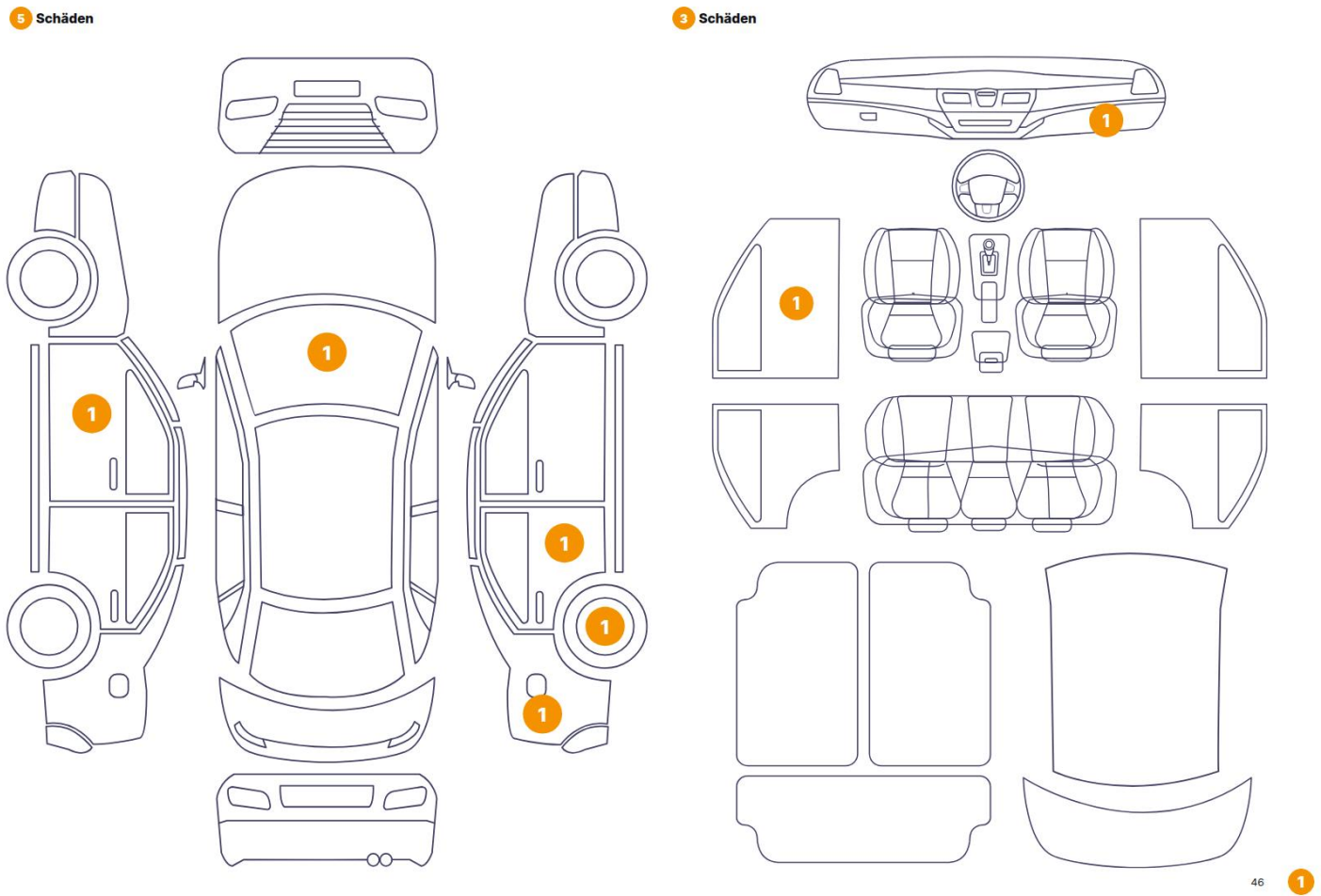
Equipment Details

Air Conditioning	Three Zone Climate Control	Alloy Wheel Size	17
Seat Heating	Front		

Wheels & Tyres

Right Front Tyre Depth	4	Left Front Tyre Depth	4
Right Rear Tyre Depth	4	Left Rear Tyre Depth	4

Cosmetic Damage



46

1

Component		Damage	Comments
1	Windshield Joint / Front	Bodywork / Breakage / Crack	
2	Glovebox	Interior / Loose	
3	Interior door handle Front left	Interior / Scratched	
4	Door / Front Left	Bodywork / Dent / Dent	
5	Other	Interior / Ripped	
6	Rim / Back Right	Paint / Stone Chip	
7	Fender / Back Right	Paint / Stone Chip	
8	Door / Back Right	Bodywork / Dent / Dent	





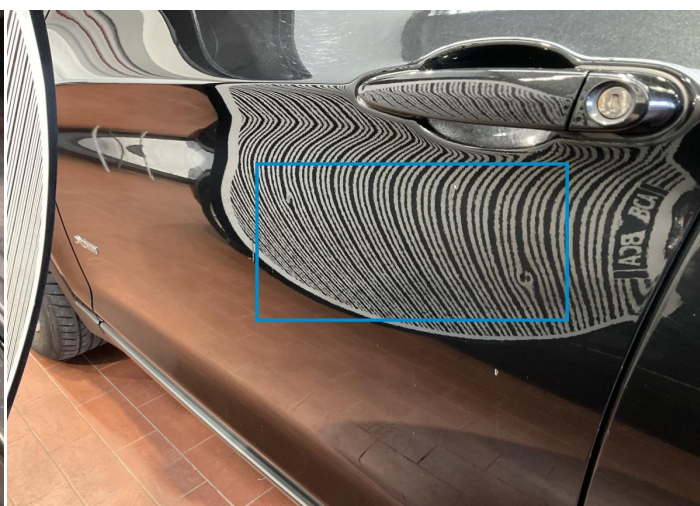
1. Windshield Joint / Front  
Bodywork / Breakage / Crack -



2. Glovebox  
Interior / Loose -



3. Interior door handle Front left  
Interior / Scratched -



4. Door / Front Left  
Bodywork / Dent / Dent -



5.  
Interior / Ripped -



6. Rim / Back Right  
Paint / Stone Chip -



7. Fender / Back Right  
Paint / Stone Chip -



8. Door / Back Right  
Bodywork / Dent / Dent -



## Mechanical Condition

### Equipments Test

Central Locking	✓	Audio Equipment	✓
AC / Heating System	✓	Main & Spare Keys Functioning	✓
Electric Windows	✓	Navigation System	✓
Parking Sensors / Cameras Functioning	✓	Other Equipments	✓

### Control Lights

ABS Warning Light	✓	ESP Fault/Traction Control Malfunction Light	✓
Diesel Particulate Filter Light	✓	Airbag Warning Light	✓
Oil Pressure Warning Light	✓	Brake Warning Light	✓
Power Steering Warning Light	✓	Alternator / Battery	✓
All - wheel Drive	✓	No Dashboard Lights	✓
Display Defect	✓	Service Light	✓

### Engine

Engine Status / EML	✓	Engine Leak Visible	⚠
Engine Starts	✓		

### Gearbox

Gear Box	✓
----------	---

### Levels

Brakes Fluid	✓	Coolant Fluid	✓
--------------	---	---------------	---

Test Drive Inspection

Steering Wheel

Steering | Noise / Anomaly

Engine

Engine Noise The Gears Scratch / Skip / Abnormal Operation

Fume Quantity Power Loss

Brake

Brake System Anomaly

Clutch

Clutch Functioning

General

Test Driven Status Not Performed

- No troubles detected, good condition or correct tests, according to vehicle age and mileage
- Damages or malfunction detected that requires repairs by the buyer
- Not applicable
- Not tested

Disclaimer

Please also note the "UserGuide condition report", which shows the scope of the vehicle description. [User Guide](#)