



BMW 3er
330d DPF Cabrio
VIN NO WBAWM51000PX61058
Registration Number 000PX61058



MOT Date

2027-03-01

Last Service



Number of Owners

1

Last Service Mileage



Number of Keys

2

First Registration Date

2008-02-15

Odometer Reading

203817 km

Country First Registered

Germany

Inspection Report Summary

Customer	BCA Online	Report Number	P20250925102856
Inspection Date / Place	2025-09-25 / ARS Altmann AG Riedstadt	Cosmetic Grade	5

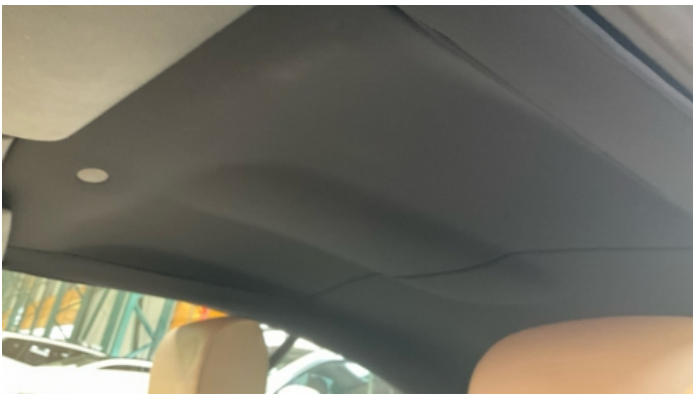
Vehicle Summary

Vehicle Condition	Runner	VAT Type	Margin
Fuel Type	Diesel	Road Worthy	Yes
Colour	Black	Engine Size (cc)	2993
Engine Size	3.0	No of Doors	2
Body Type	Convertible	Drive Train	Rear
Seat Colour		No of Seats	4
Seat Covering Name		Seat Covering	Synthetic Leather
Charging Cables		NEDC CO2 Rating (q/km)	170
Gearbox Type	Manual		

Vehicle History & Documents

Service Book Available	Missing	Next Service Mileage	km
Previous Usage		Imported	No
Manufacturer Warranty			







Equipment

Trip Computer	Anti-lock braking	Diesel particulate filter	Remote adjusting wing mirrors
Satellite navigation	Xenon headlamps	Electrically folding wing mirrors	Rear parking sensors
Alloys wheels	Cruise control	Front parking sensors	Remote central locking
Stability control	CD Player	Radio	

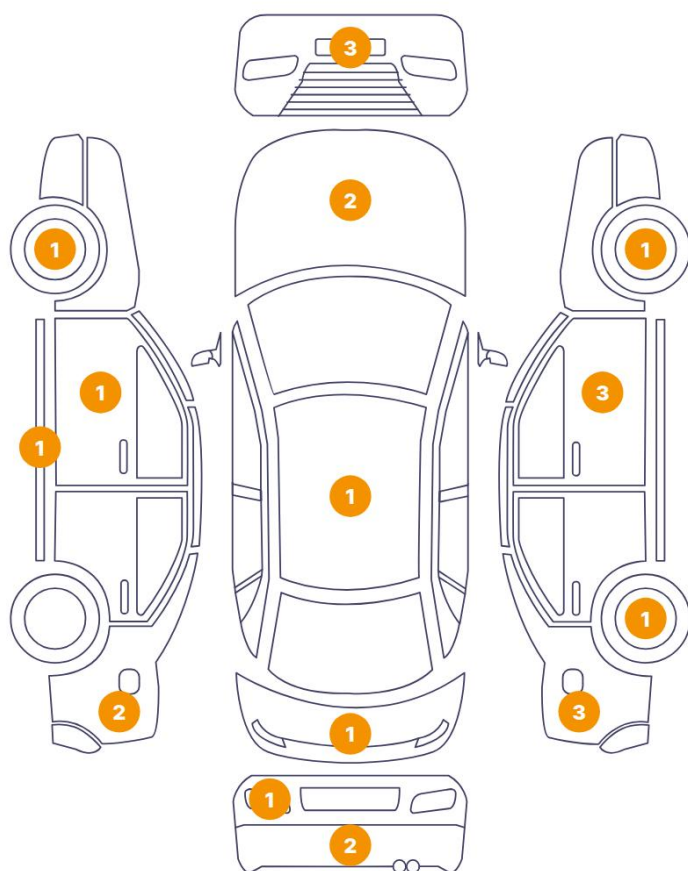
Equipment Details

Air Conditioning	Dual Zone Climate Control	Alloy Wheel Size	17
Seat Heating	Front		

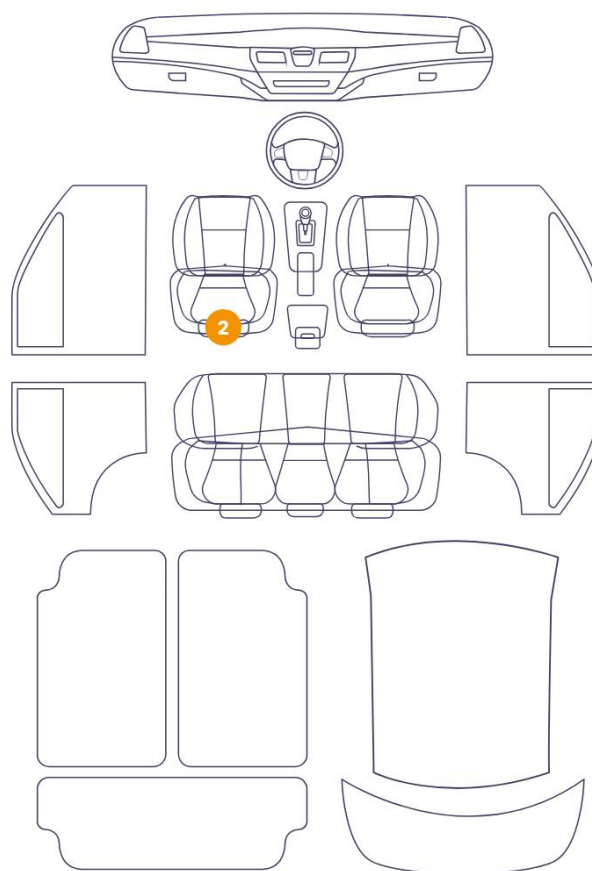
Wheels & Tyres

Right Front Tyre Depth	6	Left Front Tyre Depth	6
Right Rear Tyre Depth	6	Left Rear Tyre Depth	6

23 Schäden



2 Schäden

6/14 - Report Number P20250925102856

13	Tailgate	Bodywork / Dent / Hail Area
14	Rocker Panel / Center Left	Paint / Scratch / Scuff
15	Bumper / Back	Paint / Scratch / Scuff
16	Bumper / Back	Paint / Scratch / Scuff
17	Back Light / Left	Glass Break
18	Fender / Back Right	Paint / Corrosion
19	Rim / Back Right	Out of Bodywork / Scratch
20	Door / Front Right	Paint / Scratch / Scuff
21	Fender / Back Right	Bodywork / Dent / Dent
22	Door / Front Right	Bodywork / Dent / Dent
23	Door / Front Right	Bodywork / Dent / Dent
24	Rim / Front Right	Out of Bodywork / Scratch
25	Fender / Back Right	Paint / Poor Previous Repair



1. Hood
Bodywork / Dent / Hail Area -



2. Hood
Paint / Scratch / Scuff -



3. Bumper / Front
Paint / Scratch / Scuff -



4. Bumper / Front
Paint / Scratch / Scuff -



5. Bumper / Front
Paint / Scratch / Scuff -



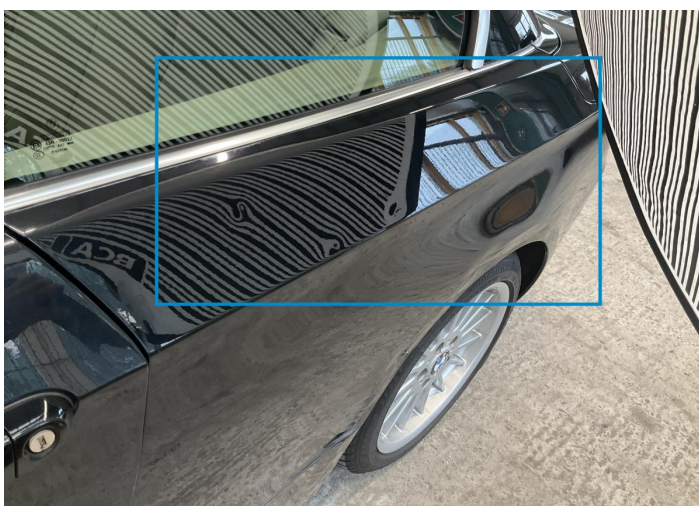
6. Rim / Front Left
Out of Bodywork / Scratch -



7. Door / Front Left
Bodywork / Dent / Hail Area -



8. Roof
Bodywork / Dent / Hail Area -



9. Fender / Back Left
Bodywork / Dent / Hail Area -



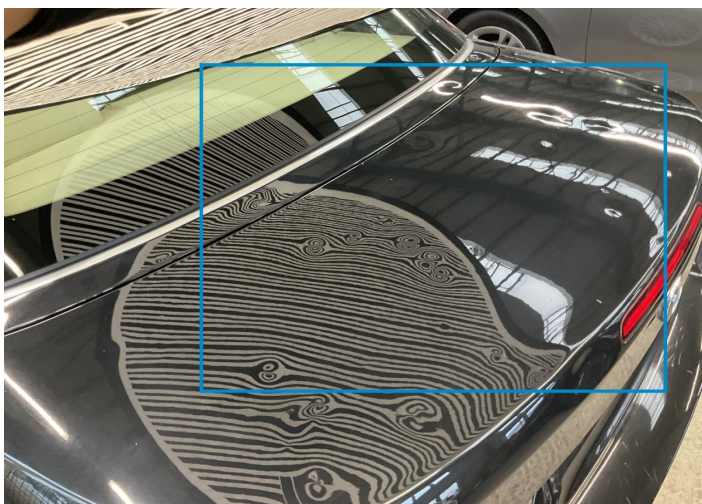
10. Seat / Front Left
Interior / Scratched -



11. Seat / Front Left
Interior / Ripped -



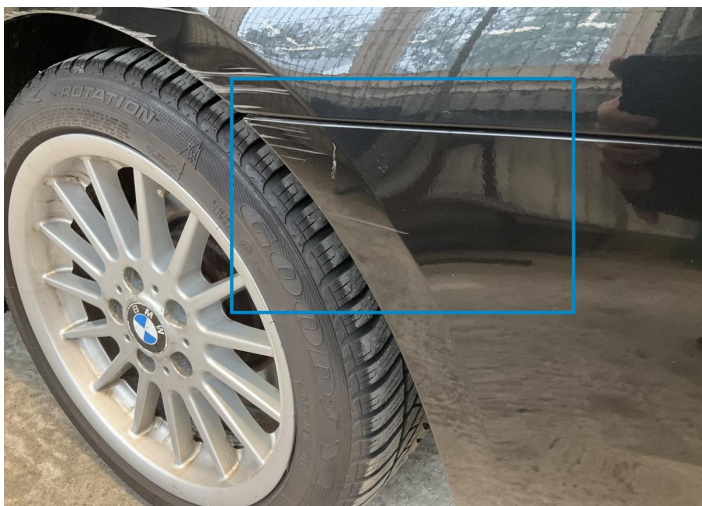
12. Fender / Back Left
Bodywork / Dent / Dent -



13. Tailgate
Bodywork / Dent / Hail Area -



14. Rocker Panel / Center Left
Paint / Scratch / Scuff -



15. Bumper / Back
Paint / Scratch / Scuff -



16. Bumper / Back
Paint / Scratch / Scuff -



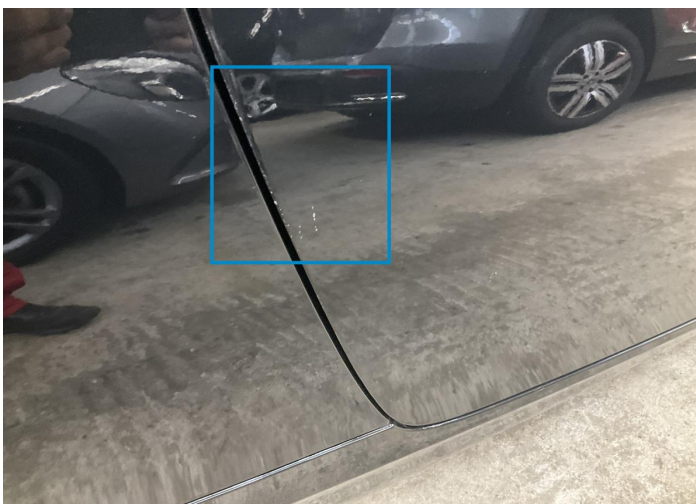
17. Back Light / Left
Glass Break -



18. Fender / Back Right
Paint / Corrosion -



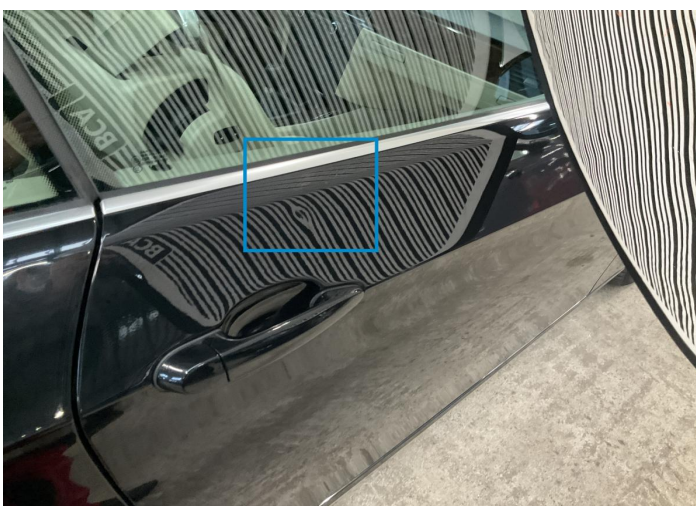
19. Rim / Back Right
Out of Bodywork / Scratch -



20. Door / Front Right
Paint / Scratch / Scuff -



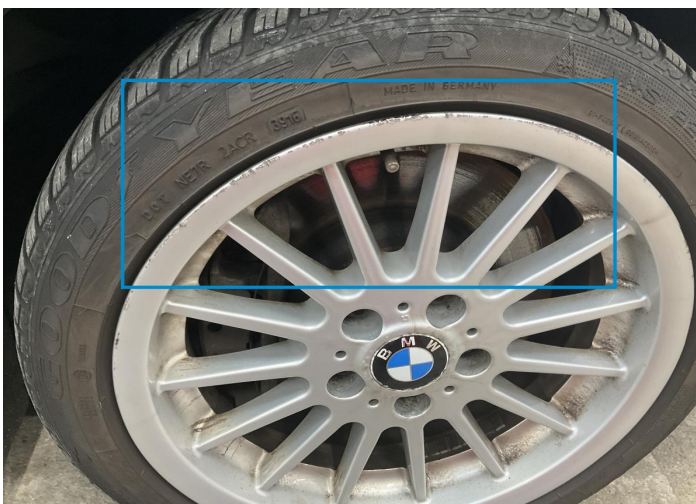
21. Fender / Back Right
Bodywork / Dent / Dent -



22. Door / Front Right
Bodywork / Dent / Dent -



23. Door / Front Right
Bodywork / Dent / Dent -



24. Rim / Front Right
Out of Bodywork / Scratch -



25. Fender / Back Right
Paint / Poor Previous Repair -

Mechanical Condition

Control Lights

Display Defect	✓	Service Light	✓
ABS Warning Light	✓	ESP Fault/Traction Control Malfunction Light	✓
Diesel Particulate Filter Light	✓	Airbag Warning Light	✓
Oil Pressure Warning Light	✓	Brake Warning Light	✓
Power Steering Warning Light	✓	Alternator / Battery	✓
No Dashboard Lights	✓		

Equipments Test

Other Equipments	✓	Central Locking	✓
Main & Spare Keys Functioning	✓	Electric Windows	✓
Navigation System	✓	Audio Equipment	✓
Parking Sensors / Cameras Functioning	✓	AC / Heating System	✓

Engine

Engine Starts	✓	Engine Status / EML	✓
Engine Leak Visible	✓		

Gearbox

Gear Box	✓
----------	---

Levels

Brakes Fluid	✓	Coolant Fluid	✓
--------------	---	---------------	---

Test Drive Inspection

Steering Wheel

Steering | Noise / Anomaly

Engine

Engine Noise The Gears Scratch / Skip / Abnormal Operation

Fume Quantity Power Loss

Brake

Brake System Anomaly

General

Test Driven Status

- No troubles detected, good condition or correct tests, according to vehicle age and mileage
- Damages or malfunction detected that requires repairs by the buyer
- Not applicable
- Not tested

Disclaimer

Please also note the "UserGuide condition report", which shows the scope of the vehicle description. [User Guide](#)