



BMW 3er 320d DPF Touring Aut.

VIN NO WBAVU51000A322098

Registration Number 000A322098



MOT Date

2026-04-01

Last Service



Number of Owners

4

Last Service Mileage



Number of Keys

2

First Registration Date

2008-06-06

Odometer Reading

279262 km

Country First Registered

Germany

Inspection Report Summary

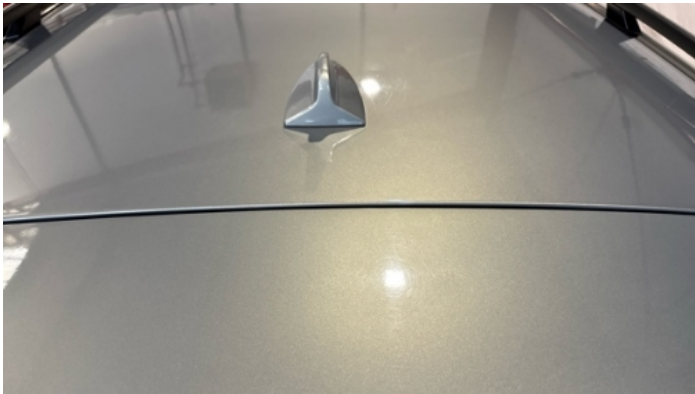
Customer	BCA Online	Report Number	P20250911104534
Inspection Date / Place	2025-09-11 / BCA Oberndorf	Cosmetic Grade	4

Vehicle Summary

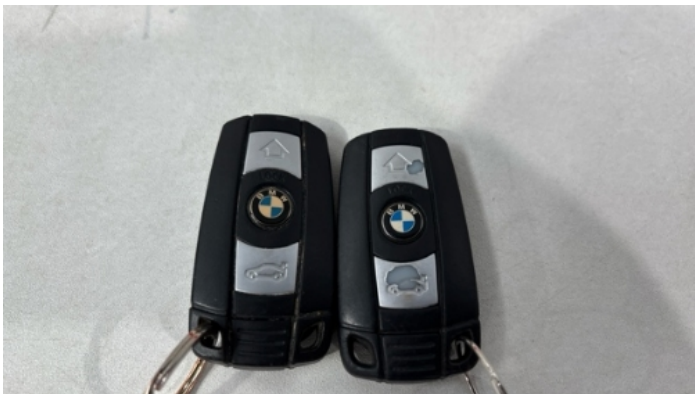
Vehicle Condition	Runner	VAT Type	Margin
Fuel Type	Diesel	Road Worthy	Yes
Colour	Grey	Engine Size (cc)	1995
Engine Size	2.0	No of Doors	5
Body Type	Stationwagon / Estate	Drive Train	Rear
Seat Colour		No of Seats	5
Seat Covering Name	Grau	Seat Covering	Leather
Charging Cables		NEDC CO2 Rating (q/km)	146
Gearbox Type	Automatic		

Vehicle History & Documents

Service Book Available	Missing	Next Service Mileage	km
Previous Usage		Imported	No
Manufacturer Warrenty			







Equipment

Tinted Glass	Airbag Status	Anti-lock braking	Cruise control
Front fog lamps	Remote central locking	Split folding rear seats	Sunroof
CD Player	Electrically adjustable seats	Leather steering wheel	Rear parking sensors
Tow ball	Alloys wheels	Auxiliary Socket	Diesel particulate filter
Remote adjusting wing mirrors	Roof rails	Stability control	Xenon headlamps
Central locking	Electrically folding wing mirrors	Radio	

Equipment Details

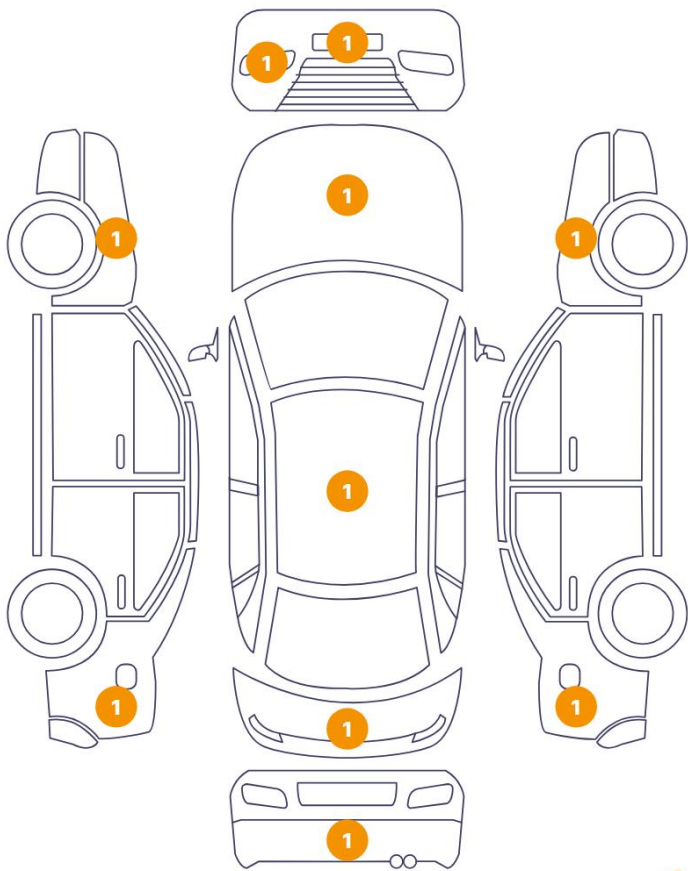
Tow Ball Type	Detachable	Air Conditioning	Three Zone Climate Control
Alloy Wheel Size	18	Extra Wheel / Tyre Set	Winter Tyres - Steel
Seat Heating	Front	Sunroof Type	Opening Panoramic

Wheels & Tyres

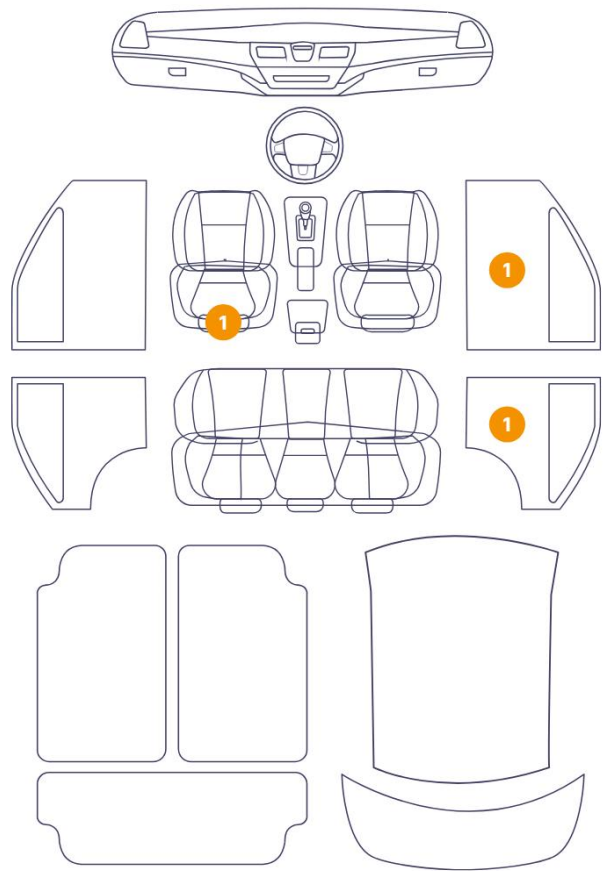
Extra Wheel - 1 Tyre Depth	5	Extra Wheel - 2 Tyre Depth	5
Extra Wheel - 3 Tyre Depth	4	Extra Wheel - 4 Tyre Depth	4
Right Front Tyre Depth	6	Left Front Tyre Depth	6
Right Rear Tyre Depth	6	Left Rear Tyre Depth	6

Cosmetic Damage

12 Schäden



3 Schäden



48 2

Component		Damage	Comments
1	Other	Anomalyon Element	
2	Bumper / Front	Paint / Scratch / Scuff	
3	Headlight Nozzle / Front Left	Paint / Poor Previous Repair	
4	Hood	Bodywork / Dent / Dent	
5	Roof	Bodywork / Dent / Dent	
6	Fender / Front Left	Paint / Scratch / Line	
7	Seat / Front Left	Interior / Scratched	
8	Panel Filling / Front Right	Interior / Scratched	
9	Fender / Back Left	Paint / Scratch / Line	
10	Bumper / Back	Bodywork / Dent / Dent	
11	Fender / Back Right	Paint / Scratch / Line	
12	Interior door handle Back right	Interior / Scratched	

13	Fender / Front Right	Paint / Scratch / Line
14	Other	Paint / Scratch / Scuff
15	Tailgate	Paint / Corrosion



1.
Anomaly Element -



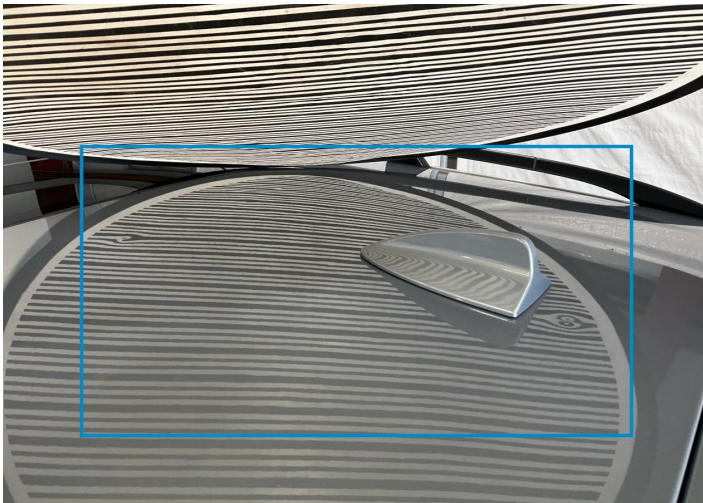
2. Bumper / Front
Paint / Scratch / Scuff -



3. Headlight Nozzle / Front Left
Paint / Poor Previous Repair -



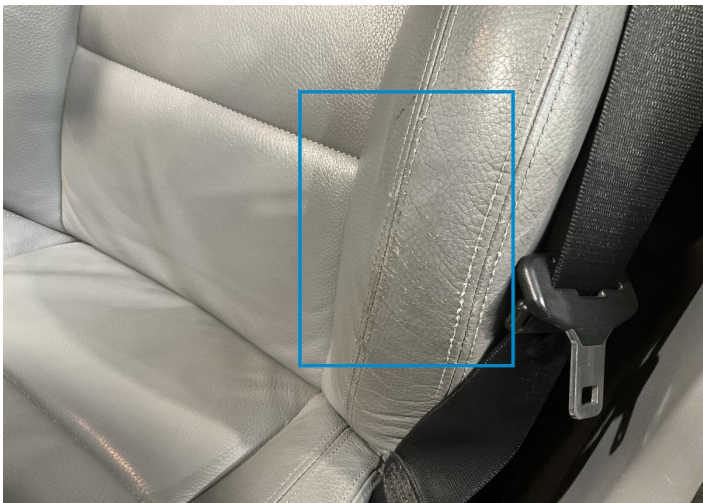
4. Hood
Bodywork / Dent / Dent -



5. Roof
Bodywork / Dent / Dent -



6. Fender / Front Left
Paint / Scratch / Line -



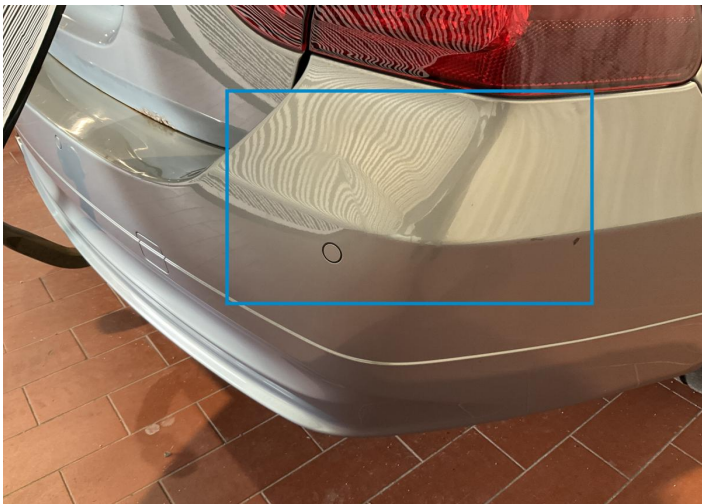
7. Seat / Front Left
Interior / Scratched -



8. Panel Filling / Front Right
Interior / Scratched -



9. Fender / Back Left
Paint / Scratch / Line -



10. Bumper / Back
Bodywork / Dent / Dent -



11. Fender / Back Right
Paint / Scratch / Line -



12. Interior door handle Back right
Interior / Scratched -



13. Fender / Front Right
Paint / Scratch / Line -



14.
Paint / Scratch / Scuff -



15. Tailgate
Paint / Corrosion -

Mechanical Condition

Control Lights

ABS Warning Light	✓	ESP Fault/Traction Control Malfunction Light	✓
Diesel Particulate Filter Light	✓	Airbag Warning Light	✓
Oil Pressure Warning Light	✓	Brake Warning Light	✓
Power Steering Warning Light	✓	Alternator / Battery	✓
No Dashboard Lights	✓	Display Defect	✓
Service Light	✓		

Engine

Engine Status / EML	✓	Engine Leak Visible	!
Engine Starts	✓		

Gearbox

Gear Box	✓
----------	---

Equipments Test

Audio Equipment	✓	AC / Heating System	✓
Central Locking	✓	Main & Spare Keys Functioning	✓
Electric Windows	✓	Parking Sensors / Cameras Functioning	✓
Other Equipments	✓		

Levels

Brakes Fluid	✓	Coolant Fluid	✓
--------------	---	---------------	---

Test Drive Inspection

Steering Wheel

Steering | Noise / Anomaly

Engine

Engine Noise The Gears Scratch / Skip / Abnormal Operation

Fume Quantity Power Loss

Brake

Brake System Anomaly

General

Test Driven Status Not Performed

No troubles detected, good condition or correct tests, according to vehicle age and mileage

Damages or malfunction detected that requires repairs by the buyer

Not applicable

Not tested

Disclaimer

Please also note the "UserGuide condition report", which shows the scope of the vehicle description. [User Guide](#)