




BMW 3er 325i Touring

VIN NO WBAVS11000AG57329

Registration Number 000AG57329



MOT Date

 2026-07-01

Last Service



Number of Owners

 2


Last Service Mileage




Number of Keys

 2


First Registration Date

 2005-11-04

Odometer Reading

 264509 km

Country First Registered

 Germany

Inspection Report Summary

Customer	BCA Online	Report Number	P20250828090806
Inspection Date / Place	2025-08-28 / BCA Oberndorf	Cosmetic Grade	4

Vehicle Summary

Vehicle Condition	Runner	VAT Type	Margin
Fuel Type	Petrol	Road Worthy	Yes
Colour	Black	Engine Size (cc)	2497
Engine Size	2.5	No of Doors	5
Body Type	Stationwagon / Estate	Drive Train	Rear
Seat Colour		No of Seats	5
Seat Covering Name	Schwarz	Seat Covering	Leather
Charging Cables		NEDC CO2 Rating (q/km)	208
Gearbox Type	Manual		

Vehicle History & Documents

Service Book Available	Present	Next Service Mileage	km
Previous Usage		Imported	No
Manufacturer Warrenty			







Equipment

Airbag Status	Anti-lock braking	Cruise control	Front parking sensors
Remote central locking	Split folding rear seats	Xenon headlamps	Central locking
Leather steering wheel	Rear parking sensors	Alloys wheels	Auxiliary Socket
Front fog lamps	Remote adjusting wing mirrors	Roof rails	Stability control
CD Player	Electrically folding wing mirrors	Radio	

Equipment Details

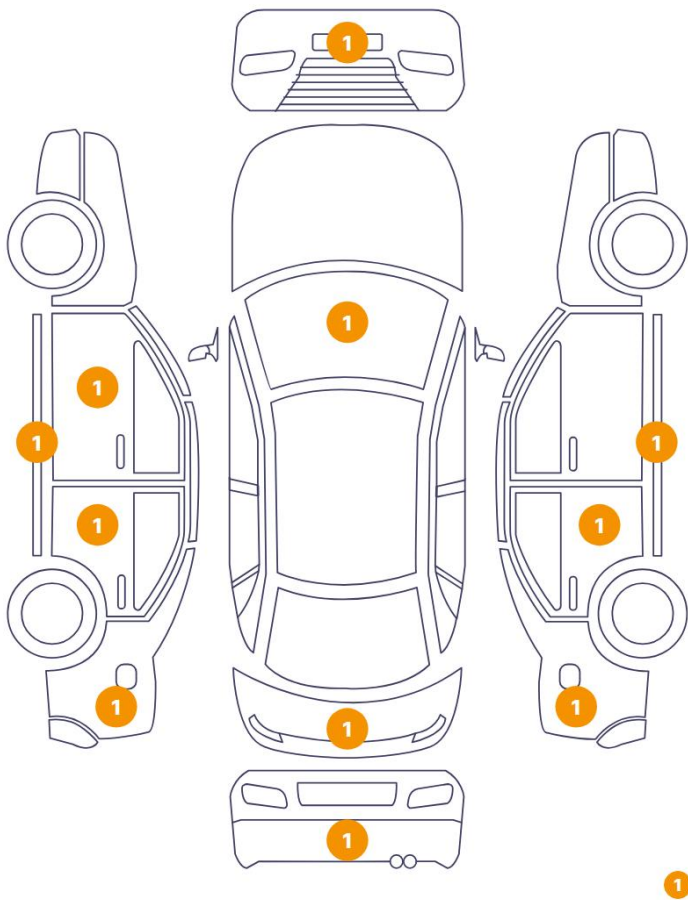
Air Conditioning	Three Zone Climate Control	Alloy Wheel Size	16
Extra Wheel / Tyre Set	Summer Tyres - Alloy	Seat Heating	Front

Wheels & Tyres

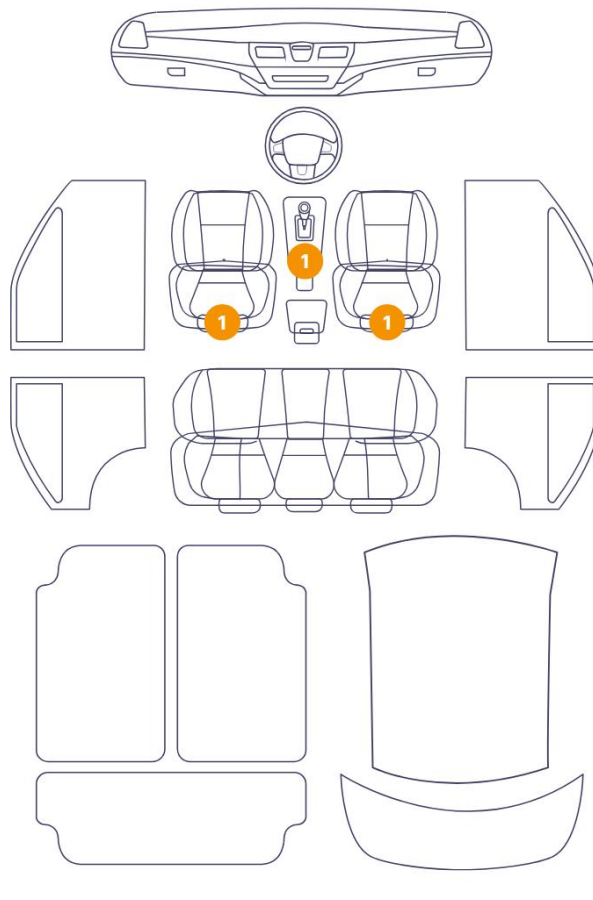
Right Front Tyre Depth	6	Left Front Tyre Depth	6
Right Rear Tyre Depth	5	Left Rear Tyre Depth	5
Extra Wheel - 1 Tyre Depth	7	Extra Wheel - 2 Tyre Depth	7
Extra Wheel - 3 Tyre Depth	5	Extra Wheel - 4 Tyre Depth	5

Cosmetic Damage

12 Schäden



3 Schäden



Component		Damage	Comments
1	Other	Anomalyon Element	
2	Bumper / Front	Paint / Scratch / Scuff	
3	Door / Front Left	Paint / Scratch / Scuff	
4	Rocker Panel / Center Left	Paint / Scratch / Scuff	
5	Door / Back Left	Paint / Scratch / Line	
6	Seat / Front Left	Interior / Scratched	
7	Gear Knob	Interior / Scratched	
8	Side Panel / Back Left	Bodywork / Dent / Dent	
9	Bumper / Back	Paint / Scratch / Scuff	
10	Tailgate	Paint / Scratch / Line	
11	Side Panel / Back Right	Bodywork / Dent / Dent	
12	Door / Back Right	Paint / Scratch / Line	

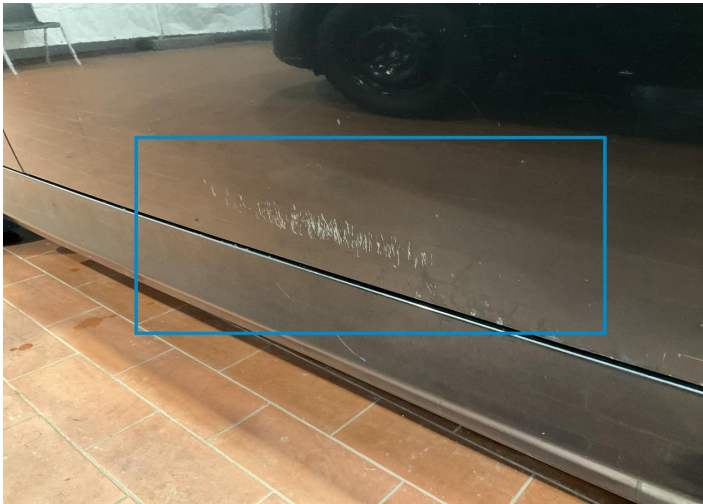
13	Rocker Panel / Center Right	Paint / Scratch / Scuff
14	Seat / Front Right	Interior / Scratched
15	Windshield Joint / Front	Bodywork / Breakage / Crack



1.
Anomalyon Element -



2. Bumper / Front
Paint / Scratch / Scuff -



3. Door / Front Left
Paint / Scratch / Scuff -



4. Rocker Panel / Center Left
Paint / Scratch / Scuff -



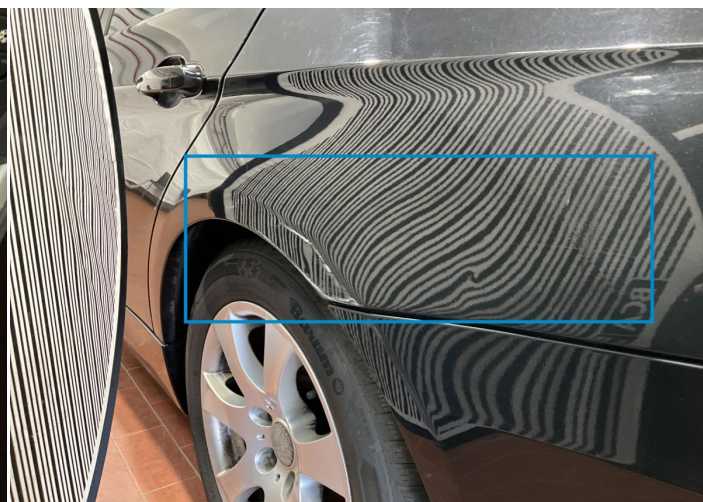
5. Door / Back Left
Paint / Scratch / Line -



6. Seat / Front Left
Interior / Scratched -



7. Gear Knob
Interior / Scratched -



8. Side Panel / Back Left
Bodywork / Dent / Dent -



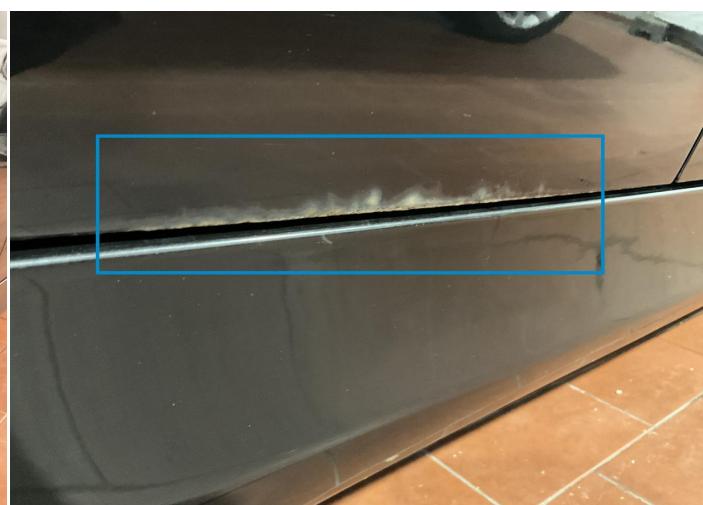
9. Bumper / Back
Paint / Scratch / Scuff -



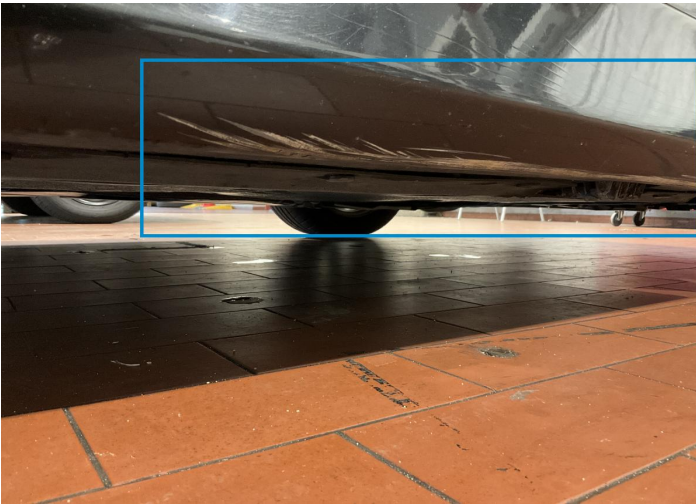
10. Tailgate
Paint / Scratch / Line -



11. Side Panel / Back Right
Bodywork / Dent / Dent -



12. Door / Back Right
Paint / Scratch / Line -



13. Rocker Panel / Center Right
Paint / Scratch / Scuff -



14. Seat / Front Right
Interior / Scratched -



15. Windshield Joint / Front
Bodywork / Breakage / Crack -

Mechanical Condition

Control Lights

Display Defect	✓	Service Light	✓
ABS Warning Light	✓	ESP Fault/Traction Control Malfunction Light	✓
Airbag Warning Light	✓	Oil Pressure Warning Light	✓
Brake Warning Light	✓	Power Steering Warning Light	✓
Alternator / Battery	✓	No Dashboard Lights	✓

Equipments Test

Central Locking	✓	Main & Spare Keys Functioning	✓
Electric Windows	✓	Audio Equipment	✓
Parking Sensors / Cameras Functioning	✓	AC / Heating System	✓
Other Equipments	✓		

Engine

Engine Status / EML	✓	Engine Leak Visible	!
Engine Starts	✓		

Gearbox

Gear Box	✓
----------	---

Levels

Brakes Fluid	✓	Coolant Fluid	✓
--------------	---	---------------	---

Test Drive Inspection

Steering Wheel

Steering | Noise / Anomaly

Engine

Engine Noise The Gears Scratch / Skip / Abnormal Operation

Fume Quantity Power Loss

Clutch

Clutch Functioning

Brake

Brake System Anomaly

General

Test Driven Status Not Performed

- No troubles detected, good condition or correct tests, according to vehicle age and mileage
- Damages or malfunction detected that requires repairs by the buyer
- Not applicable
- Not tested

Disclaimer

Please also note the "UserGuide condition report", which shows the scope of the vehicle description. [User Guide](#)