



BMW 3er 325d DPF Touring Aut.

VIN NO WBAUX910X0F197320
Registration Number 0X0F197320



MOT Date	Number of Owners	Number of Keys	Odometer Reading
-	2	2	320866 km
Last Service	Last Service Mileage	First Registration Date	Country First Registered
2025-02-19	307996	2012-01-18	-

Inspection Report Summary

Customer	BCA Online	Report Number	P20250918110154
Inspection Date / Place	2025-09-18 / ARS Altmann AG Riedstadt	Cosmetic Grade	3

Vehicle Summary

Vehicle Condition	Runner	VAT Type	Margin
Fuel Type	Diesel	Road Worthy	Yes
Colour	Black	Engine Size (cc)	2993
Engine Size	3.0	No of Doors	5
Body Type	Stationwagon / Estate	Drive Train	Rear
Seat Colour		No of Seats	5
Seat Covering Name	Beige	Seat Covering	Synthetic Leather
Charging Cables		NEDC CO2 Rating (q/km)	163
Gearbox Type	Automatic		

Vehicle History & Documents

Service Book Available	Full Service History	Next Service Mileage	km
Previous Usage		Imported	No
Manufacturer Warrenty			







Equipment

Tow ball	USB Socket	Alloys wheels	Auxiliary Socket
Cruise control	Front parking sensors	Remote central locking	Split folding rear seats
CD Player	Electrically folding wing mirrors	Radio	Trip Computer
Airbag Status	Anti-lock braking	Bluetooth telephone interface	Diesel particulate filter
Remote adjusting wing mirrors	Satellite navigation	Stability control	Central locking
Leather steering wheel	Rear parking sensors		

Equipment Details

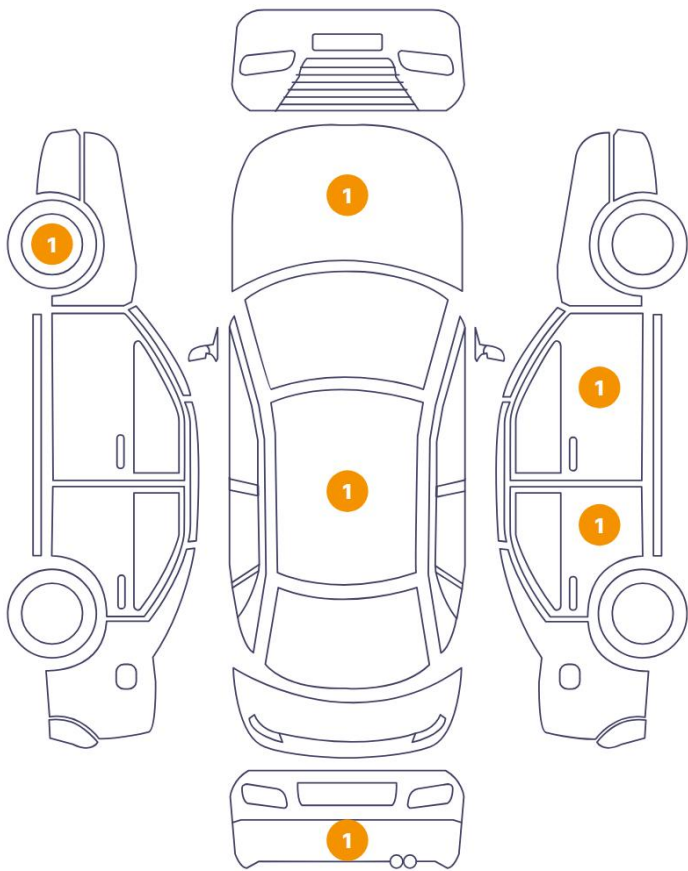
Tow Ball Type	Pivoted	Air Conditioning	Dual Zone Climate Control
Alloy Wheel Size	17	Extra Wheel / Tyre Set	Winter Tyres - Alloy
Seat Heating	Front		

Wheels & Tyres

Right Front Tyre Depth	4	Left Front Tyre Depth	5
Right Rear Tyre Depth	5	Left Rear Tyre Depth	5
Extra Wheel - 1 Tyre Depth	7	Extra Wheel - 2 Tyre Depth	7
Extra Wheel - 3 Tyre Depth	8	Extra Wheel - 4 Tyre Depth	8

Cosmetic Damage

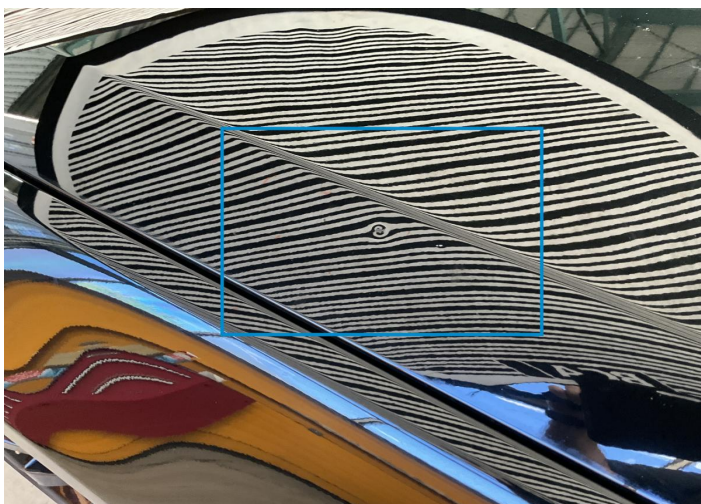
6 Schäden



0 Schäden



Component	Damage	Comments
1 Hood	Bodywork / Dent / Dent	
2 Rim / Front Left	Out of Bodywork / Scratch	
3 Bumper / Back	Paint / Chemical Damage	
4 Door / Back Right	Bodywork / Dent / Dent	
5 Roof	Bodywork / Dent / Dent	
6 Mirror Shell / Front Right	Paint / Scratch / Scuff	



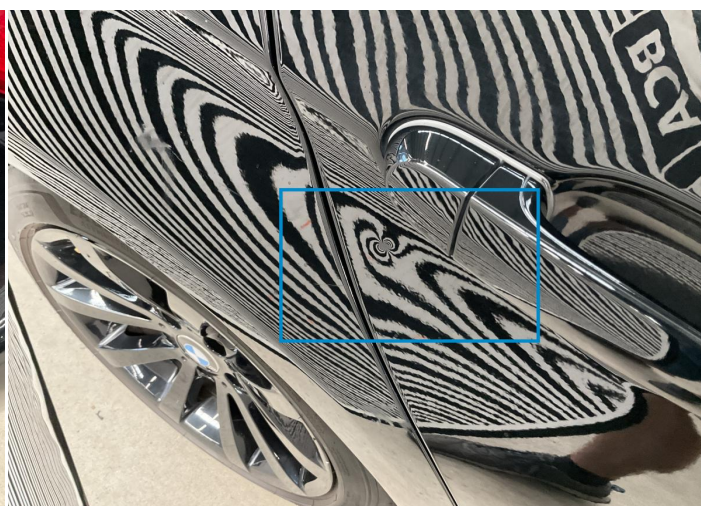
1. Hood
Bodywork / Dent / Dent -



2. Rim / Front Left
Out of Bodywork / Scratch -



3. Bumper / Back
Paint / Chemical Damage -



4. Door / Back Right
Bodywork / Dent / Dent -



5. Roof
Bodywork / Dent / Dent -



6. Mirror Shell / Front Right
Paint / Scratch / Scuff -

Mechanical Condition

Control Lights

Display Defect	✓	Service Light	✓
ABS Warning Light	✓	ESP Fault/Traction Control Malfunction Light	✓
Diesel Particulate Filter Light	✓	Airbag Warning Light	✓
Oil Pressure Warning Light	✓	Brake Warning Light	✓
Power Steering Warning Light	✓	Alternator / Battery	✓
No Dashboard Lights	✓	Tire Pressure Monitoring System	✓

Equipments Test

Central Locking	✓	Main & Spare Keys Functioning	✓
Electric Windows	✓	Navigation System	✓
Audio Equipment	✓	AC / Heating System	✓

Engine

Engine Status / EML	✓	Engine Leak Visible	✓
Engine Starts	✓		

Gearbox

Gear Box	✓
----------	---

Levels

Brakes Fluid	✓	Coolant Fluid	✓
--------------	---	---------------	---

Test Drive Inspection

Steering Wheel			
Steering Noise / Anomaly		✓	
Engine			
Engine Noise	✓	The Gears Scratch / Skip / Abnormal Operation	✓
Fume Quantity	✓	Power Loss	✓
Brake			
Brake System Anomaly		✓	
General			
Test Driven Status		✓	
✓ <i>No troubles detected, good condition or correct tests, according to vehicle age and mileage</i>			
! <i>Damages or malfunction detected that requires repairs by the buyer</i>			
NA <i>Not applicable</i>			
= <i>Not tested</i>			

Disclaimer

Please also note the "UserGuide condition report", which shows the scope of the vehicle description.

[User Guide](#)