



BMW SERIE 1

116d 115 ch Confort

VIN NO WBAUH51070E310362
Registration Number AD949GV



MOT Date



Last Service



Number of Owners



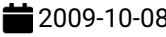
Last Service Mileage



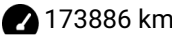
Number of Keys



First Registration Date



Odometer Reading



Country First Registered



Inspection Report Summary

Customer	BCAuto Encheres	Report Number	P20251003080547
Inspection Date / Place	2025-10-03 / BCA BETHUNE	Cosmetic Grade	2

Vehicle Summary

Vehicle Condition	Non-Runner	VAT Type	Exempt Rate
Fuel Type	Diesel	Gearbox Type	Manual
Colour	Black	Engine Size (cc)	1995
Engine Size	2.0	No of Doors	5
Body Type	Hatchback	Drive Train	Rear
Seat Colour		No of Seats	5
Charging Cables		NEDC CO2 Rating (q/km)	118

Vehicle History & Documents

Service Book Available	Present	Next Service Mileage	km
Previous Usage	Normal Use	Imported	No
Manufacturer Warrenty			



Equipment

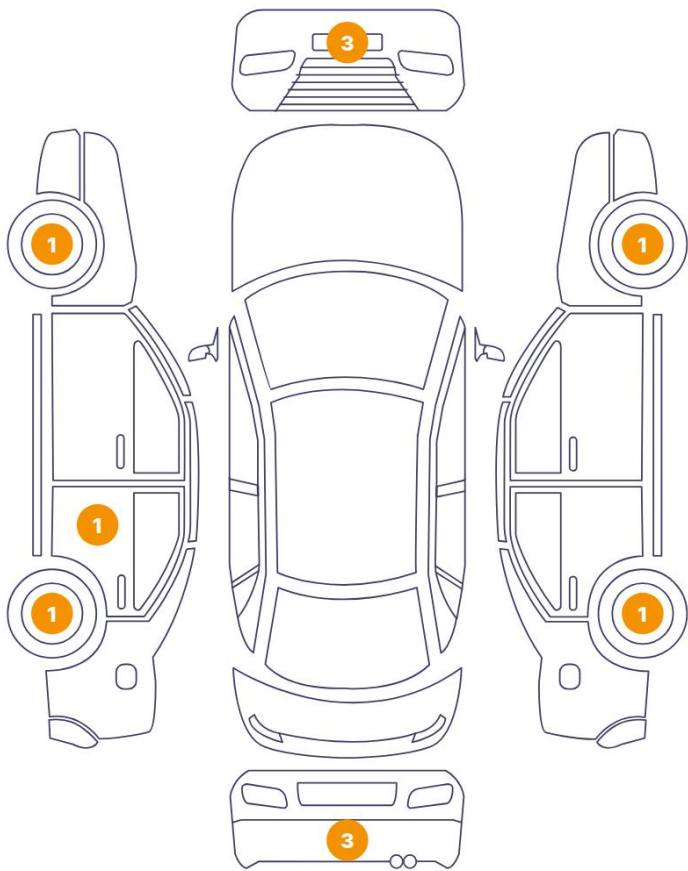
Central locking	Rear parking sensors	Cruise control	Power assisted steering
Radio	Alloys wheels	Front fog lamps	

Equipment Details

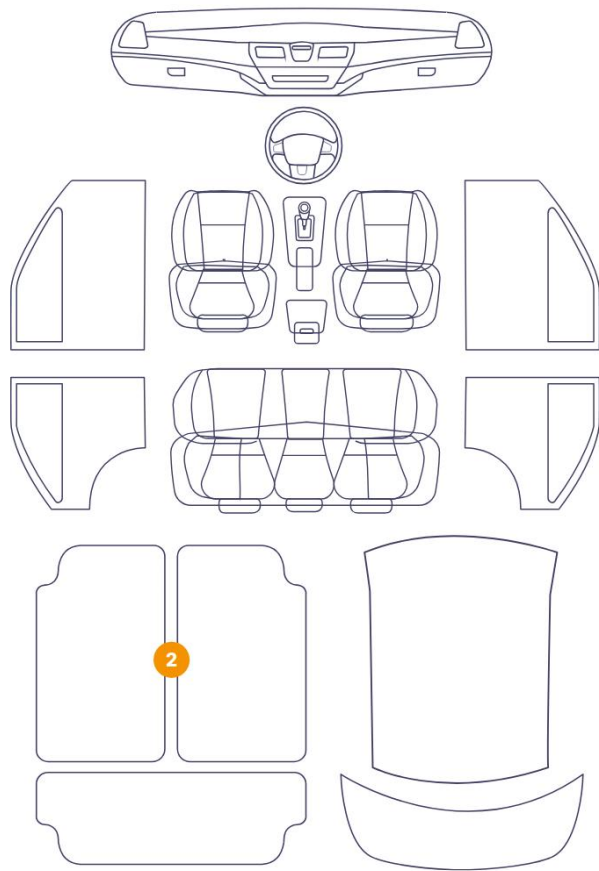
Seat Heating	No	Air Conditioning	Yes
Sunroof Type	Tilt/Slide Steel		

Cosmetic Damage

11 Dommages



2 Dommages



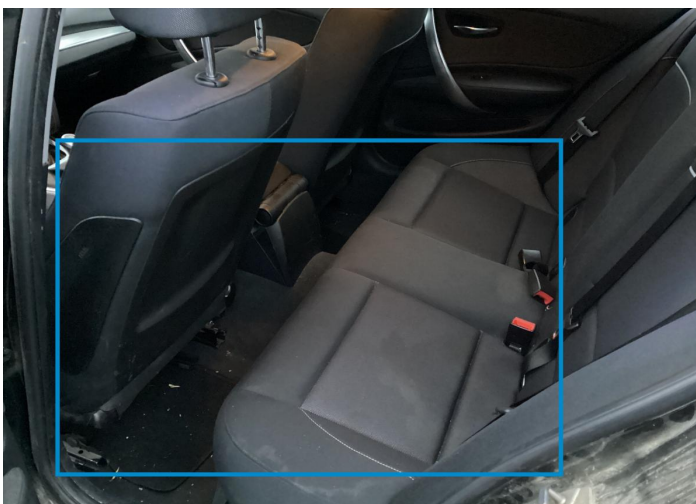
Component		Damage	Comments
1	Floor Carpet	Interior / Dirty	
2	Floor Carpet	Interior / Dirty	
3	Corner Bumper / Front Right	Paint / Scratch / Scuff	
4	Bumper / Front	Paint / Scratch / Scuff	
5	Corner Bumper / Front Left	Paint / Scratch / Scuff	
6	Rim / Front Left	Out of Bodywork / Scratch	
7	Door / Back Left	Paint / Scratch / Line	
8	Rim / Back Left	Out of Bodywork / Scratch	
9	Corner Bumper / Back Left	Paint / Scratch / Scuff	
10	Bumper / Back	Paint / Scratch / Scuff	
11	Corner Bumper / Back Right	Paint / Scratch / Scuff	
12	Rim / Back Right	Out of Bodywork / Scratch	

13 Rim / Front Right

Out of Bodywork / Scratch



1. Floor Carpet
Interior / Dirty -



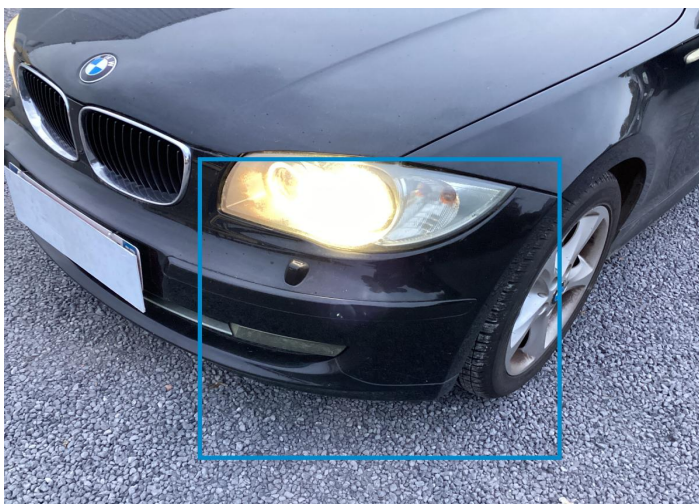
2. Floor Carpet
Interior / Dirty -



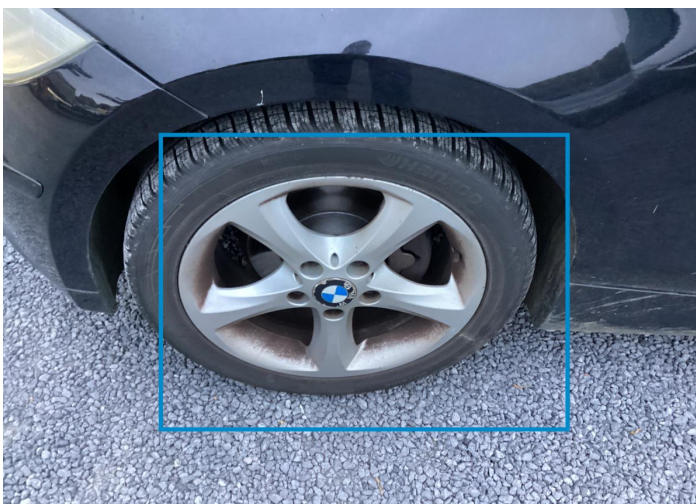
3. Corner Bumper / Front Right
Paint / Scratch / Scuff -



4. Bumper / Front
Paint / Scratch / Scuff -



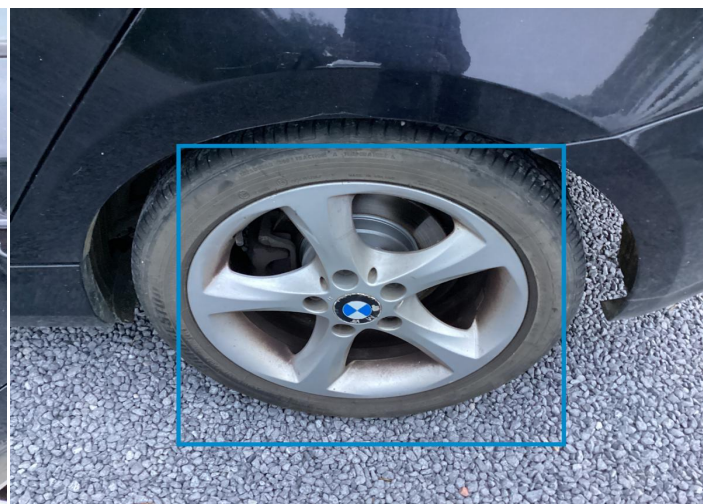
5. Corner Bumper / Front Left
Paint / Scratch / Scuff -



6. Rim / Front Left
Out of Bodywork / Scratch -



7. Door / Back Left
Paint / Scratch / Line -



8. Rim / Back Left
Out of Bodywork / Scratch -



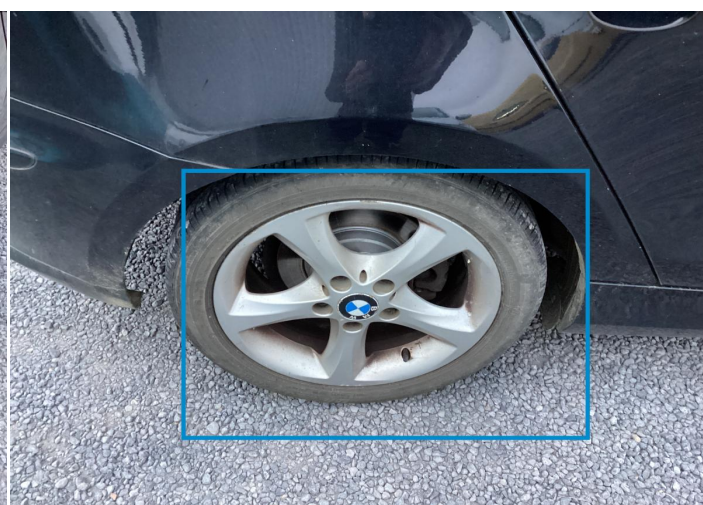
9. Corner Bumper / Back Left
Paint / Scratch / Scuff -



10. Bumper / Back
Paint / Scratch / Scuff -



11. Corner Bumper / Back Right
Paint / Scratch / Scuff -




12. Rim / Back Right
Out of Bodywork / Scratch -



13. Rim / Front Right
Out of Bodywork / Scratch -

Mechanical Condition

Tyres

Presence Anti-Theft Lock Nut 

 *No troubles detected, good condition or correct tests, according to vehicle age and mileage*

 *Damages or malfunction detected that requires repairs by the buyer*

 *Not applicable*

 *Not tested*

Disclaimer Section

The test drive is done on a flat surface and lasts about 2 minutes. The driven distance is a minimum of 300 meters, including a u-turn, an acceleration and a braking phase. The highest speed achieved during this test is 50km/h. The mechanical check is a visual and dynamic diagnosis without any disassembly. We cannot guarantee any mechanical wear part.