



BMW X3 X3 xDrive30e Aut.

VIN NO WBATS110809F39649
Registration Number 0809F39649



MOT Date

2026-01-01

Last Service

2025-06-17

Number of Owners

1

Last Service Mileage

225641

Number of Keys

2

First Registration Date

2021-01-21

Odometer Reading

233143 km

Country First Registered

Germany

Inspection Report Summary

Customer	BCA Online	Report Number	P20250918091508
Inspection Date / Place	2025-09-18 / BCA Oberndorf	Cosmetic Grade	3

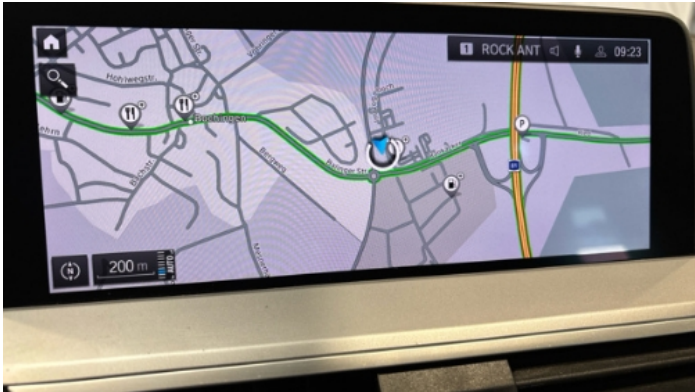
Vehicle Summary

Vehicle Condition	Runner	VAT Type	Qualifying
Fuel Type	Plug - in Hybrid Electric Vehicle Petrol	Road Worthy	Yes
Colour	White	Engine Size (cc)	1998
Engine Size	2.0	No of Doors	5
Body Type	SUV	Drive Train	All-Wheel-Drive permanent
Seat Colour		No of Seats	5
Seat Covering Name		Seat Covering	Cloth
Charging Cables	OUC + Type 2	NEDC CO2 Rating (q/km)	48
Gearbox Type	Automatic		

Vehicle History & Documents

Service Book Available	Present	Next Service Mileage	km
Previous Usage		Imported	No
Manufacturer Warrenty			







Equipment

Tow ball	Airbag Status	AndroidAuto	AppleCarPlay
Cruise control	Digitaldashboard	Front parking sensors	Remote adjusting wing mirrors
Roof rails	Split folding rear seats	Electrically folding wing mirrors	Keyless Entry
LED Headlamps	Rear parking sensors	USB Socket	Alloys wheels
Anti-lock braking	Bluetooth telephone interface	Digital Radio	Front fog lamps
Head up Display	Remote central locking	Satellite navigation	Stability control
Electrictailgate	Leather steering wheel	Radio	

Equipment Details

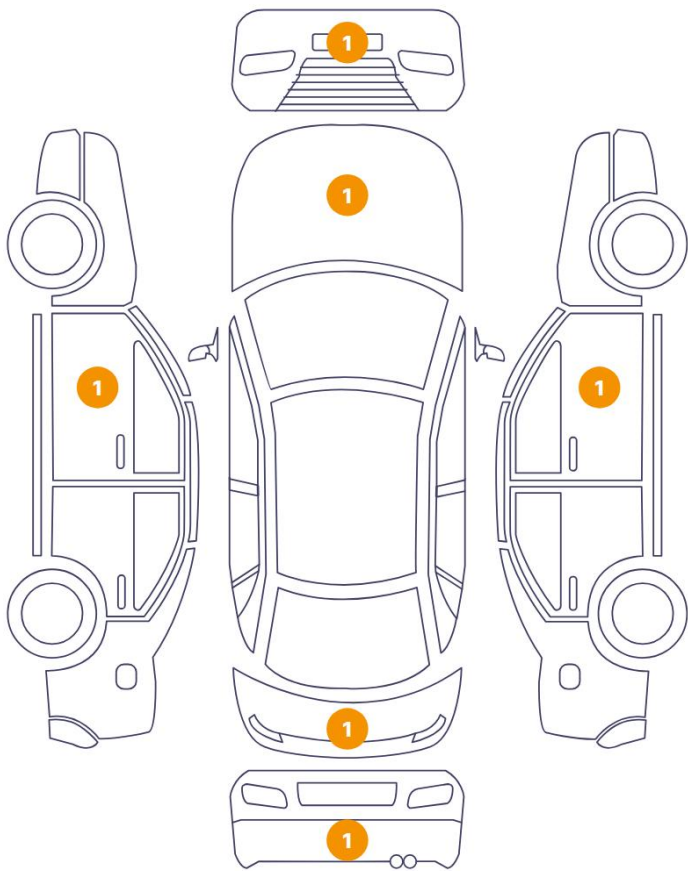
Tow Ball Type	Electronic	Air Conditioning	Three Zone Climate Control
Alloy Wheel Size	19	Seat Heating	Front

Wheels & Tyres

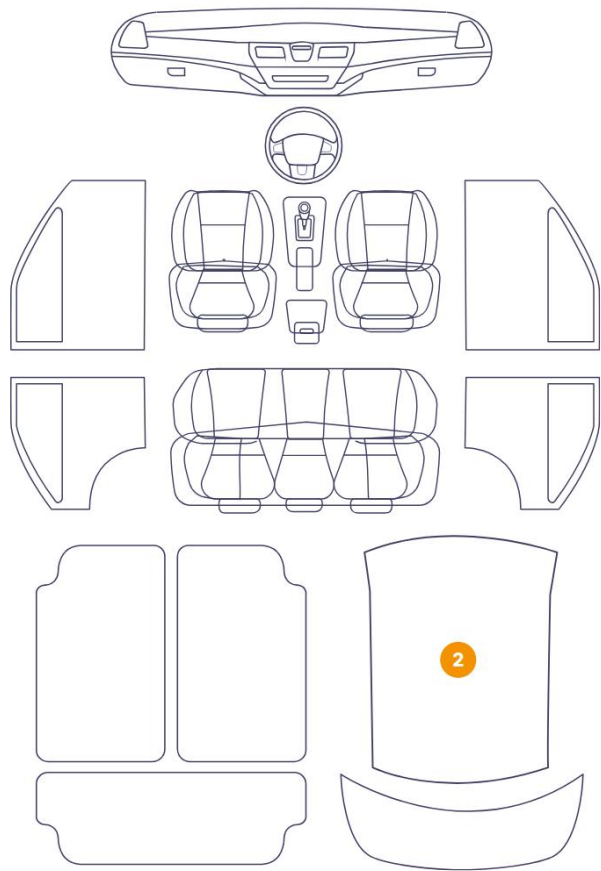
Right Front Tyre Depth	5	Left Front Tyre Depth	5
Right Rear Tyre Depth	4	Left Rear Tyre Depth	4

Cosmetic Damage

6 Schäden



2 Schäden



Component		Damage	Comments
1	Roof Upholstery	Interior / Scratched	
2	Roof Upholstery	Interior / Dirty	
3	Bumper / Back	Paint / Scratch / Scuff	
4	Door / Front Left	Paint / Scratch / Scuff	
5	Hood	Paint / Stone Chip	
6	Bumper / Front	Paint / Scratch / Scuff	
7	Pillar / Front Right	Paint / Scratch / Scuff	
8	Tailgate	Paint / Scratch / Scuff	



1. Roof Upholstery
Interior / Scratched -



2. Roof Upholstery
Interior / Dirty -



3. Bumper / Back
Paint / Scratch / Scuff -



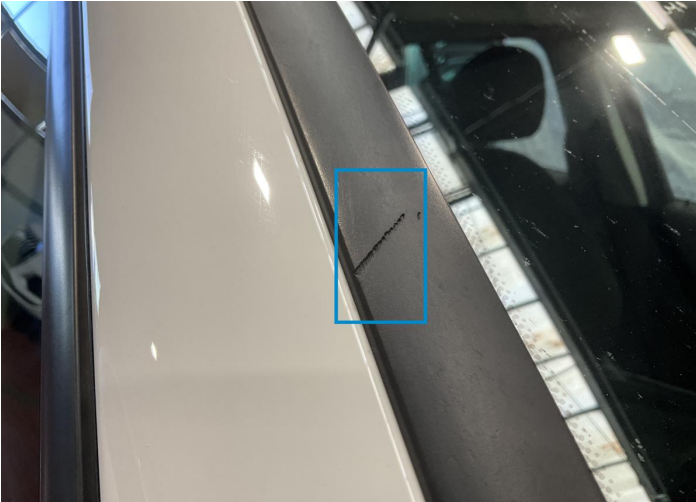
4. Door / Front Left
Paint / Scratch / Scuff -



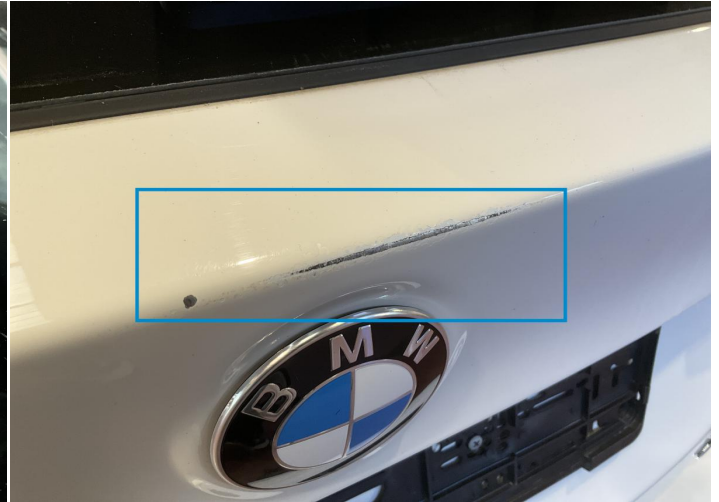
5. Hood
Paint / Stone Chip -



6. Bumper / Front
Paint / Scratch / Scuff -



7. Pillar / Front Right
Paint / Scratch / Scuff -



8. Tailgate
Paint / Scratch / Scuff -

Mechanical Condition

Control Lights

Display Defect	✓	Service Light	✓
ABS Warning Light	✓	ESP Fault/Traction Control Malfunction Light	✓
Airbag Warning Light	✓	Oil Pressure Warning Light	✓
Brake Warning Light	✓	Power Steering Warning Light	✓
Alternator / Battery	✓	No Dashboard Lights	✓

Equipments Test

Central Locking	✓	Main & Spare Keys Functioning	!
Electric Windows	✓	Navigation System	✓
Audio Equipment	✓	Parking Sensors / Cameras Functioning	✓
AC / Heating System	✓		

Engine

Engine Status / EML	✓	Engine Leak Visible	NA
Engine Starts	✓		

Gearbox

Gear Box	✓
----------	---

Hybrid/EV

Charge Lead Condition	✓	Charge Port Condition	✓
Hybrid System Fault	✓		

Levels

Coolant Fluid	✓
---------------	---

Test Drive Inspection

Steering Wheel

Steering | Noise / Anomaly 





Engine

Engine Noise  Fume Quantity 

Power Loss 

General

Test Driven Status Not Performed

-  No troubles detected, good condition or correct tests, according to vehicle age and mileage
-  Damages or malfunction detected that requires repairs by the buyer
-  Not applicable
-  Not tested

Disclaimer

Please also note the "UserGuide condition report", which shows the scope of the vehicle description. [User Guide](#)