



BMW X5 X5 xDrive40d Sport-Aut.

VIN NO WBAKS610300N64498
Registration Number 0300N64498



MOT Date

2027-07-01

Last Service

2025-07-09

Number of Owners

2

Last Service Mileage

308073

Number of Keys

2

First Registration Date

2016-07-21

Odometer Reading

311577 km

Country First Registered

Germany

Inspection Report Summary

Customer	BCA Online	Report Number	P20250911102350
Inspection Date / Place	2025-09-11 / BCA Oberndorf	Cosmetic Grade	3

Vehicle Summary

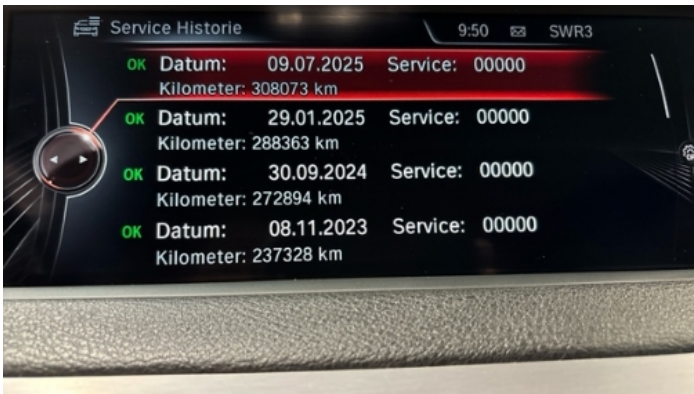
Vehicle Condition	Runner	VAT Type	Margin
Fuel Type	Diesel	Road Worthy	Yes
Colour	Black	Engine Size (cc)	2993
Engine Size	3.0	No of Doors	5
Body Type	SUV	Drive Train	All-Wheel-Drive permanent
Seat Colour		No of Seats	5
Seat Covering Name	Schwarz	Seat Covering	Leather
Charging Cables		NEDC CO2 Rating (q/km)	183
Gearbox Type	Automatic		

Vehicle History & Documents

Service Book Available	Present	Next Service Mileage	km
Previous Usage		Imported	No
Manufacturer Warrenty			







Equipment

Tinted Glass	USB Socket	Alloys wheels	Anti-lock braking
Blindspotassist	Cabin Pre Heating	Diesel particulate filter	Enhanced speaker system
Front parking sensors	Heated wing mirrors	Remote central locking	Roof rails
Split folding rear seats	CD Player	Electrically adjustable seats	Electrictailgate
Keyless Entry	Leather steering wheel	Radio	Tow ball
Airbag Status	Ambientlighting	Auxiliary Socket	Bluetooth telephone interface
Cruise control	Digital Radio	Front fog lamps	Head up Display
Remote adjusting wing mirrors	Reversing Camera	Satellite navigation	Stability control
Central locking	Electrically folding wing mirrors	Emergencybrakeassist	Laneassist
LED Headlamps	Rear parking sensors		

Equipment Details

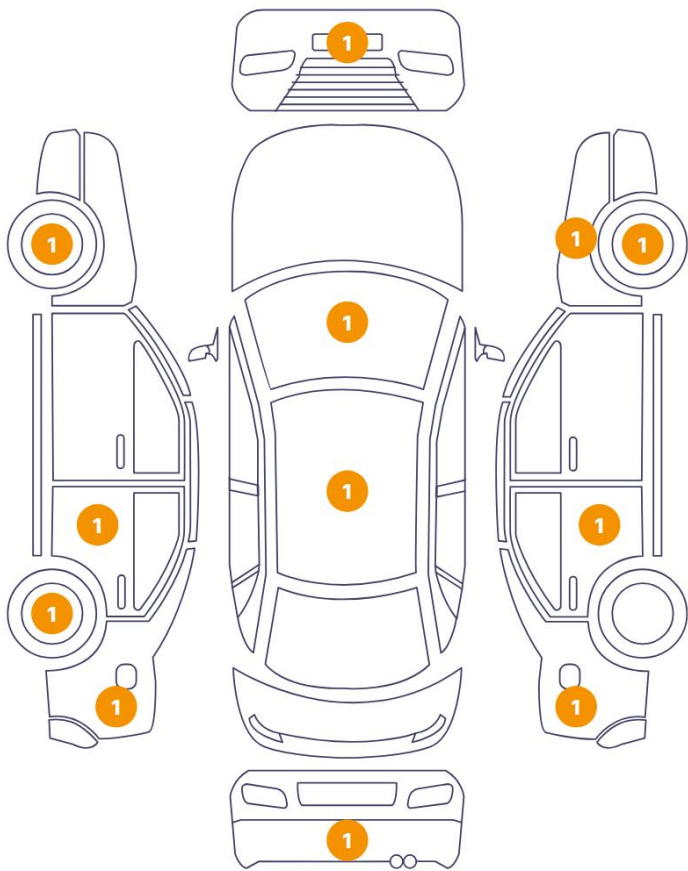
Tow Ball Type	Electronic	Air Conditioning	Dual Zone Climate Control
Alloy Wheel Size	20	Enhanced Speaker System	harman/kardon
Seat Heating	Front		

Wheels & Tyres

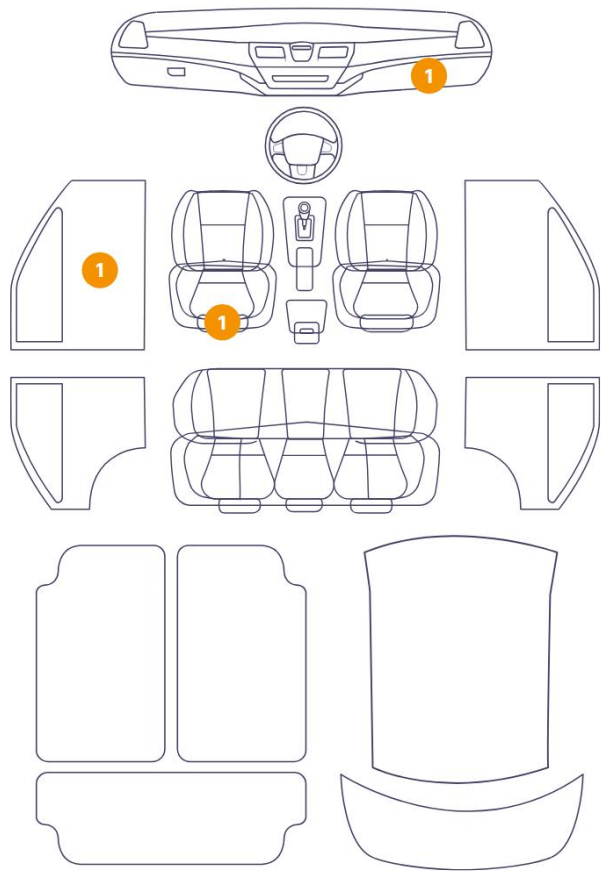
Left Rear Tyre Depth	5	Right Front Tyre Depth	7
Left Front Tyre Depth	7	Right Rear Tyre Depth	5

Cosmetic Damage

12 Schäden



4 Schäden



1

Component		Damage	Comments
1	Windshield / Front	Glass Break / Impact	
2	Bumper / Front	Paint / Scratch / Scuff	
3	Roof Rack / Left	Paint / Scratch / Scuff	
4	Seat / Front Left	Interior / Scratched	
5	Center Console	Interior / Scratched	
6	Panel Filling / Front Left	Interior / Scratched	
7	Door / Back Left	Bodywork / Dent / Dent	
8	Door Edge / Back Left	Paint / Scratch / Scuff	
9	Bumper / Back	Paint / Scratch / Scuff	
10	Other	Interior / Broken	
11	Door / Back Right	Paint / Stone Chip	
12	Door Edge / Back Right	Bodywork / Dent / Dent	

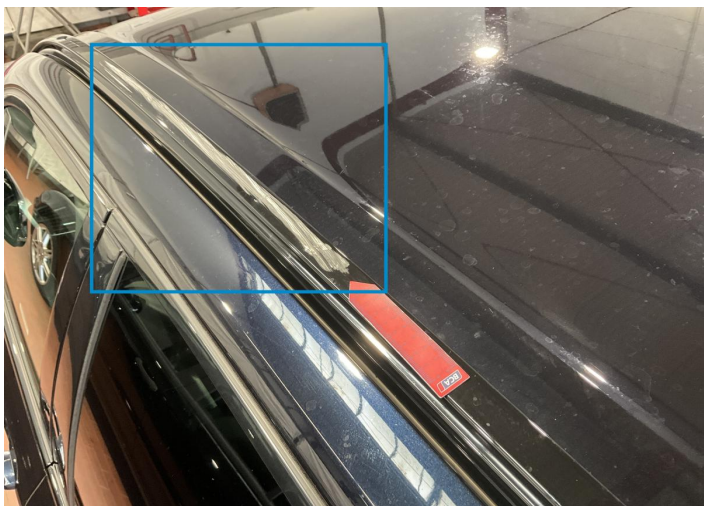
13	Wing Expander / Front Right	Paint / Stone Chip
14	Rim / Front Right	Out of Bodywork / Scratch
15	Rim / Front Left	Out of Bodywork / Scratch
16	Rim / Back Left	Out of Bodywork / Scratch



1. Windshield / Front
Glass Break / Impact -



2. Bumper / Front
Paint / Scratch / Scuff -



3. Roof Rack / Left
Paint / Scratch / Scuff -



4. Seat / Front Left
Interior / Scratched -



5. Center Console
Interior / Scratched -



6. Panel Filling / Front Left
Interior / Scratched -



7. Door / Back Left
Bodywork / Dent / Dent -



8. Door Edge / Back Left
Paint / Scratch / Scuff -



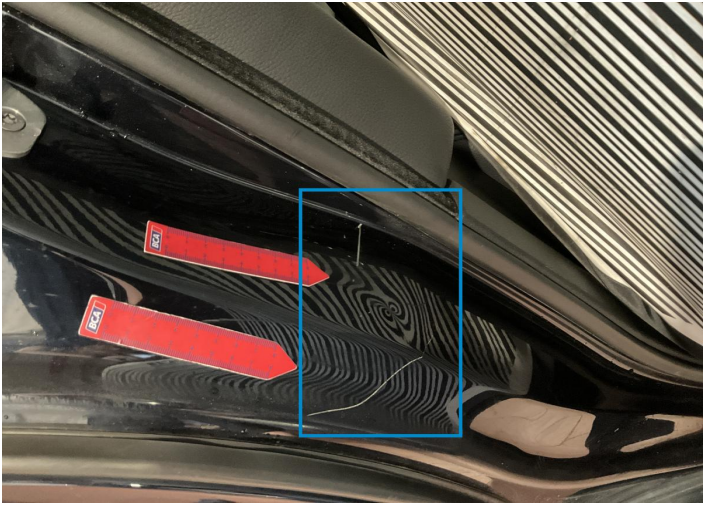
9. Bumper / Back
Paint / Scratch / Scuff -



10.
Interior / Broken -



11. Door / Back Right
Paint / Stone Chip -



12. Door Edge / Back Right
Bodywork / Dent / Dent -



13. Wing Expander / Front Right
Paint / Stone Chip -



14. Rim / Front Right
Out of Bodywork / Scratch -



15. Rim / Front Left
Out of Bodywork / Scratch -



16. Rim / Back Left
Out of Bodywork / Scratch -

Mechanical Condition

Equipments Test

Central Locking	✓	Electric Windows	✓
Navigation System	✓	Audio Equipment	✓
AC / Heating System	✓	Main & Spare Keys Functioning	✓
Parking Sensors / Cameras Functioning	✓	Other Equipments	✓

Control Lights

ABS Warning Light	✓	ESP Fault/Traction Control Malfunction Light	✓
Diesel Particulate Filter Light	✓	Airbag Warning Light	✓
Oil Pressure Warning Light	✓	Brake Warning Light	✓
Power Steering Warning Light	✓	Alternator / Battery	✓
All - wheel Drive	✓	No Dashboard Lights	✓
Display Defect	✓	Service Light	✓
Tire Pressure Monitoring System	✓		

Engine

Engine Status / EML	✓	Engine Leak Visible	❗
Engine Starts	✓		

Gearbox

Gear Box	✓
----------	---

Levels

Brakes Fluid	✓	Coolant Fluid	✓
--------------	---	---------------	---

Test Drive Inspection

Steering Wheel			
Steering Noise / Anomaly		✔	
Engine			
Engine Noise	✔	The Gears Scratch / Skip / Abnormal Operation	✔
Fume Quantity	✔	Power Loss	✔
Brake			
Brake System Anomaly		✔	
General			
Test Driven Status		Not Performed	
<div>✔ <i>No troubles detected, good condition or correct tests, according to vehicle age and mileage</i></div> <div>❗ <i>Damages or malfunction detected that requires repairs by the buyer</i></div> <div>NA <i>Not applicable</i></div> <div>☐ <i>Not tested</i></div>			

Disclaimer

Please also note the "UserGuide condition report", which shows the scope of the vehicle description.

User Guide