



# BMW 5er 530d xDrive Touring Aut.

VIN NO WBAJN510X0G978320  
Registration Number 0X0G978320



MOT Date	Number of Owners	Number of Keys	Odometer Reading
2027-03-01	2	2	153846 km
Last Service	Last Service Mileage	First Registration Date	Country First Registered
2024-11-04	142019	2017-10-24	Germany

## Inspection Report Summary

Customer	BCA Online	Report Number	P20250923132549
Inspection Date / Place	2025-09-23 / BCA Heidenheim	Cosmetic Grade	3

## Vehicle Summary

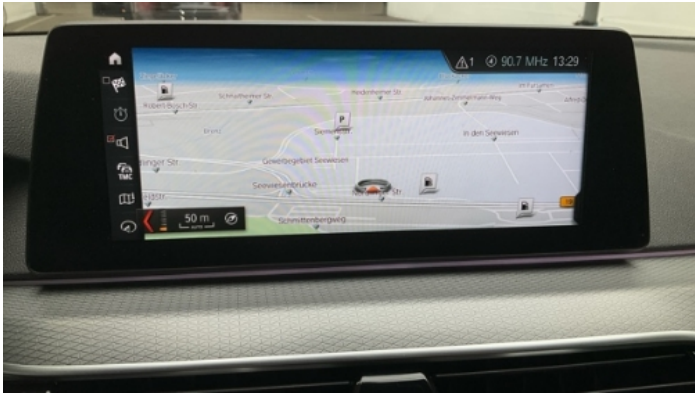
Vehicle Condition	Runner	VAT Type	Margin
Fuel Type	Diesel	Road Worthy	Yes
Colour	Grey	Engine Size (cc)	2993
Engine Size	3.0	No of Doors	5
Body Type	Stationwagon / Estate	Drive Train	All-Wheel-Drive permanent
Seat Colour		No of Seats	5
Seat Covering Name	Schwarz	Seat Covering	Cloth
Charging Cables		NEDC CO2 Rating (q/km)	148
Gearbox Type	Automatic		

## Vehicle History & Documents

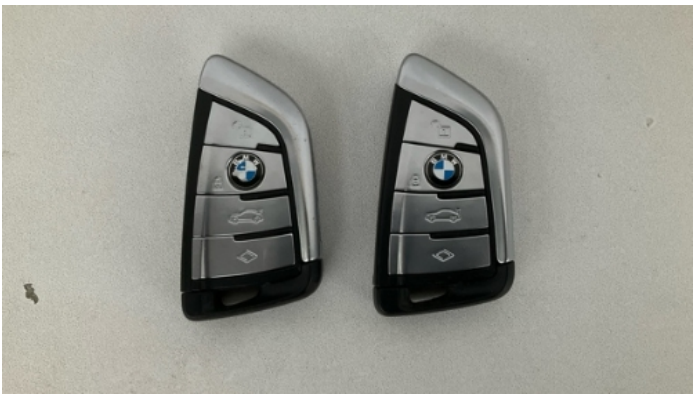
Service Book Available	Present	Next Service Mileage	km
Previous Usage		Imported	No
Manufacturer Warrenty			











Equipment

Tow ball	Adaptivecruisecontrol	Alloys wheels	Cruise control
Digitaldashboard	Front parking sensors	Remote central locking	Satellite navigation
CD Player	Electrictailgate	Leather steering wheel	Privacy glass
Rain sensitive windscreen wipers	USB Socket	Airbag Status	Anti-lock braking
Diesel particulate filter	Front fog lamps	Remote adjusting wing mirrors	Roof rails
Stability control	Electrically folding wing mirrors	Laneassist	LED Headlamps
Radio	Rear parking sensors		

Equipment Details

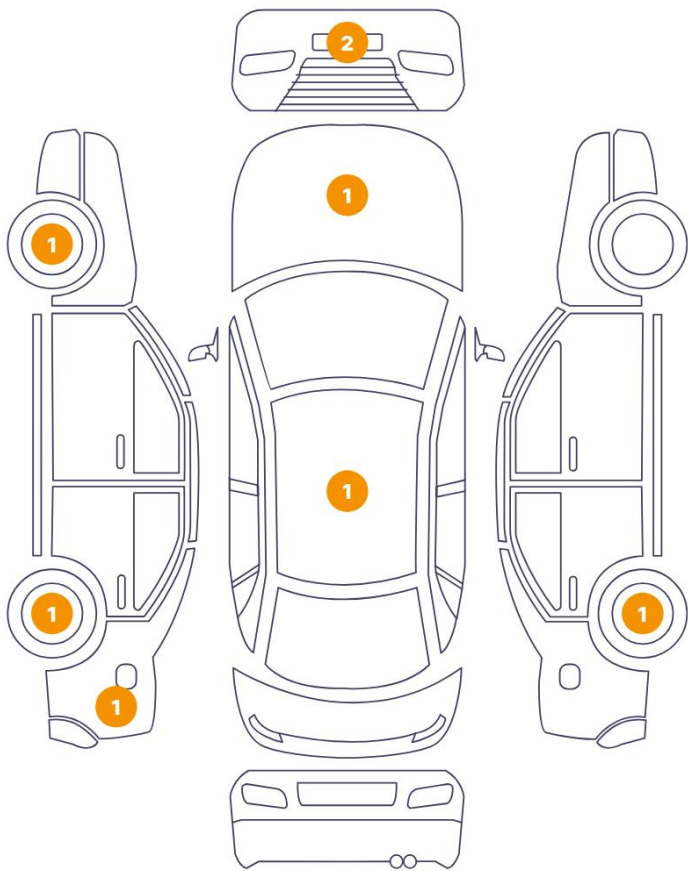
Tow Ball Type	Electronic	Air Conditioning	Dual Zone Climate Control
Alloy Wheel Size	19	Seat Heating	Front

Wheels & Tyres

Right Front Tyre Depth	7	Left Front Tyre Depth	7
Right Rear Tyre Depth	7	Left Rear Tyre Depth	7

Cosmetic Damage

8 Schäden

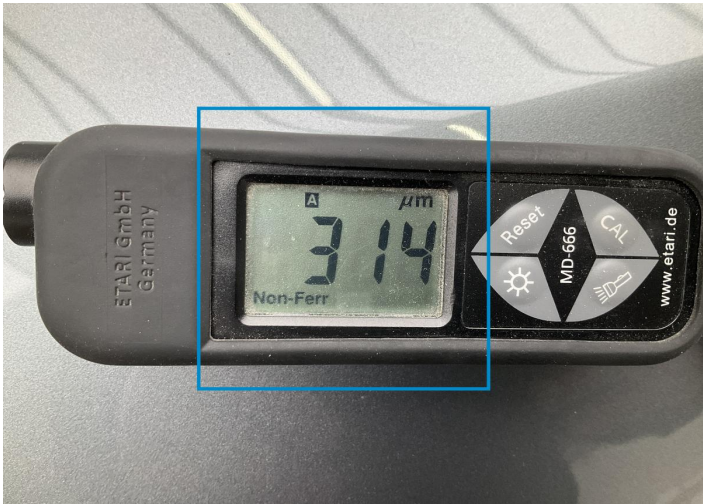


0 Schäden



Component	Damage	Comments
1 Hood	Paint / Poor Previous Repair	
2 Rim / Front Left	Out of Bodywork / Scratch	
3 Bumper / Front	Paint / Scratch / Scuff	
4 Bumper / Front	Paint / Scratch / Scuff	
5 Roof	Bodywork / Dent / Dent	
6 Rim / Back Right	Out of Bodywork / Scratch	
7 Rim / Back Left	Out of Bodywork / Scratch	
8 Side Panel / Back Left	Paint / Scratch / Scuff	

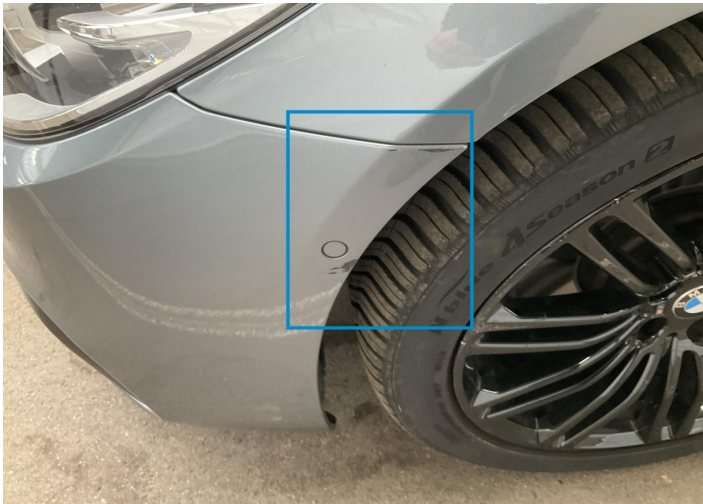




1. Hood  
Paint / Poor Previous Repair -



2. Rim / Front Left  
Out of Bodywork / Scratch -



3. Bumper / Front  
Paint / Scratch / Scuff -



4. Bumper / Front  
Paint / Scratch / Scuff -



5. Roof  
Bodywork / Dent / Dent -



6. Rim / Back Right  
Out of Bodywork / Scratch -



7. Rim / Back Left  
Out of Bodywork / Scratch -



8. Side Panel / Back Left  
Paint / Scratch / Scuff -



## Mechanical Condition

### Control Lights

ABS Warning Light	✓	ESP Fault/Traction Control Malfunction Light	✓
Diesel Particulate Filter Light	✓	Airbag Warning Light	✓
Oil Pressure Warning Light	✓	Brake Warning Light	✓
Power Steering Warning Light	✓	Alternator / Battery	✓
All - wheel Drive	✓	No Dashboard Lights	✓
Display Defect	✓	Tire Pressure Monitoring System	✓

### Engine

Engine Status / EML	✓	Engine Leak Visible	NA
Engine Starts	✓		

### Gearbox

Gear Box	✓
----------	---

### Equipments Test

Central Locking	✓	Main & Spare Keys Functioning	✓
Electric Windows	✓	Navigation System	✓
Audio Equipment	✓	Parking Sensors / Cameras Functioning	✓
AC / Heating System	✓	Other Equipments	✓

### Levels

Brakes Fluid	✓	Coolant Fluid	✓
--------------	---	---------------	---

## Test Drive Inspection

Engine			
Fume Quantity	✓	Engine Noise	✓
The Gears Scratch / Skip / Abnormal Operation	✓	Power Loss	✓
Brake			
Brake System Anomaly	✓		
Steering Wheel			
Steering   Noise / Anomaly	✓		
General			
Test Driven Status	✓		
✓ <i>No troubles detected, good condition or correct tests, according to vehicle age and mileage</i>			
! <i>Damages or malfunction detected that requires repairs by the buyer</i>			
NA <i>Not applicable</i>			
☐ <i>Not tested</i>			

## Disclaimer

Please also note the "UserGuide condition report", which shows the scope of the vehicle description.

[User Guide](#)