



## BMW X1 X1 xDrive20d Aut.

VIN NO WBAHU31010P921073  
Registration Number 010P921073



### MOT Date

2027-08-01

### Last Service



### Number of Owners

2

### Last Service Mileage



### Number of Keys

2

### First Registration Date

2015-11-17

### Odometer Reading

94651 km

### Country First Registered

Germany

## Inspection Report Summary

Customer	BCA Online	Report Number	P20251001111615
Inspection Date / Place	2025-10-01 / SULOJA Brackel	Cosmetic Grade	5

## Vehicle Summary

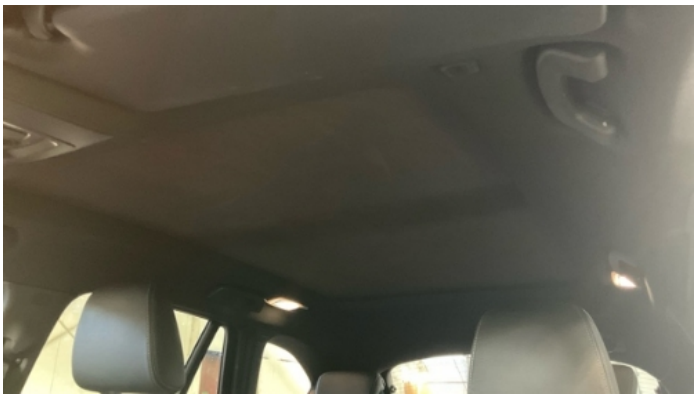
Vehicle Condition	Runner	VAT Type	Margin
Fuel Type	Diesel	Road Worthy	Yes
Colour	White	Engine Size (cc)	1995
Engine Size	2.0	No of Doors	5
Body Type	SUV	Drive Train	All-Wheel-Drive permanent
Seat Colour		No of Seats	5
Seat Covering Name	DAKOTA	Seat Covering	Synthetic Leather
Charging Cables		NEDC CO2 Rating (q/km)	123
Gearbox Type	Automatic		

## Vehicle History & Documents

Service Book Available	-	Next Service Mileage	km
Previous Usage		Imported	No
Manufacturer Warrenty			











## Equipment

Tinted Glass	USB Socket	Alloys wheels	Auxiliary Socket
Cruise control	Front fog lamps	Remote adjusting wing mirrors	Reversing Camera
Satellite navigation	Stability control	Electrically folding wing mirrors	LED Headlamps
Rain sensitive windscreen wipers	Trip Computer	Airbag Status	Anti-lock braking
Bluetooth telephone interface	Diesel particulate filter	Front parking sensors	Remote central locking
Roof rails	Split folding rear seats	CD Player	Leather steering wheel
Radio	Rear parking sensors		

## Equipment Details

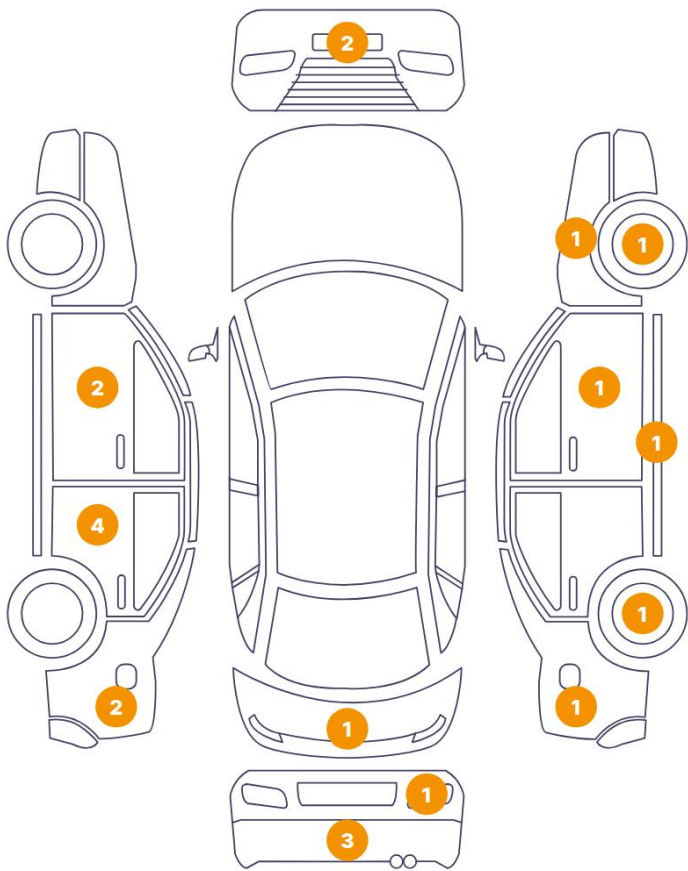
Air Conditioning	Dual Zone Climate Control	Alloy Wheel Size	18
Seat Heating	Front		

## Wheels & Tyres

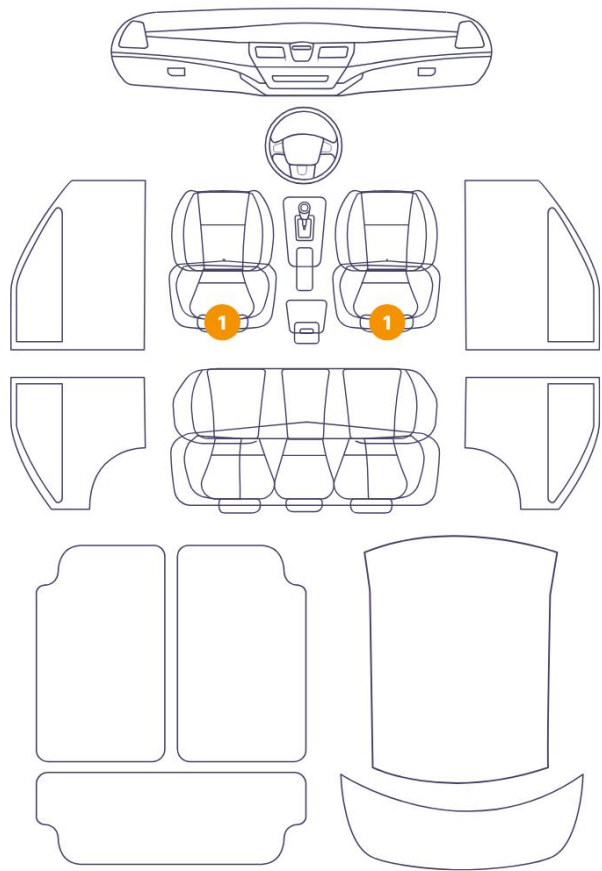
Left Rear Tyre Depth	5	Right Front Tyre Depth	5
Left Front Tyre Depth	5	Right Rear Tyre Depth	5

Cosmetic Damage

21 Schäden



2 Schäden



Component		Damage	Comments
1	Bumper / Front	Paint / Scratch / Scuff	
2	Grille / Front	Paint / Scratch / Scuff	
3	Door / Back Left	Paint / Poor Previous Repair	
4	Door Handle / Front Left	Paint / Scratch / Scuff	
5	Door / Back Left	Bodywork / Dent / Dent	
6	Door / Back Left	Paint / Scratch / Scuff	
7	Side Panel / Back Left	Bodywork / Dent / Dent	
8	Door / Back Left	Paint / Corrosion	
9	Side Panel / Back Left	Paint / Poor Previous Repair	
10	Bumper / Back	Paint / Scratch / Scuff	
11	Bumper / Back	Bodywork / Breakage / Crack	
12	Bumper / Back	Paint / Scratch / Scuff	

13	Tailgate	Paint / Scratch / Scuff
14	Back Light / Right	Glass Break / Impact
15	Rim / Back Right	Out of Bodywork / Scratch
16	Side Panel / Back Right	Bodywork / Dent / Dent
17	Rocker Panel / Center Right	Paint / Scratch / Scuff
18	Mirror / Front Right	Paint / Scratch / Scuff
19	Wing Expander / Front Right	Paint / Scratch / Scuff
20	Rim / Front Right	Out of Bodywork / Scratch
21	Backrest Cover / Front Right	Interior / Scratched
22	Backrest Cover / Front Left	Interior / Scratched
23	Door Joint / Front Left Middle	Bodywork / Breakage

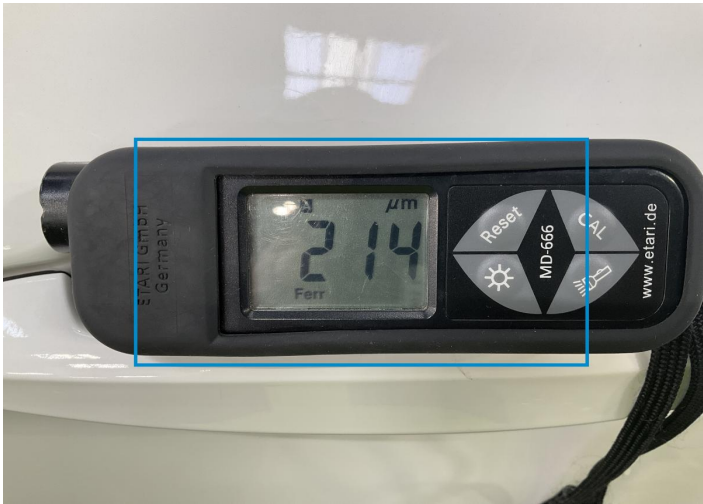




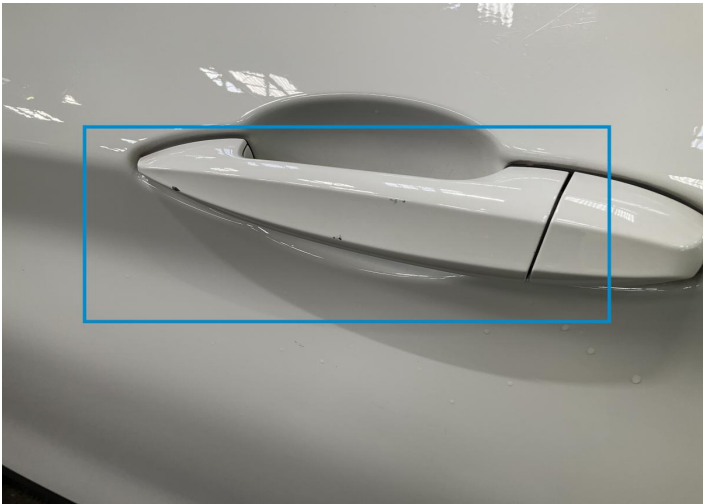
1. Bumper / Front  
Paint / Scratch / Scuff -



2. Grille / Front  
Paint / Scratch / Scuff -



3. Door / Back Left  
Paint / Poor Previous Repair -



4. Door Handle / Front Left  
Paint / Scratch / Scuff -

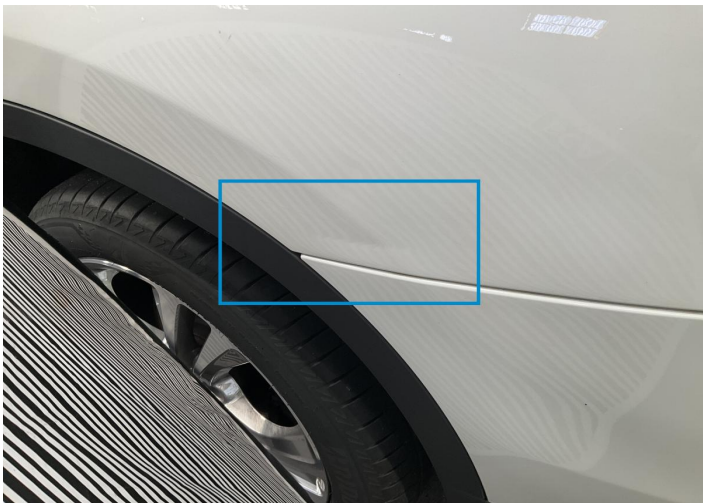


5. Door / Back Left  
Bodywork / Dent / Dent -



6. Door / Back Left  
Paint / Scratch / Scuff -

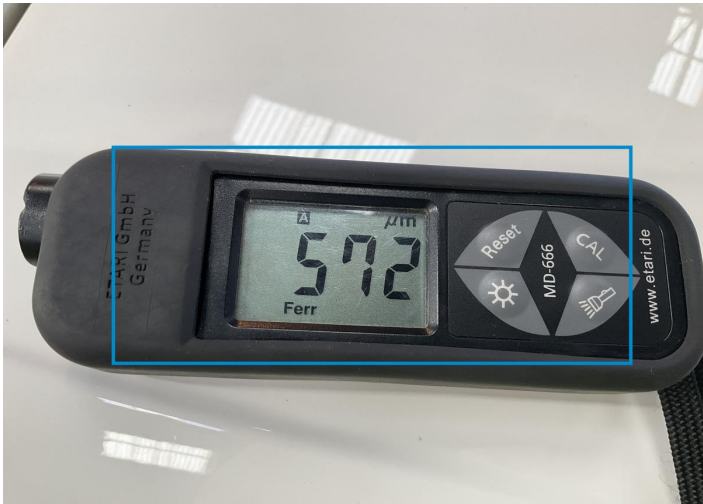




7. Side Panel / Back Left  
Bodywork / Dent / Dent -



8. Door / Back Left  
Paint / Corrosion -



9. Side Panel / Back Left  
Paint / Poor Previous Repair -



10. Bumper / Back  
Paint / Scratch / Scuff -



11. Bumper / Back  
Bodywork / Breakage / Crack -



12. Bumper / Back  
Paint / Scratch / Scuff -





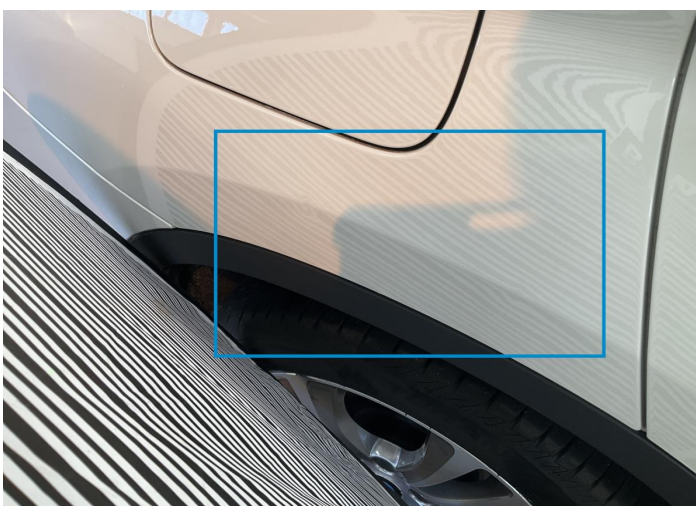
13. Tailgate  
Paint / Scratch / Scuff -



14. Back Light / Right  
Glass Break / Impact -



15. Rim / Back Right  
Out of Bodywork / Scratch -



16. Side Panel / Back Right  
Bodywork / Dent / Dent -



17. Rocker Panel / Center Right  
Paint / Scratch / Scuff -

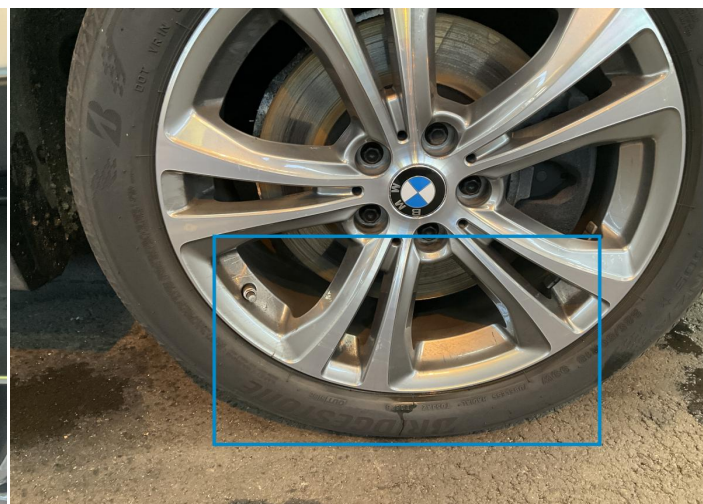


18. Mirror / Front Right  
Paint / Scratch / Scuff -





19. Wing Expander / Front Right  
Paint / Scratch / Scuff -



20. Rim / Front Right  
Out of Bodywork / Scratch -



21. Backrest Cover / Front Right  
Interior / Scratched -



22. Backrest Cover / Front Left  
Interior / Scratched -



23. Door Joint / Front Left Middle  
Bodywork / Breakage -



## Mechanical Condition

### Control Lights

ABS Warning Light	✓	ESP Fault/Traction Control Malfunction Light	✓
Diesel Particulate Filter Light	✓	Airbag Warning Light	✓
Oil Pressure Warning Light	✓	Brake Warning Light	✓
Power Steering Warning Light	✓	Alternator / Battery	✓
No Dashboard Lights	✓	Display Defect	✓
Service Light	!	Tire Pressure Monitoring System	✓

### Engine

Engine Status / EML	✓	Engine Leak Visible	✓
Engine Starts	✓		

### Gearbox

Gear Box	✓
----------	---

### Equipments Test

Electric Windows	✓	Navigation System	✓
Audio Equipment	✓	AC / Heating System	✓
Main & Spare Keys Functioning	✓	Parking Sensors / Cameras Functioning	✓

### Levels

Brakes Fluid	✓	Coolant Fluid	✓
--------------	---	---------------	---

Test Drive Inspection

Steering Wheel


Steering | Noise / Anomaly 

Engine


Engine Noise  The Gears Scratch / Skip / Abnormal Operation 

Fume Quantity  Power Loss 

Brake

Brake System Anomaly 

General

Test Driven Status 

 *No troubles detected, good condition or correct tests, according to vehicle age and mileage*

 *Damages or malfunction detected that requires repairs by the buyer*

 *Not applicable*

 *Not tested*

Disclaimer

*Please also note the "UserGuide condition report", which shows the scope of the vehicle description.*

[User Guide](#)