



BMW 3er 325d DPF Cabrio Aut.

VIN NO WBADY51090E696878
Registration Number 090E696878



MOT Date	Number of Owners	Number of Keys	Odometer Reading
2026-04-01	2	1	139810 km
Last Service	Last Service Mileage	First Registration Date	Country First Registered
2024-04-03	127105	2011-03-31	Germany

Inspection Report Summary

Customer	BCA Online	Report Number	P20250905100838
Inspection Date / Place	2025-09-05 / BCA Oberndorf	Cosmetic Grade	2

Vehicle Summary

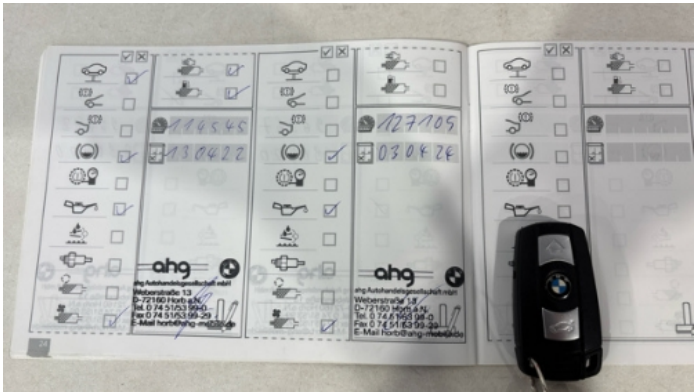
Vehicle Condition	Runner	VAT Type	Margin
Fuel Type	Diesel	Road Worthy	Yes
Colour	Brown	Engine Size (cc)	2993
Engine Size	3.0	No of Doors	2
Body Type	Convertible	Drive Train	Rear
Seat Colour		No of Seats	4
Seat Covering Name	Beige	Seat Covering	Leather
Charging Cables		NEDC CO2 Rating (q/km)	168
Gearbox Type	Automatic		

Vehicle History & Documents

Service Book Available	Present	Next Service Mileage	km
Previous Usage		Imported	No
Manufacturer Warrenty			







Equipment

Tow ball	Airbag Status	Ambientlighting	Auxiliary Socket
Cruise control	Front fog lamps	Remote adjusting wing mirrors	Satellite navigation
Xenon headlamps	Central locking	Electrically folding wing mirrors	Radio
USB Socket	Alloys wheels	Anti-lock braking	Bluetooth telephone interface
Diesel particulate filter	Front parking sensors	Remote central locking	Stability control
CD Player	Electrically adjustable seats	Leather steering wheel	Rear parking sensors

Equipment Details

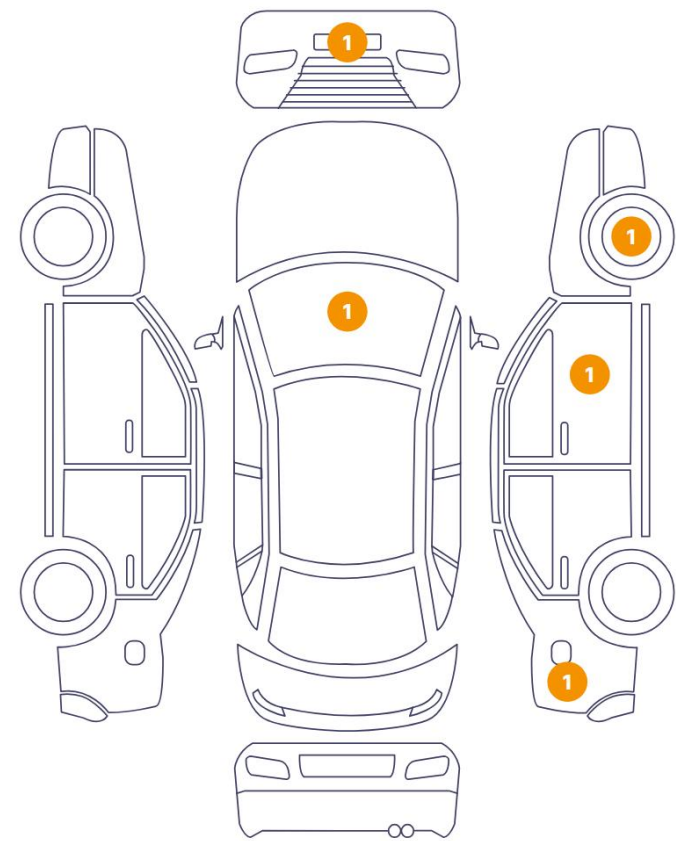
Tow Ball Type	Pivoted	Air Conditioning	Three Zone Climate Control
Alloy Wheel Size	17	Seat Heating	Front

Wheels & Tyres

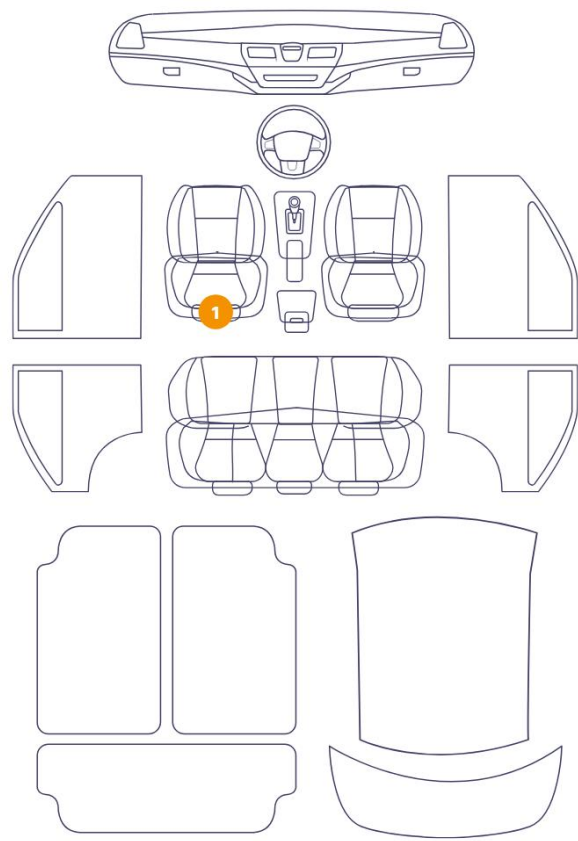
Right Front Tyre Depth	5	Left Front Tyre Depth	5
Right Rear Tyre Depth	5	Left Rear Tyre Depth	5

Cosmetic Damage

5 Schäden



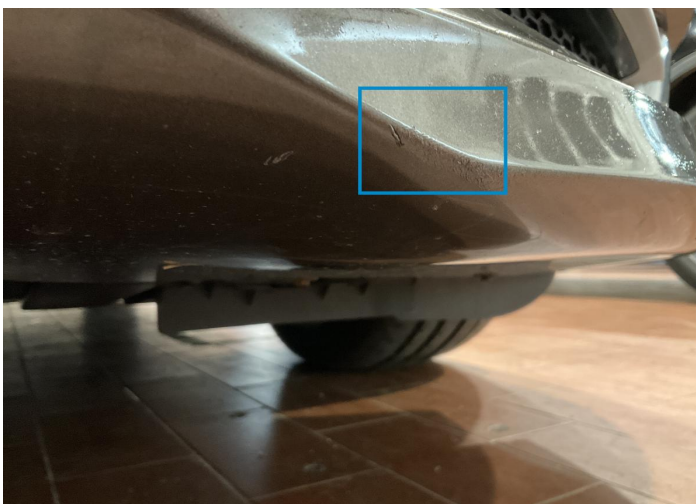
1 Schäden



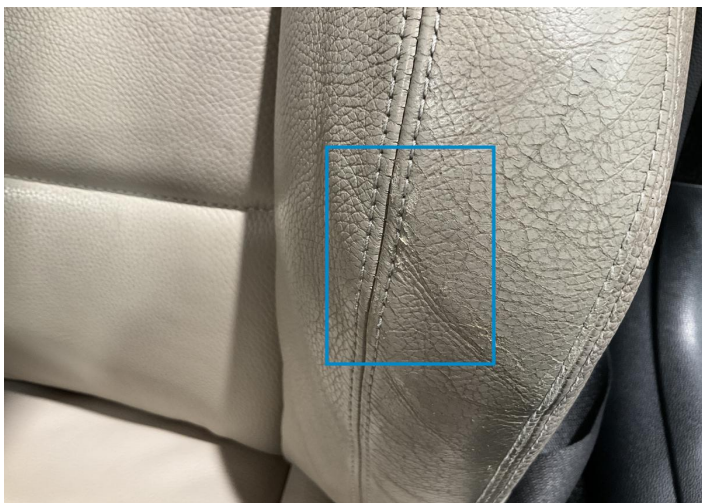
Component		Damage	Comments
1	Windshield / Front	Glass Break / Impact	
2	Bumper / Front	Paint / Stone Chip	
3	Seat / Front Left	Interior / Scratched	
4	Fender / Back Right	Paint / Scratch / Line	
5	Mirror / Front Right	Paint / Scratch / Scuff	
6	Rim / Front Right	Out of Bodywork / Scratch	



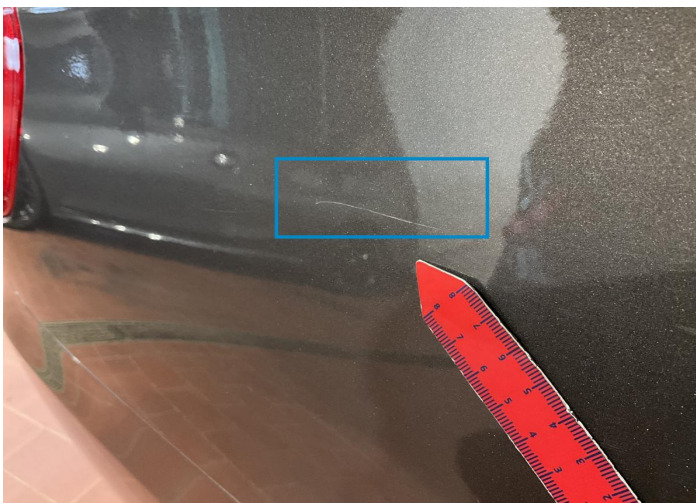
1. Windshield / Front
Glass Break / Impact -



2. Bumper / Front
Paint / Stone Chip -



3. Seat / Front Left
Interior / Scratched -



4. Fender / Back Right
Paint / Scratch / Line -



5. Mirror / Front Right
Paint / Scratch / Scuff -



6. Rim / Front Right
Out of Bodywork / Scratch -

Mechanical Condition

Control Lights

Display Defect	✓	Service Light	✓
ABS Warning Light	✓	ESP Fault/Traction Control Malfunction Light	✓
Diesel Particulate Filter Light	✓	Airbag Warning Light	✓
Oil Pressure Warning Light	✓	Brake Warning Light	✓
Power Steering Warning Light	✓	Alternator / Battery	✓
No Dashboard Lights	✓		

Equipments Test

Central Locking	✓	Main & Spare Keys Functioning	✓
Electric Windows	✓	Audio Equipment	✓
Parking Sensors / Cameras Functioning	✓	AC / Heating System	✓
Other Equipments	✓		

Engine

Engine Status / EML	✓	Engine Leak Visible	✓
Engine Starts	✓		

Gearbox

Gear Box	✓
----------	---

Levels

Brakes Fluid	✓	Coolant Fluid	✓
--------------	---	---------------	---

Test Drive Inspection

Steering Wheel			
Steering Noise / Anomaly		✔	
Engine			
Engine Noise	✔	The Gears Scratch / Skip / Abnormal Operation	✔
Fume Quantity	✔	Power Loss	✔
Brake			
Brake System Anomaly		✔	
General			
Test Driven Status		Not Performed	
✔ <i>No troubles detected, good condition or correct tests, according to vehicle age and mileage</i>			
❗ <i>Damages or malfunction detected that requires repairs by the buyer</i>			
NA <i>Not applicable</i>			
☐ <i>Not tested</i>			

Disclaimer

Please also note the "UserGuide condition report", which shows the scope of the vehicle description.

[User Guide](#)