



# BMW 3er 320d Touring xDrive Aut.

VIN NO WBA8J11030K628639  
Registration Number 030K628639



MOT Date	Number of Owners	Number of Keys	Odometer Reading
2027-05-01	3	2	142342 km
Last Service	Last Service Mileage	First Registration Date	Country First Registered
-	-	2016-02-22	Germany

## Inspection Report Summary

Customer	BCA Online	Report Number	P20250922102050
Inspection Date / Place	2025-09-22 / BCA Oberndorf	Cosmetic Grade	3

## Vehicle Summary

Vehicle Condition	Runner	VAT Type	Margin
Fuel Type	Diesel	Road Worthy	Yes
Colour	White	Engine Size (cc)	1995
Engine Size	2.0	No of Doors	5
Body Type	Stationwagon / Estate	Drive Train	All-Wheel-Drive permanent
Seat Colour		No of Seats	5
Seat Covering Name		Seat Covering	Cloth/Leather
Charging Cables		NEDC CO2 Rating (q/km)	124
Gearbox Type	Automatic		

## Vehicle History & Documents

Service Book Available	Incomplete	Next Service Mileage	km
Previous Usage		Imported	No
Manufacturer Warrenty			











Equipment

Tow ball	Airbag Status	Anti-lock braking	Bluetooth telephone interface
Diesel particulate filter	Front parking sensors	Remote central locking	Satellite navigation
Stability control	Electrically folding wing mirrors	Keyless Entry	LED Headlamps
Rear parking sensors	USB Socket	Alloys wheels	Auxiliary Socket
Cruise control	Front fog lamps	Remote adjusting wing mirrors	Roof rails
Split folding rear seats	Sunroof	Electric tailgate	Leather steering wheel
Radio			

Equipment Details

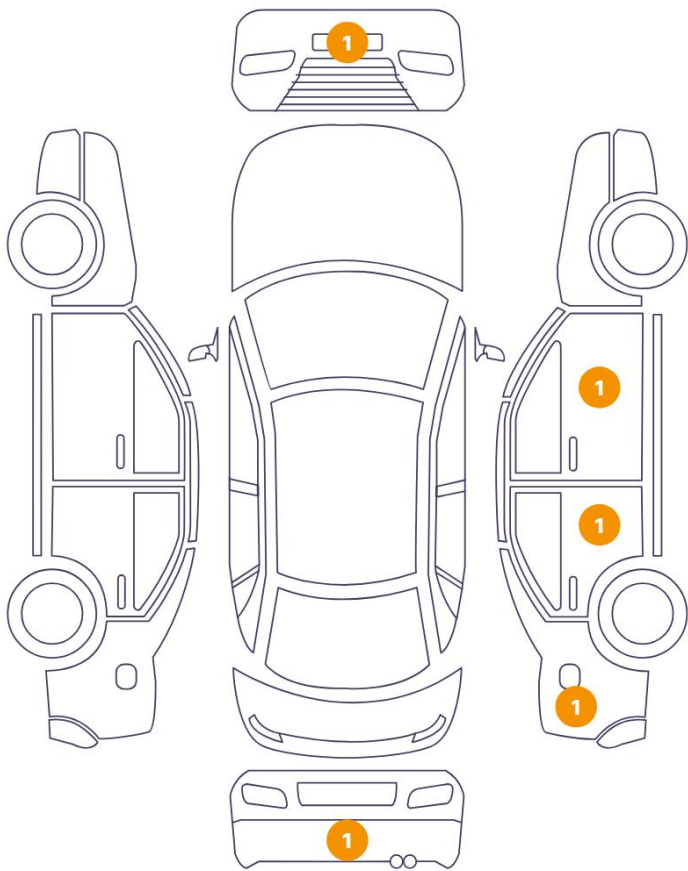
Tow Ball Type	Electronic	Air Conditioning	Dual Zone Climate Control
Alloy Wheel Size	16	Extra Wheel / Tyre Set	Winter Tyres - Alloy
Seat Heating	Front	Sunroof Type	Opening Panoramic

Wheels & Tyres

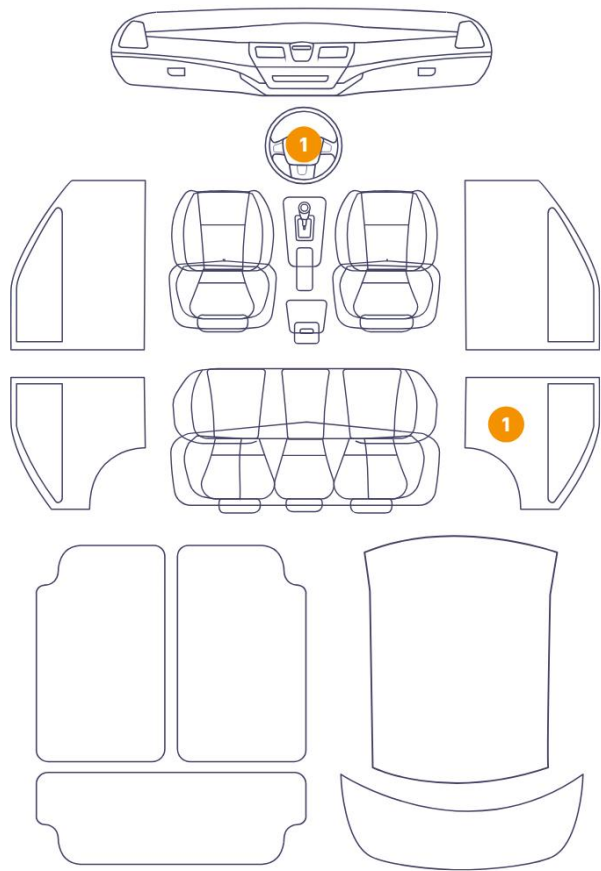
Right Front Tyre Depth	5	Left Front Tyre Depth	5
Right Rear Tyre Depth	4	Left Rear Tyre Depth	4
Extra Wheel - 1 Tyre Depth	7	Extra Wheel - 2 Tyre Depth	7
Extra Wheel - 3 Tyre Depth	7	Extra Wheel - 4 Tyre Depth	7

Cosmetic Damage

5 Schäden



2 Schäden



Component		Damage	Comments
1	Panel Filling / Back Right	Interior / Scratched	
2	Steering Wheel / Front	Interior / Scratched	
3	Bumper / Back	Paint / Scratch / Scuff	
4	Bumper / Front	Paint / Scratch / Scuff	
5	Mirror Shell / Front Right	Paint / Scratch / Scuff	
6	Door / Back Right	Paint / Scratch / Scuff	
7	Side Panel / Back Right	Bodywork / Dent / Dent	





1. Panel Filling / Back Right  
Interior / Scratched -



2. Steering Wheel / Front  
Interior / Scratched -



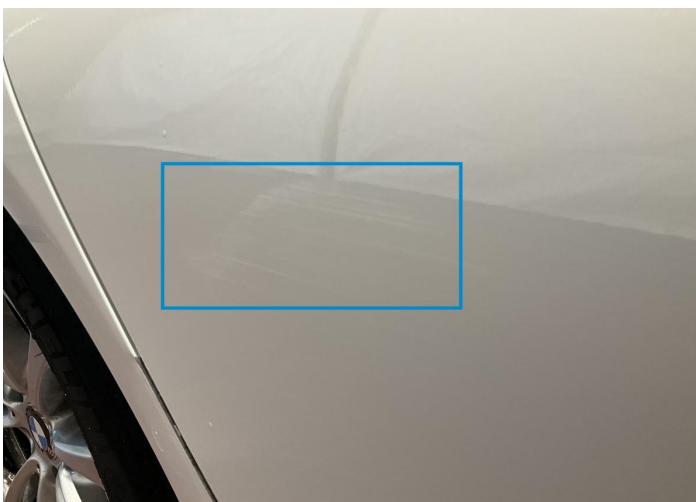
3. Bumper / Back  
Paint / Scratch / Scuff -



4. Bumper / Front  
Paint / Scratch / Scuff -



5. Mirror Shell / Front Right  
Paint / Scratch / Scuff -



6. Door / Back Right  
Paint / Scratch / Scuff -



7. Side Panel / Back Right  
Bodywork / Dent / Dent -



## Mechanical Condition

### Control Lights

Display Defect	✓	Service Light	✓
ABS Warning Light	✓	ESP Fault/Traction Control Malfunction Light	✓
Diesel Particulate Filter Light	✓	Airbag Warning Light	✓
Oil Pressure Warning Light	✓	Brake Warning Light	✓
Power Steering Warning Light	✓	Alternator / Battery	✓
No Dashboard Lights	✓		

### Equipments Test

Central Locking	✓	Main & Spare Keys Functioning	❗
Electric Windows	✓	Audio Equipment	✓
Parking Sensors / Cameras Functioning	✓	AC / Heating System	✓

### Engine

Engine Status / EML	✓	Engine Leak Visible	✓
Engine Starts	✓		

### Gearbox

Gear Box	✓
----------	---

### Levels

Coolant Fluid	✓
---------------	---

Test Drive Inspection

Steering Wheel

Steering | Noise / Anomaly 





Engine

Engine Noise  Fume Quantity 

Power Loss 

General

Test Driven Status Not Performed

-  No troubles detected, good condition or correct tests, according to vehicle age and mileage
-  Damages or malfunction detected that requires repairs by the buyer
-  Not applicable
-  Not tested

Disclaimer

Please also note the "UserGuide condition report", which shows the scope of the vehicle description. [User Guide](#)