



BMW X3 X3 xDrive30d Aut.

VIN NO WBA85BZ040N137896
Registration Number 040N137896



MOT Date

2025-05-01

Last Service

2025-04-23

Number of Owners

1

Last Service Mileage

149588

Number of Keys

2

First Registration Date

2022-05-05

Odometer Reading

151454 km

Country First Registered

Germany

Inspection Report Summary

Customer	BCA Online	Report Number	P20250917105324
Inspection Date / Place	2025-09-17 / BCA Oberndorf	Cosmetic Grade	3

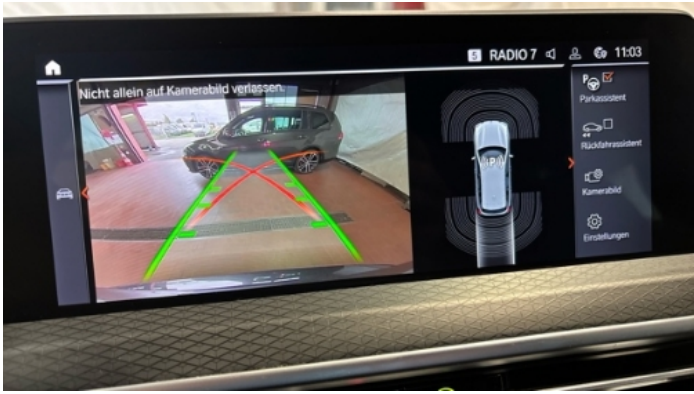
Vehicle Summary

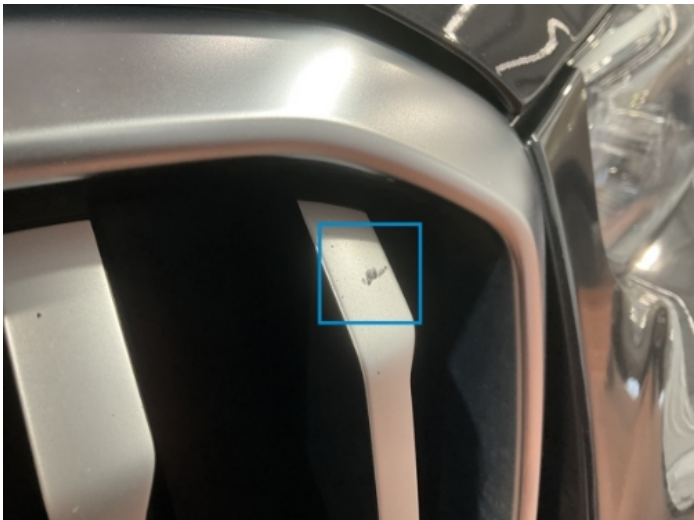
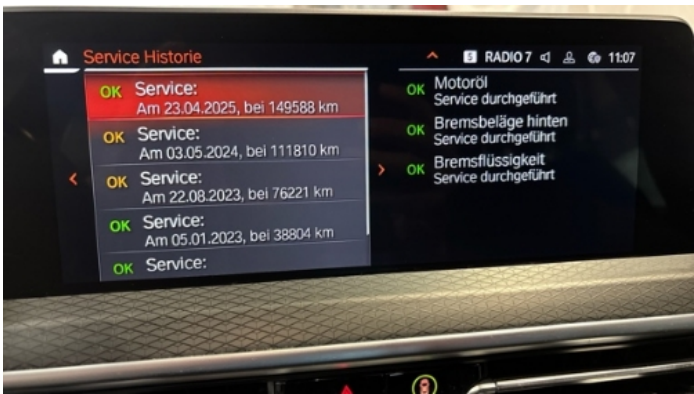
Vehicle Condition	Runner	VAT Type	Qualifying
Fuel Type	Diesel	Road Worthy	Yes
Colour	Grey	Engine Size (cc)	2993
Engine Size	3.0	No of Doors	5
Body Type	SUV	Drive Train	All-Wheel-Drive permanent
Seat Colour		No of Seats	5
Seat Covering Name		Seat Covering	Synthetic Leather
Charging Cables		WLTP CO2 Emissions	
Gearbox Type	Automatic		

Vehicle History & Documents

Service Book Available	Present	Next Service Mileage	km
Previous Usage		Imported	No
Manufacturer Warranty			







Equipment

USB Socket	Alloys wheels	AndroidAuto	AppleCarPlay
Cruise control	Digital Radio	Parking Assistance	Remote central locking
Roof rails	Split folding rear seats	Sunroof	Electrictailgate
LED Headlamps	Rear parking sensors	Airbag Status	Ambientlighting
Anti-lock braking	Bluetooth telephone interface	Diesel particulate filter	Front parking sensors
Remote adjusting wing mirrors	Reversing Camera	Satellite navigation	Stability control
Electrically folding wing mirrors	Leather steering wheel	Radio	Rear sunblind

Equipment Details

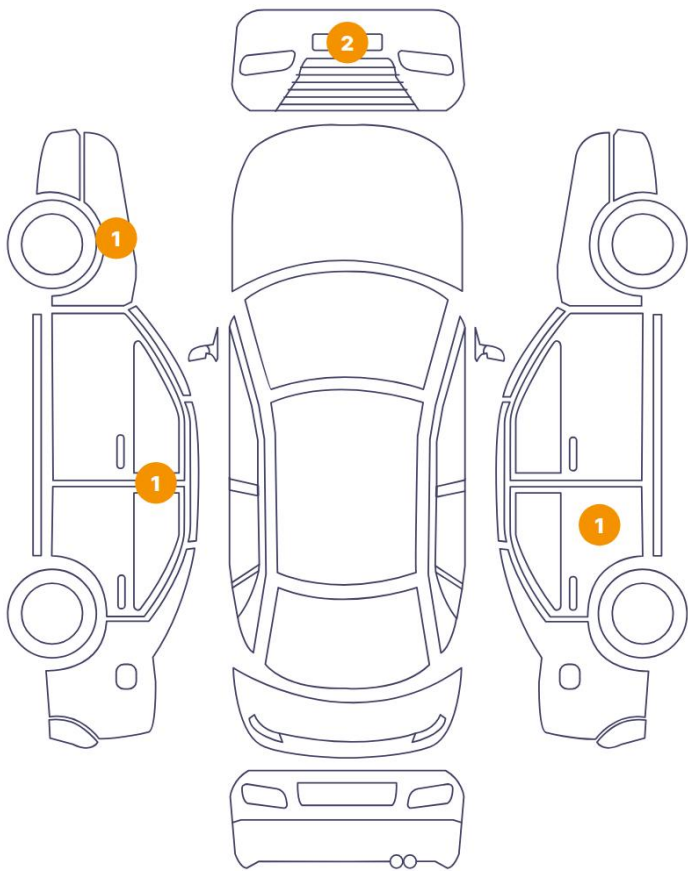
Air Conditioning	Three Zone Climate Control	Alloy Wheel Size	19
Seat Heating	Front and Rear	Sunroof Type	Opening Panoramic

Wheels & Tyres

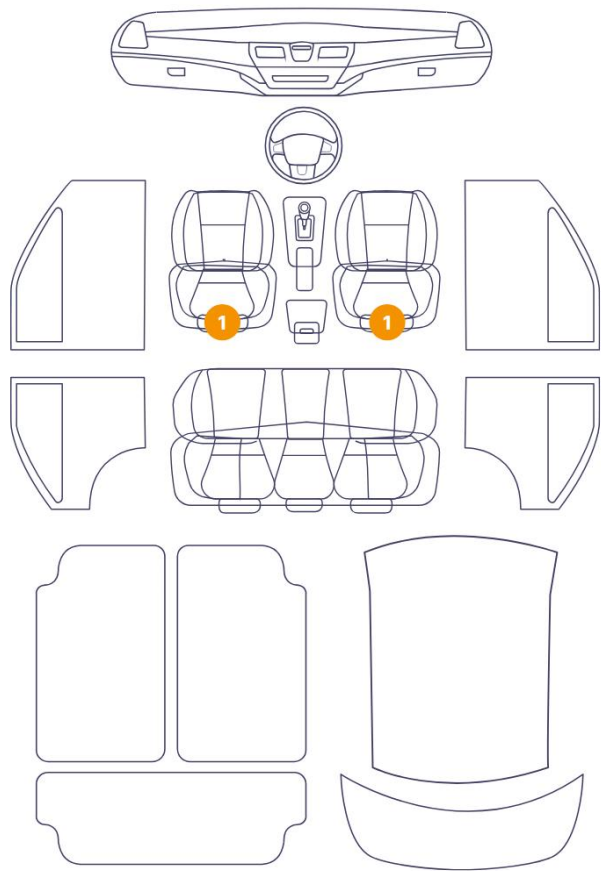
Left Front Tyre Depth	5	Right Rear Tyre Depth	4
Left Rear Tyre Depth	4	Right Front Tyre Depth	5

Cosmetic Damage

5 Schäden



2 Schäden



Component	Damage	Comments
1 Pillar / Back Right	Paint / Scratch / Scuff	
2 Backrest Cover / Front Right	Interior / Scratched	
3 Seat / Front Left	Interior / Scratched	
4 B Pillar / Center Left	Paint / Scratch / Scuff	
5 Fender / Front Left	Paint / Poor Previous Repair	
6 Bumper / Front	Bodywork / Dent / Dent	
7 Grille / Front	Paint / Scratch / Scuff	



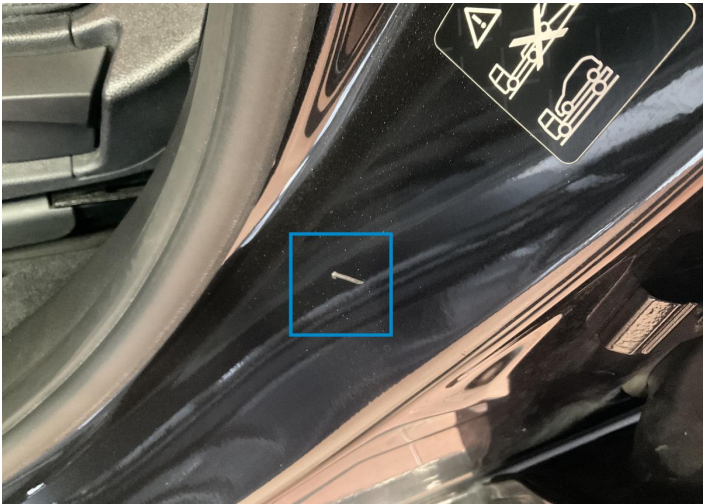
1. Pillar / Back Right
Paint / Scratch / Scuff -



2. Backrest Cover / Front Right
Interior / Scratched -



3. Seat / Front Left
Interior / Scratched -



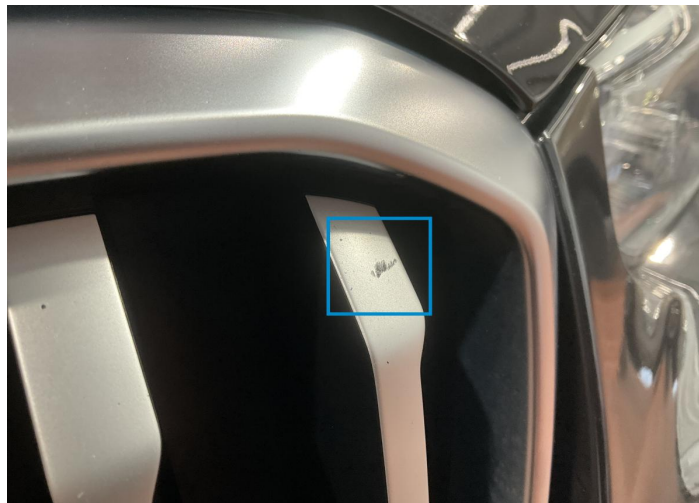
4. B Pillar / Center Left
Paint / Scratch / Scuff -



5. Fender / Front Left
Paint / Poor Previous Repair -



6. Bumper / Front
Bodywork / Dent / Dent -



7. Grille / Front
Paint / Scratch / Scuff -

Mechanical Condition

Equipments Test

Central Locking	✓	Electric Windows	✓
Navigation System	✓	Audio Equipment	✓
AC / Heating System	✓	Main & Spare Keys Functioning	✓
Parking Sensors / Cameras Functioning	✓		

Control Lights

ABS Warning Light	✓	ESP Fault/Traction Control Malfunction Light	✓
Diesel Particulate Filter Light	✓	Airbag Warning Light	✓
Oil Pressure Warning Light	✓	Brake Warning Light	✓
Power Steering Warning Light	✓	Alternator / Battery	✓
No Dashboard Lights	✓	Display Defect	✓
Service Light	✓		

Engine

Engine Status / EML	✓	Engine Leak Visible	✓
Engine Starts	✓		

Gearbox

Gear Box	✓
----------	---

Levels

Coolant Fluid	✓
---------------	---

Test Drive Inspection

Steering Wheel

Steering | Noise / Anomaly 





Engine

Engine Noise  Fume Quantity 

Power Loss 

General

Test Driven Status Not Performed

-  No troubles detected, good condition or correct tests, according to vehicle age and mileage
-  Damages or malfunction detected that requires repairs by the buyer
-  Not applicable
-  Not tested

Disclaimer

Please also note the "UserGuide condition report", which shows the scope of the vehicle description. [User Guide](#)