



BMW 218: H778NP

Vinnnummer:	WBA6V710405R37565	Versionname:	218iA 103kW GT
First Registrationdate:	18/03/2020	Fiscalpower:	
Expertise Mileage:	75536	Power Kw:	103
Bodytype:		Body colour:	Mineralgrau metallic
Gearbox:	Automatic	Paint type:	Metalic
Transmission:	Front	Type of rims (mounted):	Aluminium
Fueltype:	Petrol	Parking lot:	568
Number of seats:	5		
Type of rims (mounted):	Aluminium		
Maintenance needed:	No		

Options

Number of keys total	2	Telephone equipment	
GPS		Lining leather	
Autom climate control		Central consol F	
Windows electric F		Luggage cover	
Radio multimedia		Headlights Xenon/LED/Laser	
		Front parking sensors	
		Rear parking sensors	
		Tow bar removable	

Degree of wear

205/60/16/96 H				
Winter tyres:	Fr.L.	Continental: 4,8 mm	Fr.R.	Continental: 4,6 mm
	Re.L.	Continental: 6,2 mm	Re.R.	Continental: 6,5 mm
Tyre profile depth FL				4.8
Tyre profile depth FR				4.6
Tyre profile depth RL				6.2
Tyre profile depth RR				6.5
Tyre size FL				205/60 R 16 96 H
Tyre size FR				205/60 R 16 96 H
Tyre size RL				205/60 R 16 96 H
Tyre size RR				205/60 R 16 96 H
Tyre type FL				Winter
Tyre type FR				Winter
Tyre type RL				Winter
Tyre type RR				Winter
Tyre make FL				256
Tyre make FR				256
Tyre make RL				256
Tyre make RR				256

Assistance equipment

Number of charging cables (normal)	0
Number of charging cables (rapid charge)	0

Door FL, Scratch(es), Repair and paint (complete)



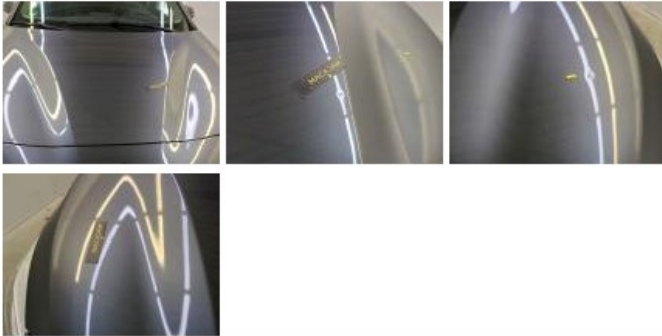
Door RL, Scratch(es), Repair and paint (complete)



Wing RL, Dent(s) and scratch(es), Repair and paint (complete)



Bonnet, Hail damage, Paintless dent repair (hail)



Bodywork, Paint measurement, Acceptable



Roof, Hail damage, Paintless dent repair (hail)

