



BMW 2er Active Tourer 218i Active Tourer Aut.

VIN NO WBA6S11050VF80549
Registration Number 050VF80549



MOT Date	Number of Owners	Number of Keys	Odometer Reading
2027-06-01	2	2	52729 km
Last Service	Last Service Mileage	First Registration Date	Country First Registered
2025-07-14	50773	2018-05-23	Germany

Inspection Report Summary

Customer	BCA Online	Report Number	P20250930125120
Inspection Date / Place	2025-09-30 / SULOJA Mönchengladbach	Cosmetic Grade	2

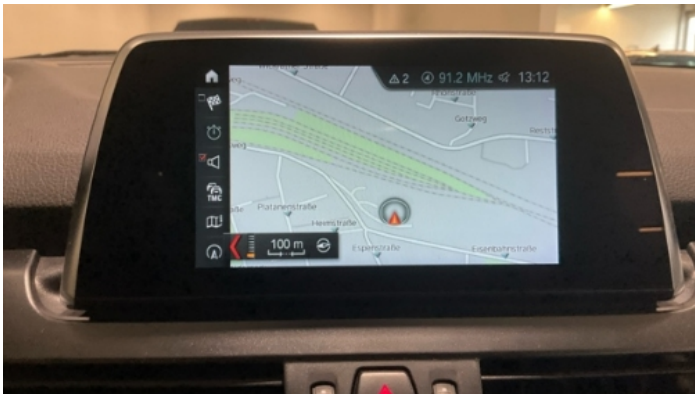
Vehicle Summary

Vehicle Condition	Runner	VAT Type	Margin
Fuel Type	Petrol	Road Worthy	Yes
Colour	Black	Engine Size (cc)	1499
Engine Size	1.5	No of Doors	5
Body Type	Stationwagon / Estate	Drive Train	Front
Seat Colour		No of Seats	5
Seat Covering Name		Seat Covering	Cloth/Synthetic Leather
Charging Cables		NEDC CO2 Rating (q/km)	117
Gearbox Type	Automatic		

Vehicle History & Documents

Service Book Available	Present	Next Service Mileage	km
Previous Usage		Imported	No
Manufacturer Warrenty			







Equipment

Tow ball	USB Socket	Alloys wheels	AppleCarPlay
Cruise control	Front parking sensors	Remote central locking	Satellite navigation
CD Player	Electrically folding wing mirrors	Laneassist	LED Headlamps
Rear parking sensors	Trafficsignrecognition	Airbag Status	Anti-lock braking
Bluetooth telephone interface	Digital Radio	Remote adjusting wing mirrors	Reversing Camera
Stability control	Central locking	Electrictailgate	Leather steering wheel
Rain sensitive windscreen wipers			

Equipment Details

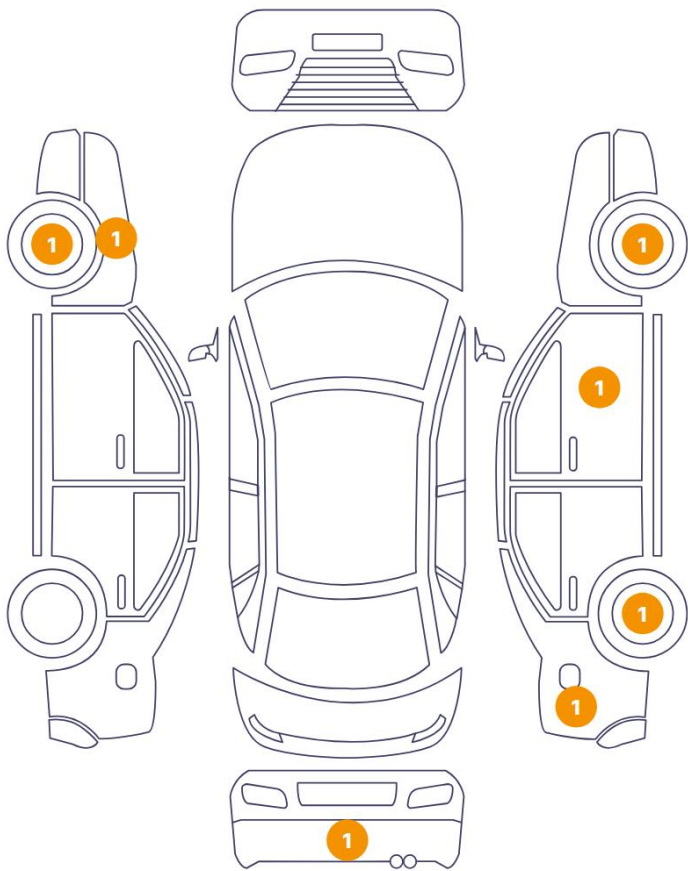
Tow Ball Type	Detachable	Air Conditioning	Yes
Alloy Wheel Size	17	Seat Heating	Front

Wheels & Tyres

Right Front Tyre Depth	6	Left Front Tyre Depth	6
Right Rear Tyre Depth	5	Left Rear Tyre Depth	5

Cosmetic Damage

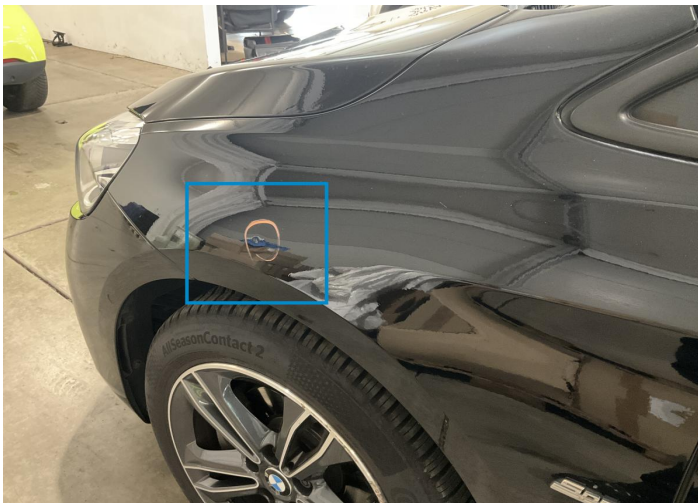
7 Schäden



0 Schäden



Component	Damage	Comments
1 Fender / Front Left	Bodywork / Dent / Dent	
2 Rim / Front Left	Out of Bodywork / Scratch	
3 Bumper / Back	Paint / Scratch / Scuff	
4 Rim / Front Right	Out of Bodywork / Scratch	
5 Door / Front Right	Bodywork / Dent / Dent	
6 Side Panel / Back Right	Bodywork / Dent / Dent	
7 Rim / Back Right	Out of Bodywork / Scratch	



1. Fender / Front Left
Bodywork / Dent / Dent -



2. Rim / Front Left
Out of Bodywork / Scratch -



3. Bumper / Back
Paint / Scratch / Scuff -



4. Rim / Front Right
Out of Bodywork / Scratch -



5. Door / Front Right
Bodywork / Dent / Dent -



6. Side Panel / Back Right
Bodywork / Dent / Dent -



7. Rim / Back Right
Out of Bodywork / Scratch -

Mechanical Condition

Control Lights

ABS Warning Light	✓	ESP Fault/Traction Control Malfunction Light	✓
Airbag Warning Light	✓	Oil Pressure Warning Light	✓
Brake Warning Light	✓	Power Steering Warning Light	✓
Alternator / Battery	✓	No Dashboard Lights	✓
Display Defect	✓	Service Light	✓
Tire Pressure Monitoring System	✓		

Engine

Engine Status / EML	✓	Engine Leak Visible	✓
Engine Starts	✓		

Gearbox

Gear Box	✓
----------	---

Levels

Brakes Fluid	✓	Coolant Fluid	✓
--------------	---	---------------	---

Equipments Test

Central Locking	✓	Main & Spare Keys Functioning	✓
Electric Windows	✓	Navigation System	✓
Audio Equipment	✓	Parking Sensors / Cameras Functioning	✓
AC / Heating System	✓	Other Equipments	✓

Test Drive Inspection

Engine			
Engine Noise	✓	The Gears Scratch / Skip / Abnormal Operation	✓
Fume Quantity	✓	Power Loss	✓
Brake			
Brake System Anomaly	✓		
Steering Wheel			
Steering Noise / Anomaly	✓		
General			
Test Driven Status	Not Performed		
✓	No troubles detected, good condition or correct tests, according to vehicle age and mileage		
!	Damages or malfunction detected that requires repairs by the buyer		
NA	Not applicable		
☐	Not tested		

Disclaimer

Please also note the "UserGuide condition report", which shows the scope of the vehicle description.

[User Guide](#)