



# BMW 3er 320d Touring Aut.

VIN NO WBA6L51050FJ63556  
Registration Number 050FJ63556



## MOT Date

2026-09-01

## Last Service

2025-05-28

## Number of Owners

1

## Last Service Mileage

186613

## Number of Keys

2

## First Registration Date

2021-08-13

## Odometer Reading

197853 km

## Country First Registered

Germany

## Inspection Report Summary

Customer	BCA Online	Report Number	P20250918120153
Inspection Date / Place	2025-09-18 / BCA Oberndorf	Cosmetic Grade	3

## Vehicle Summary

Vehicle Condition	Runner	VAT Type	Qualifying
Fuel Type	Diesel	Road Worthy	Yes
Colour	White	Engine Size (cc)	1995
Engine Size	2.0	No of Doors	5
Body Type	Stationwagon / Estate	Drive Train	Rear
Seat Colour		No of Seats	5
Seat Covering Name		Seat Covering	Synthetic Leather
Charging Cables		NEDC CO2 Rating (q/km)	114
Gearbox Type	Automatic		

## Vehicle History & Documents

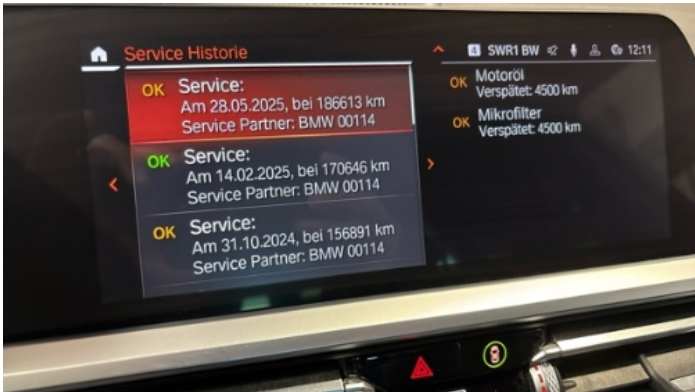
Service Book Available	Present	Next Service Mileage	km
Previous Usage		Imported	No
Manufacturer Warrenty			

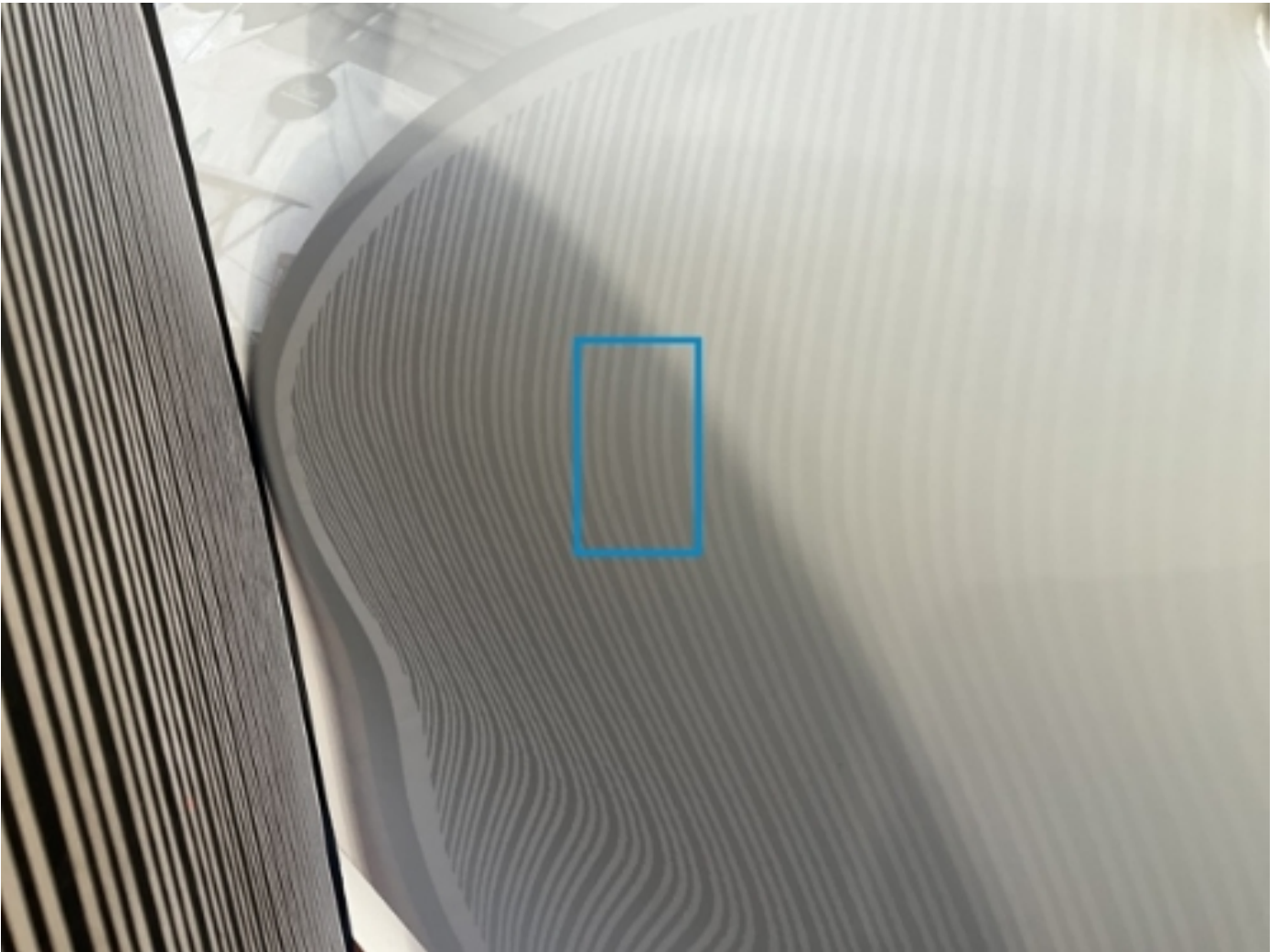












Equipment

Tinted Glass	USB Socket	Alloys wheels	AndroidAuto
AppleCarPlay	Cruise control	Digital Radio	Front fog lamps
Head up Display	Remote adjusting wing mirrors	Reversing Camera	Satellite navigation
Stability control	Electrically folding wing mirrors	Keyless Entry	LED Headlamps
Rear parking sensors	Tow ball	Airbag Status	Ambientlighting
Anti-lock braking	Bluetooth telephone interface	Diesel particulate filter	Digitaldashboard
Front parking sensors	Parking Assistance	Remote central locking	Roof rails
Split folding rear seats	Sunroof	Electrictailgate	Leather steering wheel
Radio			

Equipment Details

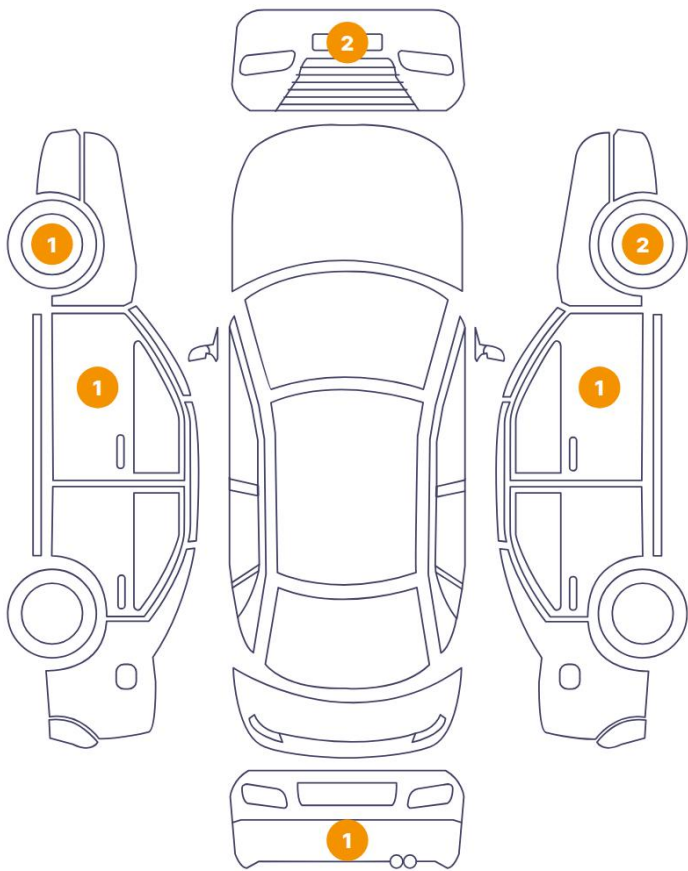
Tow Ball Type	Electronic	Air Conditioning	Three Zone Climate Control
Alloy Wheel Size	19	Seat Heating	Front
Sunroof Type	Slide Steel		

Wheels & Tyres

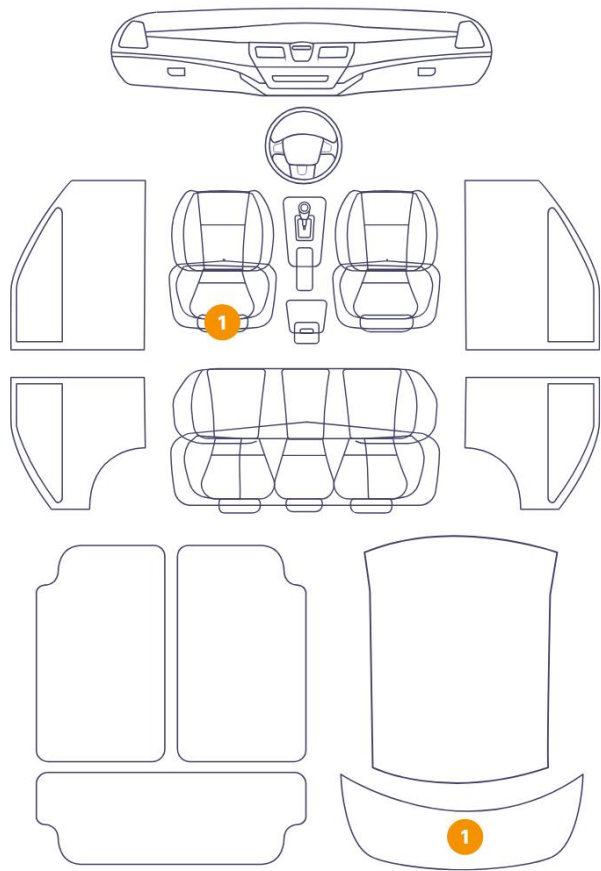
Right Front Tyre Depth	5	Left Front Tyre Depth	5
Right Rear Tyre Depth	5	Left Rear Tyre Depth	5

Cosmetic Damage

8 Schäden

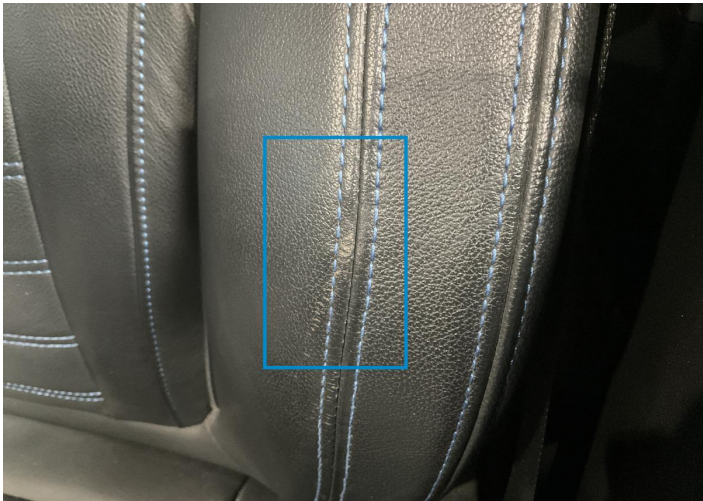


2 Schäden



Component		Damage	Comments
1	Backrest Cover / Front Left	Interior / Scratched	
2	Tailgate Upholstery / Back	Interior / Scratched	
3	Door / Front Right	Paint / Poor Previous Repair	
4	Rim / Front Left	Out of Bodywork / Scratch	
5	Door / Front Left	Bodywork / Dent / Dent	
6	Bumper / Front	Paint / Scratch / Scuff	
7	Bumper / Front	Paint / Poor Previous Repair	
8	Rim / Front Right	Out of Bodywork / Scratch	
9	Rim / Front Right	Out of Bodywork / Scratch	
10	Bumper / Back	Paint / Scratch / Scuff	





1. Backrest Cover / Front Left  
Interior / Scratched -



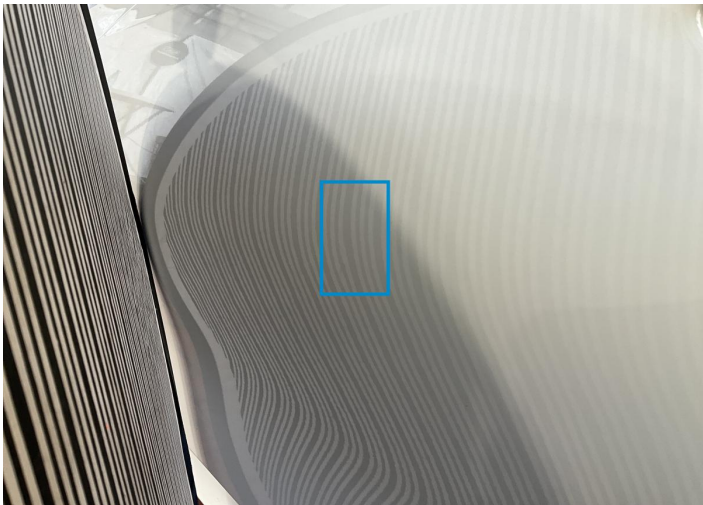
2. Tailgate Upholstery / Back  
Interior / Scratched -



3. Door / Front Right  
Paint / Poor Previous Repair -



4. Rim / Front Left  
Out of Bodywork / Scratch -



5. Door / Front Left  
Bodywork / Dent / Dent -



6. Bumper / Front  
Paint / Scratch / Scuff -





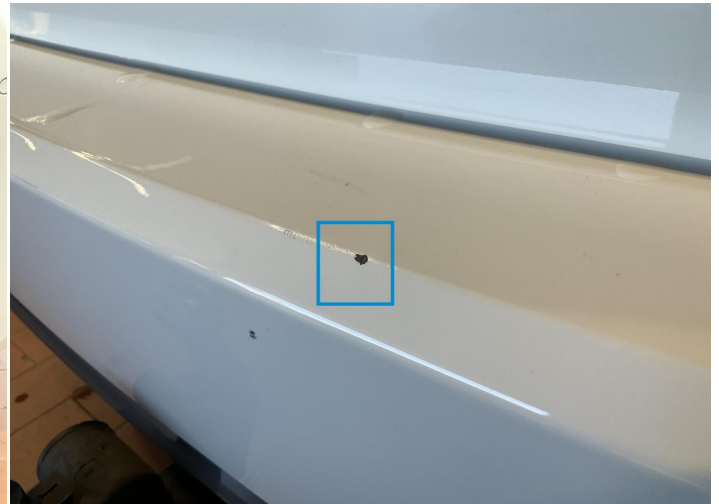
7. Bumper / Front  
Paint / Poor Previous Repair -



8. Rim / Front Right  
Out of Bodywork / Scratch -



9. Rim / Front Right  
Out of Bodywork / Scratch -



10. Bumper / Back  
Paint / Scratch / Scuff -

## Mechanical Condition

### Equipments Test

Central Locking	✓	Electric Windows	✓
Navigation System	✓	Audio Equipment	✓
AC / Heating System	✓	Main & Spare Keys Functioning	!
Parking Sensors / Cameras Functioning	✓		

### Control Lights

ABS Warning Light	✓	ESP Fault/Traction Control Malfunction Light	✓
Diesel Particulate Filter Light	✓	Airbag Warning Light	✓
Oil Pressure Warning Light	✓	Brake Warning Light	✓
Power Steering Warning Light	✓	Alternator / Battery	✓
No Dashboard Lights	✓	Display Defect	✓
Service Light	✓		

### Engine

Engine Status / EML	✓	Engine Leak Visible	NA
Engine Starts	✓		

### Gearbox

Gear Box	✓
----------	---

## Test Drive Inspection

### Steering Wheel

Steering   Noise / Anomaly	✓
----------------------------	---

### Engine

Engine Noise	✓	Fume Quantity	✓
Power Loss	✓		

### General

Test Driven Status	Not Performed
--------------------	---------------



- ✔ *No troubles detected, good condition or correct tests, according to vehicle age and mileage*
- ❗ *Damages or malfunction detected that requires repairs by the buyer*
- NA *Not applicable*
- ☐ *Not tested*

## Disclaimer

---

*Please also note the "UserGuide condition report", which shows the scope of the vehicle description.*

[User Guide](#)