



## BMW 5er 530d Touring Aut.

VIN NO WBA5K11000G333825  
Registration Number 000G333825



### MOT Date

2027-01-01

### Last Service



### Number of Owners

2

### Last Service Mileage



### Number of Keys

2

### First Registration Date

2016-12-01

### Odometer Reading

113305 km

### Country First Registered

Germany

## Inspection Report Summary

Customer	BCA Online	Report Number	P20250228115036
Inspection Date / Place	2025-02-28 / SULOJA Brackel	Cosmetic Grade	5

## Vehicle Summary

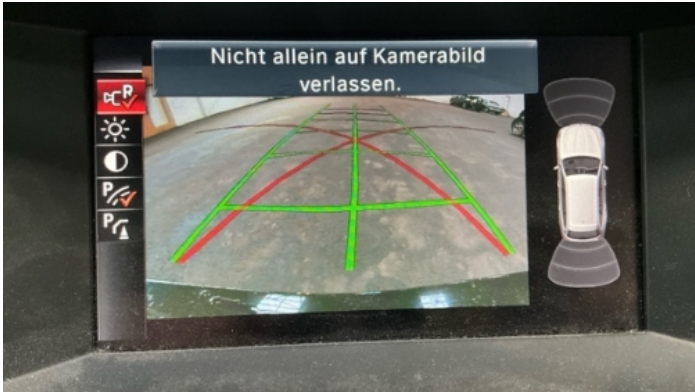
Vehicle Condition	Runner	VAT Type	Qualifying
Fuel Type	Diesel	Road Worthy	Yes
Colour	Black	Engine Size (cc)	2993
Engine Size	3.0	No of Doors	5
Body Type	Stationwagon / Estate	Drive Train	Rear
Seat Colour		No of Seats	5
Seat Covering Name	DIAGONAL ANTHRAXIT	Seat Covering	Cloth
Charging Cables		NEDC CO2 Rating (q/km)	139
Gearbox Type	Automatic		

## Vehicle History & Documents

Service Book Available	-	Next Service Mileage	km
Previous Usage		Imported	No
Manufacturer Warranty			











## Equipment

Trip Computer	Airbag Status	Anti-lock braking	Bluetooth telephone interface
Diesel particulate filter	Remote adjusting wing mirrors	Reversing Camera	Stability control
CD Player	Electrictailgate	Leather steering wheel	Rear parking sensors
USB Socket	Alloys wheels	Auxiliary Socket	Cruise control
Front parking sensors	Remote central locking	Split folding rear seats	Xenon headlamps
Electrically folding wing mirrors	Laneassist	Radio	

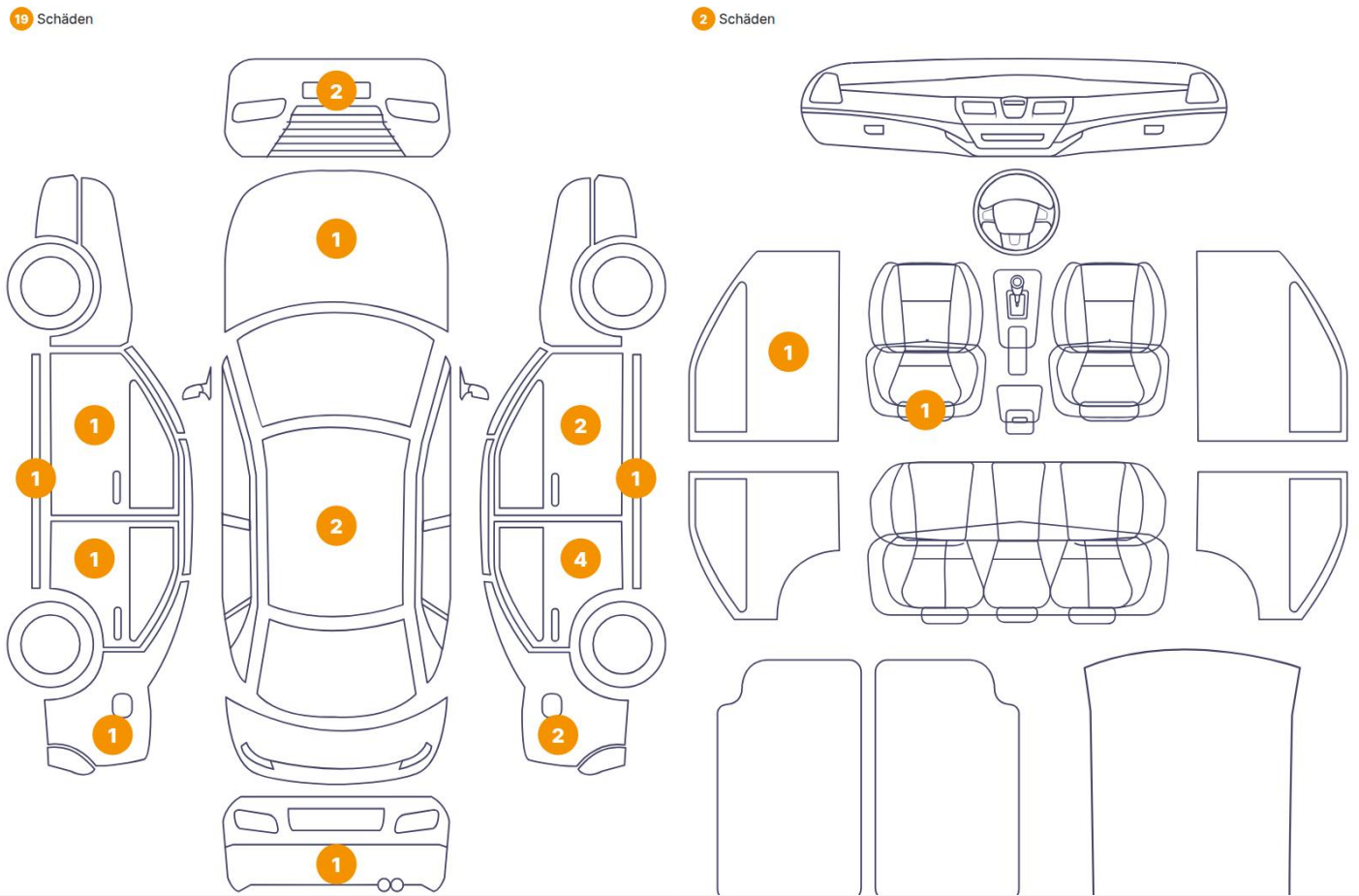
## Equipment Details

Air Conditioning	Dual Zone Climate Control	Alloy Wheel Size	17
Seat Heating	Front		

## Wheels & Tyres

Right Front Tyre Depth	6	Left Front Tyre Depth	6
Right Rear Tyre Depth	6	Left Rear Tyre Depth	6

Cosmetic Damage



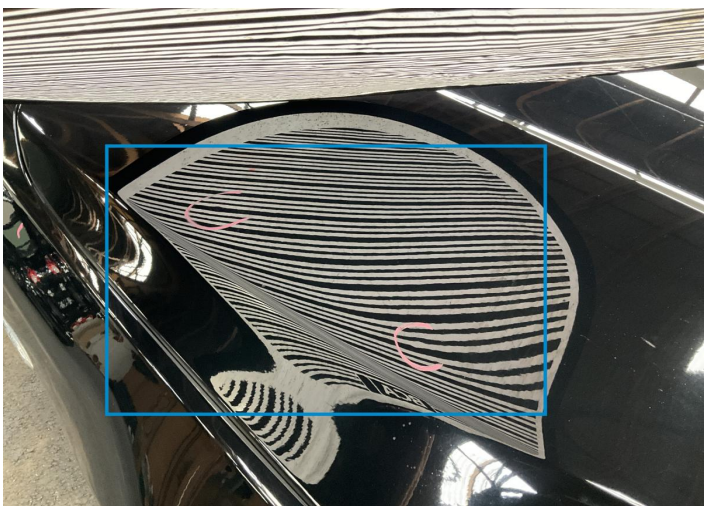
Component		Damage	Comments
1	Bumper / Front	Paint / Scratch / Scuff	
2	Hood	Bodywork / Dent / Dent	
3	Bumper / Front	Paint / Scratch / Scuff	
4	Rocker Panel / Center Left	Paint / Scratch / Scuff	
5	Door / Front Left	Paint / Scratch / Scuff	
6	Door / Back Left	Paint / Scratch / Scuff	
7	Roof	Paint / Scratch / Scuff	
8	Roof	Bodywork / Dent / Dent	
9	Side Panel / Back Left	Paint / Scratch / Scuff	
10	Bumper / Back	Bodywork / Breakage / Hole	
11	Side Panel / Back Right	Paint / Poor Previous Repair	
12	Door / Back Right	Paint / Scratch / Scuff	
13	Side Panel / Back Right	Paint / Scratch / Scuff	

14	Door / Back Right	Bodywork / Dent / Dent
15	Door / Back Right	Paint / Scratch / Scuff
16	Door / Front Right	Paint / Scratch / Scuff
17	Door / Front Right	Paint / Scratch / Scuff
18	Rocker Panel / Center Right	Paint / Scratch / Scuff
19	Door / Back Right	Paint / Scratch / Scuff
20	Seat / Front Left	Interior / Broken
21	Panel Filling / Front Left	Interior / Scratched





1. Bumper / Front  
Paint / Scratch / Scuff -



2. Hood  
Bodywork / Dent / Dent -



3. Bumper / Front  
Paint / Scratch / Scuff -



4. Rocker Panel / Center Left  
Paint / Scratch / Scuff -



5. Door / Front Left  
Paint / Scratch / Scuff -

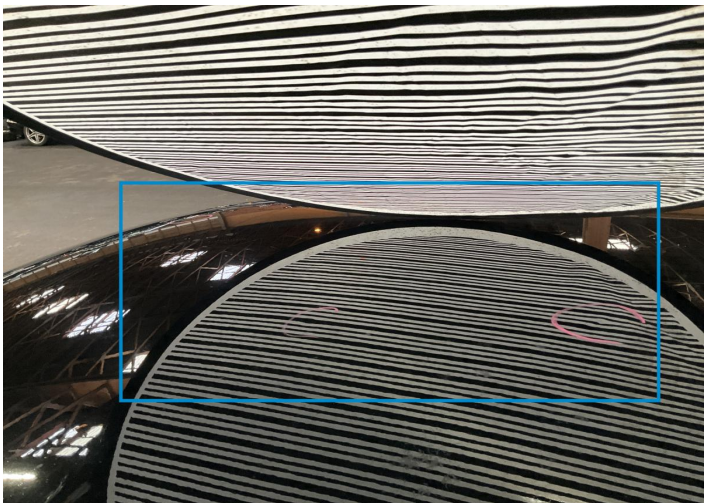


6. Door / Back Left  
Paint / Scratch / Scuff -





7. Roof  
Paint / Scratch / Scuff -



8. Roof  
Bodywork / Dent / Dent -



9. Side Panel / Back Left  
Paint / Scratch / Scuff -



10. Bumper / Back  
Bodywork / Breakage / Hole -



11. Side Panel / Back Right  
Paint / Poor Previous Repair -



12. Door / Back Right  
Paint / Scratch / Scuff -





13. Side Panel / Back Right  
Paint / Scratch / Scuff -



14. Door / Back Right  
Bodywork / Dent / Dent -



15. Door / Back Right  
Paint / Scratch / Scuff -



16. Door / Front Right  
Paint / Scratch / Scuff -



17. Door / Front Right  
Paint / Scratch / Scuff -



18. Rocker Panel / Center Right  
Paint / Scratch / Scuff -





19. Door / Back Right  
Paint / Scratch / Scuff -



20. Seat / Front Left  
Interior / Broken -



21. Panel Filling / Front Left  
Interior / Scratched -

## Mechanical Condition

### Control Lights

Display Defect	✓	Service Light	✓
ABS Warning Light	✓	ESP Fault/Traction Control Malfunction Light	✓
Diesel Particulate Filter Light	✓	Airbag Warning Light	✓
Oil Pressure Warning Light	✓	Brake Warning Light	✓
Power Steering Warning Light	✓	Alternator / Battery	✓
No Dashboard Lights	✓	Tire Pressure Monitoring System	✓

### Equipments Test

Main & Spare Keys Functioning	✓	Electric Windows	✓
Audio Equipment	✓	Parking Sensors / Cameras Functioning	✓
AC / Heating System	✓		

### Engine

Engine Status / EML	✓	Engine Leak Visible	✓
Engine Starts	✓		

### Gearbox

Gear Box	✓
----------	---

### Levels

Brakes Fluid	✓	Coolant Fluid	✓
--------------	---	---------------	---



Test Drive Inspection

Steering Wheel			
Steering   Noise / Anomaly		✓	
Engine			
Engine Noise	✓	The Gears Scratch / Skip / Abnormal Operation	✓
Fume Quantity	✓	Power Loss	✓
Brake			
Brake System Anomaly		✓	
General			
Test Driven Status		✓	
✓ <i>No troubles detected, good condition or correct tests, according to vehicle age and mileage</i>			
! <i>Damages or malfunction detected that requires repairs by the buyer</i>			
NA <i>Not applicable</i>			
= <i>Not tested</i>			

Disclaimer

Please also note the "UserGuide condition report", which shows the scope of the vehicle description.

[User Guide](#)