



## BMW 5er 525d Touring Aut.

VIN NO WBA5J71040GZ77270  
Registration Number 040GZ77270



### MOT Date

2027-01-01

### Last Service

2025-01-24

### Number of Owners

2

### Last Service Mileage

112581

### Number of Keys

2

### First Registration Date

2016-04-28

### Odometer Reading

124362 km

### Country First Registered

Germany

## Inspection Report Summary

Customer	BCA Online	Report Number	P20250923131737
Inspection Date / Place	2025-09-23 / ARS Altmann AG Wolnzach	Cosmetic Grade	4

## Vehicle Summary

Vehicle Condition	Runner	VAT Type	Margin
Fuel Type	Diesel	Road Worthy	Yes
Colour	Blue	Engine Size (cc)	1995
Engine Size	2.0	No of Doors	5
Body Type	Stationwagon / Estate	Drive Train	Rear
Seat Colour		No of Seats	5
Seat Covering Name		Seat Covering	Leather
Charging Cables		NEDC CO2 Rating (q/km)	129
Gearbox Type	Automatic		

## Vehicle History & Documents

Service Book Available	Present	Next Service Mileage	km
Previous Usage		Imported	No
Manufacturer Warranty			











Equipment

Airbag Status	Anti-lock braking	Diesel particulate filter	Remote adjusting wing mirrors
Roof rails	Stability control	CD Player	Electrictailgate
Radio	Alloys wheels	Bi Xenon Headlamps	Front parking sensors
Remote central locking	Satellite navigation	Sunroof	Central locking
Leather steering wheel	Rear parking sensors		

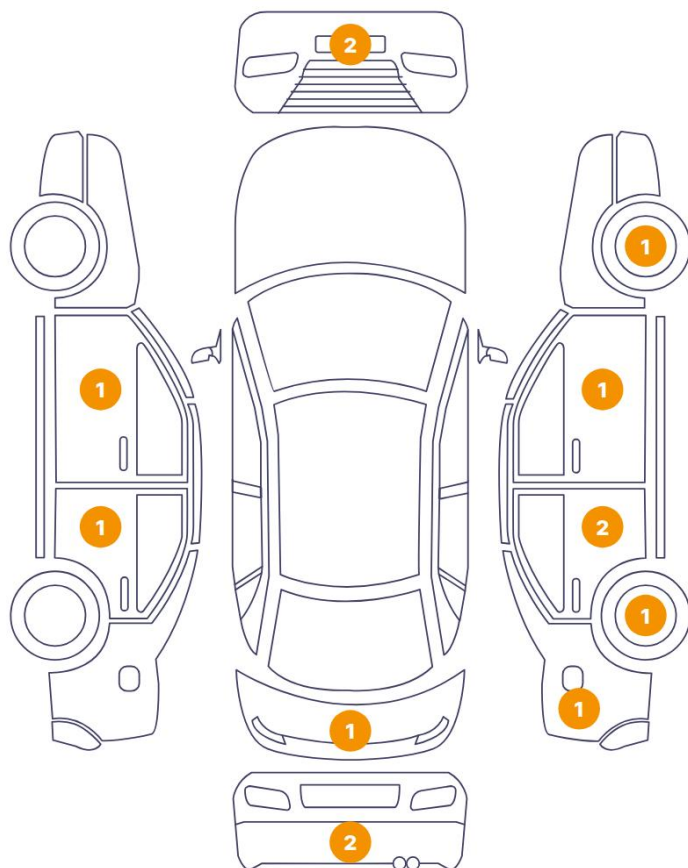
Equipment Details

Air Conditioning	Dual Zone Climate Control	Alloy Wheel Size	19
Seat Heating	Front	Sunroof Type	Opening Panoramic

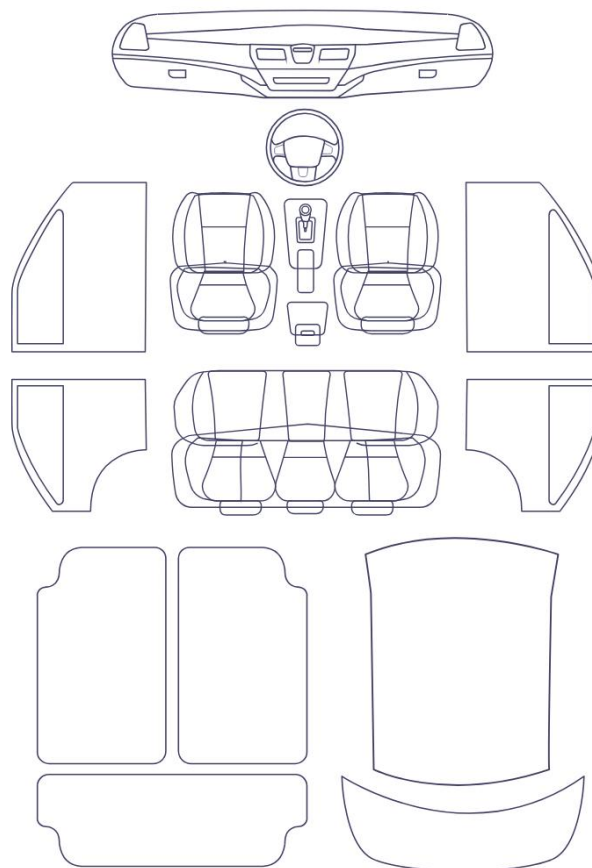
Wheels & Tyres

Right Front Tyre Depth	5	Left Front Tyre Depth	5
Right Rear Tyre Depth	4	Left Rear Tyre Depth	4

### 13 Schäden



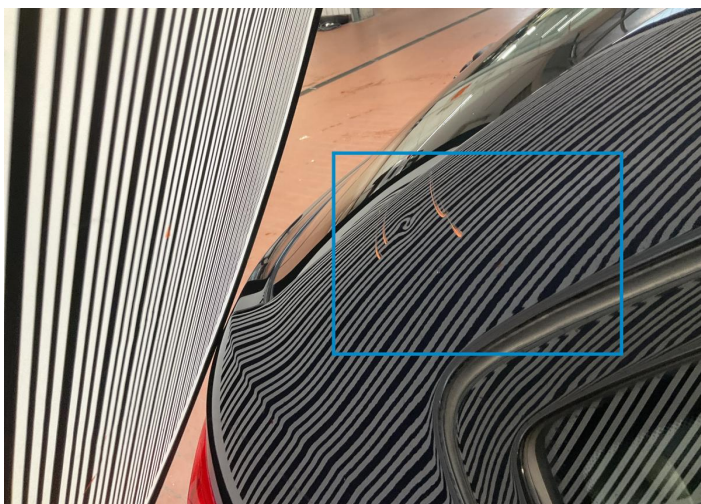
## Schäden

6/12 - Report Number P20250923131737

13 Bumper / Front

Paint / Stone Chip





1. Side Panel / Back Right  
Bodywork / Dent / Dent -



2. Bumper / Front  
Paint / Scratch / Scuff -



3. Door / Front Left  
Paint / Scratch / Scuff -



4. Door / Back Left  
Paint / Scratch / Scuff -



5. Bumper / Back  
Paint / Scratch / Scuff -



6. Bumper / Back  
Paint / Scratch / Scuff -

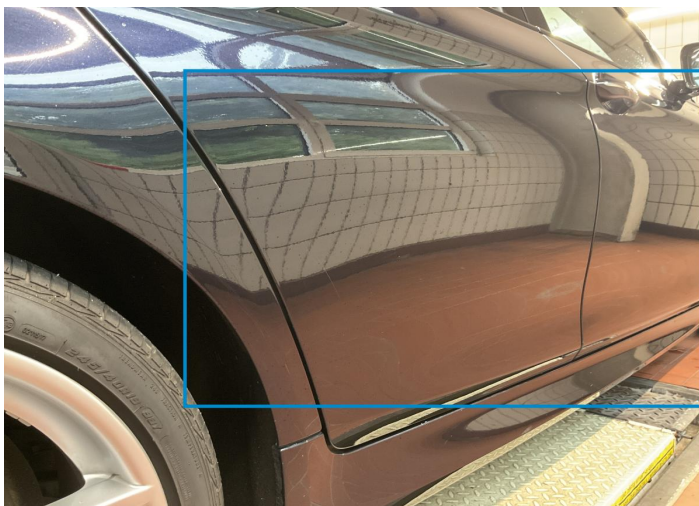




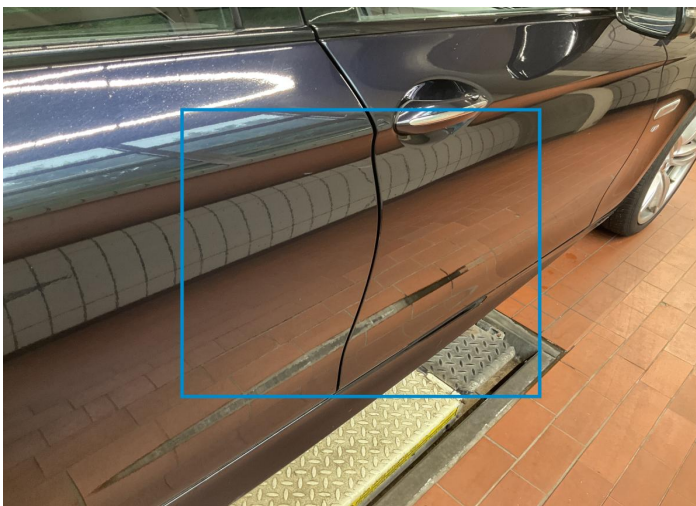
7. Tailgate  
Paint / Scratch / Scuff -



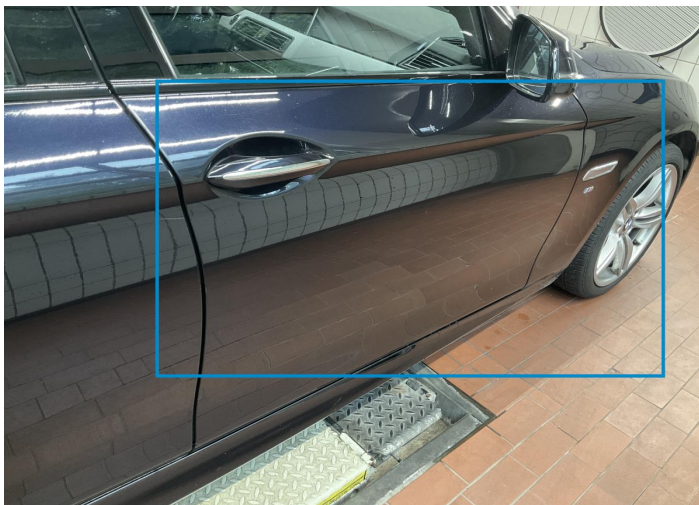
8. Rim / Back Right  
Out of Bodywork / Scratch -



9. Door / Back Right  
Paint / Scratch / Scuff -



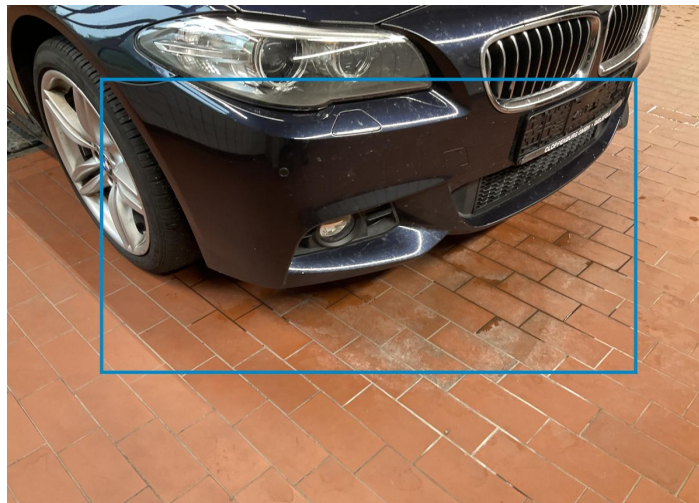
10. Door / Back Right  
Paint / Scratch / Scuff -



11. Door / Front Right  
Paint / Scratch / Scuff -



12. Rim / Front Right  
Out of Bodywork / Scratch -



13. Bumper / Front  
Paint / Stone Chip -



## Mechanical Condition

### Equipments Test

Central Locking	✓	Audio Equipment	✓
AC / Heating System	✓	Main & Spare Keys Functioning	✓
Electric Windows	✓	Navigation System	✓
Parking Sensors / Cameras Functioning	✓		

### Control Lights

ABS Warning Light	✓	ESP Fault/Traction Control Malfunction Light	✓
Diesel Particulate Filter Light	✓	Airbag Warning Light	✓
Oil Pressure Warning Light	✓	Brake Warning Light	✓
Power Steering Warning Light	✓	Alternator / Battery	✓
No Dashboard Lights	✓	Display Defect	✓
Service Light	✓	Tire Pressure Monitoring System	✓

### Engine

Engine Status / EML	✓	Engine Leak Visible	✓
Engine Starts	✓		

### Gearbox

Gear Box	✓
----------	---

### Levels

Brakes Fluid	NA	Coolant Fluid	NA
--------------	----	---------------	----

Test Drive Inspection

Steering Wheel			
Steering   Noise / Anomaly		✓	
Engine			
Engine Noise	✓	The Gears Scratch / Skip / Abnormal Operation	✓
Fume Quantity	✓	Power Loss	✓
Brake			
Brake System Anomaly		✓	
General			
Test Driven Status		✓	
✓ No troubles detected, good condition or correct tests, according to vehicle age and mileage			
! Damages or malfunction detected that requires repairs by the buyer			
NA Not applicable			
☐ Not tested			

Disclaimer

Please also note the "UserGuide condition report", which shows the scope of the vehicle description.

[User Guide](#)