



BMW 5er 520d xDrive Touring Aut.

VIN NO WBA51BN070CK90255

Registration Number 070CK90255



MOT Date

2025-07-01

Last Service

2025-06-25

Number of Owners

1

Last Service Mileage

142550

Number of Keys

2

First Registration Date

2022-07-01

Odometer Reading

146304 km

Country First Registered

Germany

Inspection Report Summary

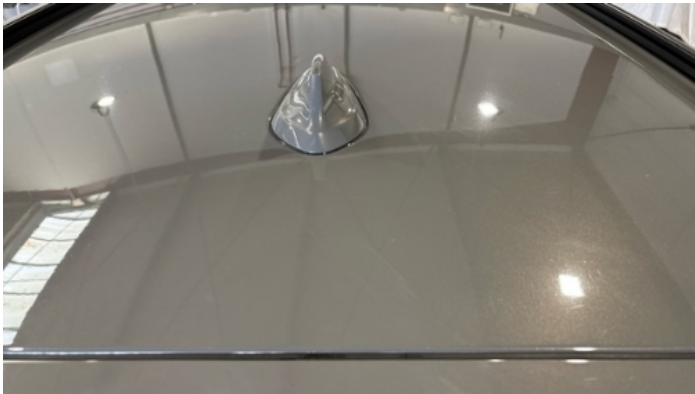
Customer	BCA Online	Report Number	P20250828141811
Inspection Date / Place	2025-08-28 / BCA Oberndorf	Cosmetic Grade	4

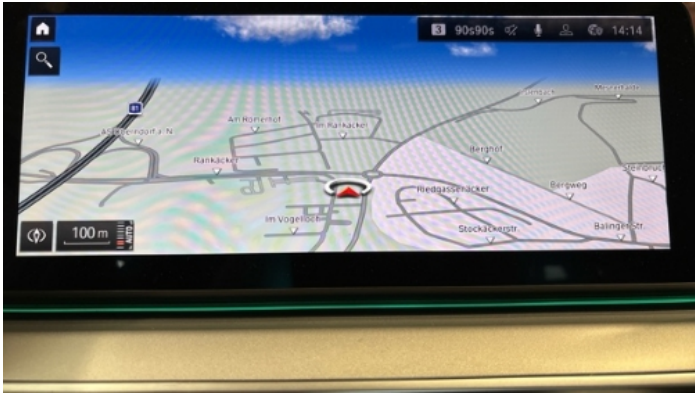
Vehicle Summary

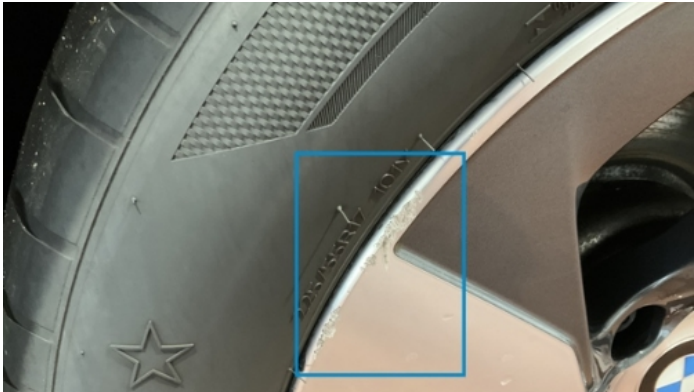
Vehicle Condition	Runner	VAT Type	Qualifying
Fuel Type	Diesel	Road Worthy	Yes
Colour	Grey	Engine Size (cc)	1995
Engine Size	2.0	No of Doors	5
Body Type	Stationwagon / Estate	Drive Train	All-Wheel-Drive permanent
Seat Colour		No of Seats	5
Seat Covering Name	Schwarz	Seat Covering	Leather
Charging Cables		WLTP CO2 Emissions	
Gearbox Type	Automatic		

Vehicle History & Documents

Service Book Available	Present	Next Service Mileage	km
Previous Usage		Imported	No
Manufacturer Warrenty			







Equipment

Trafficsignrecognition	Airbag Status	Ambientlighting	Anti-lock braking
Blindspotassist	Cruise control	Digital Radio	Front parking sensors
Parking Assistance	Remote central locking	Roof rails	Split folding rear seats
Central locking	Electrically folding wing mirrors	Emergencybrakeassist	Laneassist
Radio	USB Socket	Alloys wheels	AndroidAuto
AppleCarPlay	Bluetooth telephone interface	Diesel particulate filter	Digitaldashboard
Head up Display	Remote adjusting wing mirrors	Reversing Camera	Satellite navigation
Stability control	Distancewarningsystem	Electrictailgate	Keyless Entry
Leather steering wheel	Rear parking sensors		

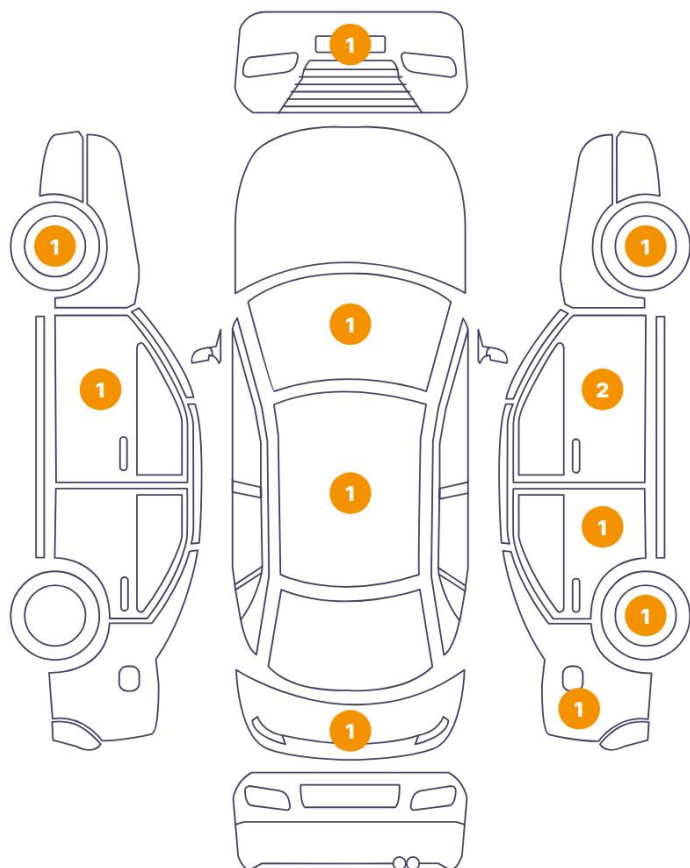
Equipment Details

Air Conditioning	Four Zone Climate Control	Alloy Wheel Size	17
Extra Wheel / Tyre Set	Winter Tyres - Alloy	Seat Heating	Front

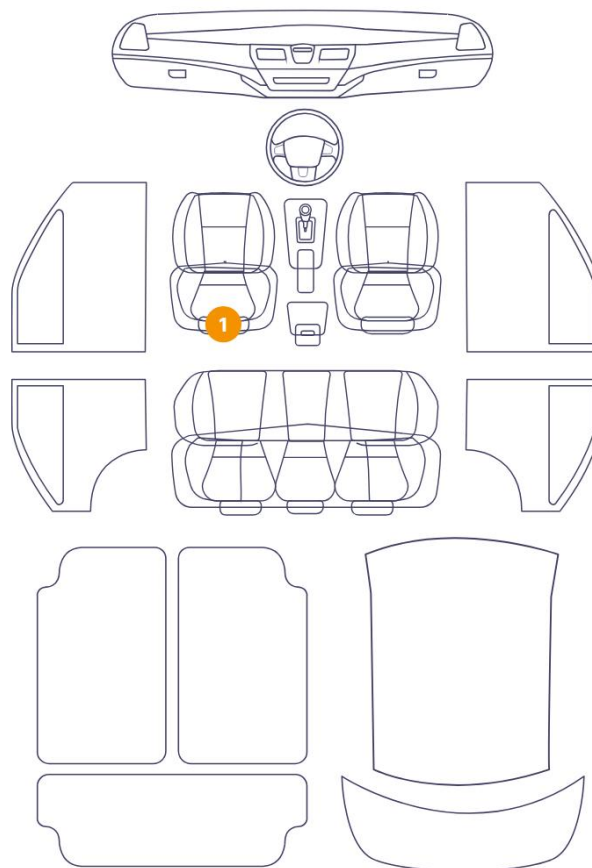
Wheels & Tyres

Extra Wheel - 1 Tyre Depth	6	Extra Wheel - 2 Tyre Depth	6
Extra Wheel - 3 Tyre Depth	7	Extra Wheel - 4 Tyre Depth	7
Right Front Tyre Depth	5	Left Front Tyre Depth	5
Right Rear Tyre Depth	5	Left Rear Tyre Depth	5

12 Schäden



2 Schäden



46

1

6/12 - Report Number P20250828141811

13	Door / Front Right	Paint / Scratch / Scuff
----	--------------------	-------------------------

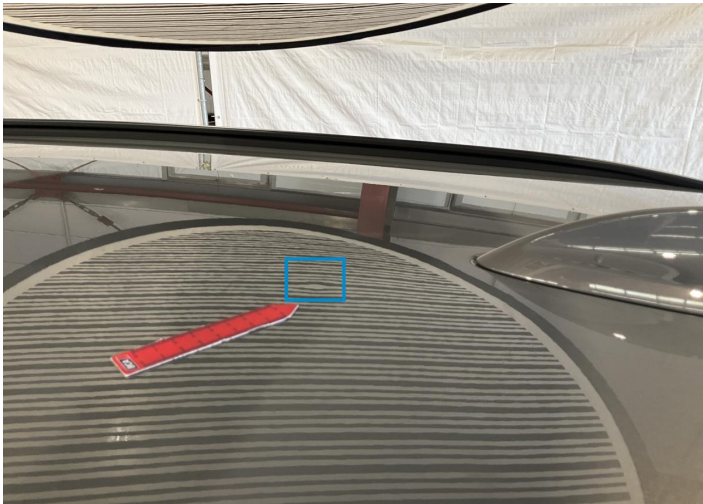
14	Mirror / Front Right	Paint / Scratch / Scuff
----	----------------------	-------------------------



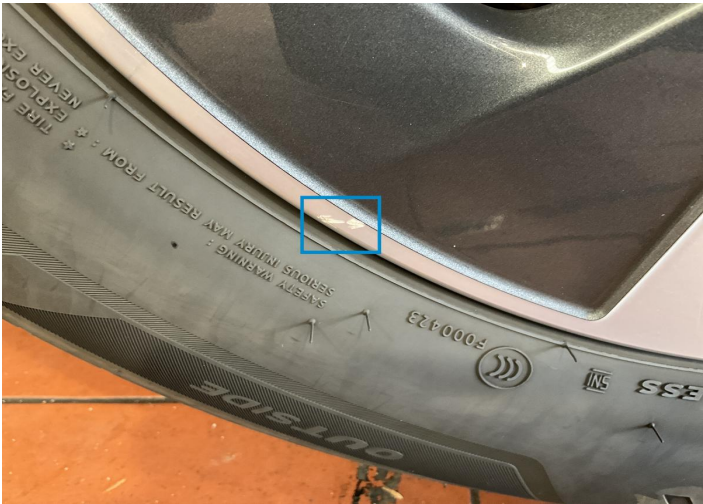
1. Windshield / Front
Glass Break / Impact -



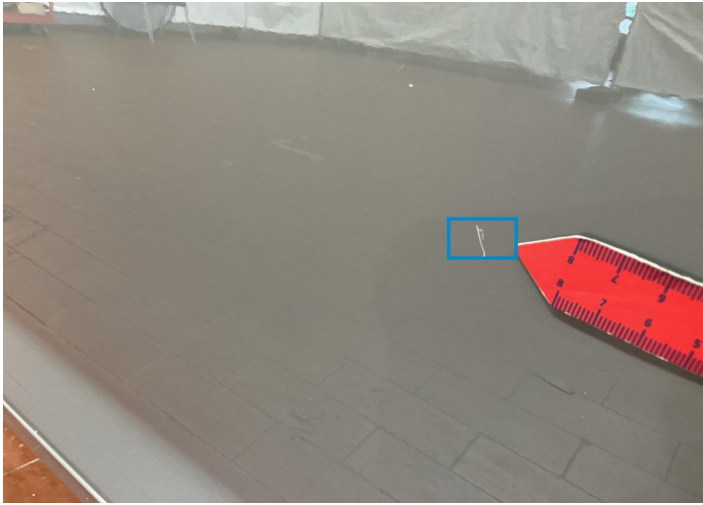
2. Bumper / Front
Paint / Scratch / Scuff -



3. Roof
Bodywork / Dent / Dent -



4. Rim / Front Left
Paint / Stone Chip -



5. Door / Front Left
Paint / Stone Chip -



6. Backrest Cover / Front Left
Interior / Scratched -



7.
Interior / Scratched -



8. Tailgate
Paint / Scratch / Scuff -



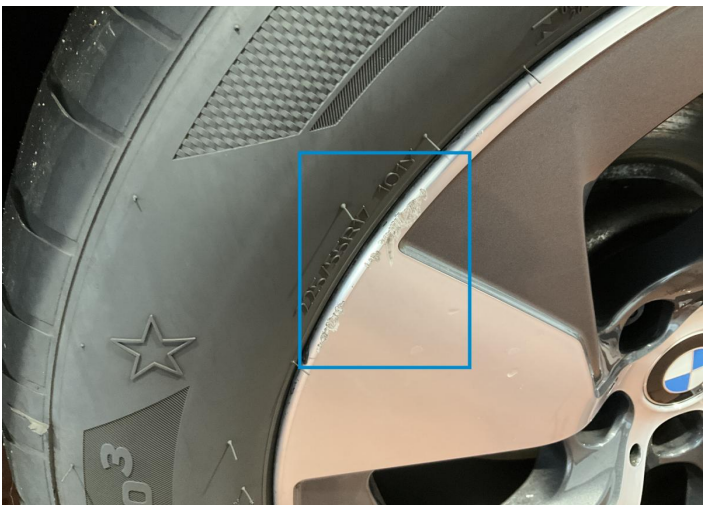
9. Rim / Back Right
Out of Bodywork / Scratch -



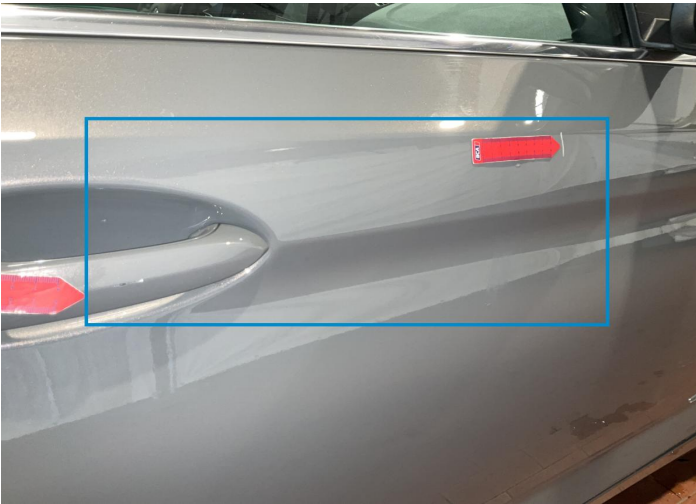
10. Side Panel / Back Right
Bodywork / Dent / Dent -



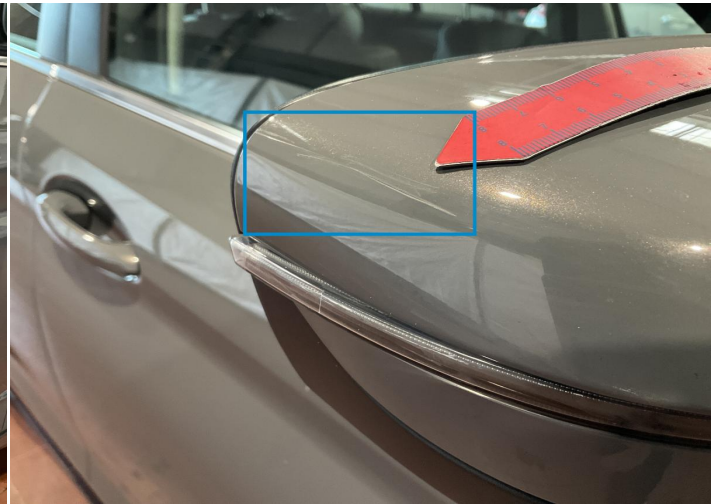
11. Door / Back Right
Paint / Scratch / Scuff -



12. Rim / Front Right
Out of Bodywork / Scratch -



13. Door / Front Right
Paint / Scratch / Scuff -



14. Mirror / Front Right
Paint / Scratch / Scuff -

Mechanical Condition

Control Lights

ABS Warning Light	✓	ESP Fault/Traction Control Malfunction Light	✓
Diesel Particulate Filter Light	✓	Airbag Warning Light	✓
Oil Pressure Warning Light	✓	Brake Warning Light	✓
Power Steering Warning Light	✓	Alternator / Battery	✓
All - wheel Drive	✓	No Dashboard Lights	✓
Display Defect	✓	Service Light	✓
Tire Pressure Monitoring System	✓		

Engine

Engine Status / EML	✓	Engine Leak Visible	✓
Engine Starts	✓		

Gearbox

Gear Box	✓
----------	---

Levels

Brakes Fluid	✓	Coolant Fluid	✓
--------------	---	---------------	---

Equipments Test

Central Locking	✓	Main & Spare Keys Functioning	✓
Electric Windows	✓	Navigation System	✓
Audio Equipment	✓	Parking Sensors / Cameras Functioning	✓
AC / Heating System	✓	Other Equipments	✓

Test Drive Inspection

Engine			
Engine Noise	✓	The Gears Scratch / Skip / Abnormal Operation	✓
Fume Quantity	✓	Power Loss	✓
Brake			
Brake System Anomaly	✓		
Steering Wheel			
Steering Noise / Anomaly	✓		
General			
Test Driven Status	Not Performed		
✓	No troubles detected, good condition or correct tests, according to vehicle age and mileage		
!	Damages or malfunction detected that requires repairs by the buyer		
NA	Not applicable		
☐	Not tested		

Disclaimer

Please also note the "UserGuide condition report", which shows the scope of the vehicle description.

[User Guide](#)