



BMW SERIE 4 GRAN COUPE

Gran Coupé 430d xDrive 258 ch BVA8 M Sport

VIN NO WBA4L11040BH22945
Registration Number ET858KX



MOT Date



Last Service



Number of Owners



Last Service Mileage



Number of Keys



First Registration Date



Odometer Reading



Country First Registered



Inspection Report Summary

Customer	BCA Auto Encheres	Report Number	P20250903134855
Inspection Date / Place	2025-09-03 / BCA BOUCHAIN	Cosmetic Grade	1

Vehicle Summary

Vehicle Condition	Runner	VAT Type	Exempt Rate
Fuel Type	Diesel	Gearbox Type	Automatic
Colour	Grey	Engine Size (cc)	2993
Engine Size	3.0	No of Doors	4
Body Type	Hatchback	Drive Train	All-Wheel-Drive permanent
Seat Colour		No of Seats	5
Charging Cables		NEDC CO2 Rating (q/km)	145

Vehicle History & Documents

Service Book Available	Missing	Next Service Mileage	km
Previous Usage	Normal Use	Imported	No
Manufacturer Warranty			





Equipment

Central locking	Electrically folding wing mirrors	Rear parking sensors	Stability control
Front fog lamps	Power assisted steering	Electrically adjustable seats	Radio
Alloys wheels	Cruise control	Front parking sensors	Satellite navigation

Equipment Details

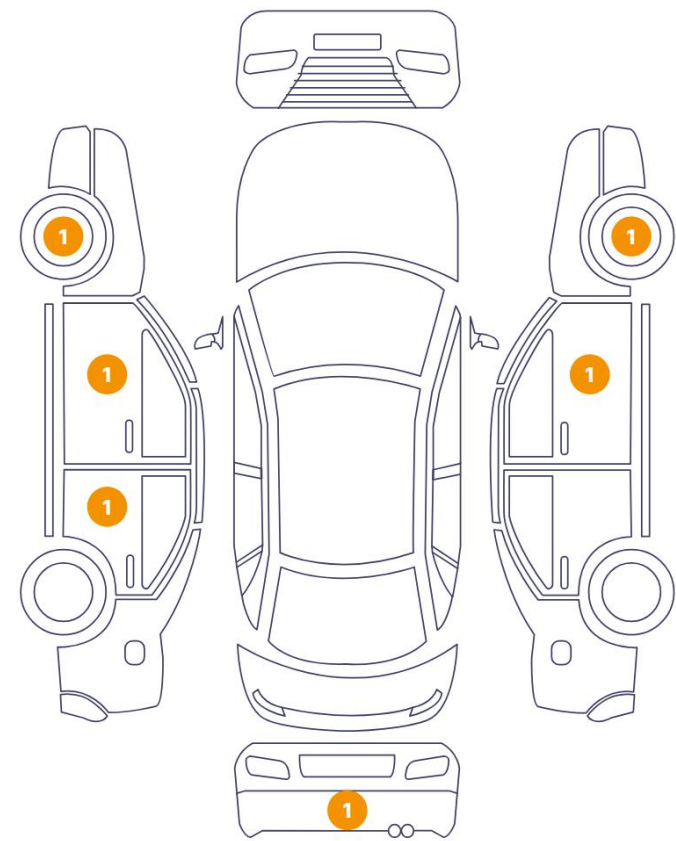
Seat Heating	No	Air Conditioning	Yes
Sunroof Type	Tilt/Slide Steel		

Wheels & Tyres

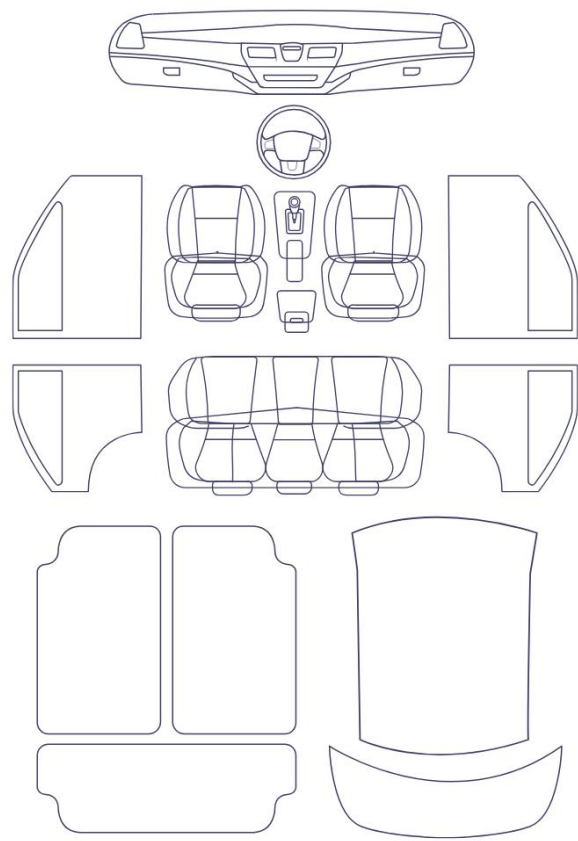
Left Rear Tyre Depth	5	Left Front Tyre Depth	4
Right Rear Tyre Depth	5	Right Front Tyre Depth	4

Cosmetic Damage

6 Dommages



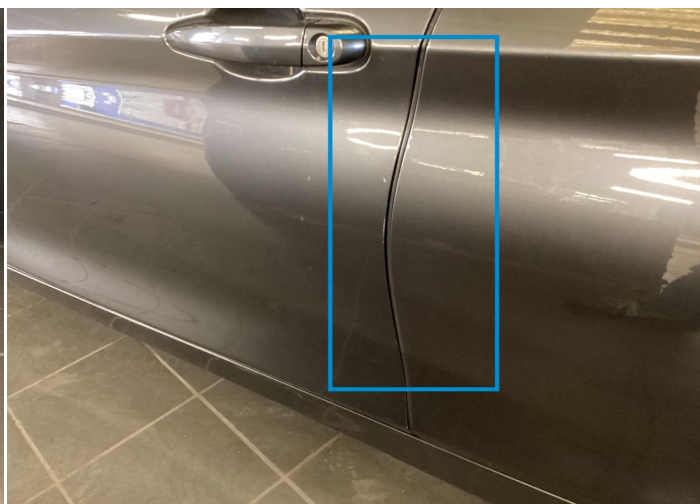
0 Dommages



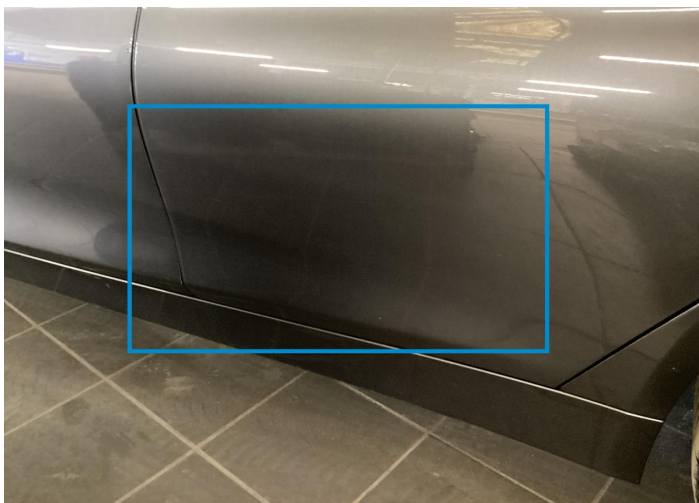
Component		Damage	Comments
1	Rim / Front Left	Out of Bodywork / Scratch	
2	Door / Front Left	Paint / Chipping	
3	Door / Back Left	Paint / Scratch / Line	
4	Corner Bumper / Back Right	Paint / Scratch / Line	
5	Door / Front Right	Paint / Scratch / Line	
6	Rim / Front Right	Out of Bodywork / Scratch	



1. Rim / Front Left
Out of Bodywork / Scratch -



2. Door / Front Left
Paint / Chipping -



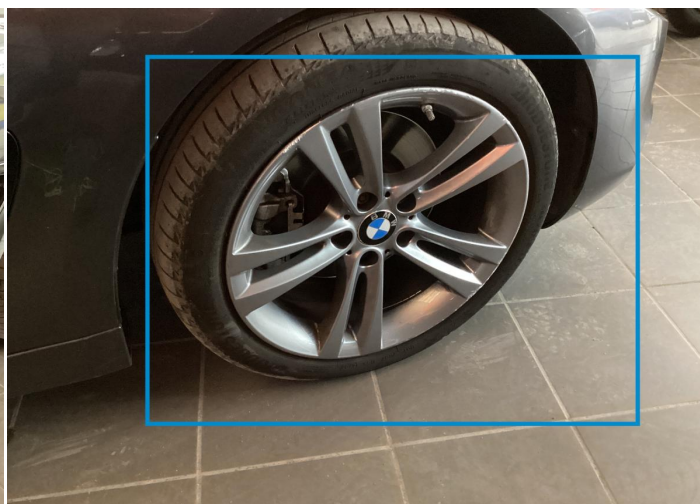
3. Door / Back Left
Paint / Scratch / Line -



4. Corner Bumper / Back Right
Paint / Scratch / Line -



5. Door / Front Right
Paint / Scratch / Line -



6. Rim / Front Right
Out of Bodywork / Scratch -

Mechanical Condition

Levels

Coolant Fluid - Condition	✓	Oil - Condition	✓
Level - Oil	✓	Coolant Fluid	✓
Brakes Fluid	✓		

Tyres

Presence Anti-Theft Lock Nut 

Dashboard Lights

ABS Warning Light	✓	Diesel Particulate Filter Light	✓
ESP Fault/Traction Control Malfunction Light	✓	4WD Light	NA
Dashboard Working	✓	Oil Pressure Warning Light	✓
Engine Light	✓	Airbag Warning Light	✓
Brake Warning Light	✓	Level - Fuel / Battery	25
Transmission Warning Light	✓	Service Light	✓
Steering Fluid Level	NA		

Equipments Test

Electric Windows	✓	Convertible, Sunroof, Wagon, Flatbed truck, Tailgate electrics test	NA
Dump / Trail / Tail Gate Lift	NA	Main & Spare Keys Functioning	✓
Central Locking	✓	Audio Equipment	✓
Navigation System	✓	AC / Heating System	✓
Parking Sensors / Cameras Functioning	✓		

Hybrid/EV

Charge Port Condition	NA	Charge lead 1 condition /Charge lead 2 condition	NA
Hybrid System Fault	NA		

Engine

Cross Member	✓	Serpentine Belt	✓
--------------	---	-----------------	---

Control Liquid Leak ✓

Test Drive Inspection

Test Drive			
Engine functioning	✓	Engine / Aux Belt / Pulley Noise	✓
Vehicle Starts	✓	Steering Noise/Gripping	✓
Engine Power	✓	Smoke Quantity	✓
Transmission	✓	Clutch Functioning	✓
Steering	✓	Brakes Functioning	✓
✓ No troubles detected, good condition or correct tests, according to vehicle age and mileage			
! Damages or malfunction detected that requires repairs by the buyer			
NA Not applicable			
☐ Not tested			

Disclaimer Section

The test drive is done on a flat surface and lasts about 2 minutes. The driven distance is a minimum of 300 meters, including a u-turn, an acceleration and a braking phase. The highest speed achieved during this test is 50km/h. The mechanical check is a visual and dynamic diagnosis without any disassembly. We cannot guarantee any mechanical wear part.