



BMW 4er 420d Gran Coupe Sport-Aut.

VIN NO WBA4E91090G795916
Registration Number 090G795916



MOT Date	Number of Owners	Number of Keys	Odometer Reading
-	4	2	141598 km
Last Service	Last Service Mileage	First Registration Date	Country First Registered
2024-10-07	115567	2017-07-24	-

Inspection Report Summary

Customer	BCA Online	Report Number	P20250929123742
Inspection Date / Place	2025-09-29 / SULOJA Mönchengladbach	Cosmetic Grade	2

Vehicle Summary

Vehicle Condition	Runner	VAT Type	Margin
Fuel Type	Diesel	Road Worthy	Yes
Colour	Grey	Engine Size (cc)	1995
Engine Size	2.0	No of Doors	5
Body Type	Coupe	Drive Train	Rear
Seat Colour		No of Seats	5
Seat Covering Name		Seat Covering	Cloth/Leather
Charging Cables		NEDC CO2 Rating (q/km)	114
Gearbox Type	Automatic		

Vehicle History & Documents

Service Book Available	Present	Next Service Mileage	km
Previous Usage		Imported	No
Manufacturer Warrenty			







Equipment

USB Socket	Alloys wheels	AppleCarPlay	Bi Xenon Headlamps
Cruise control	Front fog lamps	Remote adjusting wing mirrors	Satellite navigation
Sunroof	Central locking	Electrically folding wing mirrors	Leather steering wheel
Rain sensitive windscreen wipers	Airbag Status	Anti-lock braking	Auxiliary Socket
Bluetooth telephone interface	Diesel particulate filter	Front parking sensors	Remote central locking
Stability control	CD Player	Electrically adjustable seats	Electrictailgate
Radio	Rear parking sensors		

Equipment Details

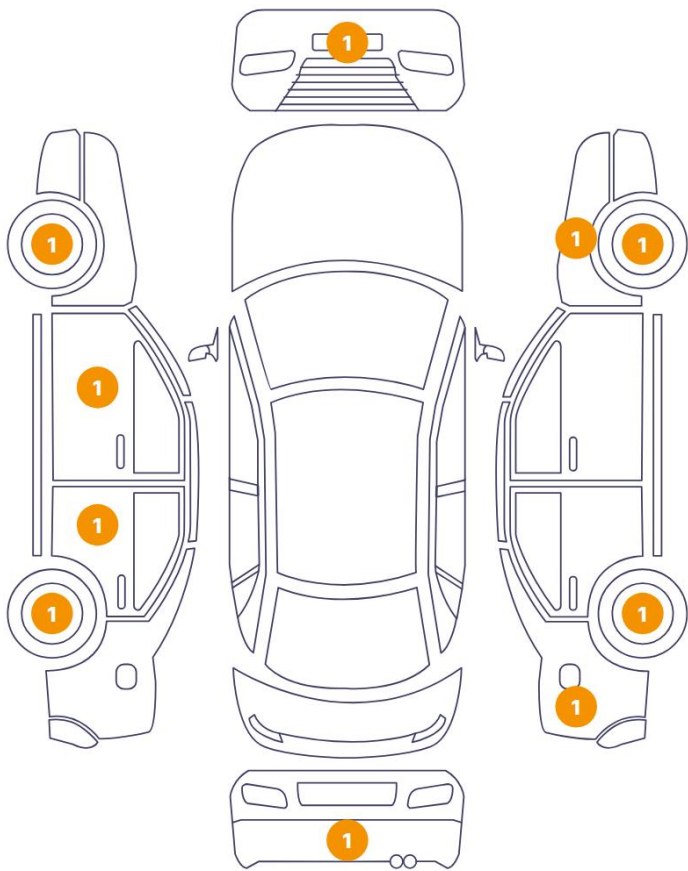
Air Conditioning	Yes	Alloy Wheel Size	18
Seat Heating	Front	Sunroof Type	Tilt/Slide Glass

Wheels & Tyres

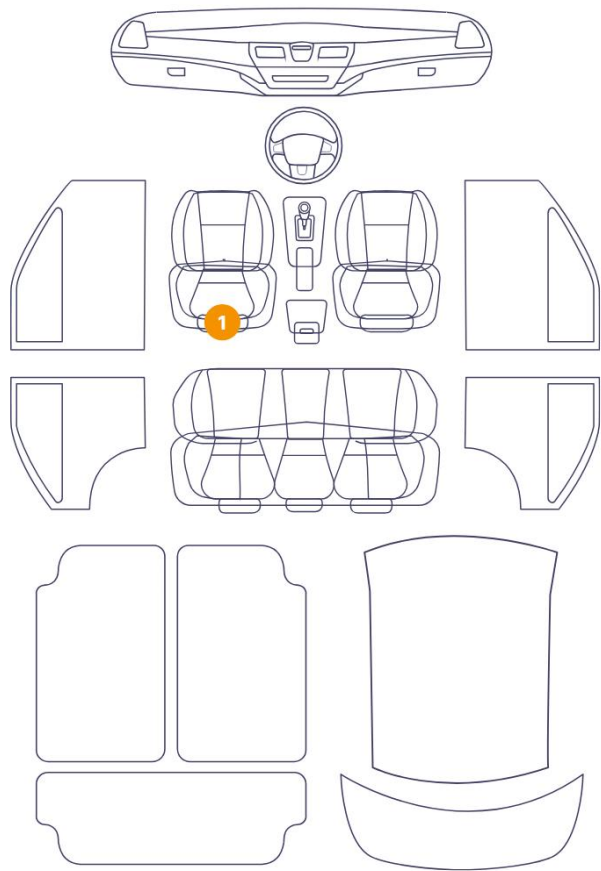
Right Front Tyre Depth	6	Left Front Tyre Depth	6
Right Rear Tyre Depth	5	Left Rear Tyre Depth	5

Cosmetic Damage

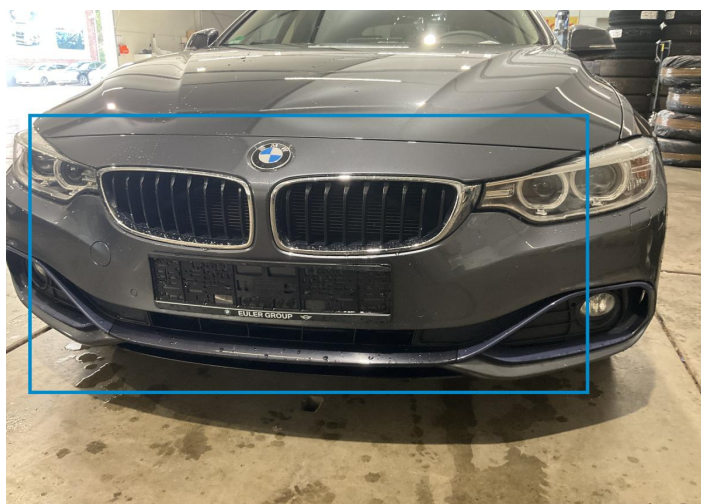
10 Schäden



1 Schäden



Component		Damage	Comments
1	Bumper / Front	Paint / Stone Chip	
2	Rim / Front Left	Out of Bodywork / Scratch	
3	Door / Front Left	Paint / Scratch / Scuff	
4	Door / Back Left	Bodywork / Dent / Dent	
5	Seat / Front Left	Interior / Scratched	
6	Rim / Back Left	Out of Bodywork / Scratch	
7	Corner Bumper / Back Right	Paint / Scratch / Scuff	
8	Side Panel / Back Right	Bodywork / Dent / Dent	
9	Rim / Back Right	Out of Bodywork / Scratch	
10	Fender / Front Right	Bodywork / Dent / Dent	
11	Rim / Front Right	Out of Bodywork / Scratch	



1. Bumper / Front
Paint / Stone Chip -



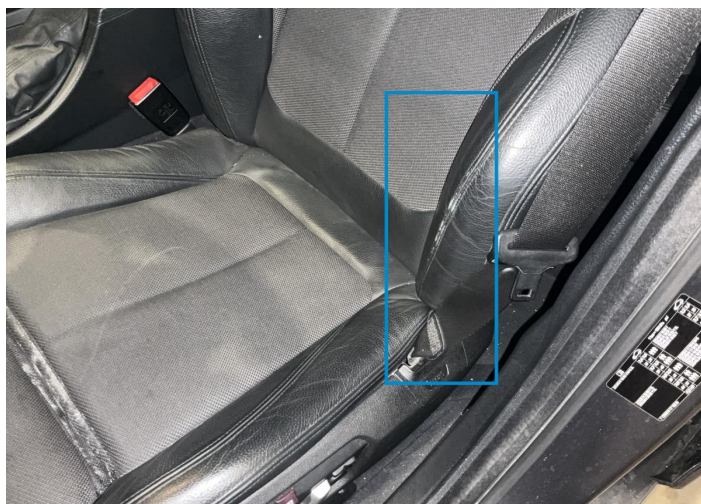
2. Rim / Front Left
Out of Bodywork / Scratch -



3. Door / Front Left
Paint / Scratch / Scuff -



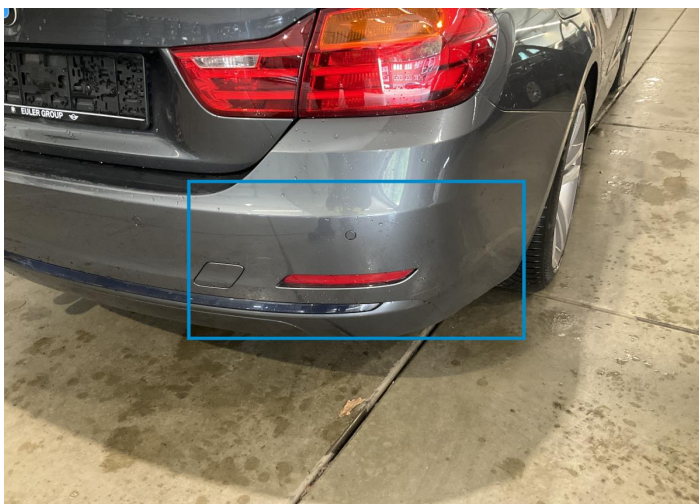
4. Door / Back Left
Bodywork / Dent / Dent -



5. Seat / Front Left
Interior / Scratched -



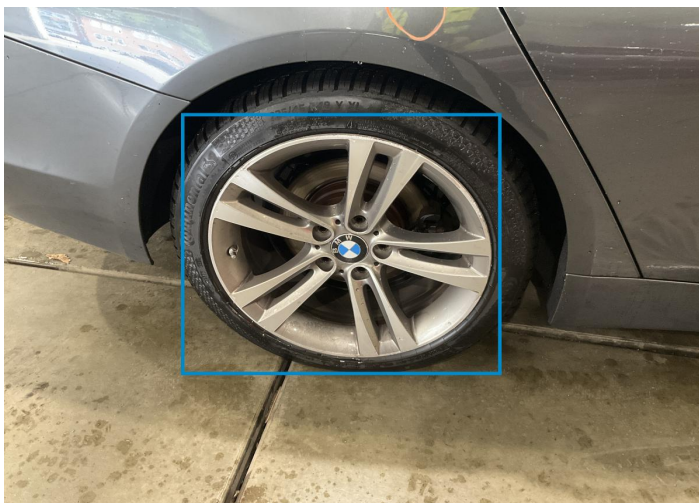
6. Rim / Back Left
Out of Bodywork / Scratch -



7. Corner Bumper / Back Right
Paint / Scratch / Scuff -



8. Side Panel / Back Right
Bodywork / Dent / Dent -



9. Rim / Back Right
Out of Bodywork / Scratch -



10. Fender / Front Right
Bodywork / Dent / Dent -



11. Rim / Front Right
Out of Bodywork / Scratch -

Mechanical Condition

Control Lights

Display Defect	❗	Service Light	✓
ABS Warning Light	✓	ESP Fault/Traction Control Malfunction Light	✓
Diesel Particulate Filter Light	✓	Airbag Warning Light	✓
Oil Pressure Warning Light	✓	Brake Warning Light	✓
Power Steering Warning Light	✓	Alternator / Battery	✓
No Dashboard Lights	✓		

Equipments Test

Central Locking	✓	Main & Spare Keys Functioning	✓
Electric Windows	✓	Navigation System	✓
Audio Equipment	NA	Parking Sensors / Cameras Functioning	✓
AC / Heating System	✓	Other Equipments	✓

Engine

Engine Status / EML	✓	Engine Leak Visible	✓
Engine Starts	✓		

Gearbox

Gear Box	✓
----------	---

Levels

Brakes Fluid	✓	Coolant Fluid	✓
--------------	---	---------------	---

Test Drive Inspection

Steering Wheel			
Steering Noise / Anomaly		✓	
Engine			
Engine Noise	✓	The Gears Scratch / Skip / Abnormal Operation	✓
Fume Quantity	✓	Power Loss	✓
Brake			
Brake System Anomaly		✓	
General			
Test Driven Status		Not Performed	
✓ <i>No troubles detected, good condition or correct tests, according to vehicle age and mileage</i>			
! <i>Damages or malfunction detected that requires repairs by the buyer</i>			
NA <i>Not applicable</i>			
= <i>Not tested</i>			

Disclaimer

Please also note the "UserGuide condition report", which shows the scope of the vehicle description.

[User Guide](#)