



# BMW SERIE 2 GRAN COUPE F74

## Gran Coupe 216 122 ch DKG7 M Sport

VIN NO WBA41GG0307T39255  
Registration Number HD196RR



MOT Date	Number of Owners	Number of Keys	Odometer Reading
-	-	1	6846 km
Last Service	Last Service Mileage	First Registration Date	Country First Registered
-	-	2025-05-23	-

### Inspection Report Summary

Customer	BCAuto Encheres	Report Number	P20250924141543
Inspection Date / Place	2025-09-24 / BCA GARONS	Cosmetic Grade	4

### Vehicle Summary

Vehicle Condition	Not Movable	VAT Type	Qualified - Normal Rate
Fuel Type	Petrol	Gearbox Type	Auto clutch
Colour	Black	Engine Size (cc)	1499
Engine Size	1.5	No of Doors	4
Body Type	Flatbed Truck	Drive Train	Front
Seat Colour		No of Seats	5
Charging Cables		WLTP CO2 Emissions	

### Vehicle History & Documents

Service Book Available	-	Next Service Mileage	km
Previous Usage	Normal Use	Imported	
Manufacturer Warrenty			







Equipment

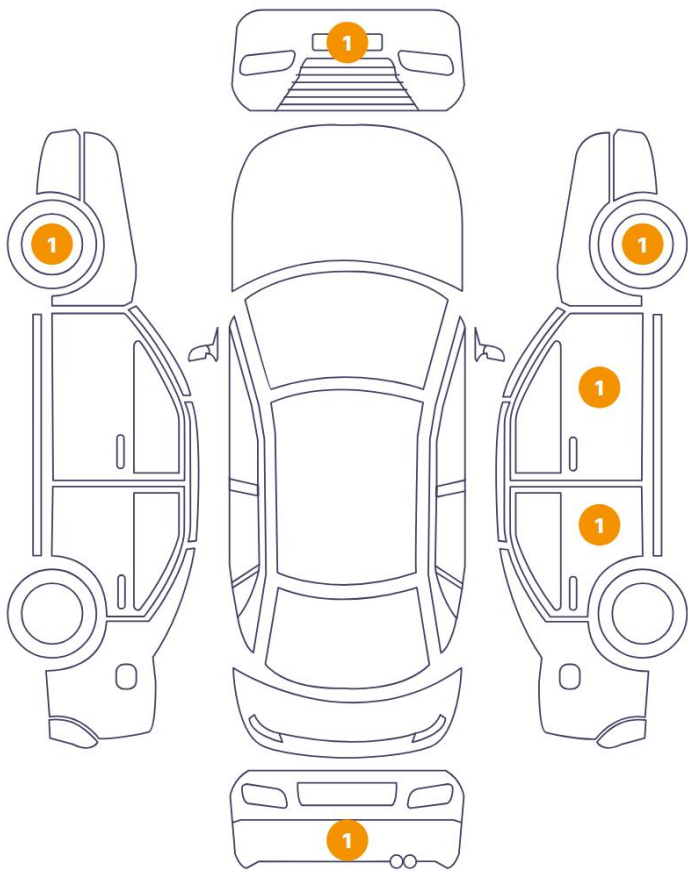
Central locking	Radio	Alloys wheels	Front parking sensors
Satellite navigation	Electrically folding wing mirrors	Rear parking sensors	Cruise control
Power assisted steering			

Equipment Details

Seat Heating	Front	Air Conditioning	Yes
--------------	-------	------------------	-----

Cosmetic Damage

6 Dommages



0 Dommages



Component		Damage	Comments
1	Rim	Out of Bodywork / Scratch	
2	Shield / Back	Paint / Scratch / Line	
3	Door / Back Right	Paint / Chipping	
4	Mirror / Front Right	Paint / Scratch / Line	
5	Rim	Out of Bodywork / Scratch	
6	Shield / Front	Bodywork / Breakage	

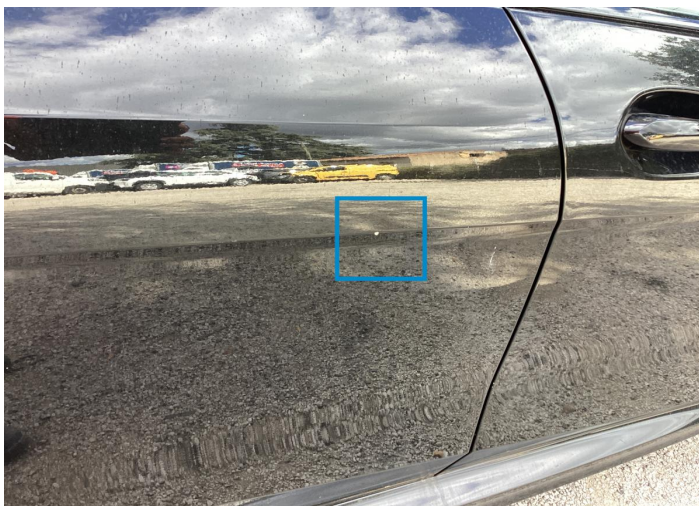




1. Rim  
Out of Bodywork / Scratch -



2. Shield / Back  
Paint / Scratch / Line -



3. Door / Back Right  
Paint / Chipping -



4. Mirror / Front Right  
Paint / Scratch / Line -



5. Rim  
Out of Bodywork / Scratch -




6. Shield / Front  
Bodywork / Breakage -



Mechanical Condition


Tyres

Presence Anti-Theft Lock Nut 

 *No troubles detected, good condition or correct tests, according to vehicle age and mileage*

 *Damages or malfunction detected that requires repairs by the buyer*

 *Not applicable*

 *Not tested*

Disclaimer Section

*The test drive is done on a flat surface and lasts about 2 minutes. The driven distance is a minimum of 300 meters, including a u-turn, an acceleration and a braking phase. The highest speed achieved during this test is 50km/h. The mechanical check is a visual and dynamic diagnosis without any disassembly. We cannot guarantee any mechanical wear part.*